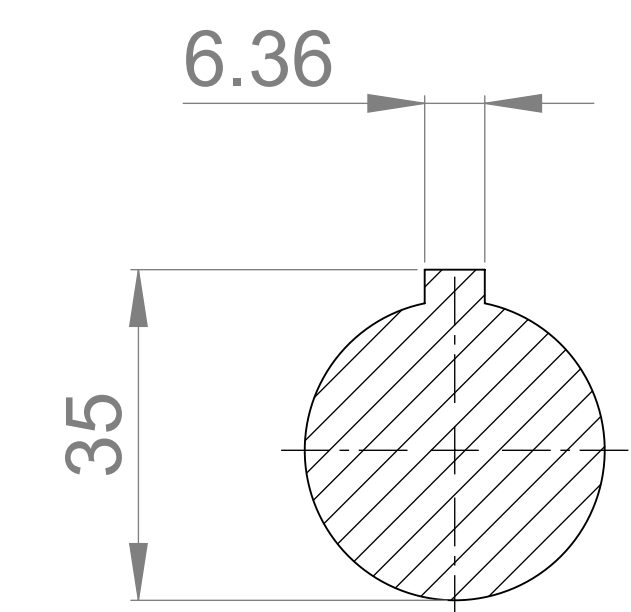
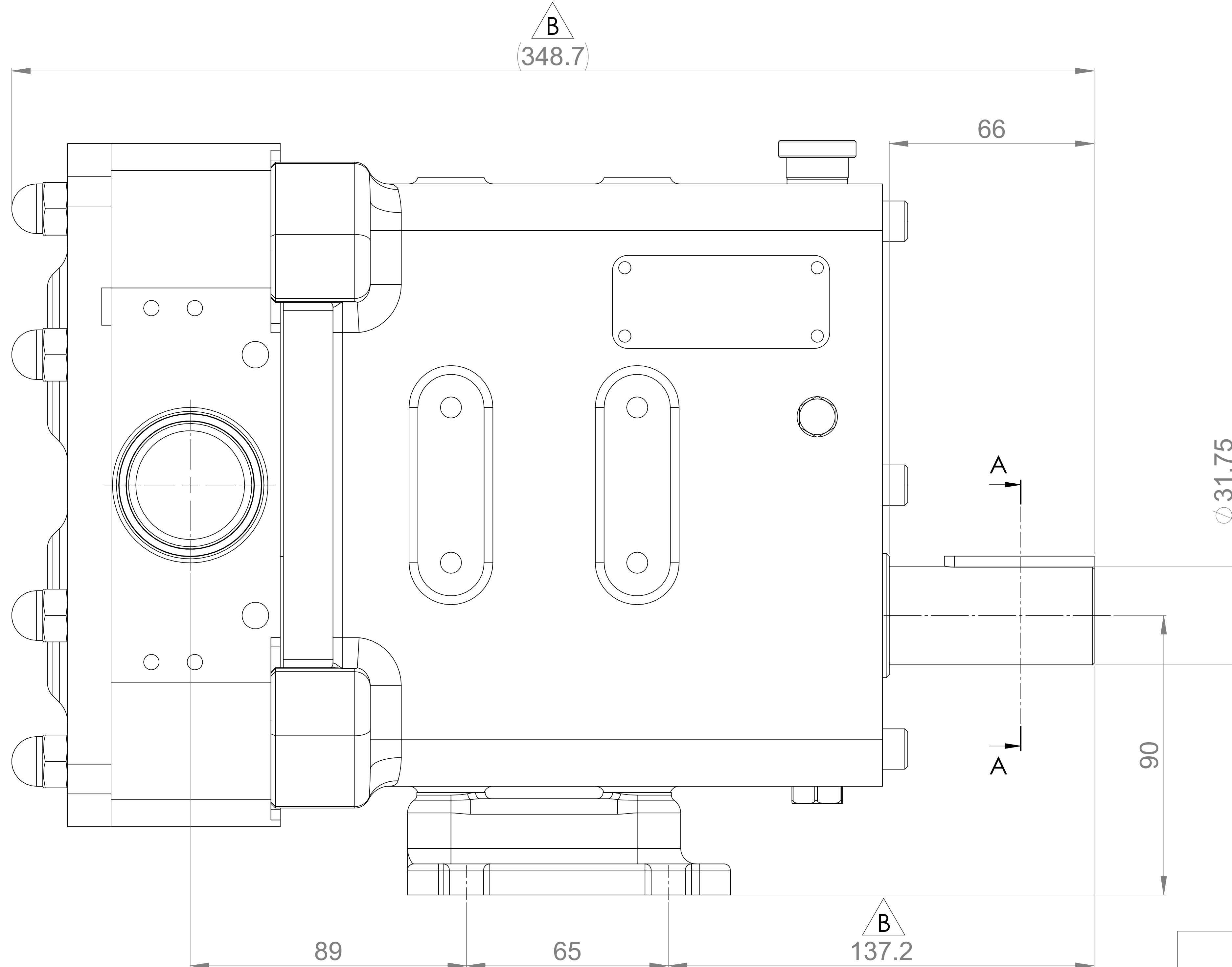
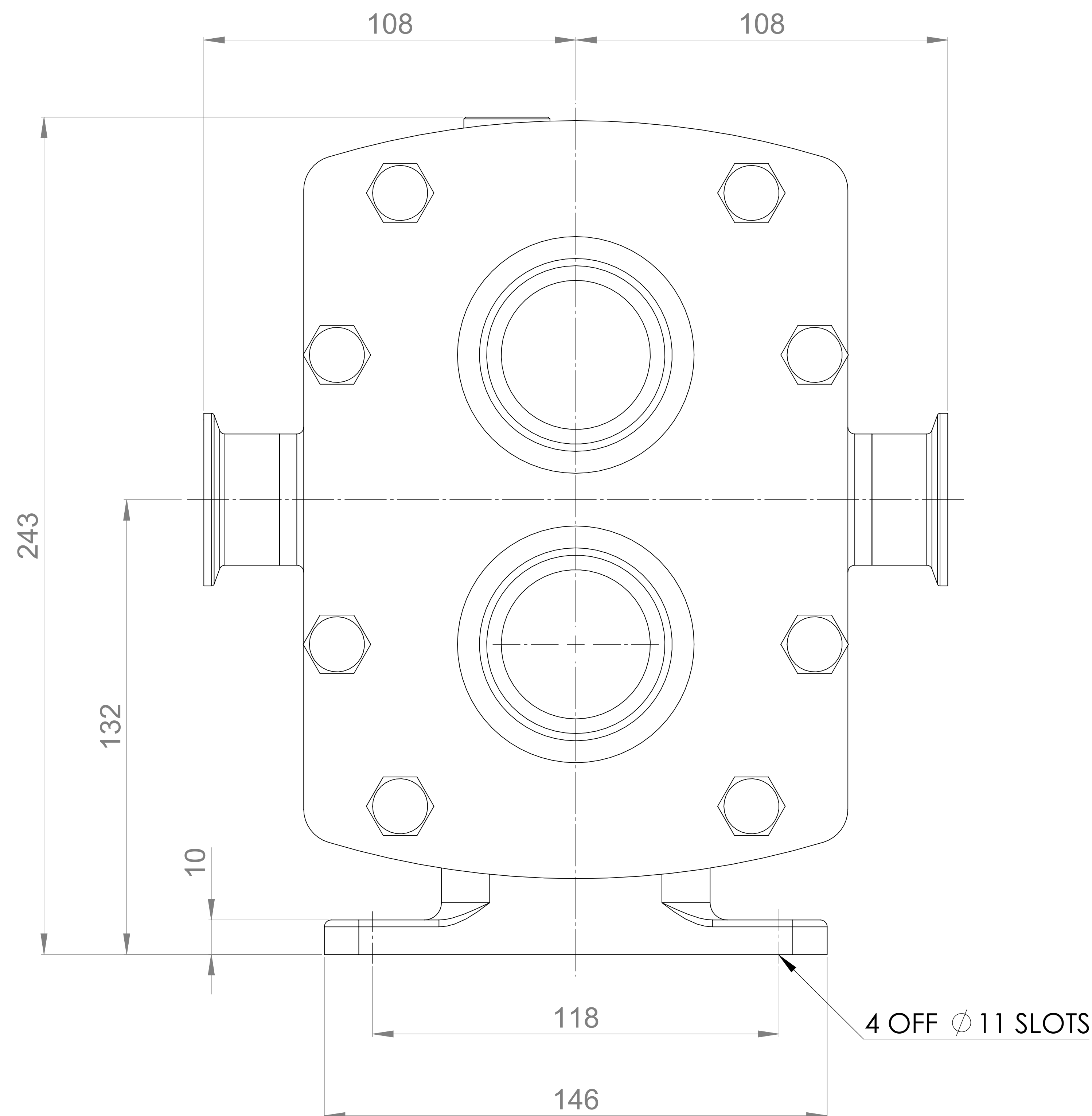
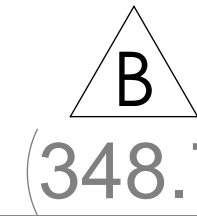
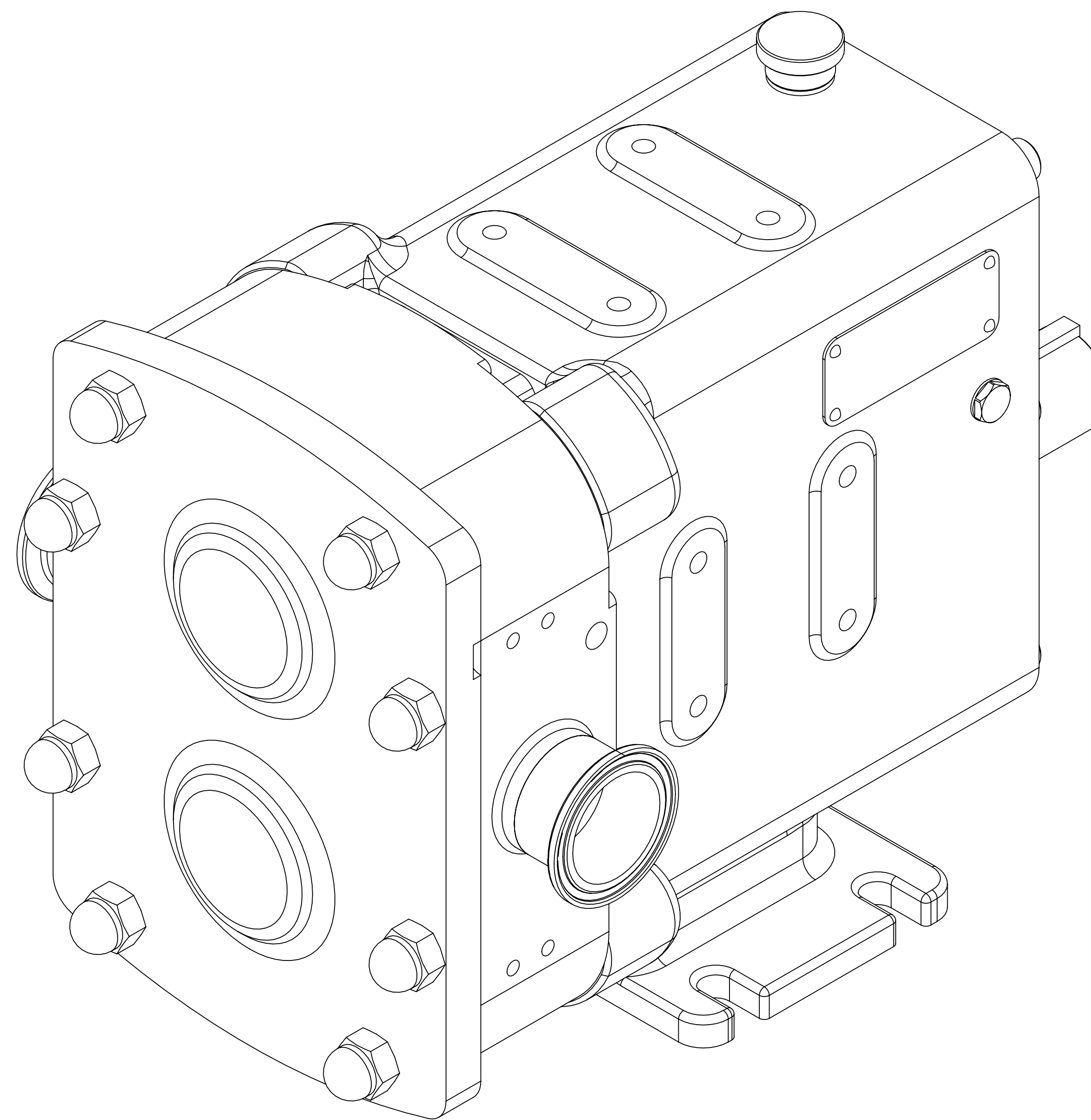
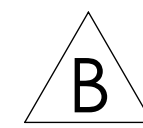


GENERAL ARRANGEMENT DETAILS

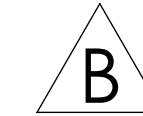
PUMP INFORMATION

| | |
|-------------------------|----------------------------------|
| PUMP MODEL | REVOLUTION - TWIN WING R0200X/21 |
| LEFT/TOP CONNECTION | 1.5" TRI-CLAMP |
| RIGHT/BOTTOM CONNECTION | 1.5" TRI-CLAMP |
| DRIVE SHAFT POSITION | BOTTOM SHAFT DRIVE |
| FRONT COVER ADDITIONS | STANDARD |
| ROTORCASE ADDITIONS | STANDARD |
| GEARBOX ADDITIONS | STANDARD |
| PUMP ADDITIONS | STANDARD |



THIS IS NOT A CERTIFIED DRAWING, USE FOR GENERAL
INSTALLATION ONLY



SECTION A-A



| | | |
|------------------------------|-------|------------|
| UPDATED FORMAT AND PRECISION | B | 24/09/2024 |
| ISSUED | A | 07/02/2020 |
| AMENDMENT | ISSUE | DATE |

| | | | | | | |
|---|--|---|---|-------|---------|--------------------------------------|
|  <p>HIGHFIELD INDUSTRIAL ESTATE, EASTBOURNE EAST SUSSEX, BN23 6PT TEL: (+44) 1323 509211</p> | <p>COPYRIGHT:</p> <p>THIS DRAWING IS THE SOLE PROPERTY OF VIKING PUMP HYGIENIC LTD. IT MUST NOT BE COPIED OR USED IN PART OR FULL WITHOUT PRIOR WRITTEN CONSENT.</p> | <p>UNLESS OTHERWISE STATED:</p> <p>ALL DIMENSIONS ± 2.50 ANGLES ±2.0°</p> <p>DO NOT SCALE THIS DRAWING REMOVE BURRS AND SHARP EDGES DIMENSIONS IN MILLIMETRES</p> <p>IF IN DOUBT ASK</p> | PROJECTION | DRAWN | CHECKED | TITLE: |
| | | |  | IPJB | DSB | <p>DRG. NO:</p> <p>GA4340</p> |