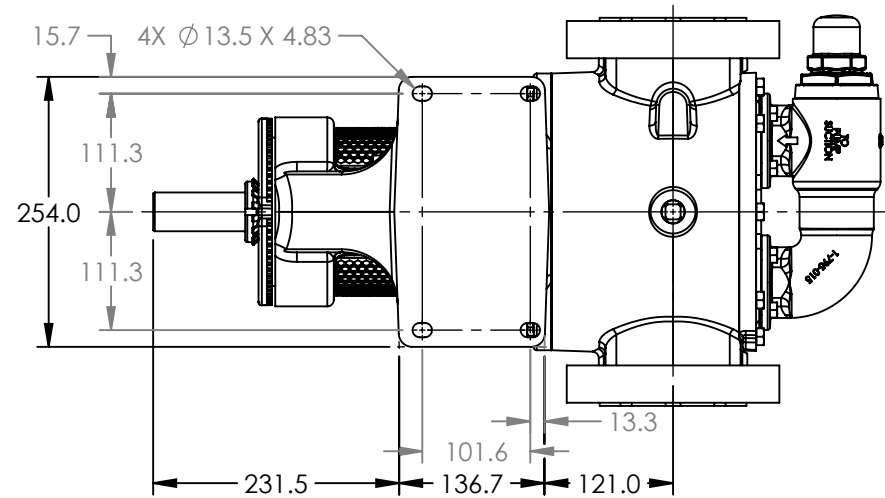
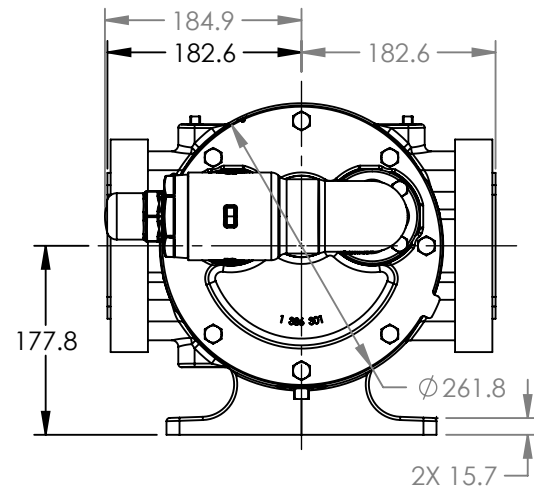
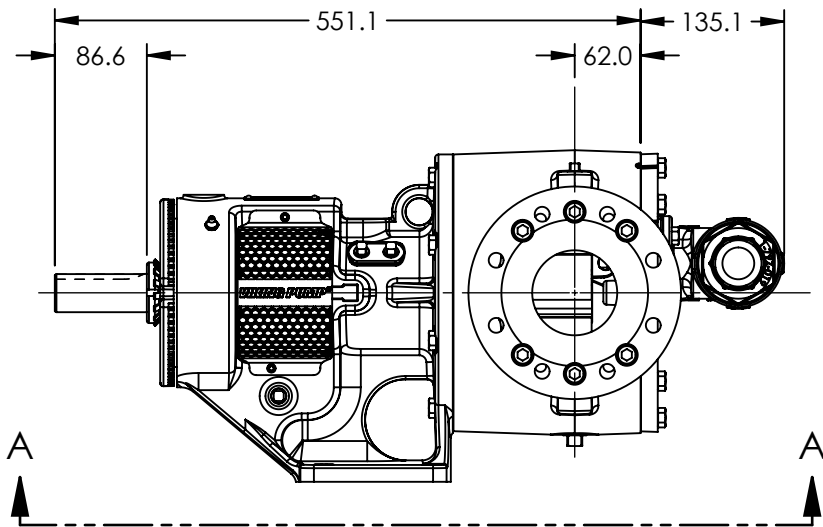


PORTS: 2X RAISED FACE FLANGES  
SUITABLE FOR USE WITH  
DIN 80 PN 16 FLANGES



VIEW A-A



MODELS WITH OPTIONAL FLANGED PORTS:  
LS123C, LS4123C, LS127C, LS1127C, LS4127C

NOTES:  
1. ALL DIMENSIONS ARE FOR REFERENCE ONLY.

STATE	Released	04/16/2024
DRAWN	dalcorn	07/25/2023
CHECKED	BA	04/16/2024

DIMENSIONS ARE IN  
MILLIMETERS  
PROJECT E330  
WAS:



VIKING PUMP, INC.  
A Unit of IDEX Corporation  
Cedar Falls, IA, 50613 U.S.A.  
VIKINGPUMP.COM

THIS DRAWING IS THE PROPERTY OF  
VIKING PUMP, INC. AND IS PROPRIETARY  
IN GENERAL AND DETAIL. IT SHALL NOT BE  
COPIED OR ITS CONTENTS REVEALED TO  
OUTSIDE PARTIES WITHOUT THE WRITTEN  
CONSENT OF VIKING PUMP, INC.

3D

DWG. NO.  
LV-4680

SHEET 1 OF 1

REV. A.1

04/16/2024