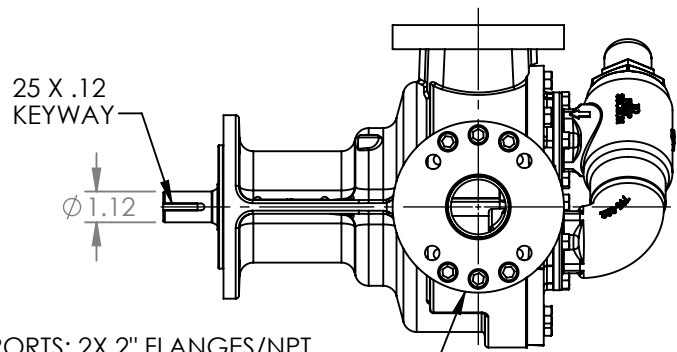


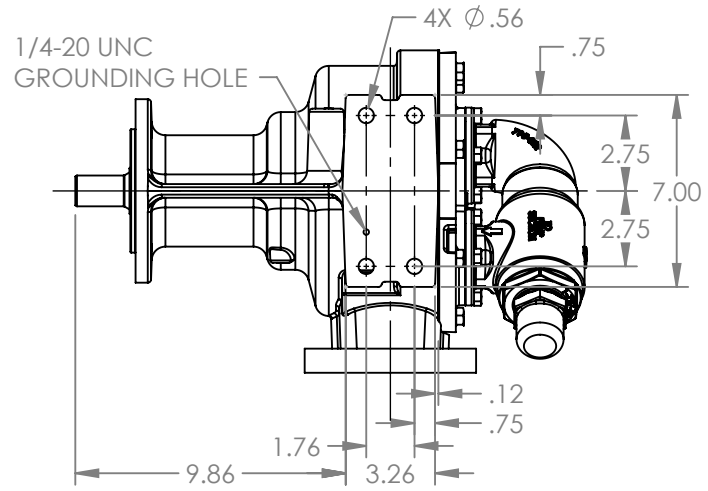
VIEW B-B
SCALE 1 : 10



25 X .12
KEYWAY

ϕ 1.12

PORTS: 2X 2" FLANGES/NPT
DRILLED AND TAPPED
SUITABLE FOR USE WITH
CLASS 125 ANSI FLANGES



1/4-20 UNC
GROUNDING HOLE

4X ϕ .56

.75

2.75

7.00

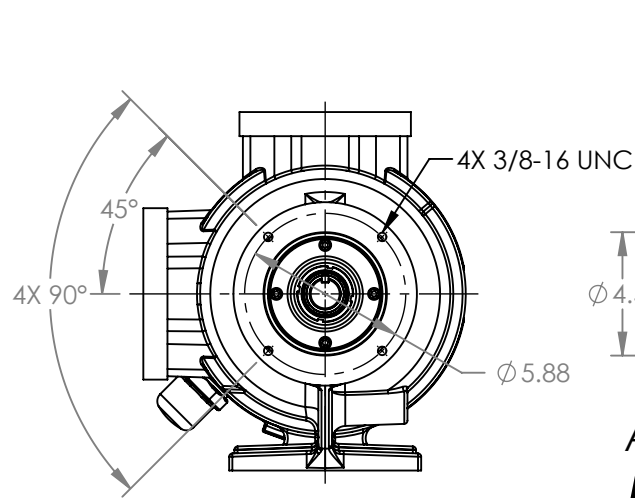
.12
.75

1.76

3.26

9.86

VIEW A-A

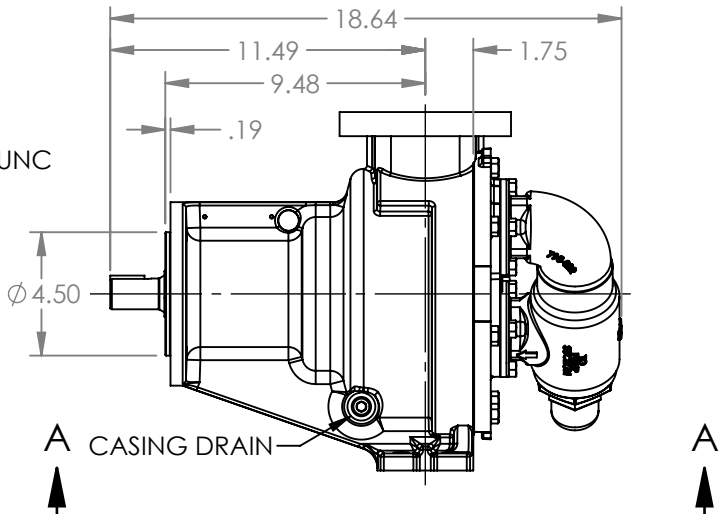


4X 90°

45°

4X 3/8-16 UNC

ϕ 5.88



A CASING DRAIN

18.64

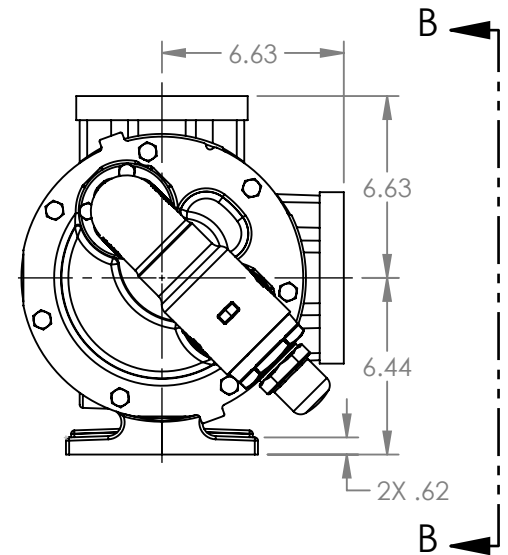
11.49

9.48

1.75

.19

ϕ 4.50



6.63

6.63

6.44

2X .62

STANDARD MODELS: RTPg20

NOTES:
1. ALL DIMENSIONS ARE FOR REFERENCE ONLY.

STATE	Released	06/12/2025
DRAWN	aries	Jun 12 2025 00:00 AM
CHECKED	JDP	06/12/2025

DIMENSIONS ARE IN INCHES
PROJECT: E397
WAS: EX-E397-06

VIKING PUMP
VIKING PUMP, INC.
A Unit of IDEX Corporation
Cedar Falls, IA 50613 U.S.A.
VIKINGPUMP.COM

THIS DRAWING IS THE PROPERTY OF
VIKING PUMP, INC. AND IS PROPRIETARY
IN GENERAL AND DETAIL. IT SHALL NOT BE
COPIED OR ITS CONTENTS REVEALED TO
OUTSIDE PARTIES WITHOUT THE WRITTEN
CONSENT OF VIKING PUMP, INC.

3D

DWG. NO.	LV-4770
----------	---------

SHEET 1 OF 1

REV. A.0
06/12/2025