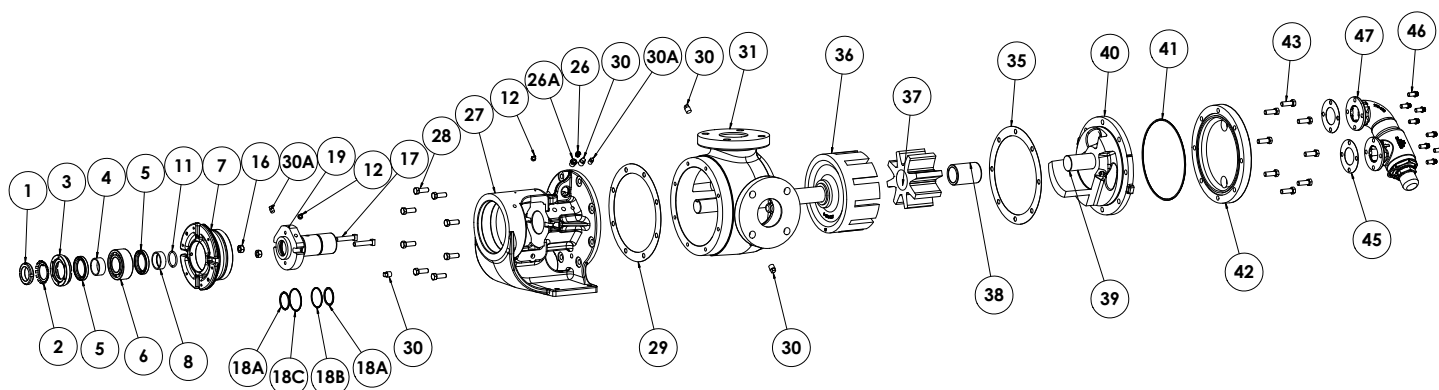


Exploded Diagram for 1124A Series™, Sizes H, HL, K, KK, L, LQ, LL, LS, Q, QS Seal Kits and Rebuild Kits

Rebuild Kit Only Applicable to Above PLUS (not pictured): 1224A Series™

Exploded diagram representative of 1124A Series™. For other series, see the Technical Service Manual (TSM) for your specific model. List of the TSMs below.



NOTE: Kit may not apply to all models of these pumps. Contact your Viking Pump distributor with pump serial number for correct kit part numbers for that pump. Both a Seal Kit and a Rebuild Kit are needed to completely rebuild the pump. Additional non-kit parts, such as Rotor and Shaft Assembly, may also be required, depending on wear.

ITEM	PART (may not exactly match parts list descriptions)	PART INCLUDED IN:		
		O-Pro™ Barrier Kit	O-Ring Kit	Rebuild Kit
1	Locknut	✓		
2	Lockwasher	✓		
3	End Cap for Bearing Housing			
4	Bearing Spacer Collar (Outer)	✓		
5	Lip Seal for Bearing Housing	✓		
6	Ball Bearing ②	✓		
7	Bearing Housing			
8	Bearing Spacer Collar (Inner)	✓		
11	Ring, Half Round, 2 Req'd (Except H, HL, Q, QS)	✓		
12	Grease Fitting	✓		
16	O-Pro™ Barrier Nut	✓		
17	O-Pro™ Barrier Capscrew	✓		
18A	Dynamic O-Ring	✓	✓	
18B	Inner Static O-Ring	✓	✓	
18C	Outer Static O-Ring	✓	✓	
19	O-Pro™ Barrier	✓		
26	Pressure Relief Fitting	✓		
26A	Reducer Bushing	✓		
27	Bracket			
28	Capscrew for Bracket ①			

ITEM	PART (may not exactly match parts list descriptions)	PART INCLUDED IN:		
		O-Pro™ Barrier Kit	O-Ring Kit	Rebuild Kit
29	Bracket Gasket	✓		
30	Pipe Plug	✓		
30A	Pipe Plug	✓		
31	Casing (tapped or flanged)			
35	Head Gasket	✓	✓	
36	Rotor and Shaft Assembly			
37	Idler and Bushing Assembly			✓
38	Idler bushing (part of 37)			
39	Idler Pin (part of 40)			
40	Head and Idler Pin Assembly			✓
41	O-Ring for Jacket Head Plate			
42	Jacket Head Plate			
43	Capscrews for Head ①			✓
45	Gaskets for Relief Valve			
46	Capscrews for Valve ①			✓
47	Relief Valve (or cover plate if less valve)			
Not illus.	Seal Installation Sleeves	✓	✓	
Not illus.	Jack Bolts	✓	✓	

① Quantity of capscrews depends on pump size.

② Q & QS size have two roller bearings (not illustrated)

Important safety information and rebuild instructions are found in the Technical Service Manual.

Download current Technical Service Manuals from www.vikingpump.com:

TSM 1400 – 124A Series™, 1124A Series™, 4124A Series™, 4124B Series™, 224A Series™, 1224A Series™, 4224A Series™, 4224B Series™, 324A Series™, 1324A Series™, 4324A Series™
Sizes G, H, HL, AK, AL, K, KK, L, LQ, LL, LS, Q, QS, M, N, R, RS