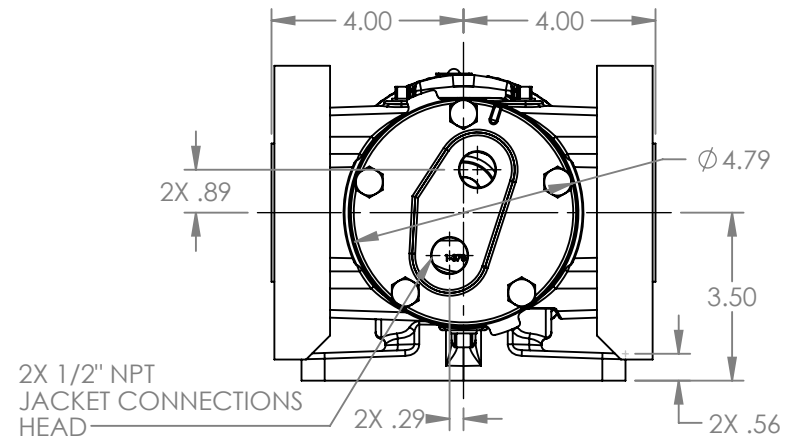
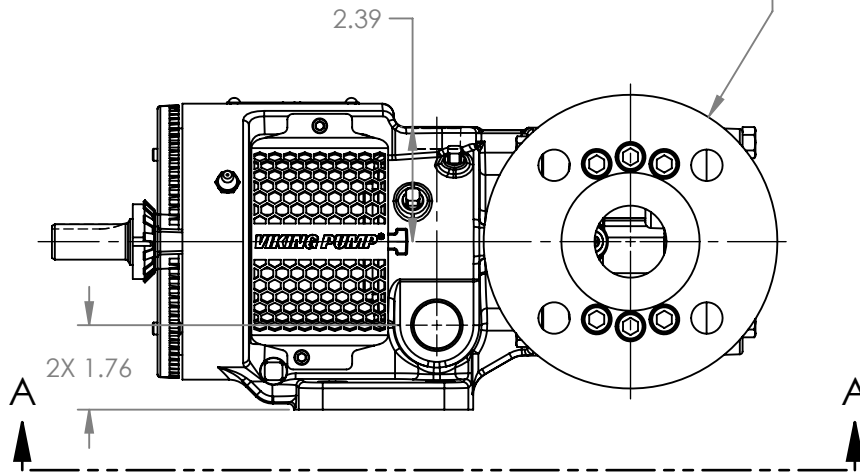


VIEW A-A

PORTS: 2X 1-1/2" RAISED FACE FLANGES  
 DRILLED AND TAPPED  
 SUITABLE FOR USE WITH  
 CLASS 300 ANSI FLANGES  
 (223C, 4223C, 227C, 1227C, 4227C)



MODELS WITH OPTIONAL FLANGED PORTS:  
 H223C, H4223C, H227C, H1227C, H4227C,  
 HL223C, HL4223C, HL227C, HL1227C, HL4227C

NOTES:  
 1. ALL DIMENSIONS ARE FOR REFERENCE ONLY.

|         |          |            |
|---------|----------|------------|
| STATE   | Released | 04/16/2024 |
| DRAWN   | dalcorn  | 07/14/2023 |
| CHECKED | BAM      | 04/16/2024 |

|                          |      |
|--------------------------|------|
| DIMENSIONS ARE IN INCHES |      |
| PROJECT:                 | E330 |
| WAS:                     |      |



VIKING PUMP, INC.  
 A Unit of IDEX Corporation  
 Cedar Falls, IA 50613 U.S.A.  
 VIKINGPUMP.COM

THIS DRAWING IS THE PROPERTY OF VIKING PUMP, INC. AND IS PROPRIETARY IN GENERAL AND DETAIL. IT SHALL NOT BE COPIED OR ITS CONTENTS REVEALED TO OUTSIDE PARTIES WITHOUT THE WRITTEN CONSENT OF VIKING PUMP, INC.

3D

DWG. NO.  
 HV-4206

SHEET 1 OF 1

REV. A.1

04/16/2024