

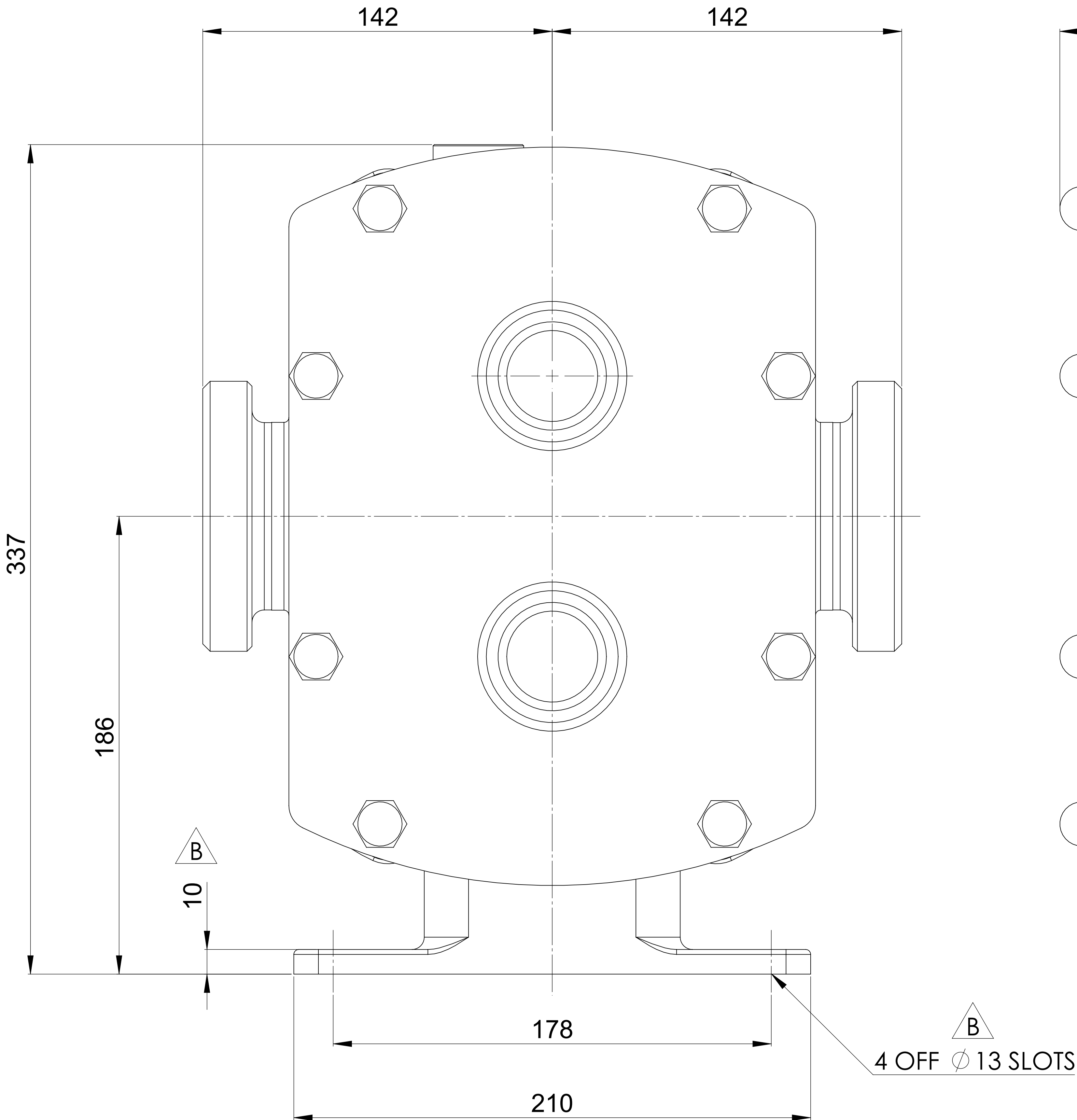
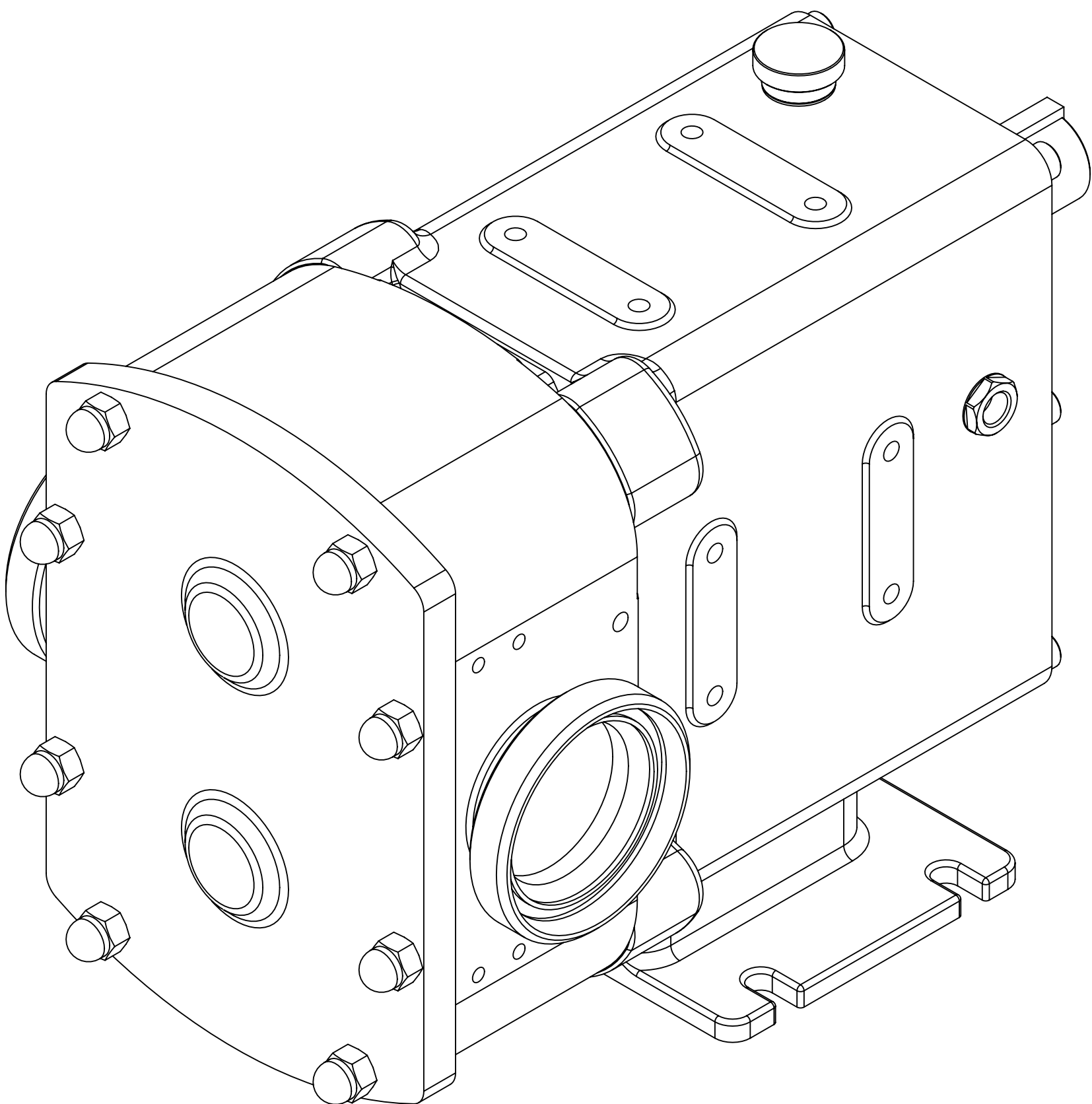
GENERAL ARRANGEMENT DETAILS

PUMP INFORMATION

PUMP MODEL	REVOLUTION - TWIN WING R1300X/14
LEFT/TOP CONNECTION	3" DIN 11851 Male
RIGHT/BOTTOM CONNECTION	3" DIN 11851 Male
DRIVE SHAFT POSITION	TOP SHAFT DRIVE
FRONT COVER ADDITIONS	STANDARD
ROTORCASE ADDITIONS	STANDARD
GEARBOX ADDITIONS	STANDARD
PUMP ADDITIONS	STANDARD

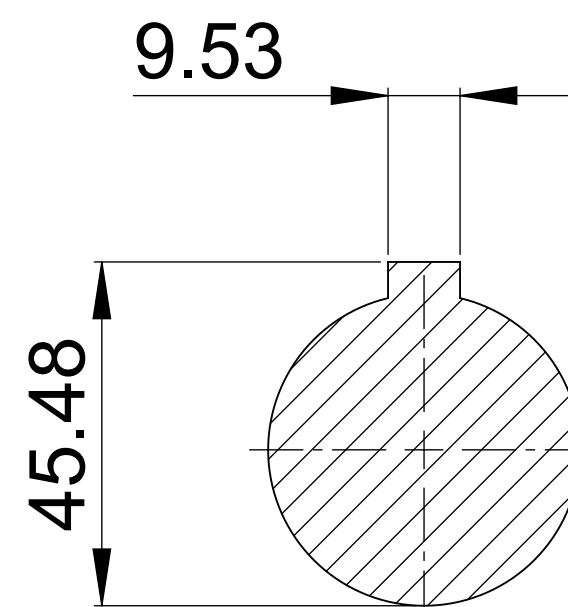
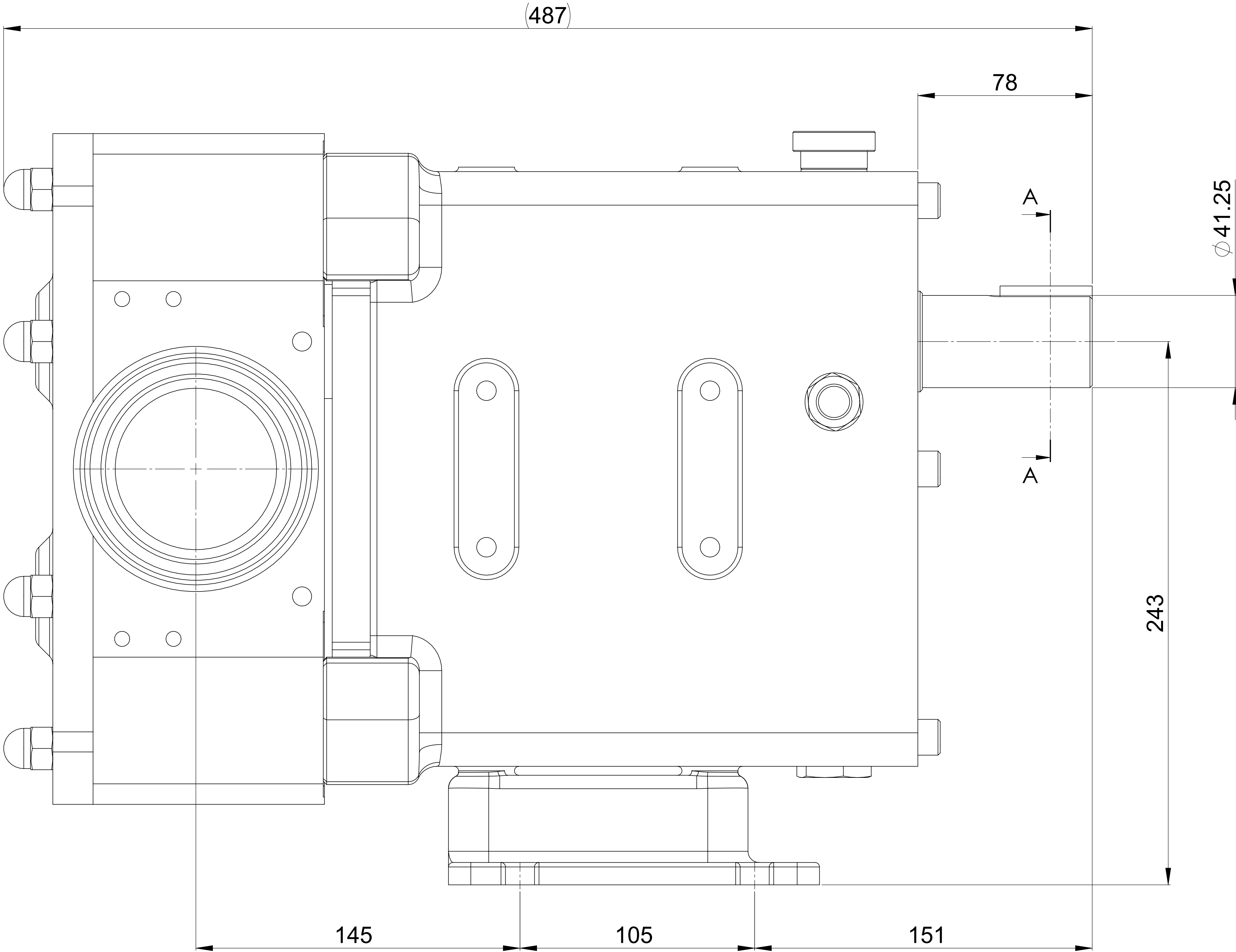
THIS IS NOT A CERTIFIED DRAWING, USE FOR GENERAL
INSTALLATION ONLY

B



B

4 OFF Ø 13 SLOTS



SECTION A-A

B

UPDATED FORMAT, CORRECTED SLOT CALLOUT

B 12/09/2024

ISSUE

A 21/09/2017

AMENDMENT

ISSUE DATE

VIKING PUMP
HYGIENIC

HIGHFIELD INDUSTRIAL ESTATE,
EAST SUSSEX, BN23 6PT
TEL: (+44) 1323 509211

COPYRIGHT:

THIS DRAWING IS THE SOLE
PROPERTY OF
VIKING PUMP HYGIENIC LTD.
IT MUST NOT BE COPIED OR USED
IN PART OR FULL WITHOUT PRIOR
WRITTEN CONSENT.

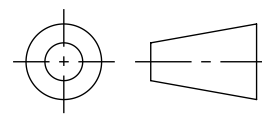
UNLESS OTHERWISE STATED:

ALL DIMENSIONS ± 2.50
ANGLES ±2.0°

DO NOT SCALE THIS DRAWING
REMOVE BURRS AND SHARP EDGES
DIMENSIONS IN MILLIMETRES

IF IN DOUBT ASK

PROJECTION



DRAWN

MR

CHECKED

KCB

TITLE:

GENERAL ARRANGEMENT

DRG. NO:

GA3758