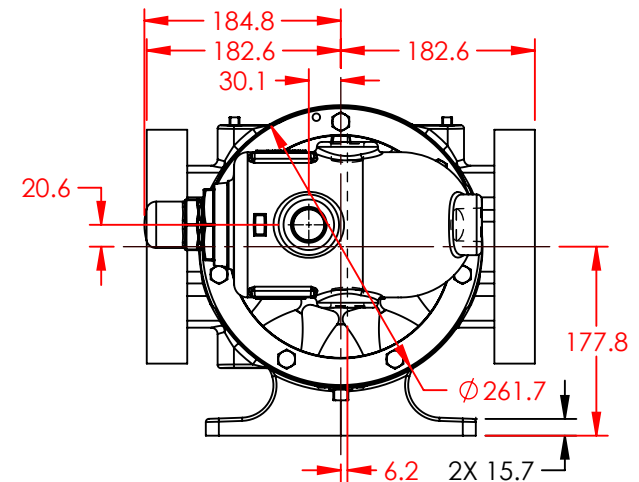
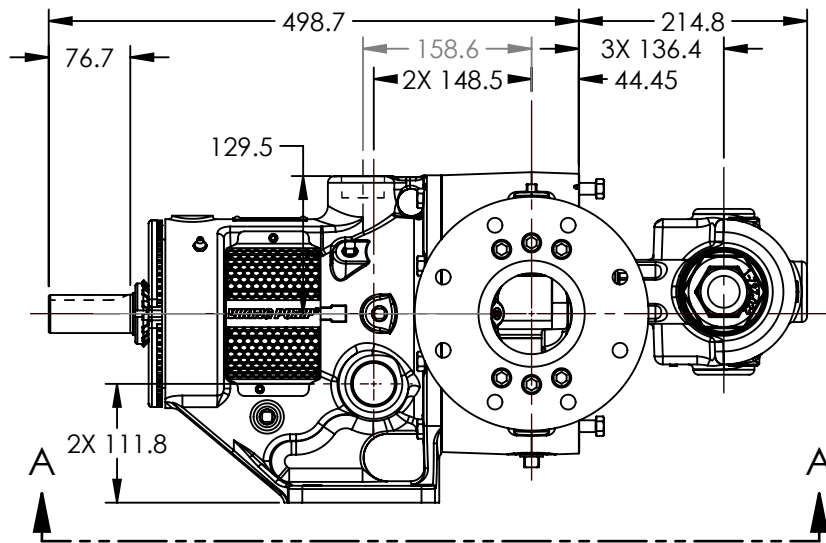
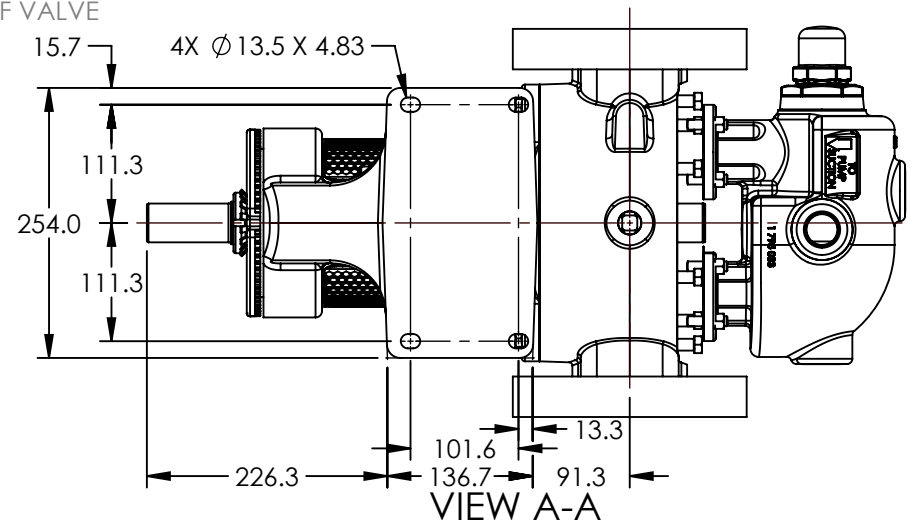


PORTS: 2X FLANGES SUITABLE FOR USE WITH DIN 100 PN 16 FLANGES



MODELS WITH OPTIONAL FLANGED PORTS:
L223C, L4223C, L227C, L1227C, L4227C

NOTES:
1. ALL DIMENSIONS ARE FOR REFERENCE ONLY.

STATE	Released	04/16/2024
DRAWN	dalcorn	07/25/2023
CHECKED	JB	04/16/2024

DIMENSIONS ARE IN MILLIMETERS

PROJECT E330

WAS:



THIS DRAWING IS THE PROPERTY OF VIKING PUMP, INC. AND IS PROPRIETARY IN GENERAL AND DETAIL. IT SHALL NOT BE COPIED OR ITS CONTENTS REVEALED TO OUTSIDE PARTIES WITHOUT THE WRITTEN CONSENT OF VIKING PUMP, INC.

3D

DWG. NO.
LV-4663

SHEET 1 OF 1

REV. A.1

04/16/2024