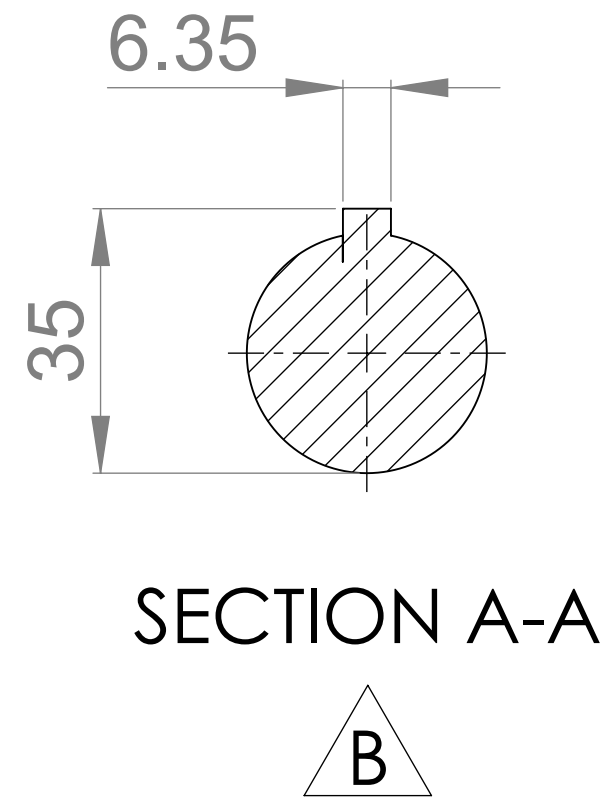
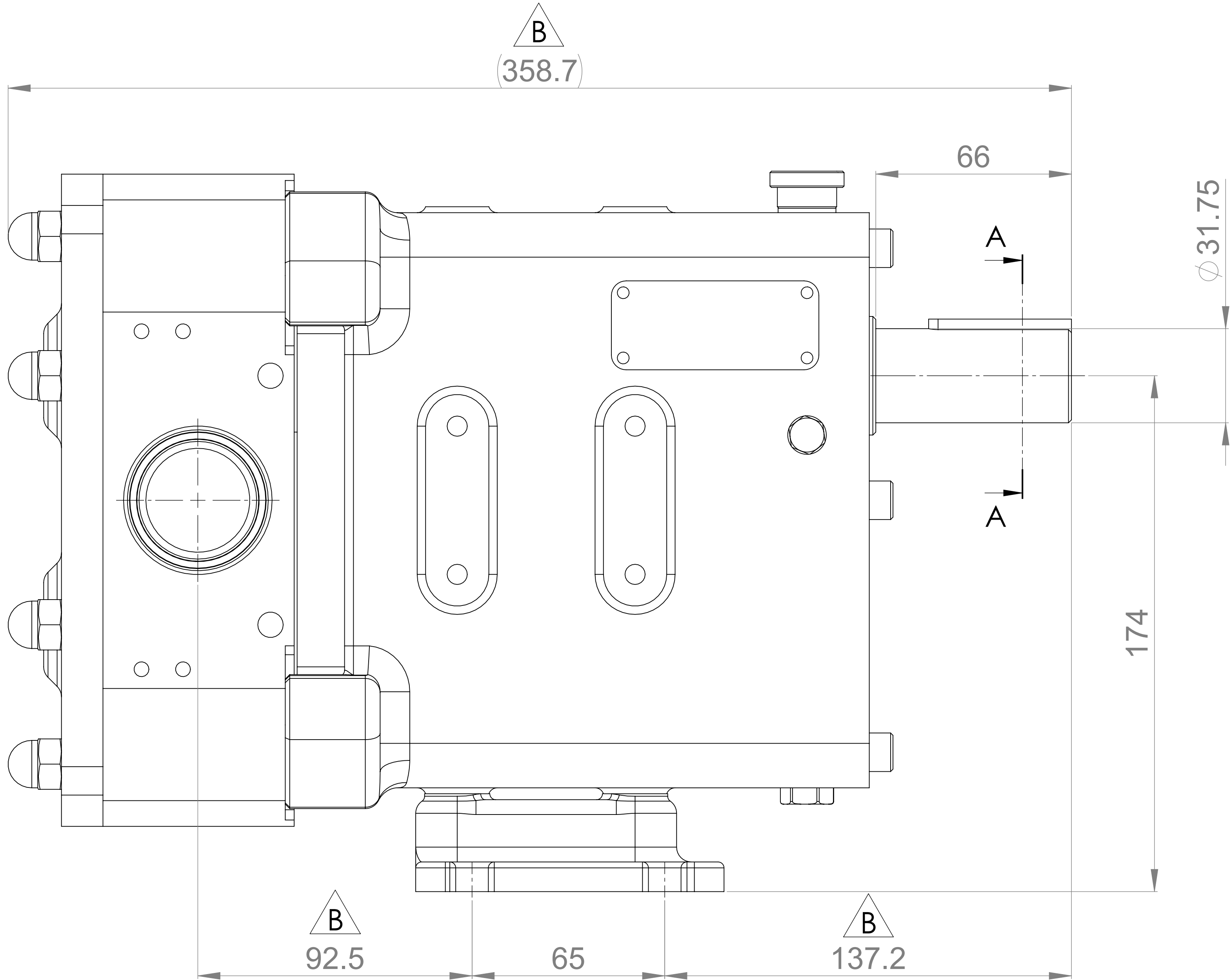
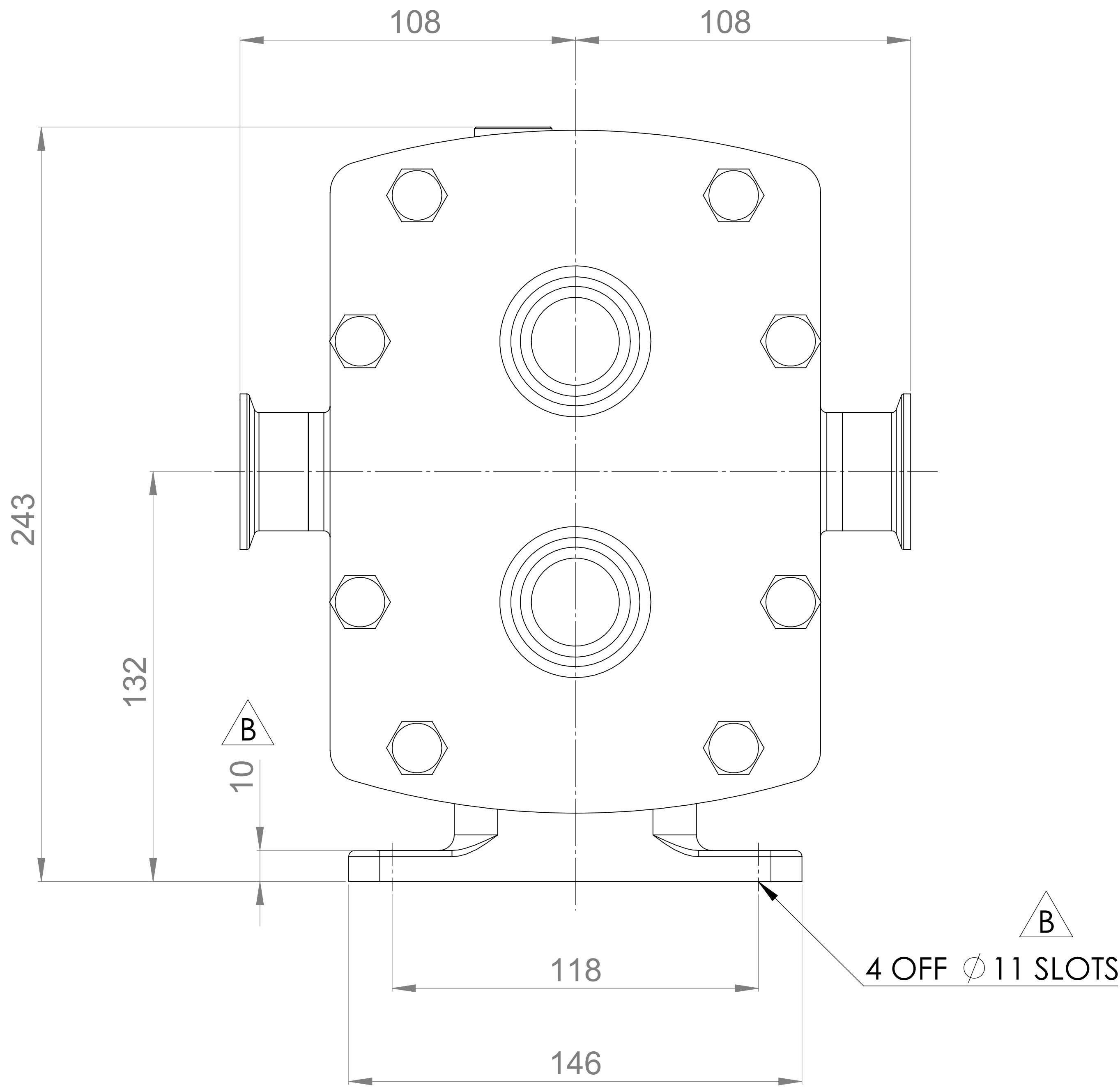
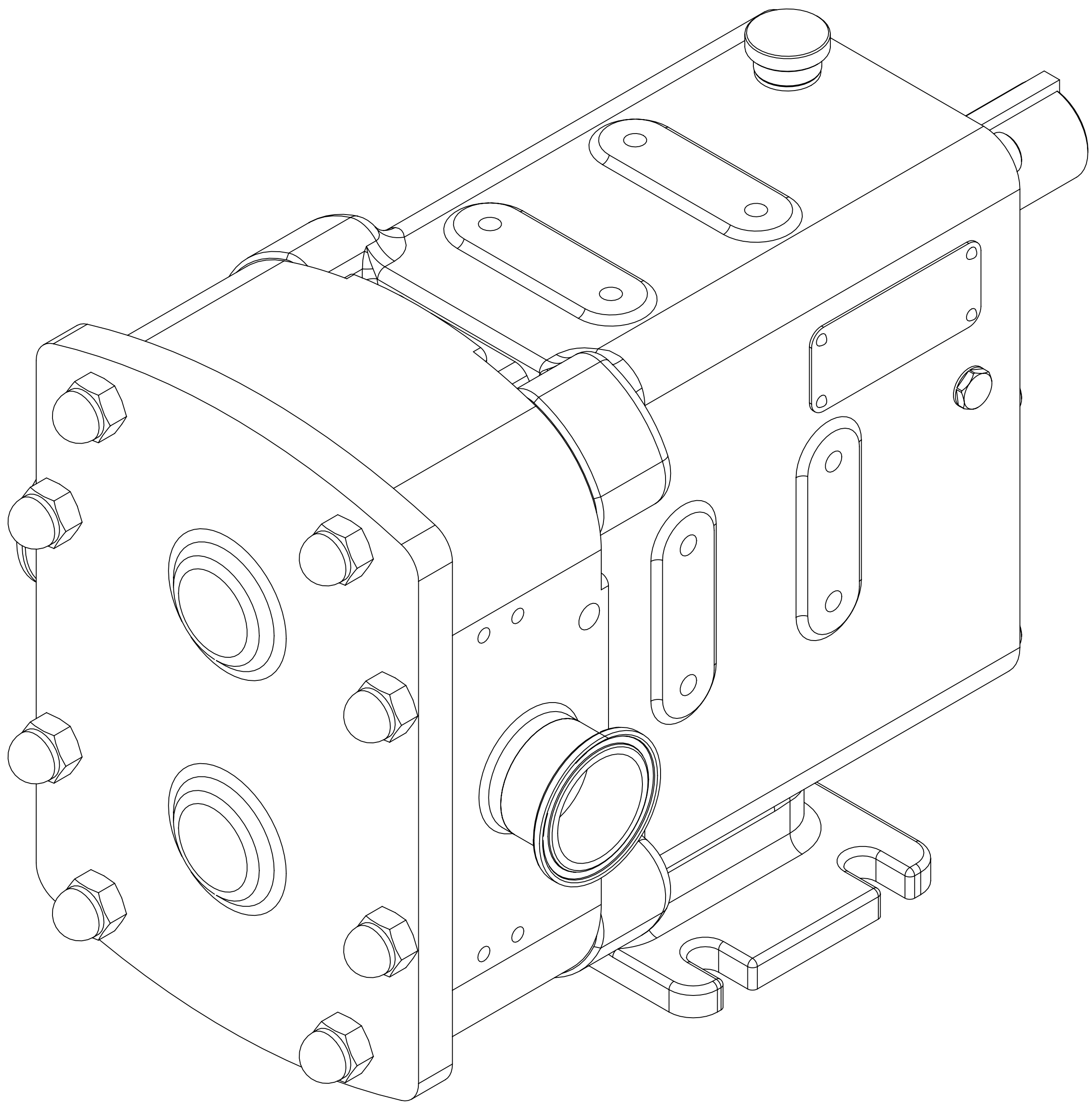
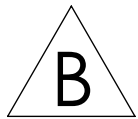


GENERAL ARRANGEMENT DETAILS

PUMP INFORMATION

PUMP MODEL	REVOLUTION - TWIN WING R0300X/17
LEFT/TOP CONNECTION	1.5" TRI-CLAMP (3A)
RIGHT/BOTTOM CONNECTION	1.5" TRI-CLAMP (3A)
DRIVE SHAFT POSITION	TOP SHAFT DRIVE
FRONT COVER ADDITIONS	STANDARD
ROTORCASE ADDITIONS	STANDARD
GEARBOX ADDITIONS	STANDARD
PUMP ADDITIONS	STANDARD

THIS IS NOT A CERTIFIED DRAWING, USE FOR GENERAL
INSTALLATION ONLY



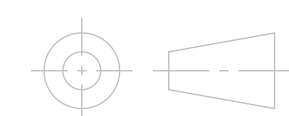
UPDATED FORMAT AND PRECISION, CORRECTED SLOT CALLOUT	B	10/09/2024
ISSUE	A	13/04/2017
AMENDMENT	ISSUE	DATE

VIKING PUMP
HYGIENIC
HIGHFIELD INDUSTRIAL ESTATE,
EASTBOURNE,
EAST SUSSEX, BN23 6PT
TEL: (+44) 1323 509211

COPYRIGHT:
THIS DRAWING IS THE SOLE
PROPERTY OF
VIKING PUMP HYGIENIC LTD.
IT MUST NOT BE COPIED OR USED
IN PART OR FULL WITHOUT PRIOR
WRITTEN CONSENT.

UNLESS OTHERWISE STATED:
ALL DIMENSIONS ± 2.50
ANGLES ±2.0°
DO NOT SCALE THIS DRAWING
REMOVE BURRS AND SHARP EDGES
DIMENSIONS IN MILLIMETRES
IF IN DOUBT ASK

PROJECTION



DRAWN

KCB

CHECKED

IPJB

TITLE:

GENERAL ARRANGEMENT

DRG. NO:

GA3617