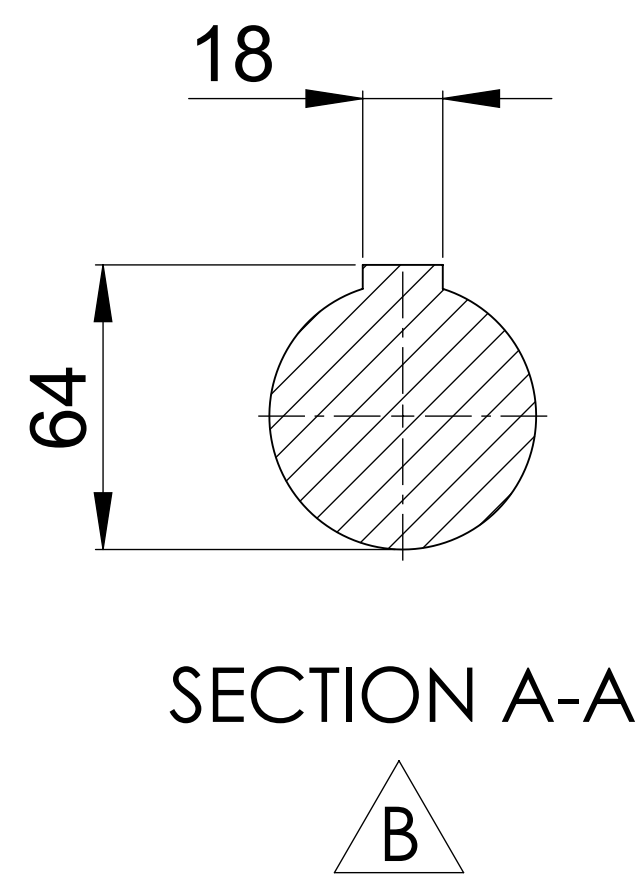
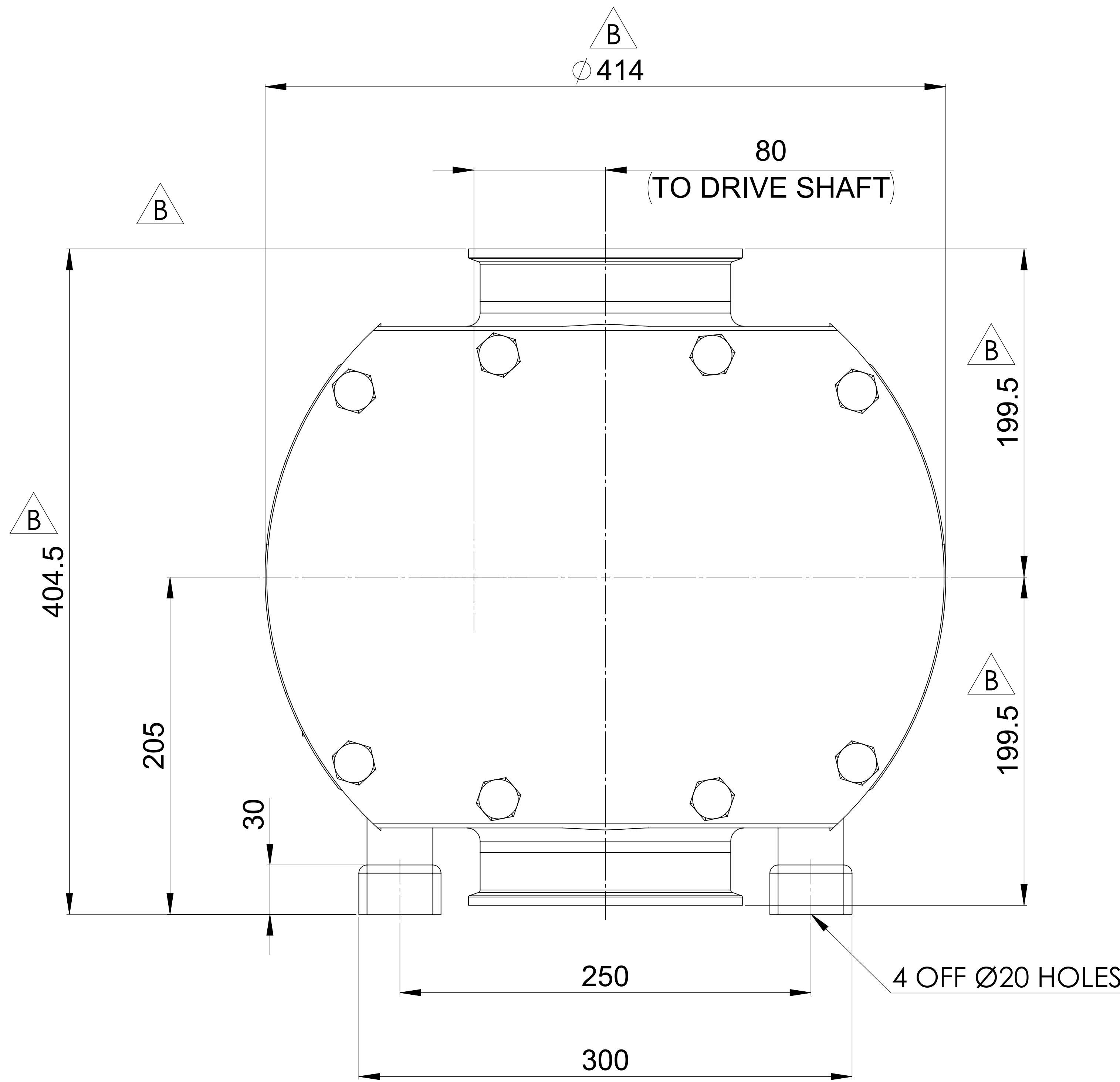
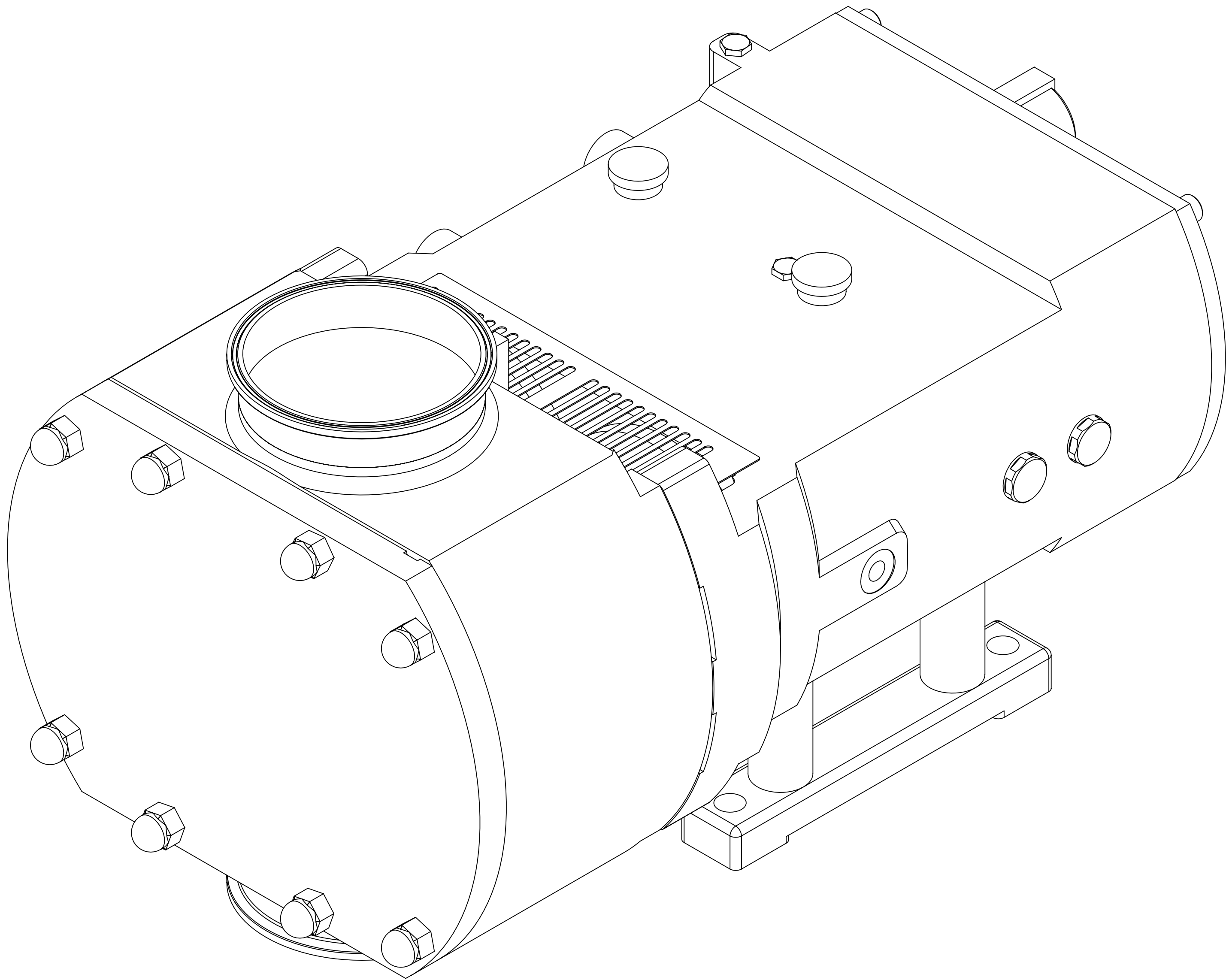


GENERAL ARRANGEMENT DETAILS


PUMP INFORMATION

PUMP MODEL	MULTIPUMP MP50/0525/08
LEFT/TOP CONNECTION	6" TRI-CLAMP
RIGHT/BOTTOM CONNECTION	6" TRI-CLAMP
DRIVE SHAFT POSSITION	LEFT HAND DRIVE
FRONT COVER ADDITIONS	STANDARD
ROTORCASE ADDITIONS	STANDARD
GEARBOX ADDITIONS	STANDARD
PUMP ADDITIONS	STANDARD

THIS IS NOT A CERTIFIED DRAWING, USE FOR GENERAL
INSTALLATION ONLY



UPDATED PRECISION, ADDED KEYWAY DETAIL	B	10/10/2024
ISSUED	A	03/11/2020
AMENDMENT	ISSUE	DATE

VIKING PUMP® HYGIENIC HIGHFIELD INDUSTRIAL ESTATE, EASTBOURNE, EAST SUSSEX, BN23 6PT TEL: (+44) 1323 509211	COPYRIGHT: THIS DRAWING IS THE SOLE PROPERTY OF VIKING PUMP HYGIENIC LTD. IT MUST NOT BE COPIED OR USED IN PART OR FULL WITHOUT PRIOR WRITTEN CONSENT.	UNLESS OTHERWISE STATED: ALL DIMENSIONS ± 2.50 ANGLES ±2.0° DO NOT SCALE THIS DRAWING REMOVE BURRS AND SHARP EDGES DIMENSIONS IN MILLIMETRES IF IN DOUBT ASK	PROJECTION	DRAWN	CHECKED	GENERAL ARRANGEMENT
				KCB	IPJB	DRG. NO: GA4490