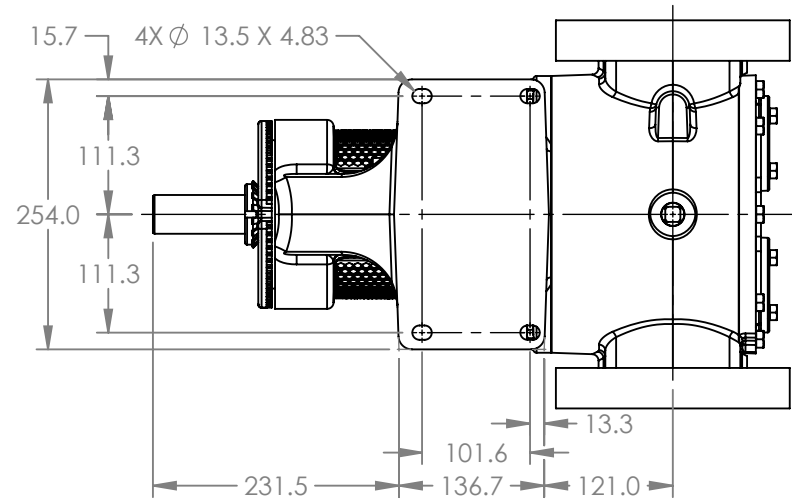
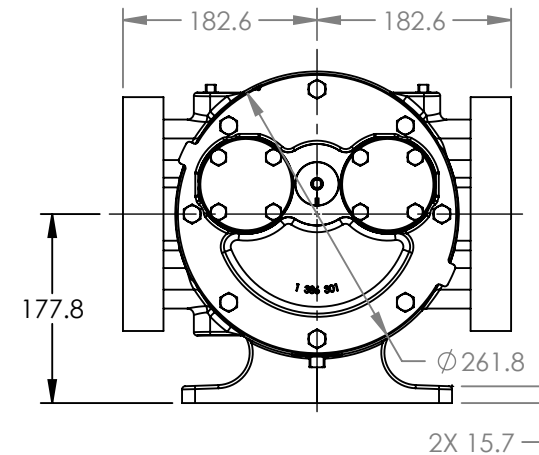
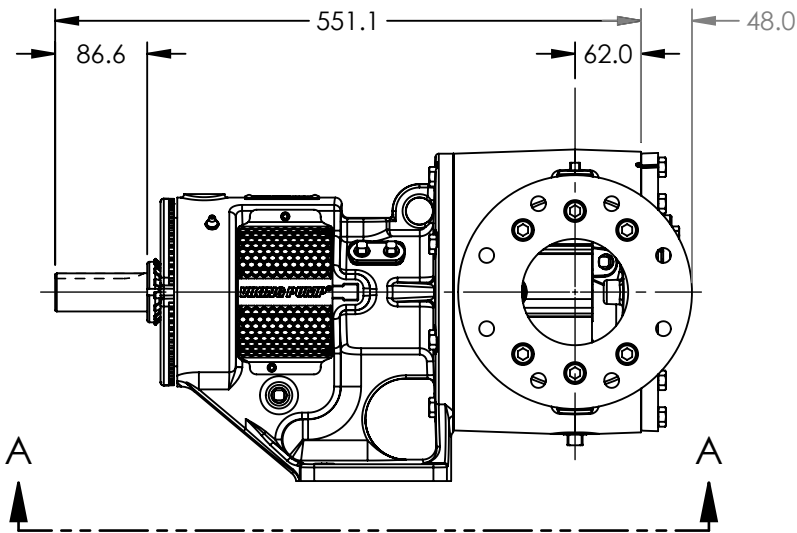


PORTS: 2X FLANGES
SUITABLE FOR USE WITH
DIN 100 PN 16 FLANGES



VIEW A-A



MODELS WITH OPTIONAL FLANGED PORTS:
LS123C, LS4123C, LS127C, LS1127C, LS4127C

NOTES:
1. ALL DIMENSIONS ARE FOR REFERENCE ONLY.

| | | |
|---------|----------|------------|
| STATE | Released | 04/16/2024 |
| DRAWN | dalcorn | 07/25/2023 |
| CHECKED | BA | 04/16/2024 |

DIMENSIONS ARE IN
MILLIMETERS
PROJECT E330
WAS:



VIKING PUMP, INC.
A Unit of IDEX Corporation
Cedar Falls, IA, 50613 U.S.A.
VIKINGPUMP.COM

THIS DRAWING IS THE PROPERTY OF
VIKING PUMP, INC. AND IS PROPRIETARY
IN GENERAL AND DETAIL. IT SHALL NOT BE
COPIED OR ITS CONTENTS REVEALED TO
OUTSIDE PARTIES WITHOUT THE WRITTEN
CONSENT OF VIKING PUMP, INC.

3D

DWG. NO.
LV-4684

SHEET 1 OF 1

REV. A.1

04/16/2024