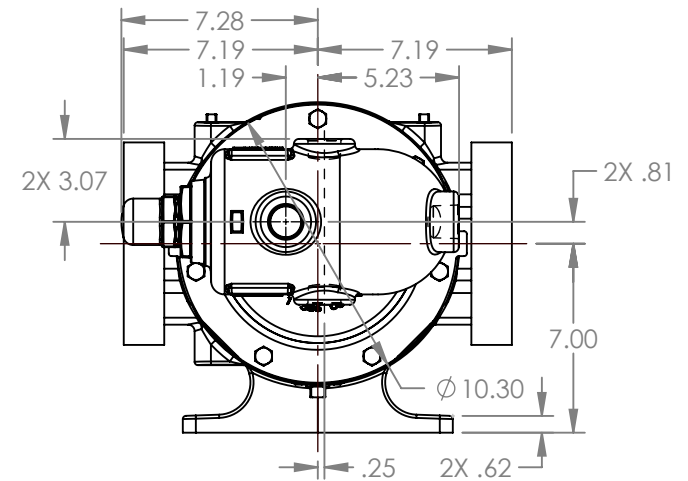
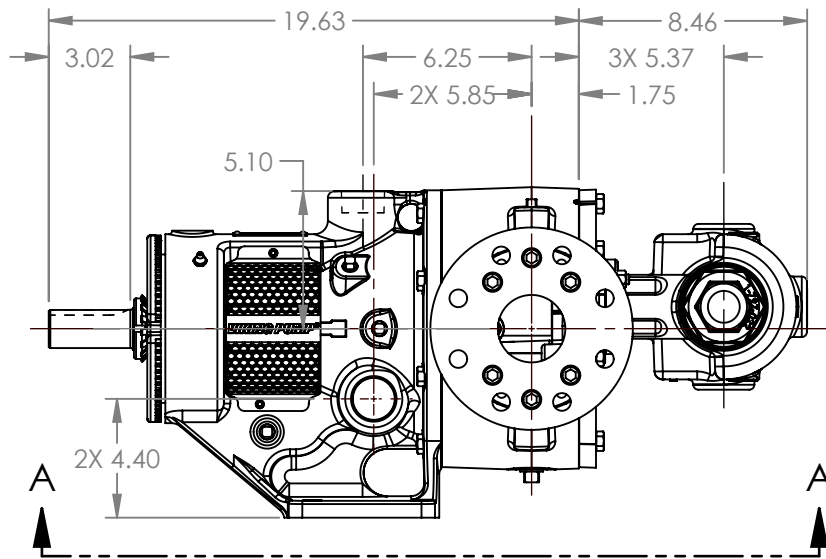


PORTS: 2X 2-1/2" FLANGES  
 DRILLED AND TAPPED  
 SUITABLE FOR USE WITH  
 CLASS 300 ANSI FLANGES  
 (223C, 4223C, 227C, 1227C, 4227C)



MODELS WITH OPTIONAL FLANGED PORTS:  
 L223C, L4223C, L227C, L1227C, L4227C

NOTES:  
 1. ALL DIMENSIONS ARE FOR REFERENCE ONLY.

STATE	Released	04/16/2024
DRAWN	dalcom	07/19/2023
CHECKED	JB	04/16/2024

DIMENSIONS ARE IN INCHES
PROJECT: E330
WAS:



VIKING PUMP, INC.  
 A Unit of IDEX Corporation  
 Cedar Falls, IA 50613 U.S.A.  
 VIKINGPUMP.COM

THIS DRAWING IS THE PROPERTY OF  
 VIKING PUMP, INC. AND IS PROPRIETARY  
 IN GENERAL AND DETAIL. IT SHALL NOT BE  
 COPIED OR ITS CONTENTS REVEALED TO  
 OUTSIDE PARTIES WITHOUT THE WRITTEN  
 CONSENT OF VIKING PUMP, INC.

3D

DWG. NO.  
 LV-4588

SHEET 1 OF 1

REV. A.1

04/16/2024