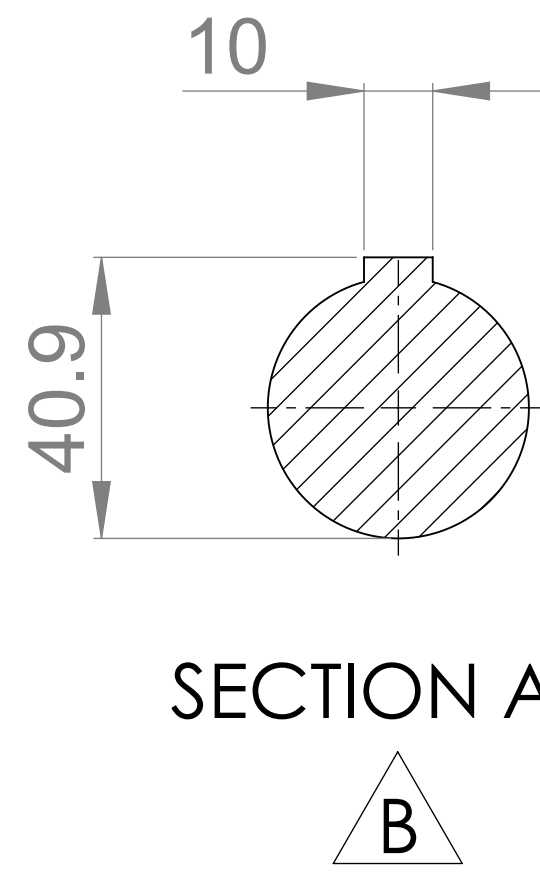
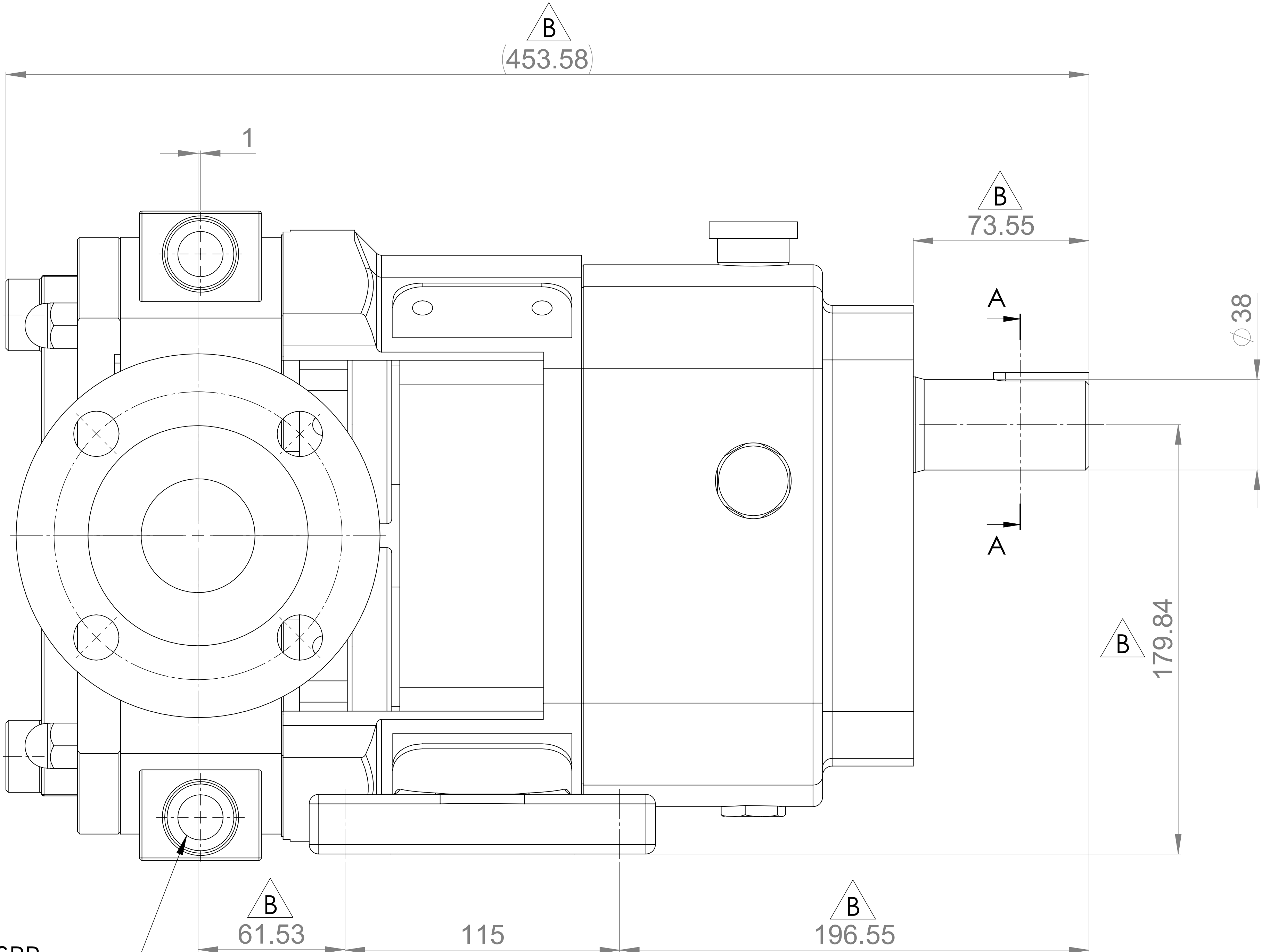
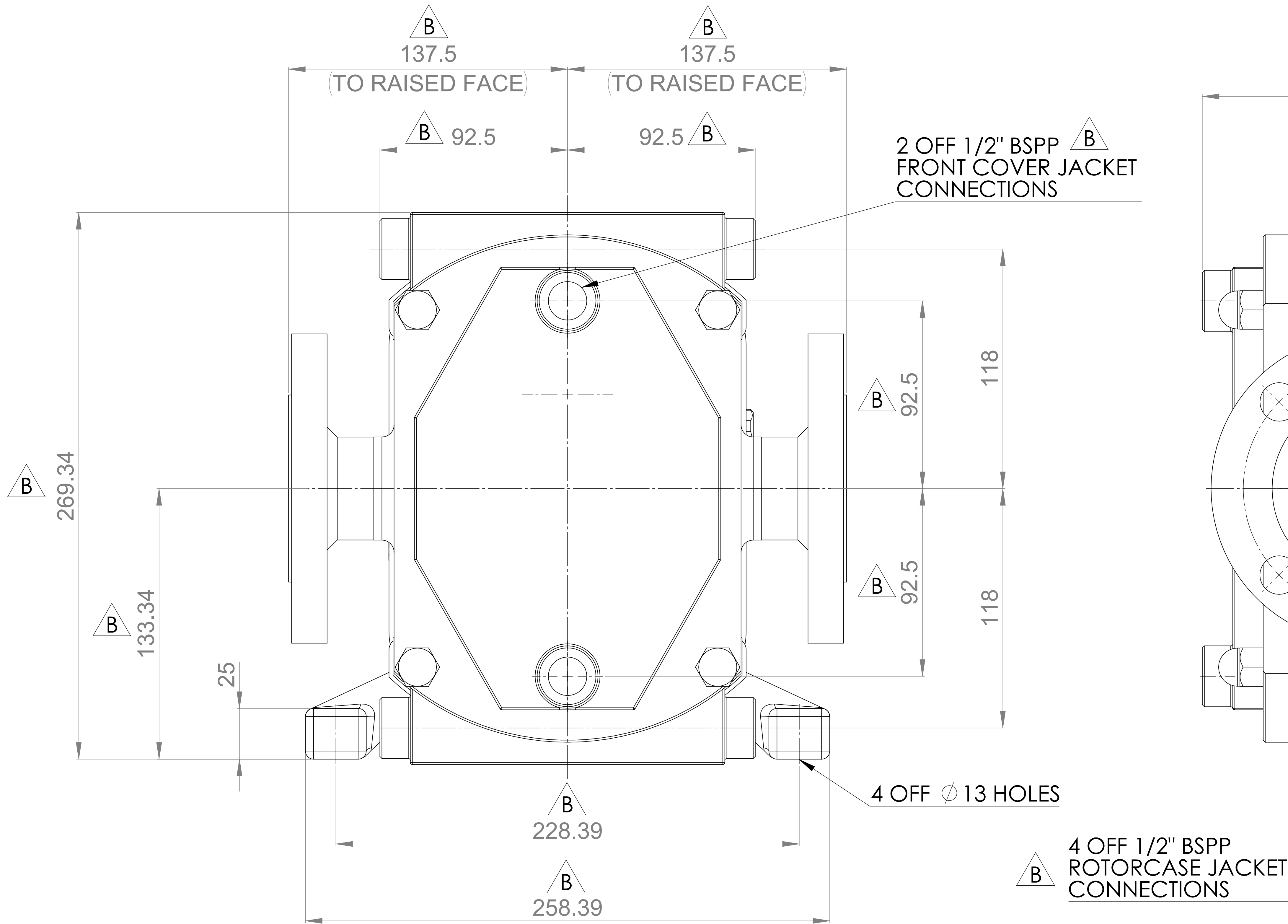
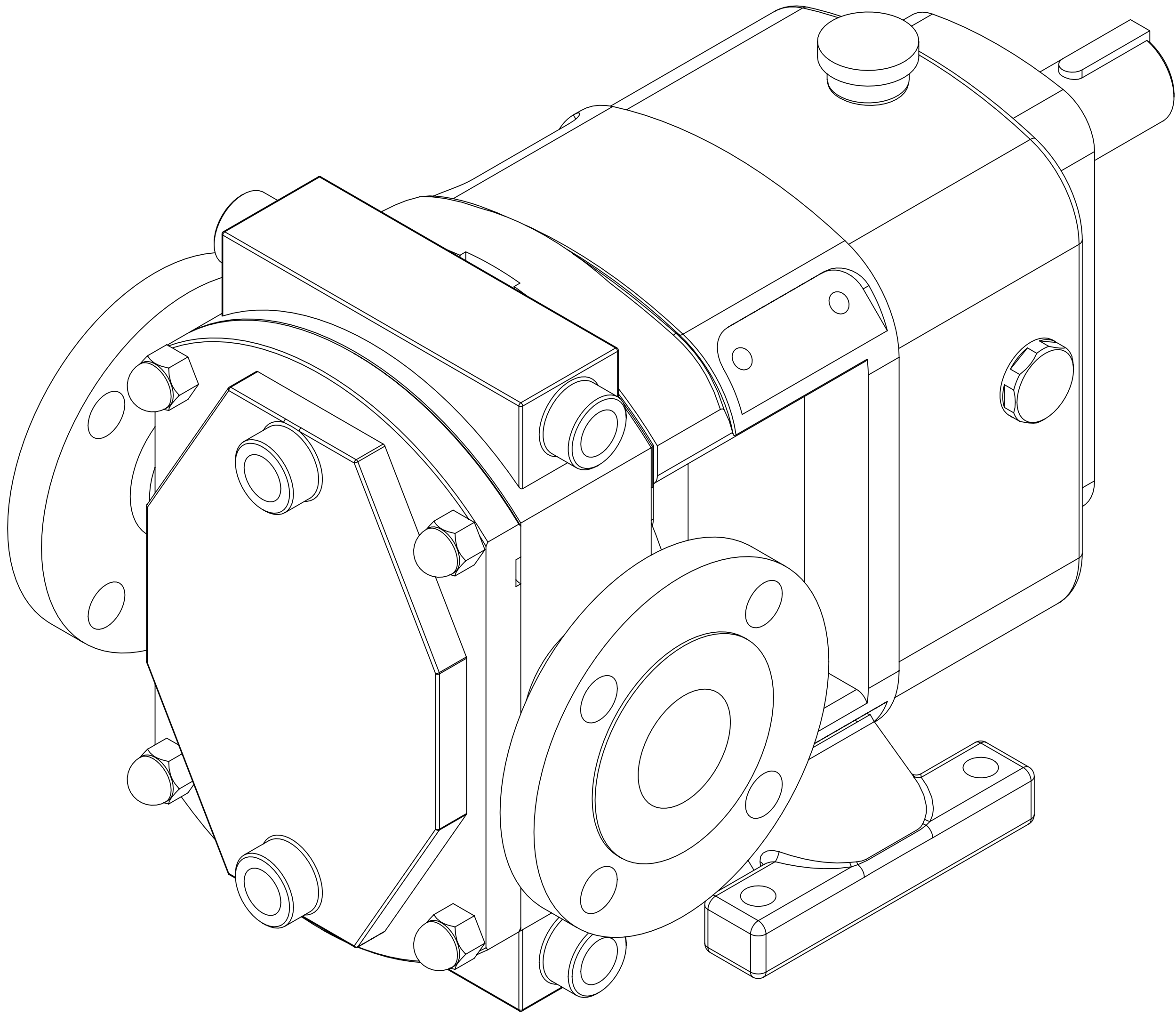


GENERAL ARRANGEMENT DETAILS

PUMP INFORMATION

PUMP MODEL	CLASSIC+ CP30/0069/12
LEFT/TOP CONNECTION	2" ASA/ANSI 150 lb RF
RIGHT/BOTTOM CONNECTION	2" ASA/ANSI 150 lb RF
DRIVE SHAFT POSITION	TOP SHAFT DRIVE
FRONT COVER ADDITIONS	FRONT COVER JACKET
ROTORCASE ADDITIONS	ROTORCASE JACKET
GEARBOX ADDITIONS	STANDARD
PUMP ADDITIONS	STANDARD

THIS IS NOT A CERTIFIED DRAWING, USE FOR GENERAL  
INSTALLATION ONLY



UPDATED FORMAT AND PRECISION	B	17/10/2024
ISSUED	A	24/09/2020
AMENDMENT	ISSUE	DATE

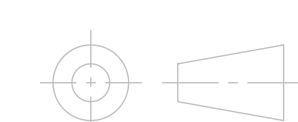


HIGHFIELD INDUSTRIAL ESTATE,  
EAST SUSSEX, BN23 6PT  
TEL: (+44) 1323 509211

**COPYRIGHT:**  
THIS DRAWING IS THE SOLE  
PROPERTY OF  
**VIKING PUMP HYGIENIC LTD.**  
IT MUST NOT BE COPIED OR USED  
IN PART OR FULL WITHOUT PRIOR  
WRITTEN CONSENT.

UNLESS OTHERWISE STATED:  
ALL DIMENSIONS ± 2.50  
ANGLES ±2.0°  
DO NOT SCALE THIS DRAWING  
REMOVE BURRS AND SHARP EDGES  
DIMENSIONS IN MILLIMETRES  
**IF IN DOUBT ASK**

PROJECTION



DRAWN

IPJB

CHECKED

KCB

TITLE:

GENERAL ARRANGEMENT

DRG. NO:

**GA4470**