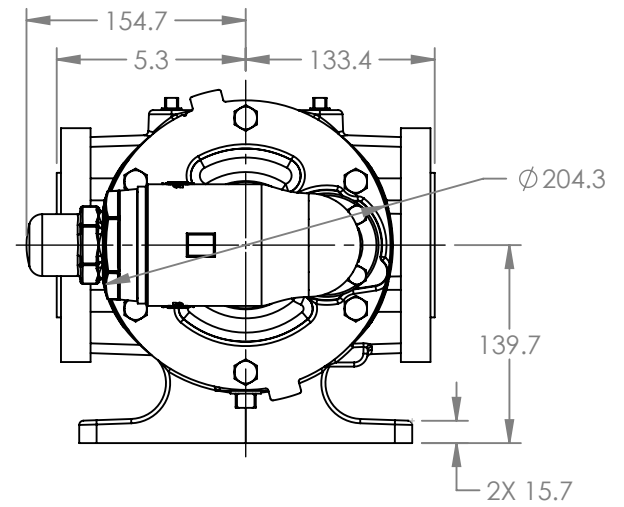
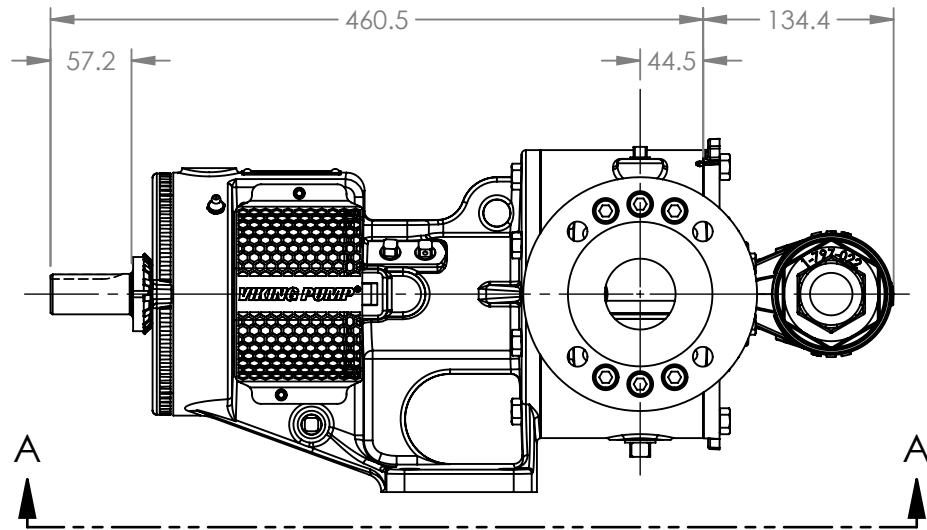
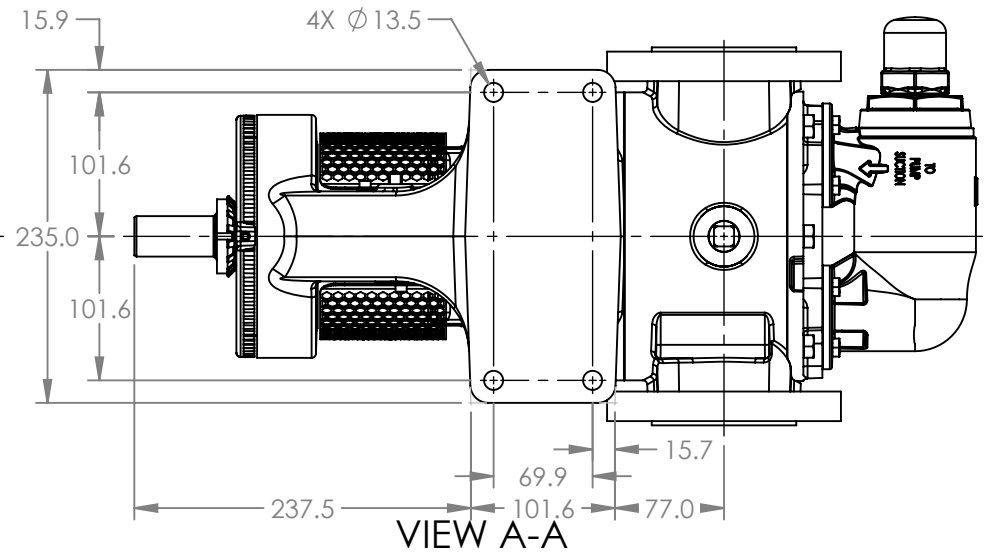


PORTS: 2X RAISED FACE FLANGES
SUITABLE FOR USE WITH
DIN 50 PN 16 FLANGES



MODELS WITH OPTIONAL FLANGED PORTS:
K123C, K4123C, K127C, K1127C, K4127C, KK4123C, KK4127C, KK1127C, KK4127C

NOTES:
1. ALL DIMENSIONS ARE FOR REFERENCE ONLY.

STATE	Released	04/16/2024
DRAWN	dalcom	07/24/2023
CHECKED	DTL	04/16/2024

DIMENSIONS ARE IN
MILLIMETERS
PROJECT E330
WAS:

VIKING PUMP
VIKING PUMP, INC.
A Unit of IDEX Corporation
Cedar Falls, IA, 50613 U.S.A.
VIKINGPUMP.COM

THIS DRAWING IS THE PROPERTY OF
VIKING PUMP, INC. AND IS PROPRIETARY
IN GENERAL AND DETAIL. IT SHALL NOT BE
COPIED OR ITS CONTENTS REVEALED TO
OUTSIDE PARTIES WITHOUT THE WRITTEN
CONSENT OF VIKING PUMP, INC.

3D DWG. NO.
KV-2692

SHEET 1 OF 1

REV. A.1
04/16/2024