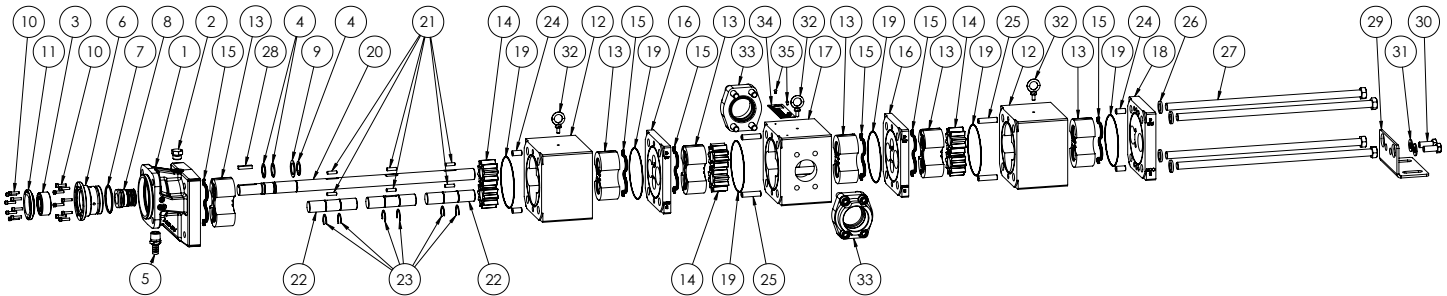


Exploded Diagram for GB-410 Series™ Seal Kits and Rebuild Kits

MODELS: GB-41039-G00, GB-41039-G10



NOTE: Kit may not apply to all models of these pumps. Contact your Viking Pump Representative with pump serial number for correct kit part numbers for that pump. The complete Rebuild Kit is needed to completely rebuild the pump. Additional parts kits, such as shaft kits, seal kits, and section kits may also be used, depending on wear.

| ITEM | PART (may not exactly match parts list descriptions) | PART INCLUDED IN: | |
|------|---|-------------------|------------------------------------|
| | | Seal Kit | Complete Rebuild Kit (Recommended) |
| 1 | Bracket | | |
| 2 | Plug | | |
| 3 | Double Row Ball Bearing | ✓ | ✓ |
| 4 | External Retaining Rings | ✓ | ✓ |
| 5 | Hose Barb Fitting | | |
| 6 | T1 Seal Holder | | |
| 7 | Seal Holder Oring | ✓ | ✓ |
| 8 | Mech Seal - TFE/P - SIL - CAB | ✓ | ✓ |
| 9 | Seal Washer | ✓ | ✓ |
| 10 | Cap Screws | ✓ | ✓ |
| 11 | Bearing End Cap | | |
| 12 | Casing - No Ports | | |
| 13 | PBBB & Bushing Assembly | | ✓ |
| 14 | Gears | | ✓ |
| 15 | PBBB Gaskets | | ✓ |
| 16 | Separation Plate | | |
| 17 | Casing - 2" SAE Ports | | |
| 18 | Head | | |

| ITEM | PART (may not exactly match parts list descriptions) | PART INCLUDED IN: | |
|------|---|-------------------|------------------------------------|
| | | Seal Kit | Complete Rebuild Kit (Recommended) |
| 19 | Section Orings | | ✓ |
| 20 | Driver Shaft | | ✓ |
| 21 | Dowel Pins | | ✓ |
| 22 | Driven Shaft | | ✓ |
| 23 | External Retaining Rings | | ✓ |
| 24 | Dowel Pins | | ✓ |
| 25 | Dowel Pins | | ✓ |
| 26 | Lock Washers | | ✓ |
| 27 | Cap Screws | | ✓ |
| 28 | Shaft Key | ✓ | ✓ |
| 29 | Head Foot Bracket | | |
| 30 | Cap Screws | | |
| 31 | Flat Washers | | |
| 32 | Eyebolt | | |
| 33 | Flange Assembly | | |
| 34 | Nameplate | | |
| 35 | Drive Screws | | |

- Mechanical seal material and elastomers called out in the standard seal kits (TFE/P- SIC v Carbon).
- TFE/P Elastomers standard for section orings, flange orings, and mechanical seal elastomers
- Use Seal Lubricant in Seal Kit for installing mechanical seal and O-rings.

Reference the Viking Pump TSM referenced below for appropriate torque settings during reassembly.

Important safety information and rebuild instructions are found in the Technical Service Manual.



Download current Technical Service Manual from vikingpump.com:

TSM 1654
GB-410 Series™

Kit Part Numbers by Model:

| Models | Seal Kit | Complete Rebuild Kit (Recommended) |
|-----------------------------|-----------------|------------------------------------|
| GB-41039-G00 / GB-41039-G10 | 3-464-LACT-K517 | 3-464-GB41039-FULL-4 |