

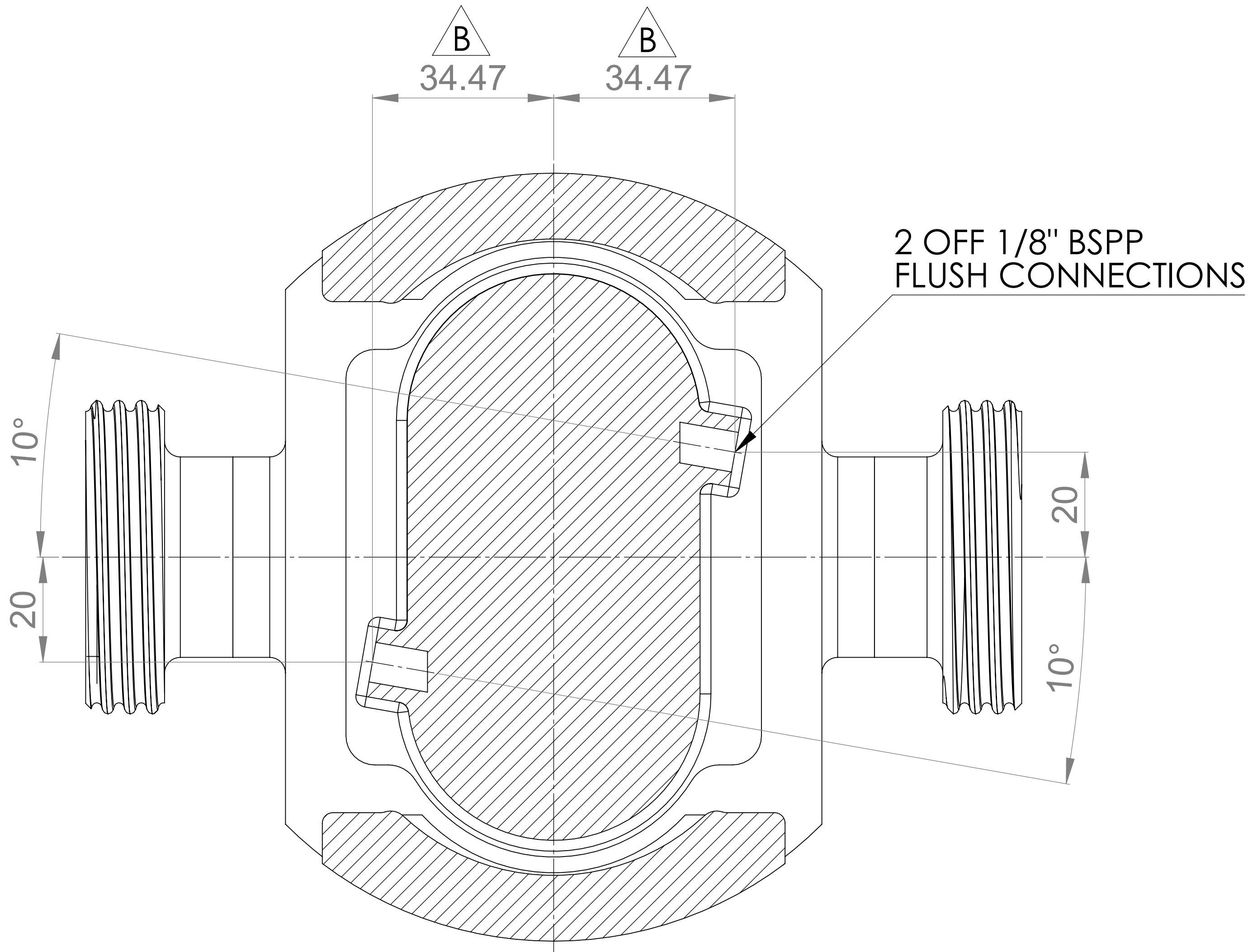
GENERAL ARRANGEMENT DETAILS

PUMP INFORMATION

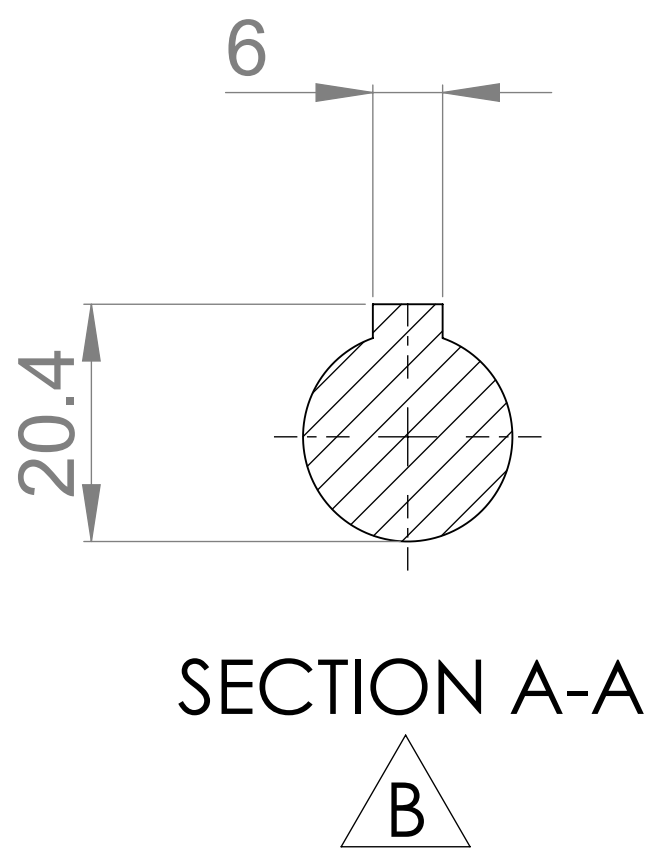
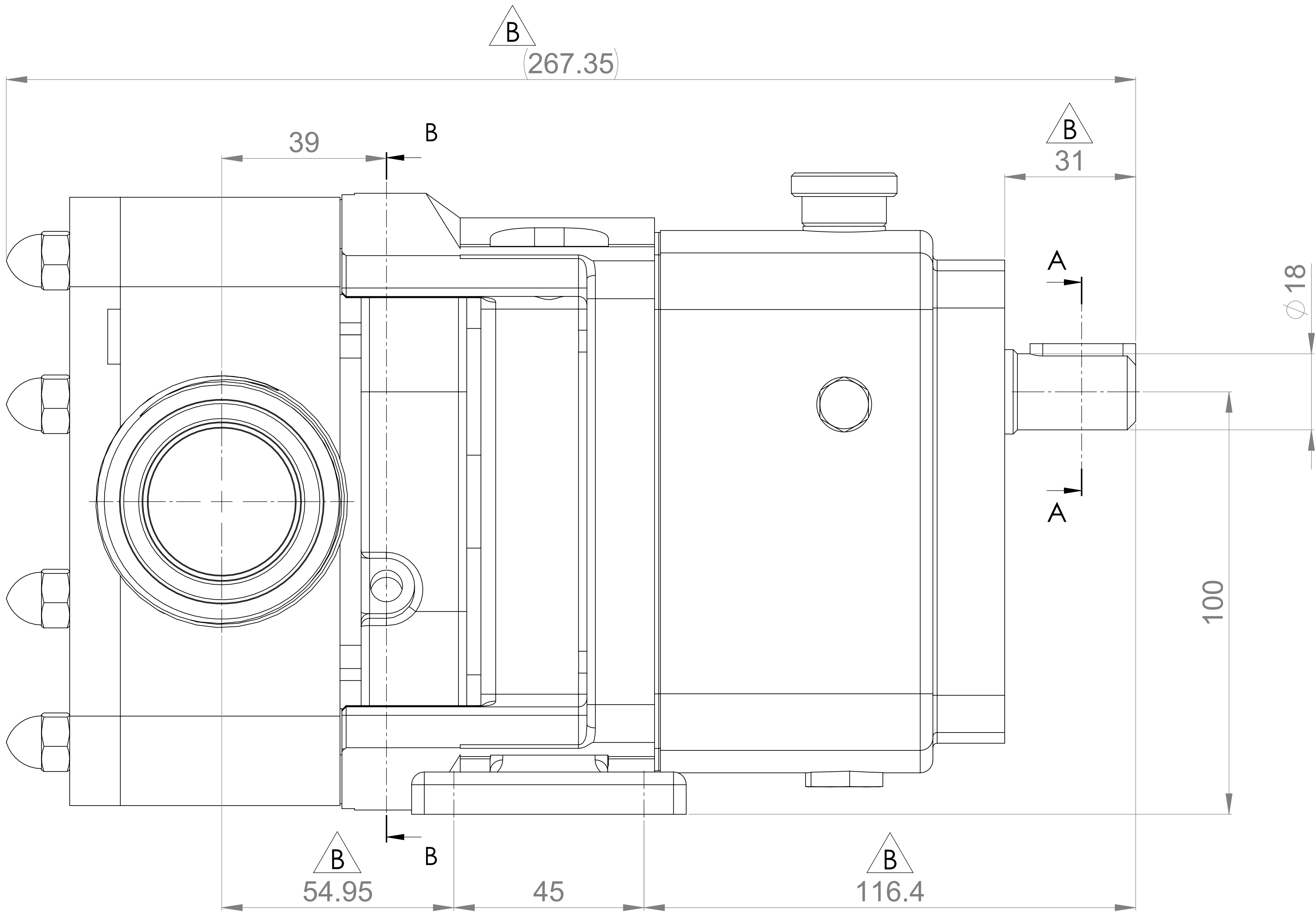
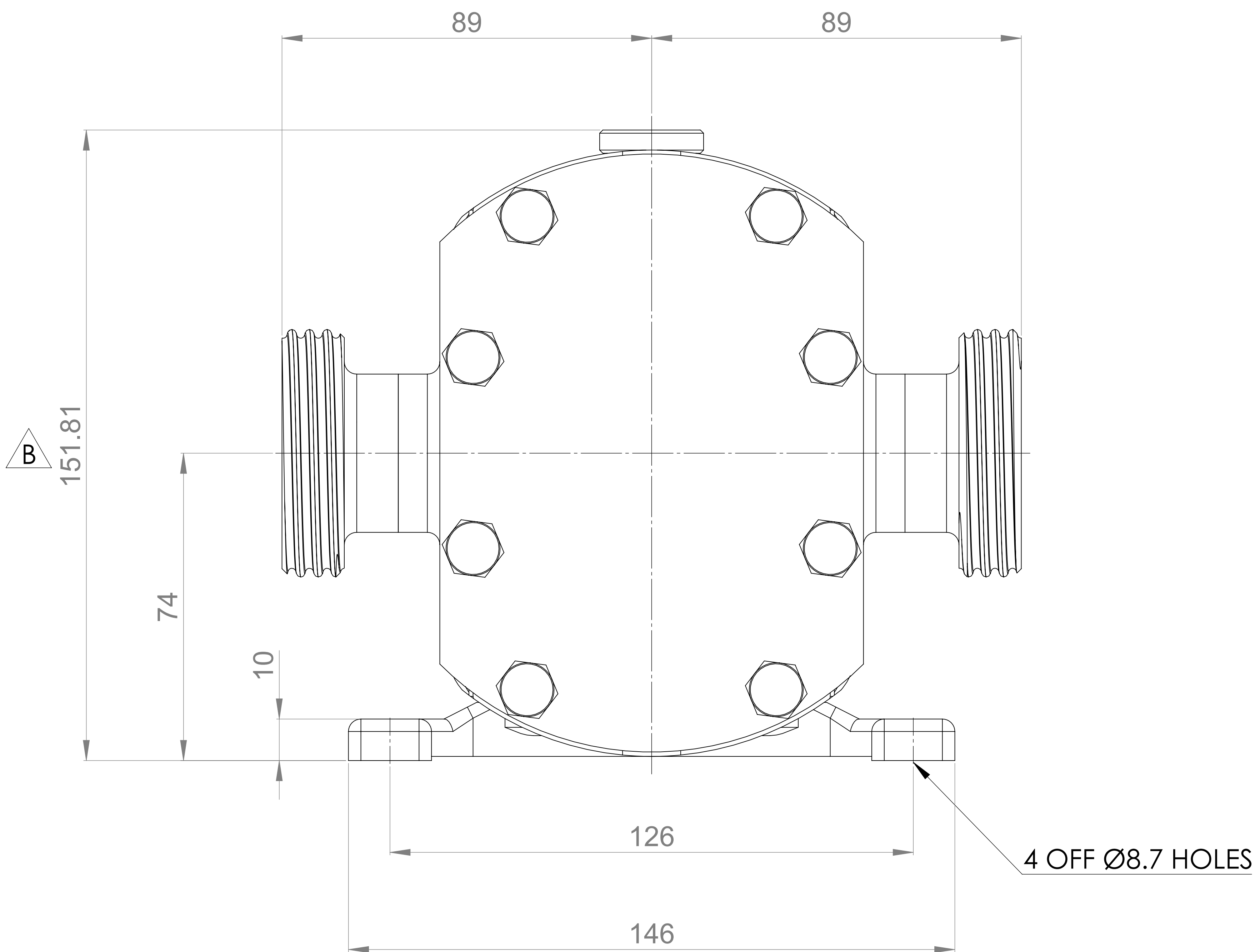
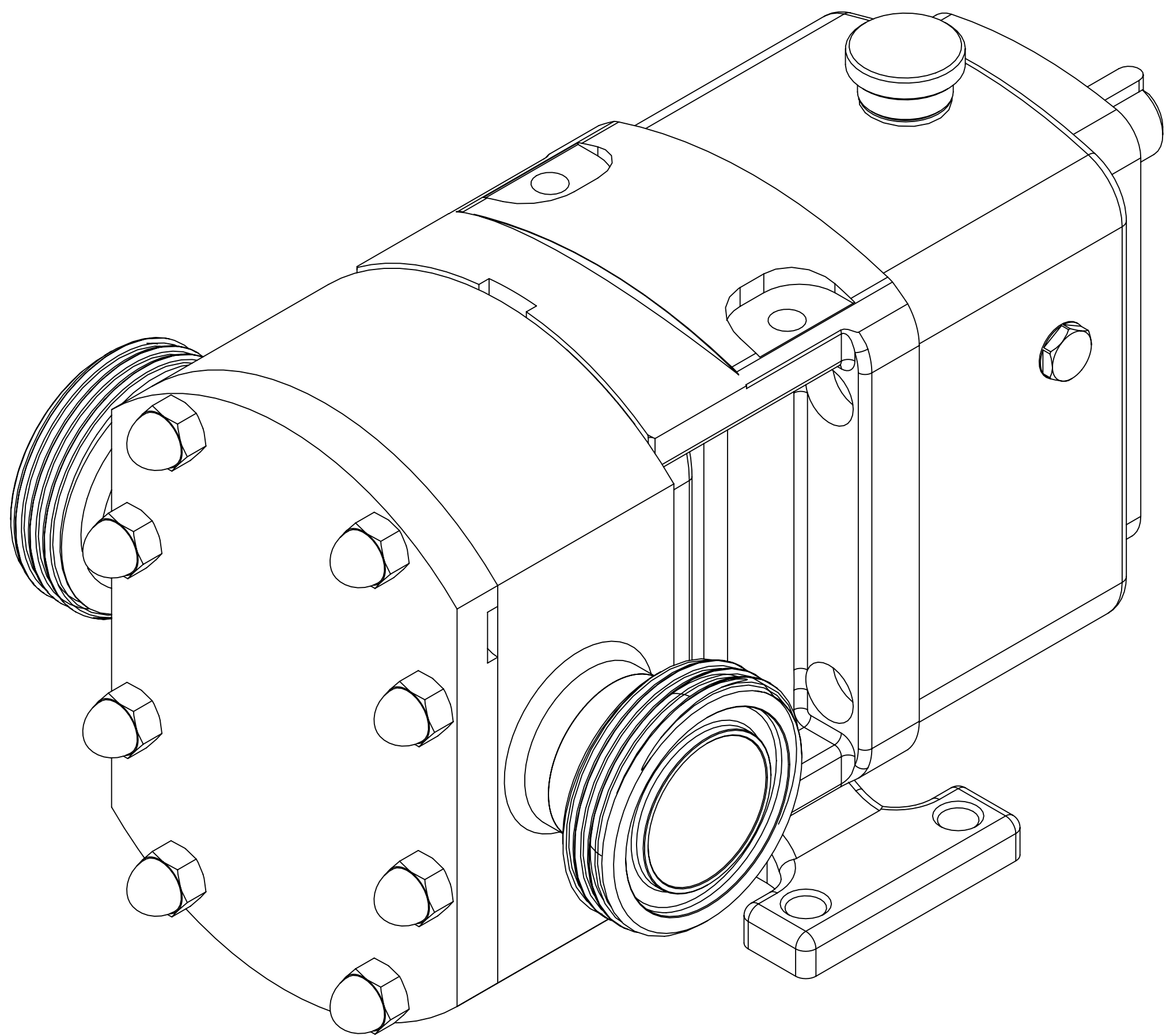
PUMP MODEL	MULTIPUMP MP10/0008/08
LEFT/TOP CONNECTION	1.5" SMS MALE
RIGHT/BOTTOM CONNECTION	1.5" SMS MALE
DRIVE SHAFT POSITION	TOP SHAFT DRIVE
FRONT COVER ADDITIONS	STANDARD
ROTORCASE ADDITIONS	STANDARD
GEARBOX ADDITIONS	STANDARD
PUMP ADDITIONS	FLUSHING

THIS IS NOT A CERTIFIED DRAWING, USE FOR GENERAL
INSTALLATION ONLY

B



SECTION B-B



UPDATED FORMAT AND PRECISION	B	16/10/2024
ISSUED	A	02/04/2020
AMENDMENT	ISSUE	DATE

VIKING PUMP
HYGIENIC

HIGHFIELD INDUSTRIAL ESTATE,
EAST SUSSEX, BN23 6PT
TEL: (+44) 1323 509211

COPYRIGHT:

THIS DRAWING IS THE SOLE
PROPERTY OF
VIKING PUMP HYGIENIC LTD.
IT MUST NOT BE COPIED OR USED
IN PART OR FULL WITHOUT PRIOR
WRITTEN CONSENT.

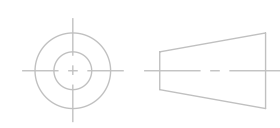
UNLESS OTHERWISE STATED:

ALL DIMENSIONS ± 2.50
ANGLES ± 2.0°

DO NOT SCALE THIS DRAWING
REMOVE BURRS AND SHARP EDGES
DIMENSIONS IN MILLIMETRES

IF IN DOUBT ASK

PROJECTION



DRAWN

DSB

CHECKED

IPJB

TITLE:

GENERAL ARRANGEMENT

DRG. NO:

GA4377