

MODELS: GB-425051-R00-D, GB-425051-R10-D

- NOTES:
1. COUPLING GUARD NOT SHOWN IN TOP VIEW.
 2. ALL DIMENSIONS ARE FOR REFERENCE ONLY.

DATA SHEET

Three Phase Induction Motor - Squirrel Cage



Customer :				
Product line		: W22 NEMA Premium Efficiency Three-Phase		Product code : 11355339
				Catalog # : 10012ET3E444T-W22
Frame : 444/5T Output : 100 HP (75 kW) Poles : 6 Frequency : 60 Hz Rated voltage : 208-230/460 V Rated current : 268-242/121 A L. R. Amperes : 1659-1500/750 A LRC : 6.2x(Code G) No load current : 86.2-100/50.0 A Rated speed : 1185 rpm Slip : 1.25 % Rated torque : 437 ft.lb Locked rotor torque : 220 % Breakdown torque : 260 % Insulation class : F Service factor : 1.25 Moment of inertia (J) : 87.3 sq.ft.lb Design : B		Locked rotor time : 36s (cold) 20s (hot) Temperature rise : 80 K Duty cycle : Cont.(S1) Ambient temperature : -20°C to +40°C Altitude : 1000 m.a.s.l. Protection degree : IP55 Cooling method : IC411 - TEFC Mounting : F-1 Rotation ¹ : Both (CW and CCW) Noise level ² : 69.0 dB(A) Starting method : Direct On Line Approx. weight ³ : 1685 lb		
Output	50%	75%	100%	Foundation loads
Efficiency (%)	94.5	95.0	95.0	Max. traction : 2711 lb
Power Factor	0.68	0.78	0.82	Max. compression : 4395 lb
		<u>Drive end</u>	<u>Non drive end</u>	
Bearing type	:	6319 C3	6316 C3	
Sealing	:	WSeal	WSeal	
Lubrication interval	:	13000 h	16000 h	
Lubricant amount	:	45 g	34 g	
Lubricant type	:	Mobil Polyrex EM		
Notes				
This revision replaces and cancel the previous one, which must be eliminated. (1) Looking the motor from the shaft end. (2) Measured at 1m and with tolerance of +3dB(A). (3) Approximate weight subject to changes after manufacturing process. (4) At 100% of full load.			These are average values based on tests with sinusoidal power supply, subject to the tolerances stipulated in NEMA MG-1.	
Rev.	Changes Summary		Performed	Checked
Performed by				
Checked by			Page	Revision
Date	22/04/2019		1 / 6	

TORQUE AND CURRENT VS SPEED CURVE

Three Phase Induction Motor - Squirrel Cage

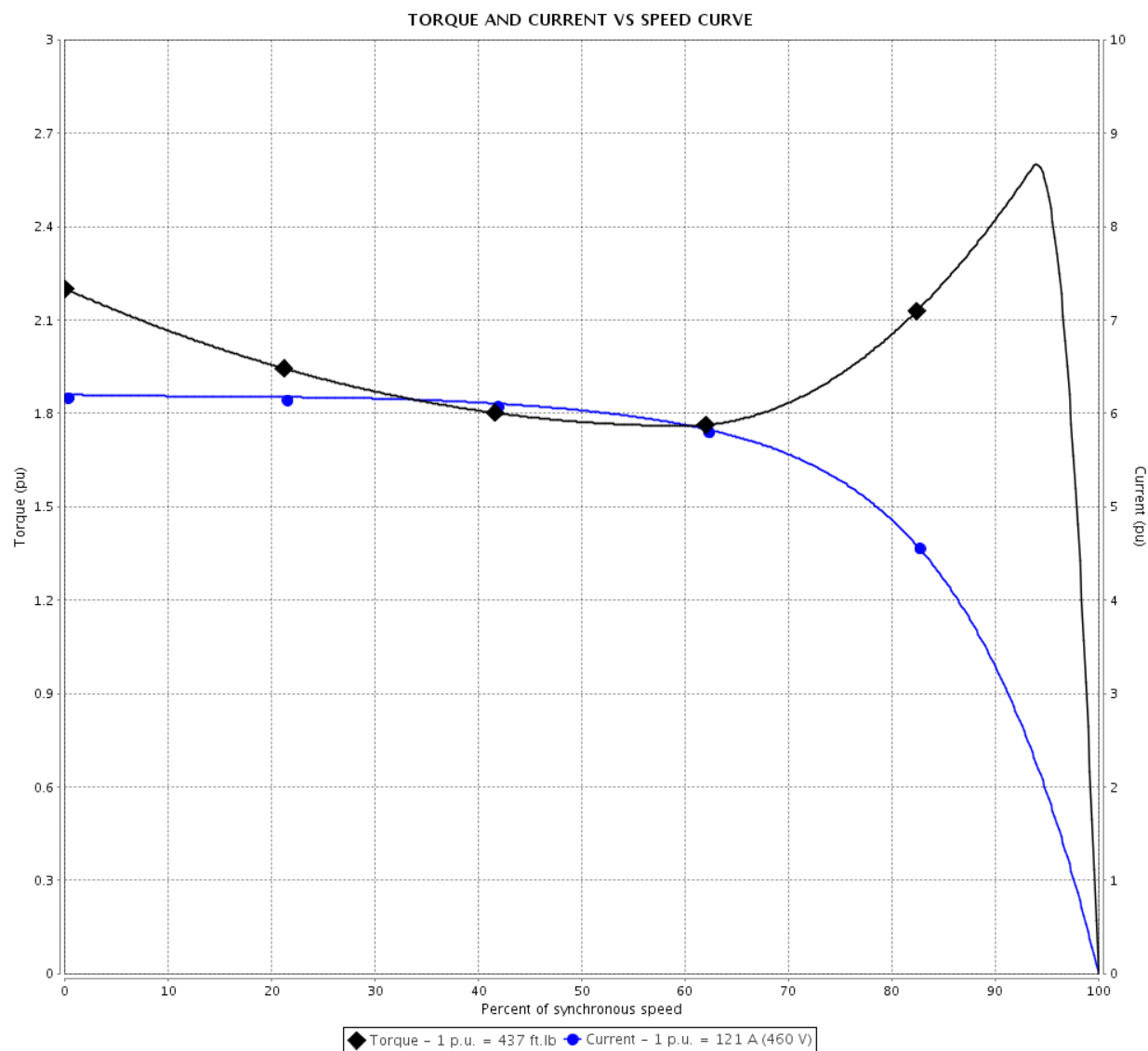


Customer :

Product line : W22 NEMA Premium Efficiency
Three-Phase

Product code : 11355339

Catalog # : 10012ET3E444T-W22



Performance : 208-230/460 V 60 Hz 6P

Rated current : 268-242/121 A
LRC : 6.2
Rated torque : 437 ft.lb
Locked rotor torque : 220 %
Breakdown torque : 260 %
Rated speed : 1185 rpm

Moment of inertia (J) : 87.3 sq.ft.lb
Duty cycle : Cont.(S1)
Insulation class : F
Service factor : 1.25
Temperature rise : 80 K
Design : B

Locked rotor time : 36s (cold) 20s (hot)

Rev.	Changes Summary	Performed	Checked	Date
Performed by			Page	Revision
Checked by			2 / 6	
Date				

LOAD PERFORMANCE CURVE

Three Phase Induction Motor - Squirrel Cage

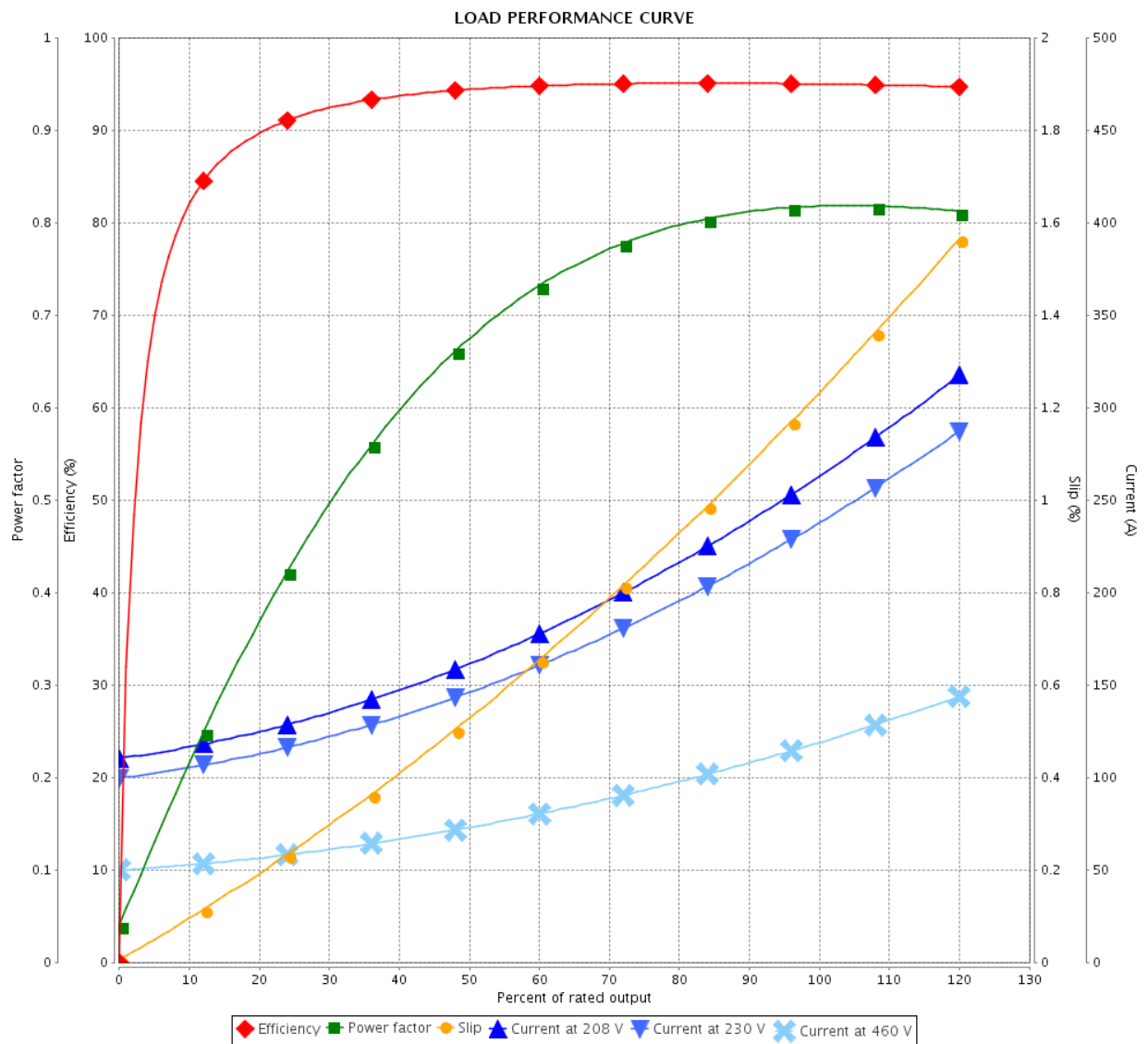


Customer :

Product line : W22 NEMA Premium Efficiency
Three-Phase

Product code : 11355339

Catalog # : 10012ET3E444T-W22



Performance : 208-230/460 V 60 Hz 6P

Rated current : 268-242/121 A
LRC : 6.2
Rated torque : 437 ft.lb
Locked rotor torque : 220 %
Breakdown torque : 260 %
Rated speed : 1185 rpm

Moment of inertia (J) : 87.3 sq.ft.lb
Duty cycle : Cont.(S1)
Insulation class : F
Service factor : 1.25
Temperature rise : 80 K
Design : B

Rev.	Changes Summary	Performed	Checked	Date
Performed by		Page 3 / 6Revision		
Checked by				
Date	22/04/2019			

THERMAL LIMIT CURVE

Three Phase Induction Motor - Squirrel Cage



Customer

:

Product line

: W22 NEMA Premium Efficiency
Three-Phase

Product code :

11355339

Catalog # :

10012ET3E444T-W22

Performance : 208-230/460 V 60 Hz 6P

Rated current : 268-242/121 A
LRC : 6.2
Rated torque : 437 ft.lb
Locked rotor torque : 220 %
Breakdown torque : 260 %
Rated speed : 1185 rpm

Moment of inertia (J) : 87.3 sq.ft.lb
Duty cycle : Cont.(S1)
Insulation class : F
Service factor : 1.25
Temperature rise : 80 K
Design : B

Heating constant

Cooling constant

Rev.

Changes Summary

Performed

Checked

Date

Performed by

Checked by

Date

22/04/2019

Page

4 / 6

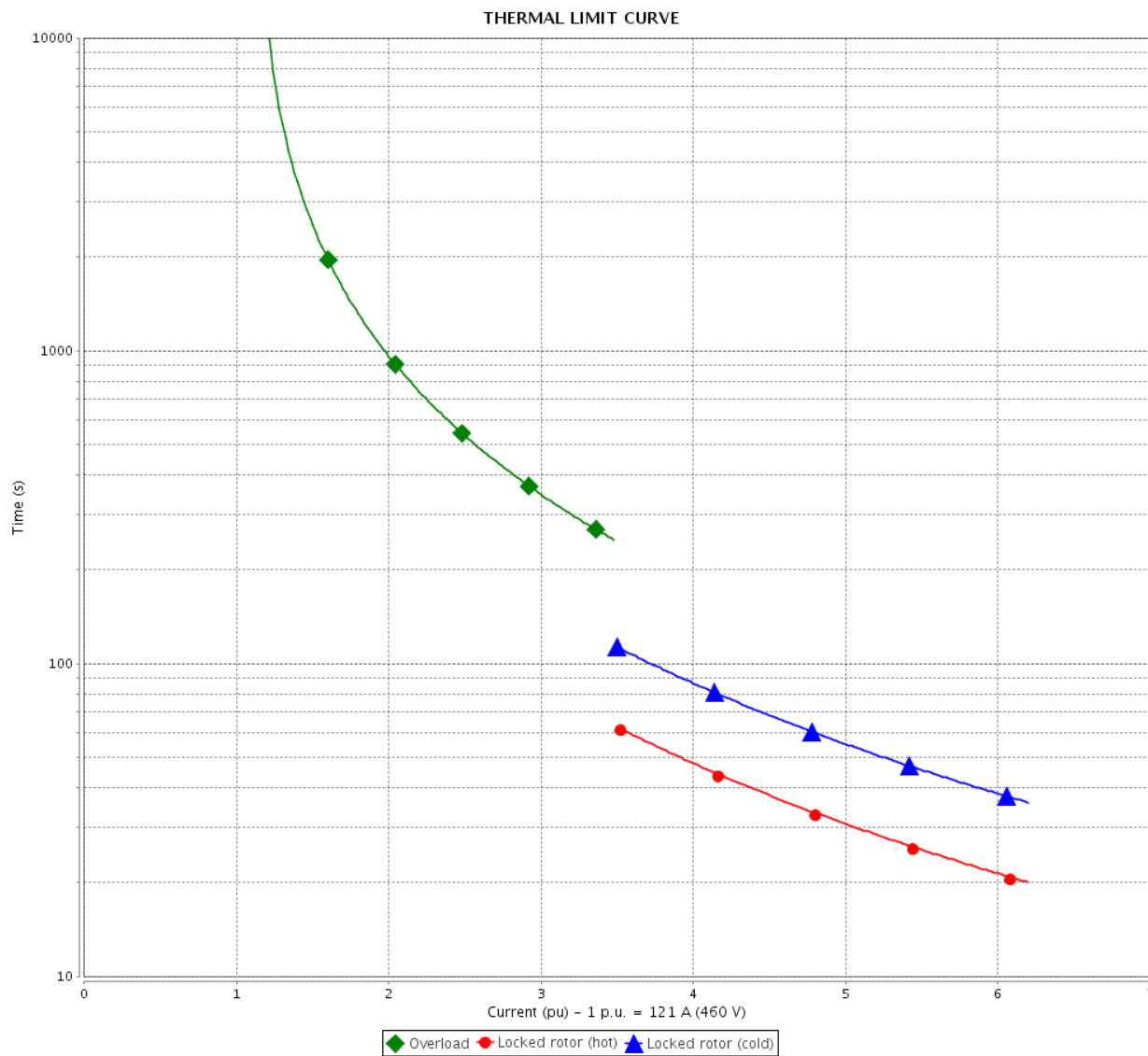
Revision

THERMAL LIMIT CURVE

Three Phase Induction Motor - Squirrel Cage



Customer : _____



Rev.	Changes Summary		Performed	Checked	Date
Performed by				Page 5 / 6	Revision
Checked by					
Date	22/04/2019				

VFD OPERATION CURVE

Three Phase Induction Motor - Squirrel Cage

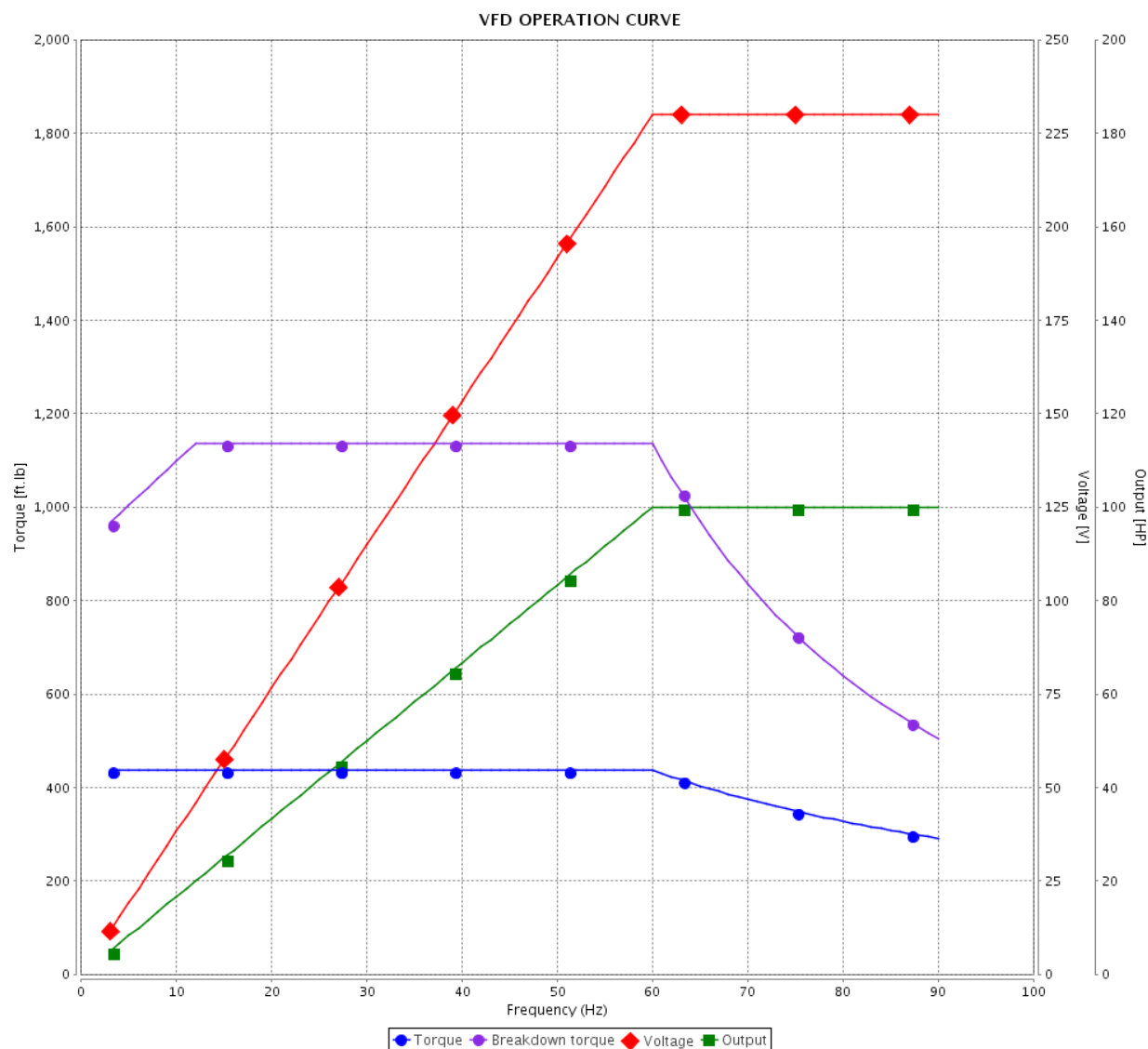


Customer :

Product line : W22 NEMA Premium Efficiency
Three-Phase

Product code : 11355339

Catalog # : 10012ET3E444T-W22

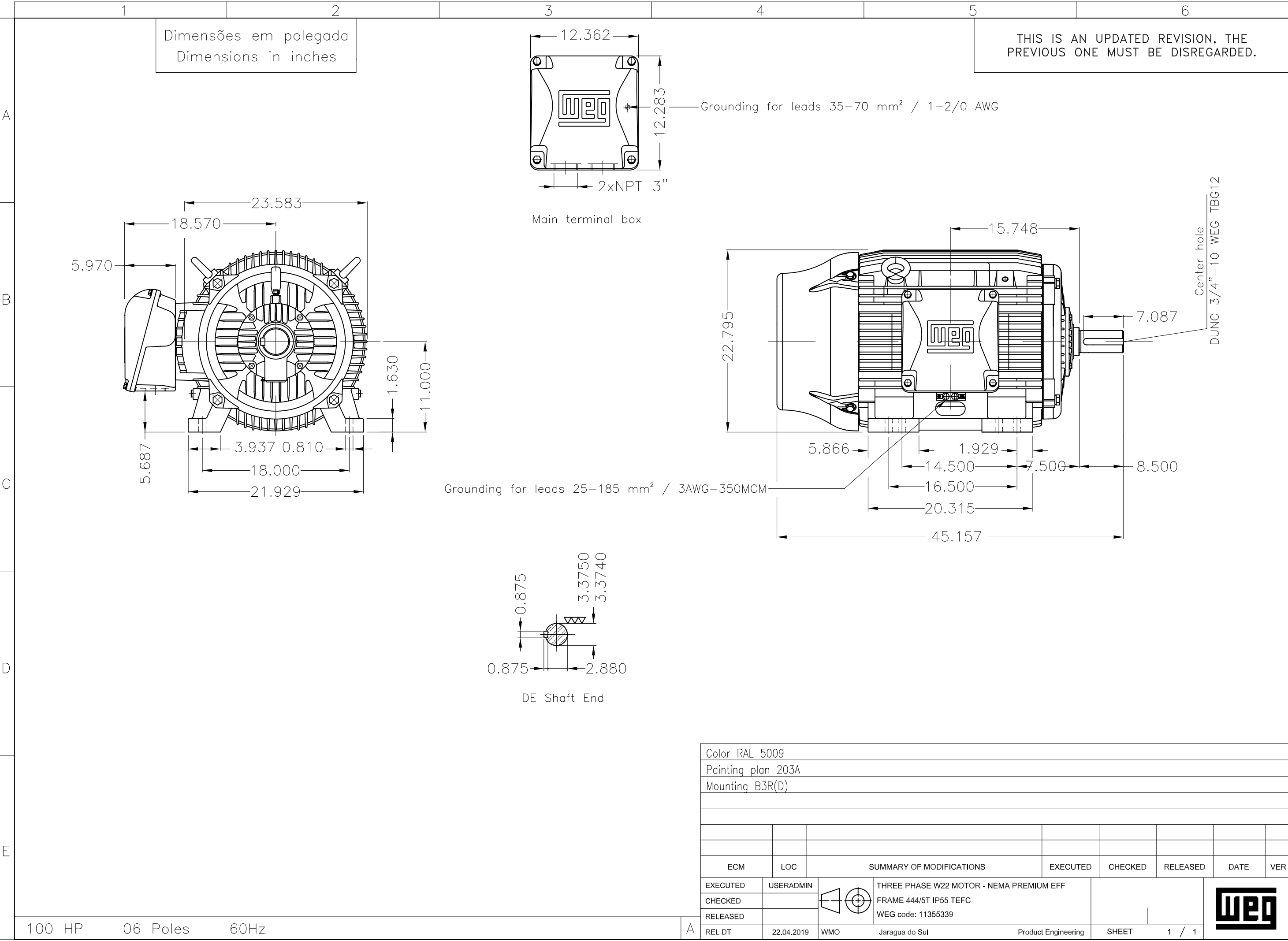


Performance : 208-230/460 V 60 Hz 6P

Rated current : 268-242/121 A
LRC : 6.2
Rated torque : 437 ft.lb
Locked rotor torque : 220 %
Breakdown torque : 260 %
Rated speed : 1185 rpm

Moment of inertia (J) : 87.3 sq.ft.lb
Duty cycle : Cont.(S1)
Insulation class : F
Service factor : 1.25
Temperature rise : 80 K
Design : B

Rev.	Changes Summary		Performed	Checked	Date
Performed by				Page 6 / 6	Revision
Checked by					
Date	22/04/2019				



MODEL 10012ET3E444T-W22
MADE IN MEXICO
11355339

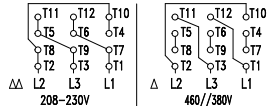


FOR SAFE AREA
MOD.TE1BFOXON

For 60Hz: Class I, Div 2, Gr. A, B, C and D - T3
Class I, Zone 2, IIC - T3
Class II, Div 2, Gr. F and G - T3C
For 60Hz use on PWM, Gr. A, B, C, D and F,
VT 1000:1, CT 20:1, 1.0SF, T3A



PH 3	FR 444/5T	HP(kW) 100.0(75.0)	Hz 60
V 230/460	A 242/121	RPM 1185	DES B
NEMA NOM EFF 95.0 %	INS. CL. F Δ T 80 K	IP55	
ENCL TEFC	DUTY CONT.	AMB. 40°C	
CODE G	PF 0.82	SF 1.25	SFA 303/151
USABLE @208V 268 A	SF 1.10	SFA 295	
100HP 75kW 50Hz 380V 145A 980RPM SF1.00 EFF 93.6% (IE1)			



→ 6319-C3 (45g) MOBIL POLYREX EM
→ 6316-C3 (34g) 13000 h

ALT 1000 m.a.s.l. 1676 Lbs