



# DATA SHEET

## Three Phase Induction Motor - Squirrel Cage



Customer :

Product line : W22 NEMA Premium Efficiency Three-Phase Product code : 11355771  
Catalog # : 12512ET3E445T-W22

Frame	: 444/5T	Locked rotor time	: 34s (cold) 19s (hot)
Output	: 125 HP	Temperature rise	: 80 K
Poles	: 6	Duty cycle	: Cont.(S1)
Frequency	: 60 Hz	Ambient temperature	: -20°C to +40°C
Rated voltage	: 208-230/460 V	Altitude	: 1000 m.a.s.l.
Rated current	: 316-286/143 A	Protection degree	: IP55
L. R. Amperes	: 2024-1830/915 A	Cooling method	: IC411 - TEFC
LRC	: 6.4x(Code G)	Mounting	: F-1
No load current	: 96.6-112/56.0 A	Rotation <sup>1</sup>	: Both (CW and CCW)
Rated speed	: 1185 rpm	Noise level <sup>2</sup>	: 69.0 dB(A)
Slip	: 1.25 %	Starting method	: Direct On Line
Rated torque	: 547 ft.lb	Approx. weight <sup>3</sup>	: 1819 lb
Locked rotor torque	: 210 %		
Breakdown torque	: 240 %		
Insulation class	: F		
Service factor	: 1.15		
Moment of inertia (J)	: 104 sq.ft.lb		
Design	: B		

Output	25%	50%	75%	100%	Foundation loads	
Efficiency (%)	95.2	95.0	95.4	95.0	Max. traction	: 3177 lb
Power Factor	0.45	0.70	0.79	0.83	Max. compression	: 4995 lb

		Drive end	Non drive end
Bearing type	:	6319 C3	6316 C3
Sealing	:	WSeal	WSeal
Lubrication interval	:	13000 h	16000 h
Lubricant amount	:	45 g	34 g
Lubricant type	:	Mobil Polyrex EM	

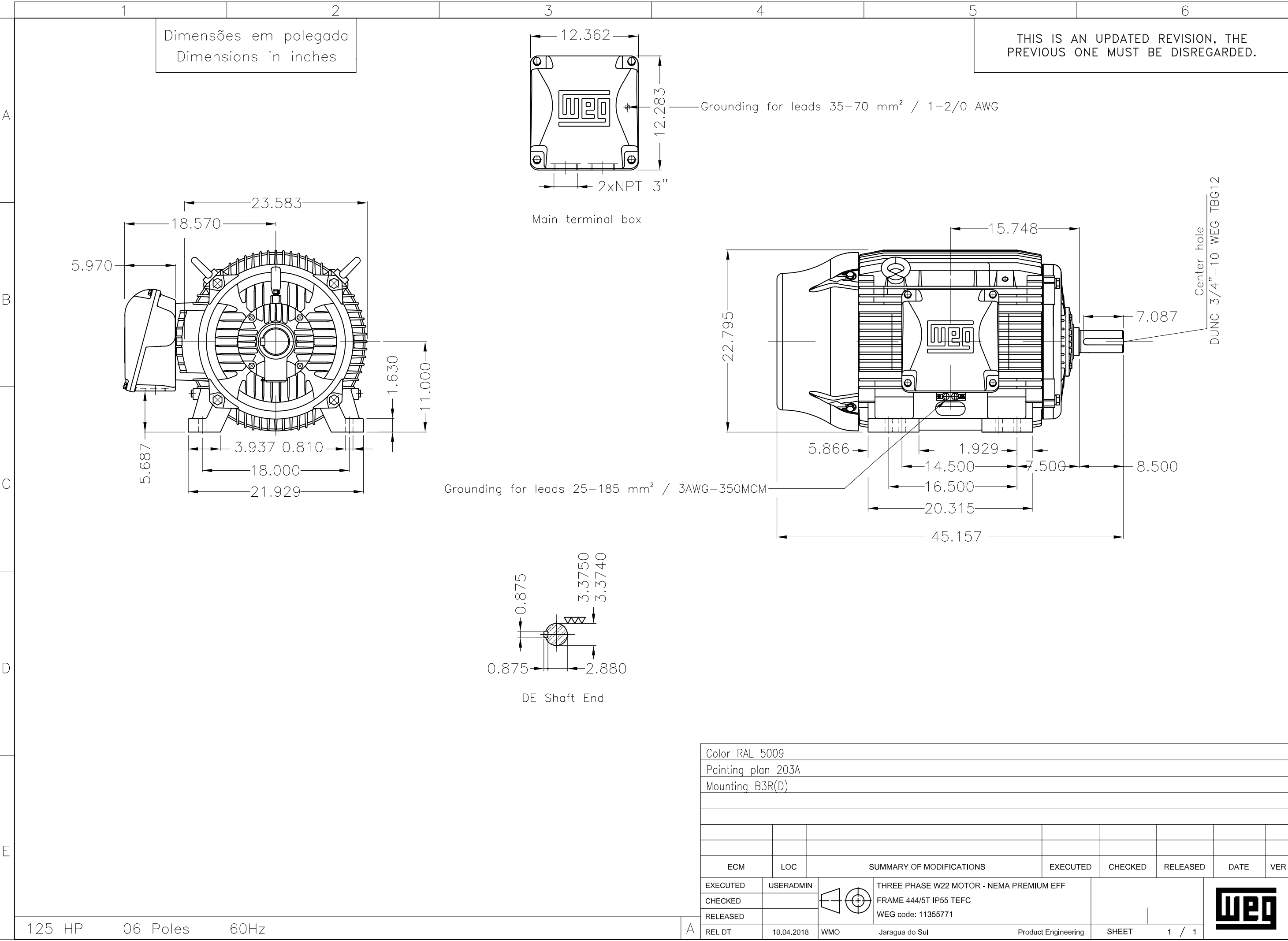
### Notes

This revision replaces and cancel the previous one, which must be eliminated.

- (1) Looking the motor from the shaft end.
- (2) Measured at 1m and with tolerance of +3dB(A).
- (3) Approximate weight subject to changes after manufacturing process.
- (4) At 100% of full load.

These are average values based on tests with sinusoidal power supply, subject to the tolerances stipulated in NEMA MG-1.

Rev.	Changes Summary	Performed	Checked	Date
Performed by		Page Revision 1 / 1		
Checked by				
Date	10/04/2018			



# LOAD PERFORMANCE CURVE

## Three Phase Induction Motor - Squirrel Cage

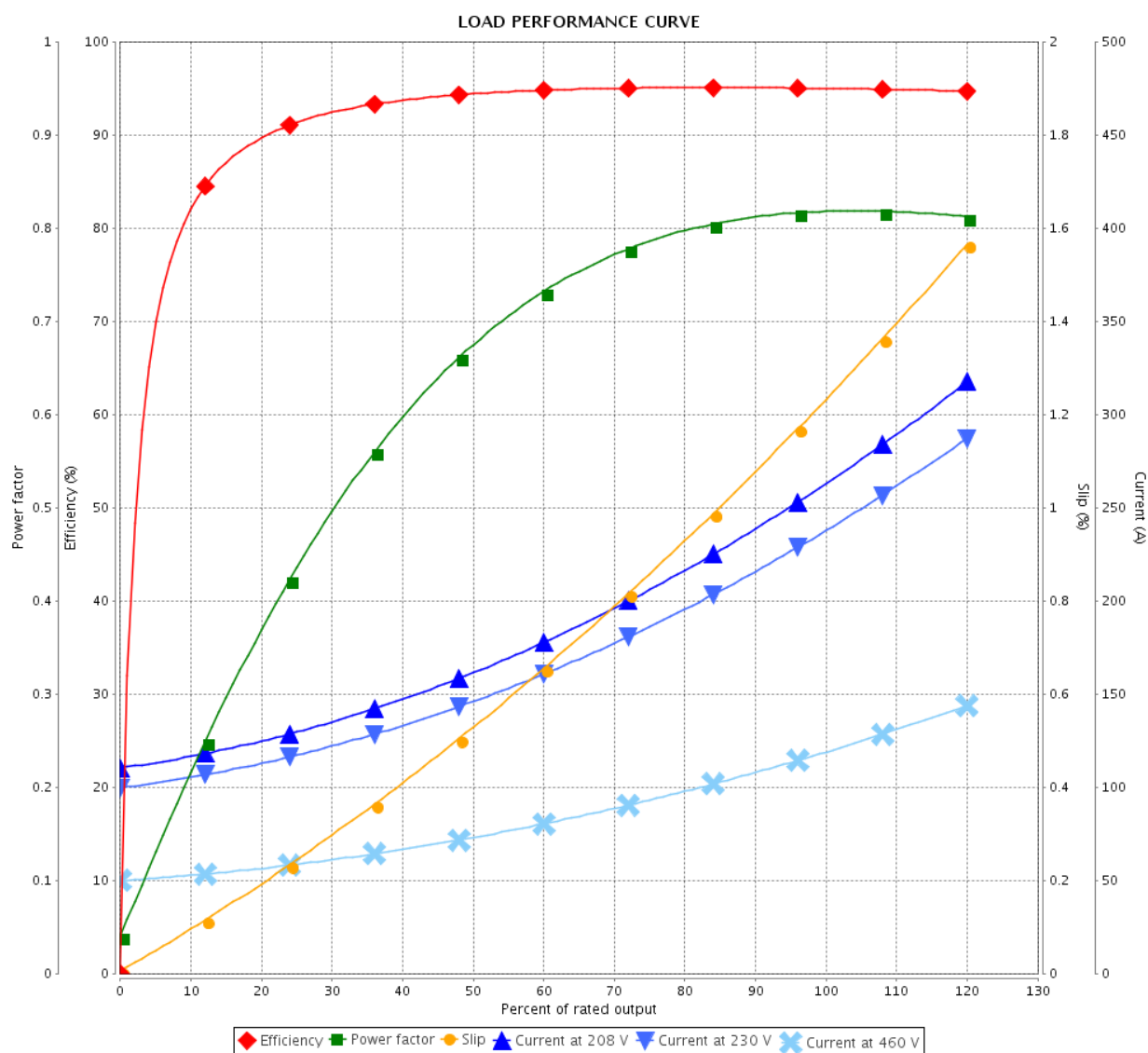


Customer :

Product line : W22 NEMA Premium Efficiency  
Three-Phase

Product code : 11355339

Catalog # : 10012ET3E444T-W22



Performance : 208-230/460 V 60 Hz 6P

Rated current : 268-242/121 A  
LRC : 6.2  
Rated torque : 437 ft.lb  
Locked rotor torque : 220 %  
Breakdown torque : 260 %  
Rated speed : 1185 rpm

Moment of inertia (J) : 87.3 sq.ft.lb  
Duty cycle : Cont.(S1)  
Insulation class : F  
Service factor : 1.25  
Temperature rise : 80 K  
Design : B

Rev.	Changes Summary	Performed	Checked	Date
Performed by		Page 3 / 6Revision		
Checked by				
Date	22/04/2019			

# THERMAL LIMIT CURVE

## Three Phase Induction Motor - Squirrel Cage



Customer

:

Product line

: W22 NEMA Premium Efficiency  
Three-Phase

Product code :

11355339

Catalog # :

10012ET3E444T-W22

Performance : 208-230/460 V 60 Hz 6P

Rated current : 268-242/121 A  
LRC : 6.2  
Rated torque : 437 ft.lb  
Locked rotor torque : 220 %  
Breakdown torque : 260 %  
Rated speed : 1185 rpm

Moment of inertia (J) : 87.3 sq.ft.lb  
Duty cycle : Cont.(S1)  
Insulation class : F  
Service factor : 1.25  
Temperature rise : 80 K  
Design : B

Heating constant

Cooling constant

Rev.

Changes Summary

Performed

Checked

Date

Performed by

Checked by

Date

22/04/2019

Page

4 / 6

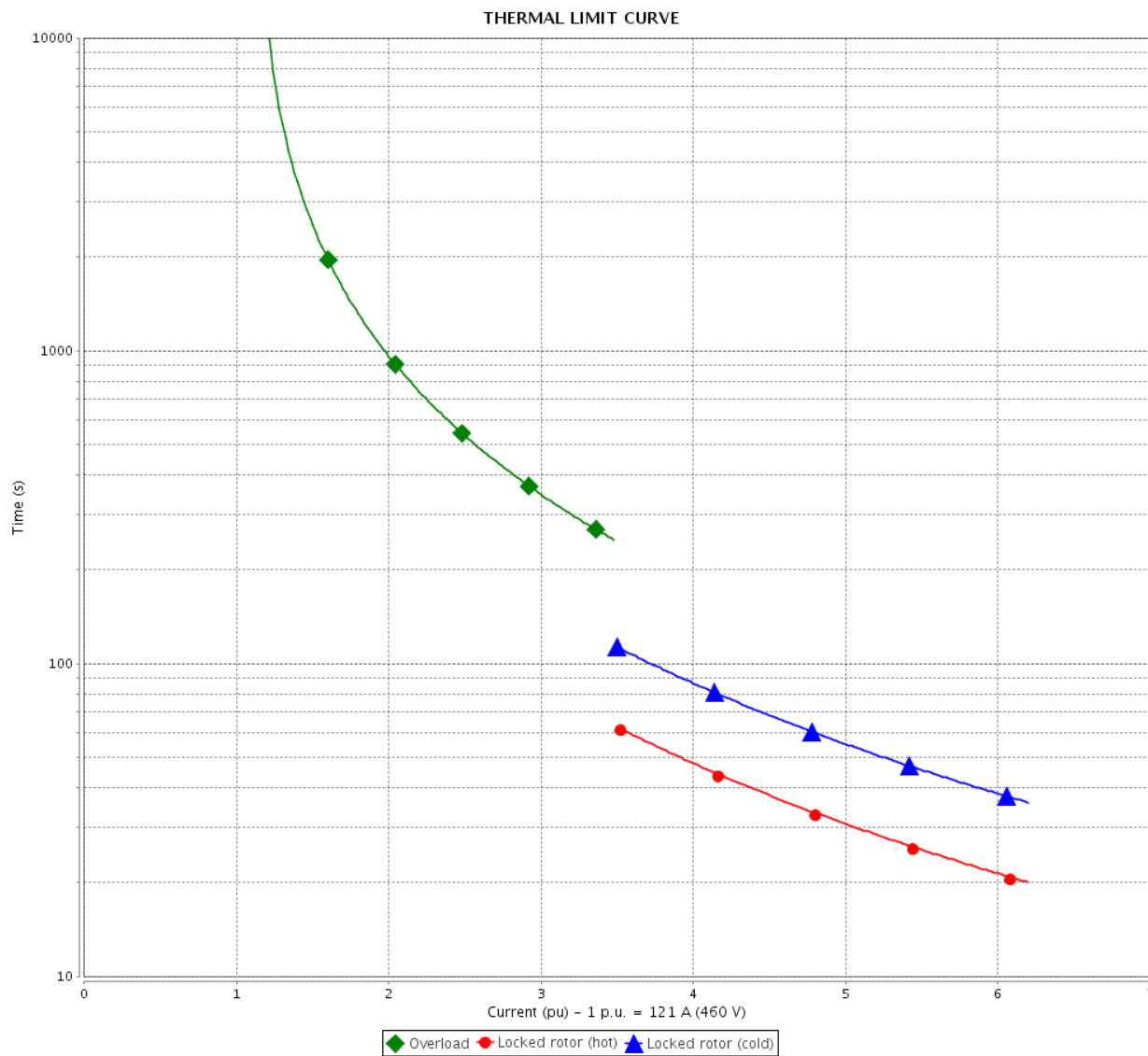
Revision

# THERMAL LIMIT CURVE

## Three Phase Induction Motor - Squirrel Cage



Customer : \_\_\_\_\_



Rev.	Changes Summary		Performed	Checked	Date
Performed by				Page 5 / 6	Revision
Checked by					
Date	22/04/2019				

# VFD OPERATION CURVE

Three Phase Induction Motor - Squirrel Cage

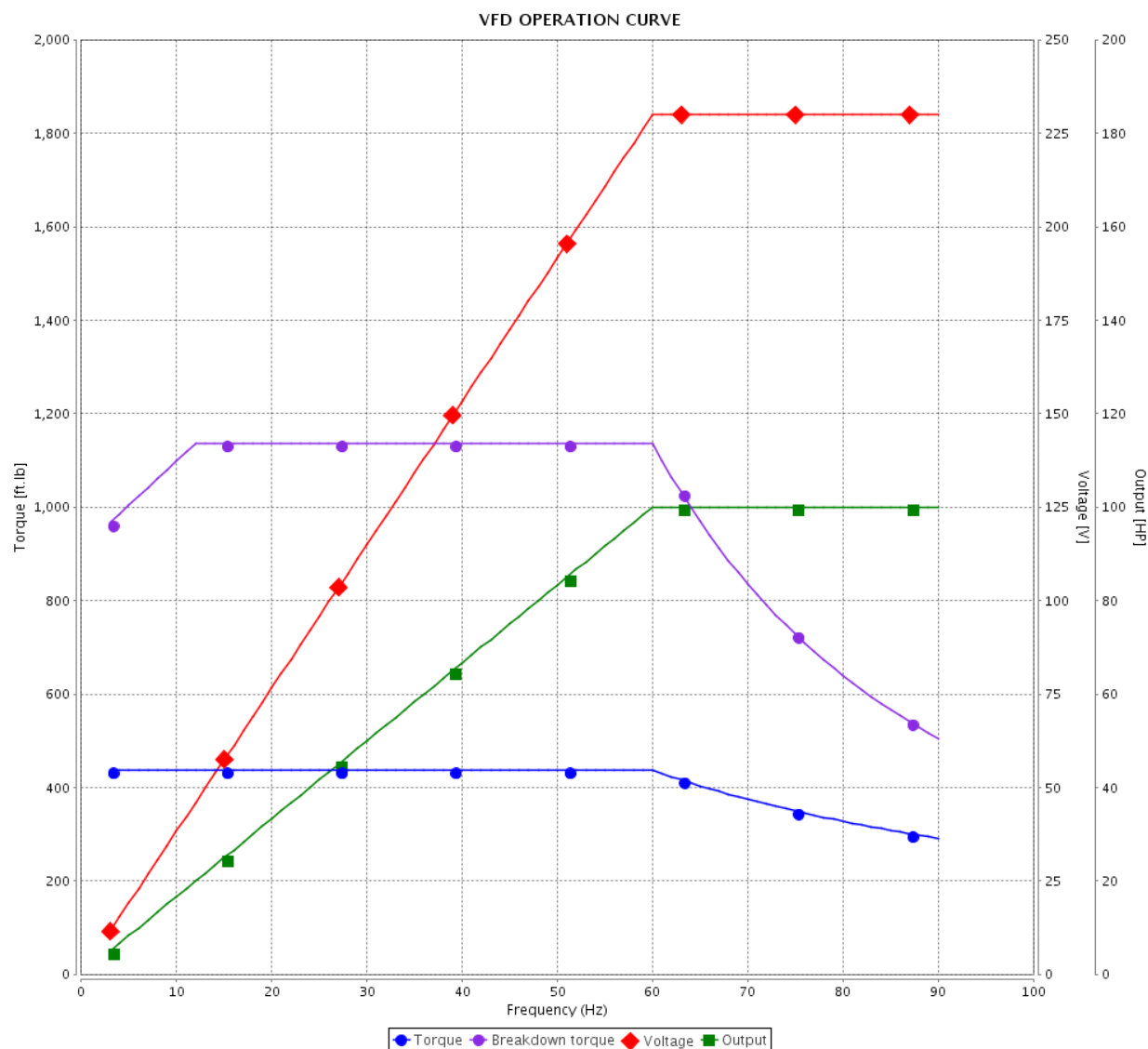


Customer :

Product line : W22 NEMA Premium Efficiency  
Three-Phase

Product code : 11355339

Catalog # : 10012ET3E444T-W22

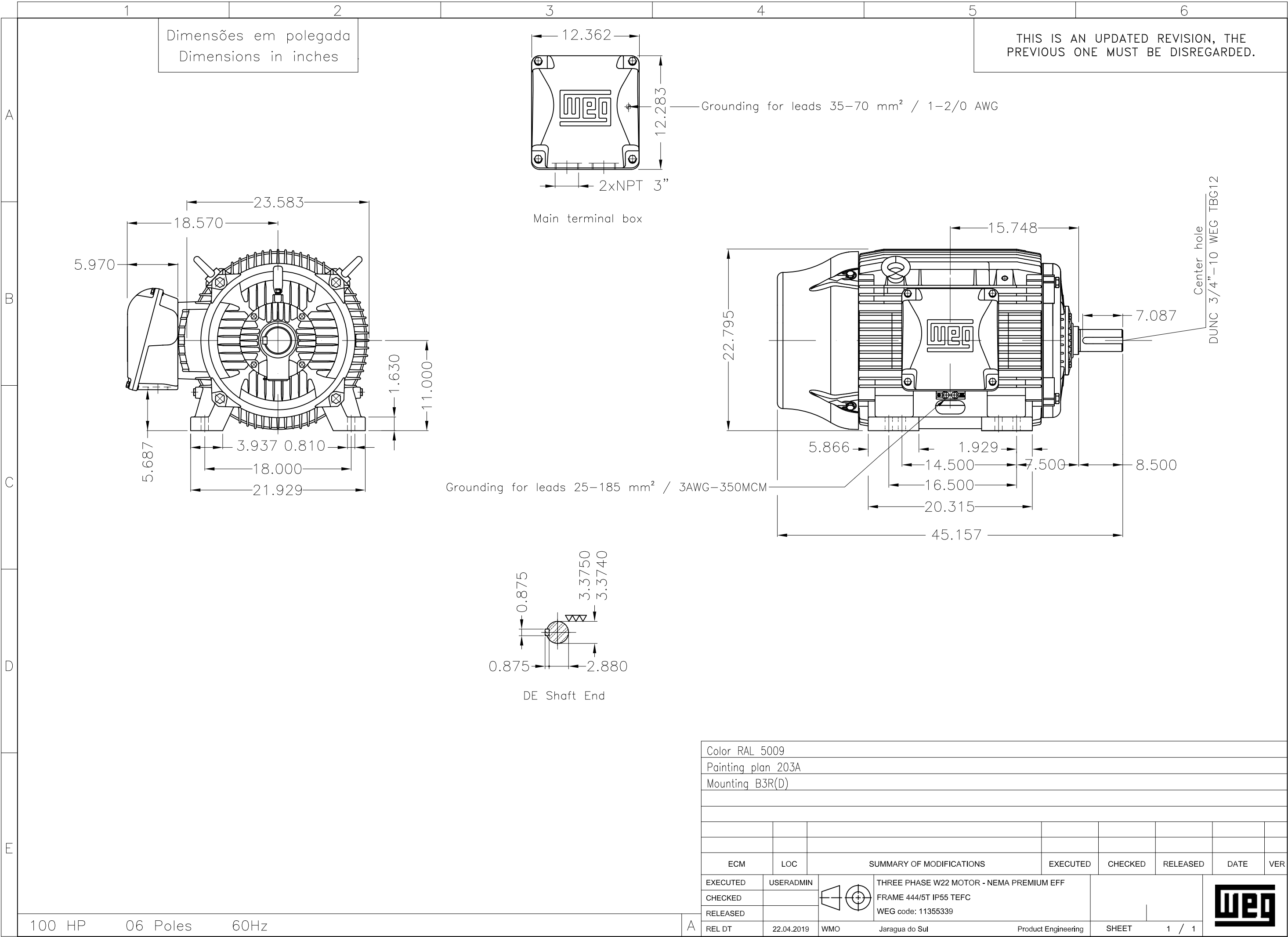


Performance : 208-230/460 V 60 Hz 6P

Rated current : 268-242/121 A  
LRC : 6.2  
Rated torque : 437 ft.lb  
Locked rotor torque : 220 %  
Breakdown torque : 260 %  
Rated speed : 1185 rpm

Moment of inertia (J) : 87.3 sq.ft.lb  
Duty cycle : Cont.(S1)  
Insulation class : F  
Service factor : 1.25  
Temperature rise : 80 K  
Design : B

Rev.	Changes Summary	Performed	Checked	Date
Performed by				Page 6 / 6
Checked by				
Date				
	22/04/2019			Revision





MODEL 10012ET3E444T-W22

MADE IN MEXICO

11355339


**W22 NEMA**  
**CC029A Premium**
*Inverter Duty Motor  
Severe Duty*

**3PT9  
LISTED**

 FOR SAFE AREA  
 MOD.TE1BFOXON

**C US**  
 Energy Verified

For 60Hz: Class I, Div 2, Gr. A, B, C and D - T3

Class I, Zone 2, IIC - T3

Class II, Div 2, Gr. F and G - T3C

 For 60Hz use on PWM, Gr. A, B, C, D and F,  
 VT 1000:1, CT 20:1, 1.0SF, T3A

PH 3 FR 444/5T HP(kW) 100.0(75.0) Hz 60

V 230/460 A 242/121 RPM 1185 DES B

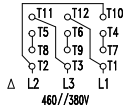
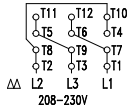
 NEMA NOM EFF 95.0 % INS. CL. F  $\Delta$ T 80 K IP55

ENCL TEFC DUTY CONT. AMB. 40°C

CODE G PF 0.82 SF 1.25 SFA 303/151

USABLE @208V 268 A SF 1.10 SFA 295

100HP 75kW 50Hz 380V 145A 980RPM SF1.00 EFF 93.6% (IE1)



→ 6319-C3 (45g)

→ 6316-C3 (34g)

MOBIL POLYREX EM

13000 h

ALT 1000 m.a.s.l. 1676 Lbs