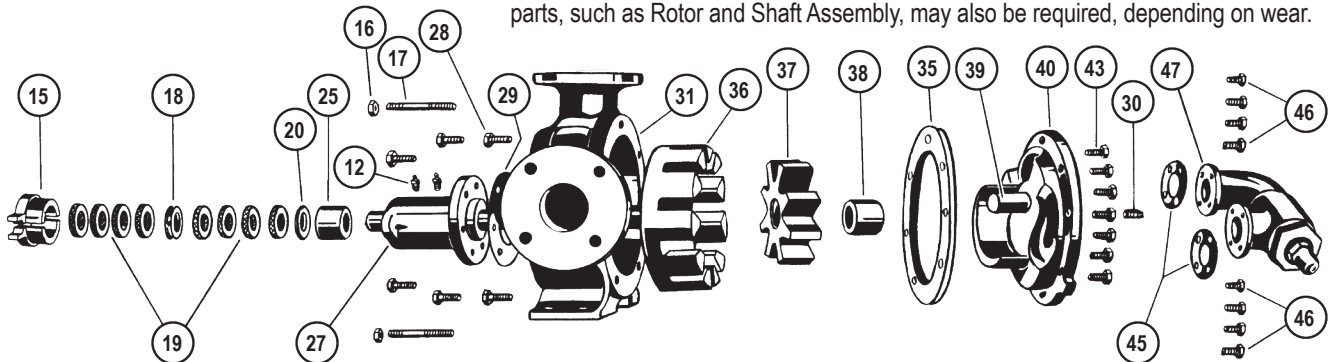


Exploded Diagram for Series 32 (packed), Size LL

NOTE: Kit may not apply to all models of these pumps. Contact your Viking Pump distributor with pump serial number for correct kit part numbers for that pump. Both a Seal Kit and a Rebuild Kit are needed to completely rebuild the pump. Additional non-kit parts, such as Rotor and Shaft Assembly, may also be required, depending on wear.



ITEM	PART (may not exactly match parts list descriptions)	PART INCLUDED IN:	
		32 SERIES SEAL KIT	REBUILD KIT
15	Two-Piece Packing Gland	✓	
19	Packing Rings	✓	
18	Lantern Ring	✓	
20	Packing Retainer Washer	✓	
25	Bushing for Rotor Bearing Sleeve		✓
27	Rotor Bearing Sleeve and Bushing Assembly		
28	Capscrews for Rotor Bearing Sleeve		✓
29	Gasket for Rotor Bearing Sleeve	✓	
16	Packing Gland Nuts	✓	
17	Packing Gland Studs	✓	
31	Casing		
12	Grease Fitting		
36	Rotor and Shaft Assembly		
37	Idler & Bushing Assembly		✓
38	Idler Bushing (included in Idler & Bushing Assy, 37)		
35	Head Gasket Set	✓	
39	Idler Pin (Included in Head & Idler Pin Assy, 40)		
40	Head and Idler Pin Assembly		✓
43	Capscrews for Head		✓
30	Pipe Plug		
45	Relief Valve Gasket	✓	
47	Relief Valve (or cover plates on non-RV pumps)		
46	Capscrews for Valve		✓

Use Lubricant in Seal Kits for installing rotor/shaft.

Important safety information and rebuild instructions are found in the Technical Service Manual.

Download current Technical Service Manuals from www.vikingpump.com:

TSM 000 - Installation, Startup, Troubleshooting,
Preventative Maintenance, Do's & Don'ts

TSM 312 - General Purpose Pumps, Series 32 and 432, Sizes G-N