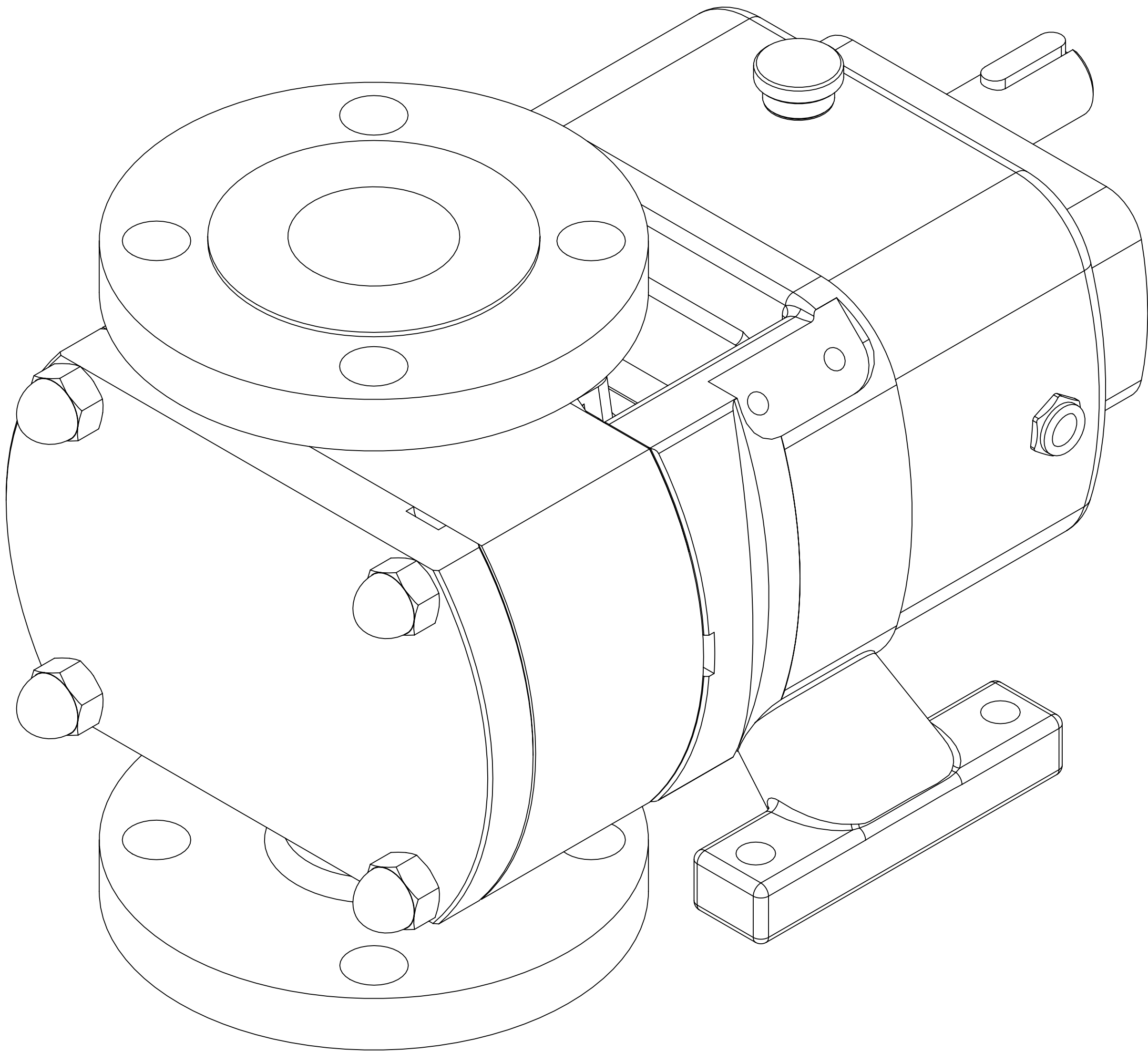


GENERAL ARRANGEMENT DETAILS

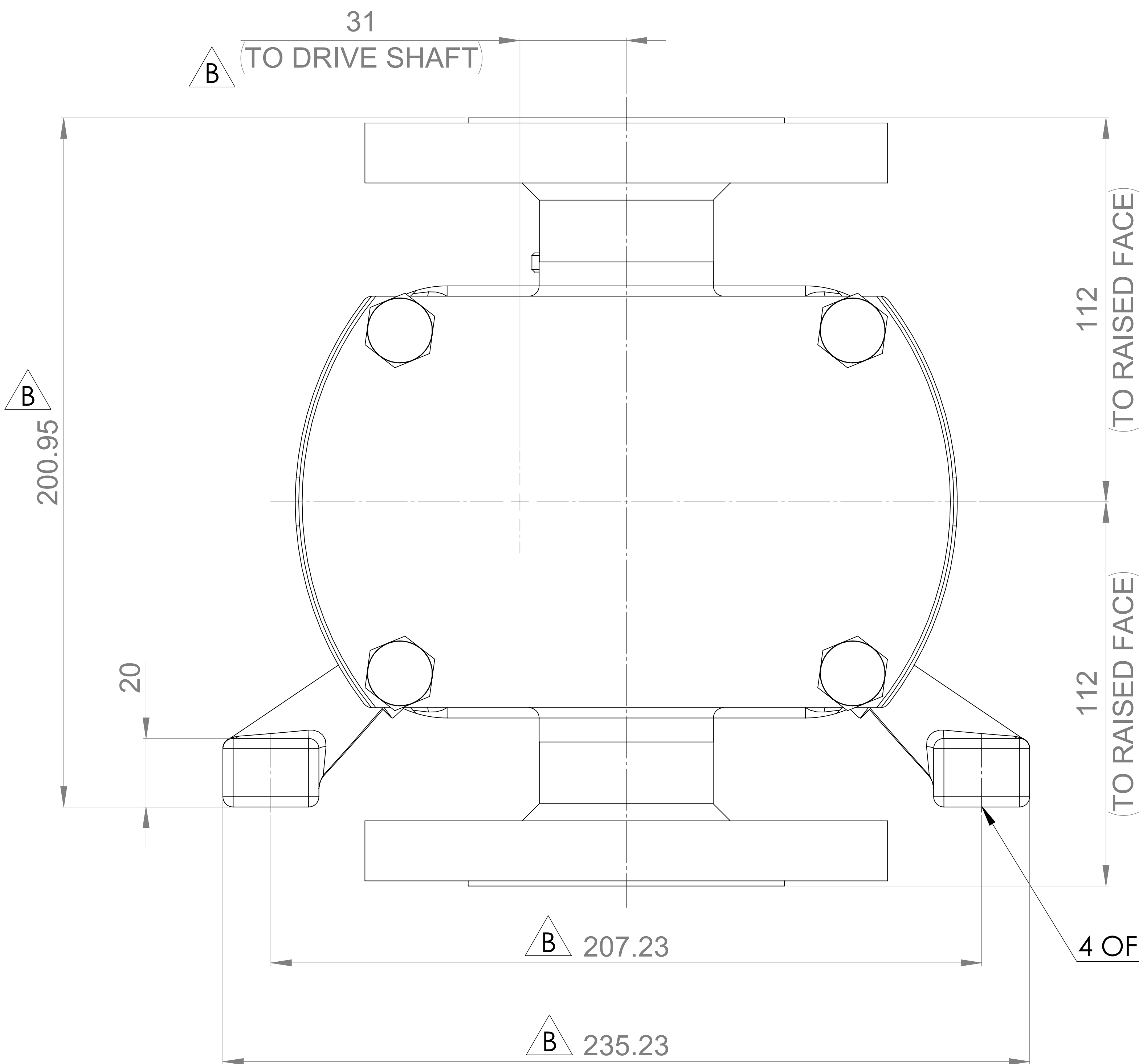
PUMP INFORMATION

PUMP MODEL	MULTIPUMP MP20/0031/07
LEFT/TOP CONNECTION	2" ASA/ANSI 150 lb RF
RIGHT/BOTTOM CONNECTION	2" ASA/ANSI 150 lb RF
DRIVE SHAFT POSITION	LEFT HAND DRIVE
FRONT COVER ADDITIONS	STANDARD
ROTORCASE ADDITIONS	STANDARD
GEARBOX ADDITIONS	STANDARD
PUMP ADDITIONS	STANDARD

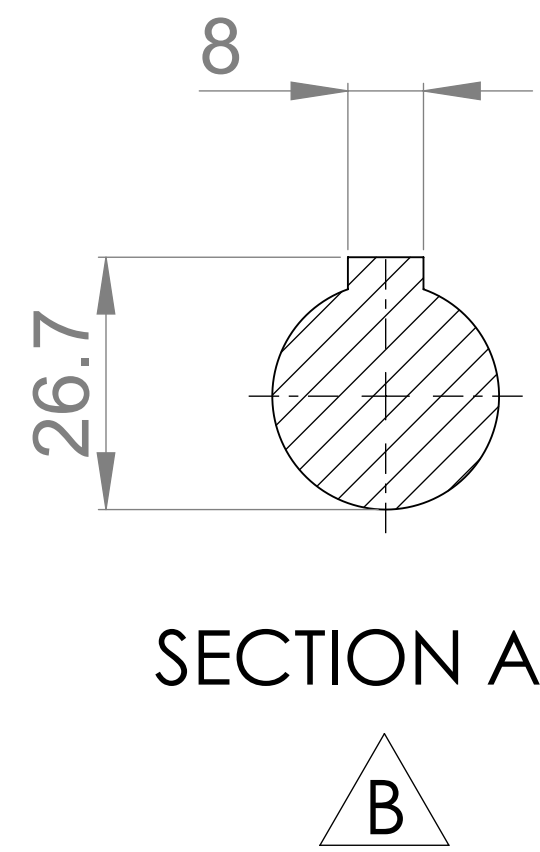
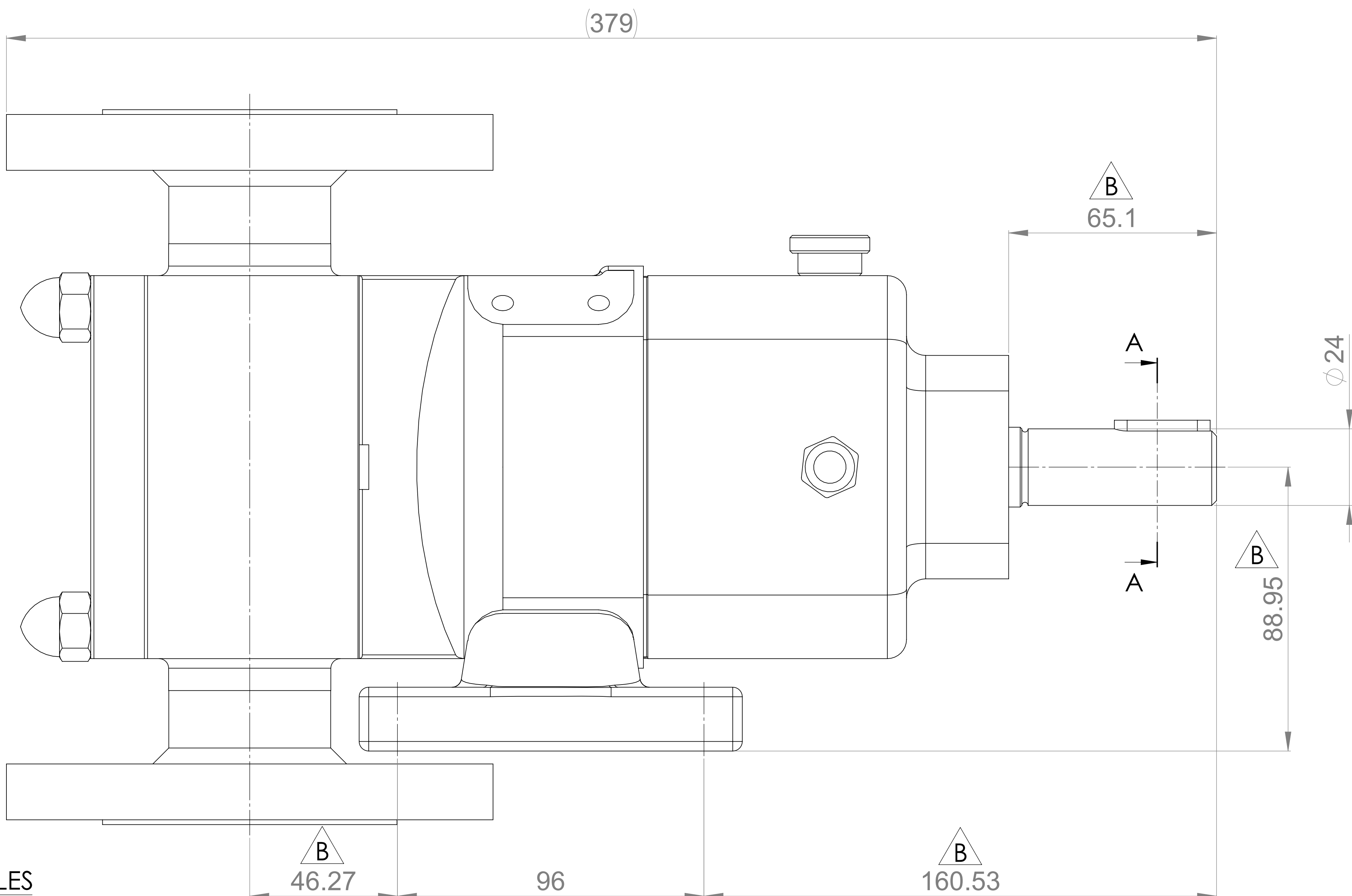
THIS IS NOT A CERTIFIED DRAWING, USE FOR GENERAL
INSTALLATION ONLY



B



4 OFF Ø 11 HOLES



SECTION A-A

B

UPDATED FORMAT AND PRECISION	B	10/10/2024
ISSUED	A	05/01/2021
AMENDMENT	ISSUE	DATE



HIGHFIELD INDUSTRIAL ESTATE,
EAST SUSSEX, BN23 6PT
TEL: (+44) 1323 509211

COPYRIGHT:

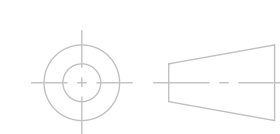
THIS DRAWING IS THE SOLE
PROPERTY OF
VIKING PUMP HYGIENIC LTD.
IT MUST NOT BE COPIED OR USED
IN PART OR FULL WITHOUT PRIOR
WRITTEN CONSENT.

UNLESS OTHERWISE STATED:

ALL DIMENSIONS ± 2.50
ANGLES ±2.0°
DO NOT SCALE THIS DRAWING
REMOVE BURRS AND SHARP EDGES
DIMENSIONS IN MILLIMETRES

IF IN DOUBT ASK

PROJECTION



DRAWN

CHECKED

DTL KCB

TITLE:

GENERAL ARRANGEMENT

DRG. NO:

GA4517