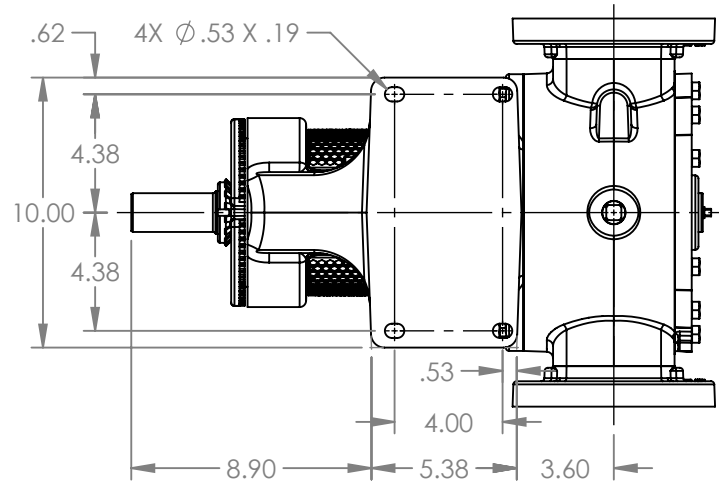
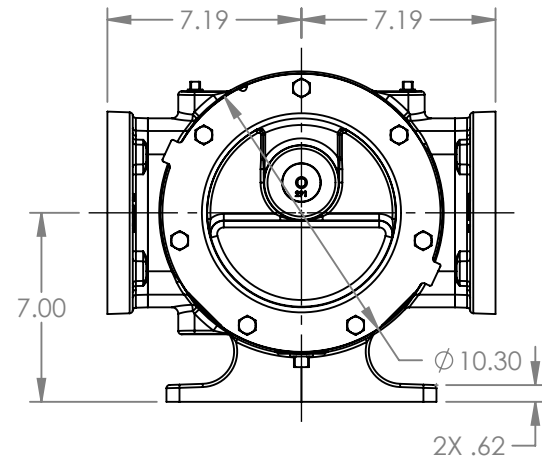
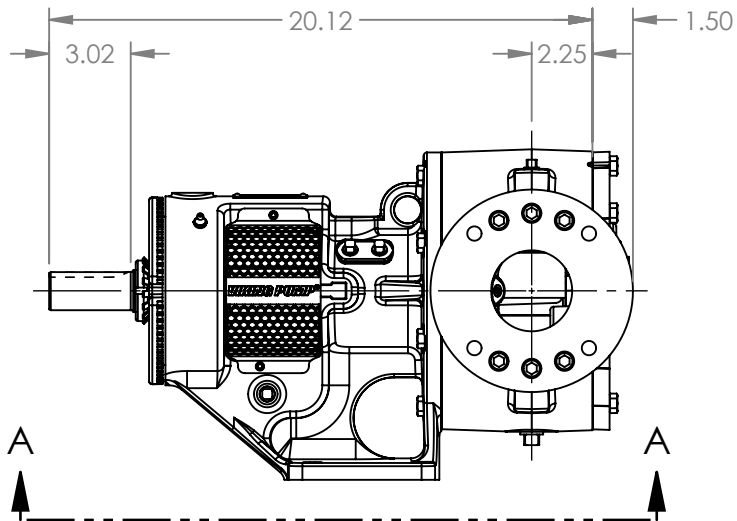


PORTS: 2X 3" FLANGES  
 DRILLED AND TAPPED  
 SUITABLE FOR USE WITH  
 CLASS 125 ANSI FLANGES



VIEW A-A



MODELS WITH OPTIONAL FLANGED PORTS:  
 LL124C, LL1124C, LL4124C, LL4624C

NOTES:  
 1. ALL DIMENSIONS ARE FOR REFERENCE ONLY.

STATE	Released	01/05/2026
DRAWN	aeverhardt	12/04/2025
CHECKED	DTL	01/05/2026

DIMENSIONS ARE IN  
 INCHES  
 PROJECT: E399  
 WAS:



VIKING PUMP, INC.  
 A Unit of IDEX Corporation  
 Cedar Falls, IA 50613 U.S.A.  
 VIKINGPUMP.COM

THIS DRAWING IS THE PROPERTY OF  
 VIKING PUMP, INC. AND IS PROPRIETARY  
 IN GENERAL AND DETAIL. IT SHALL NOT BE  
 COPIED OR ITS CONTENTS REVEALED TO  
 OUTSIDE PARTIES WITHOUT THE WRITTEN  
 CONSENT OF VIKING PUMP, INC.

3D

DWG. NO.  
 LV-4841

SHEET 1 OF 1

REV. A.0

01/05/2026