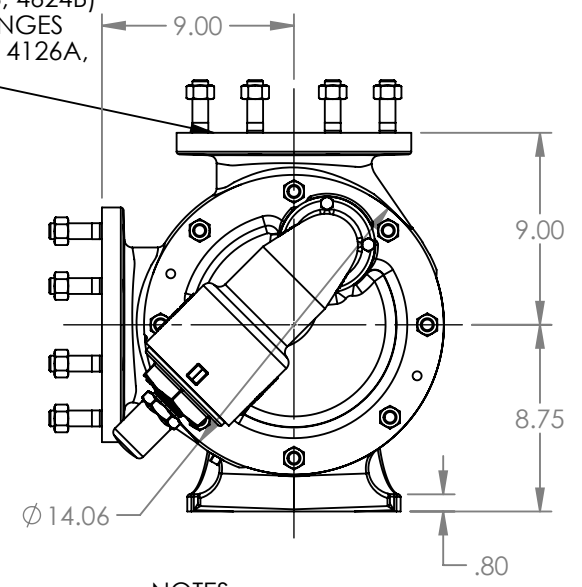
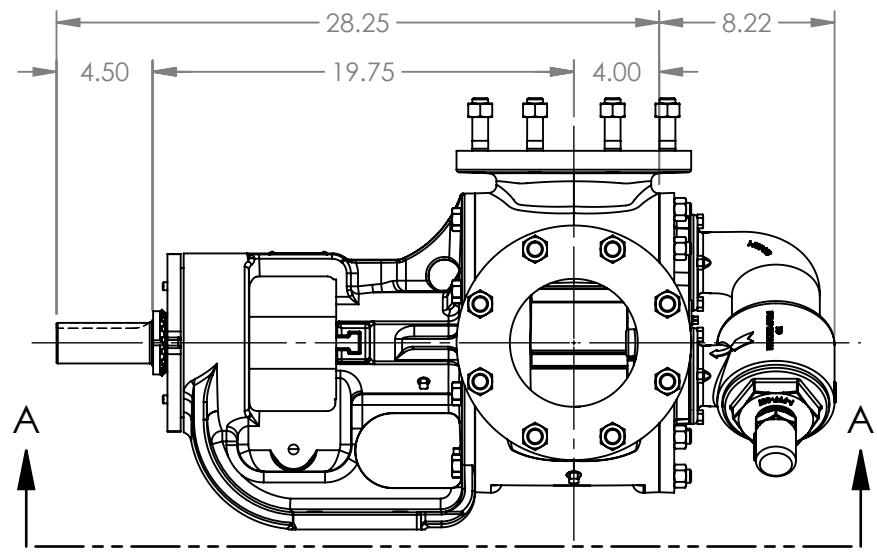


PORTS: 2X 6" FLANGES
 SUITABLE FOR USE WITH
 CLASS 125 ANSI FLANGES
 (124A, 4124A, 4124B, 4624B)
 CLASS 150 ANSI FLANGES
 (123A, 4123A, 126A, 4126A,
 127A, 4127A)

VIEW A-A



NOTES:
 1. ALL DIMENSIONS ARE FOR REFERENCE ONLY

MODELS WITH OPTIONAL FLANGED PORTS:
 QS123A, QS4123A, QS124A, QS4124A, QS126A, QS4126A, QS127A, QS4127A, QS4124B, QS4624B

STATE	Released	03/05/2021	DIMENSIONS ARE IN INCHES		VIKING PUMP, INC. A Unit of IDEX Corporation Cedar Falls, IA 50613 U.S.A.	THIS DRAWING IS THE PROPERTY OF VIKING PUMP, INC. AND IS PROPRIETARY IN GENERAL AND DETAIL. IT SHALL NOT BE COPIED OR ITS CONTENTS REVEALED TO OUTSIDE PARTIES WITHOUT THE WRITTEN CONSENT OF VIKING PUMP, INC.	3D	DWG. NO.	SHEET 1 OF 1	REV. A.1	
DRAWN	AMeek	1/11/2019						PROJECT:	QV-1713		
CHECKED	GDJ	03/05/2021						WAS:			03/05/2021