

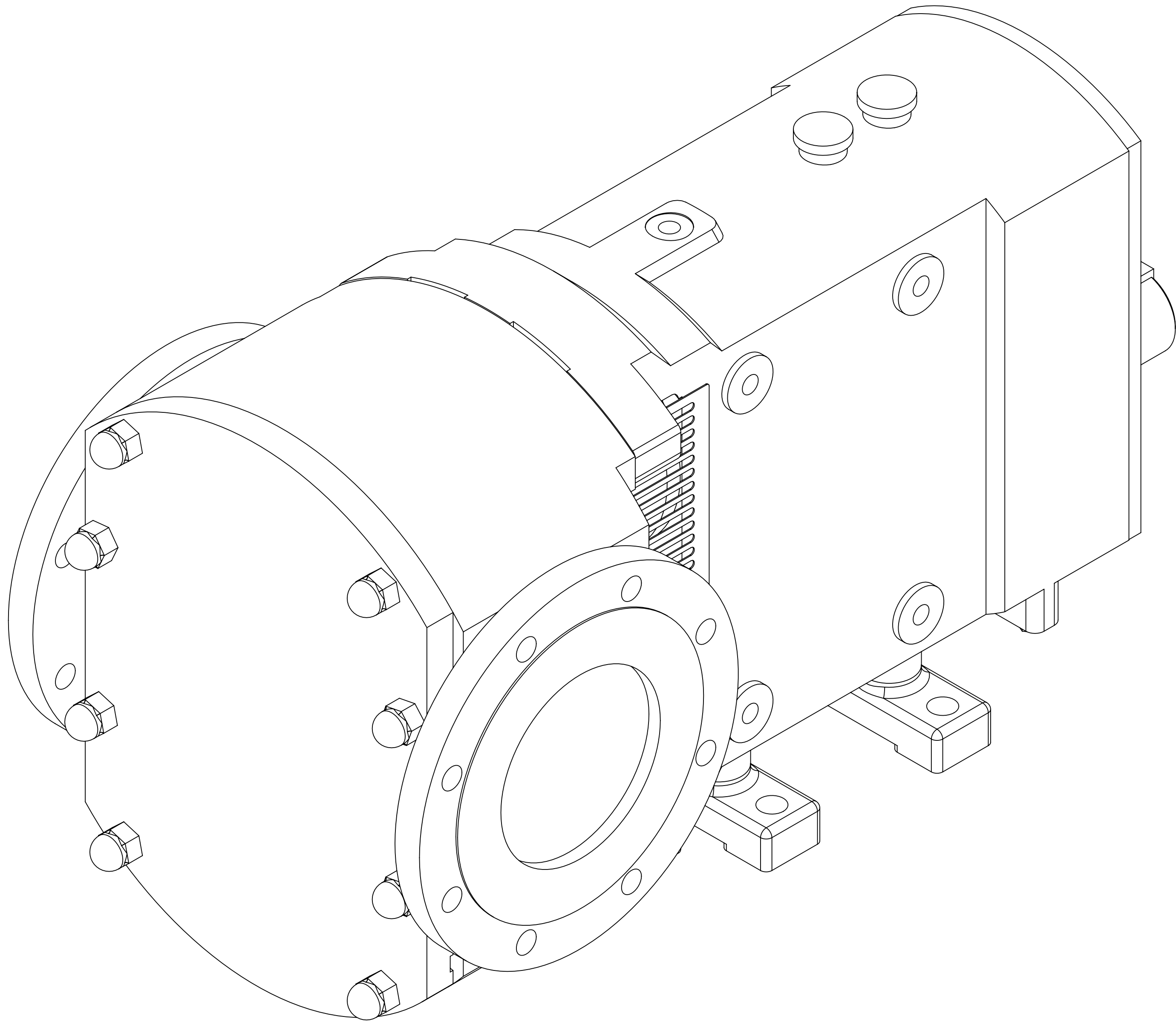
GENERAL ARRANGEMENT DETAILS

PUMP INFORMATION

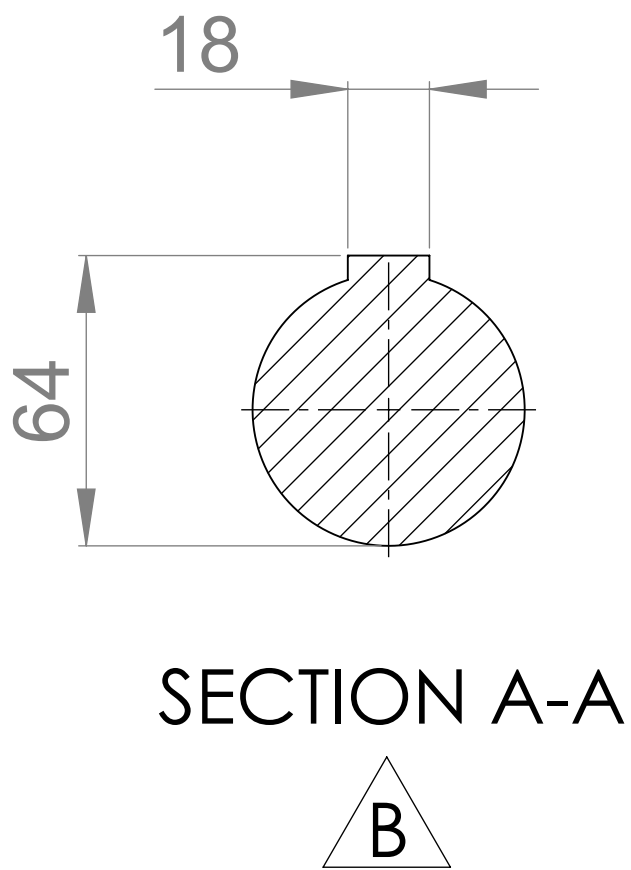
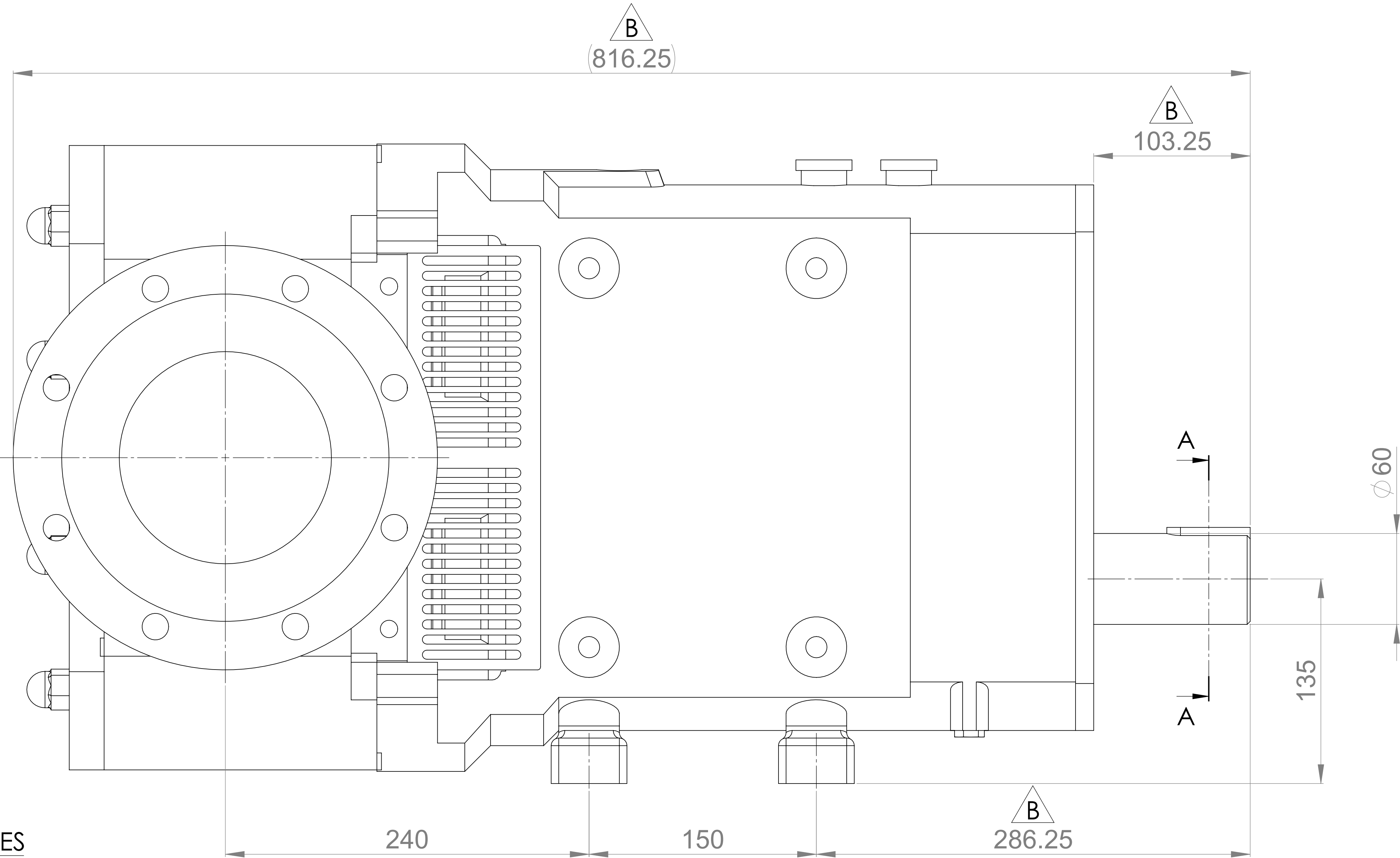
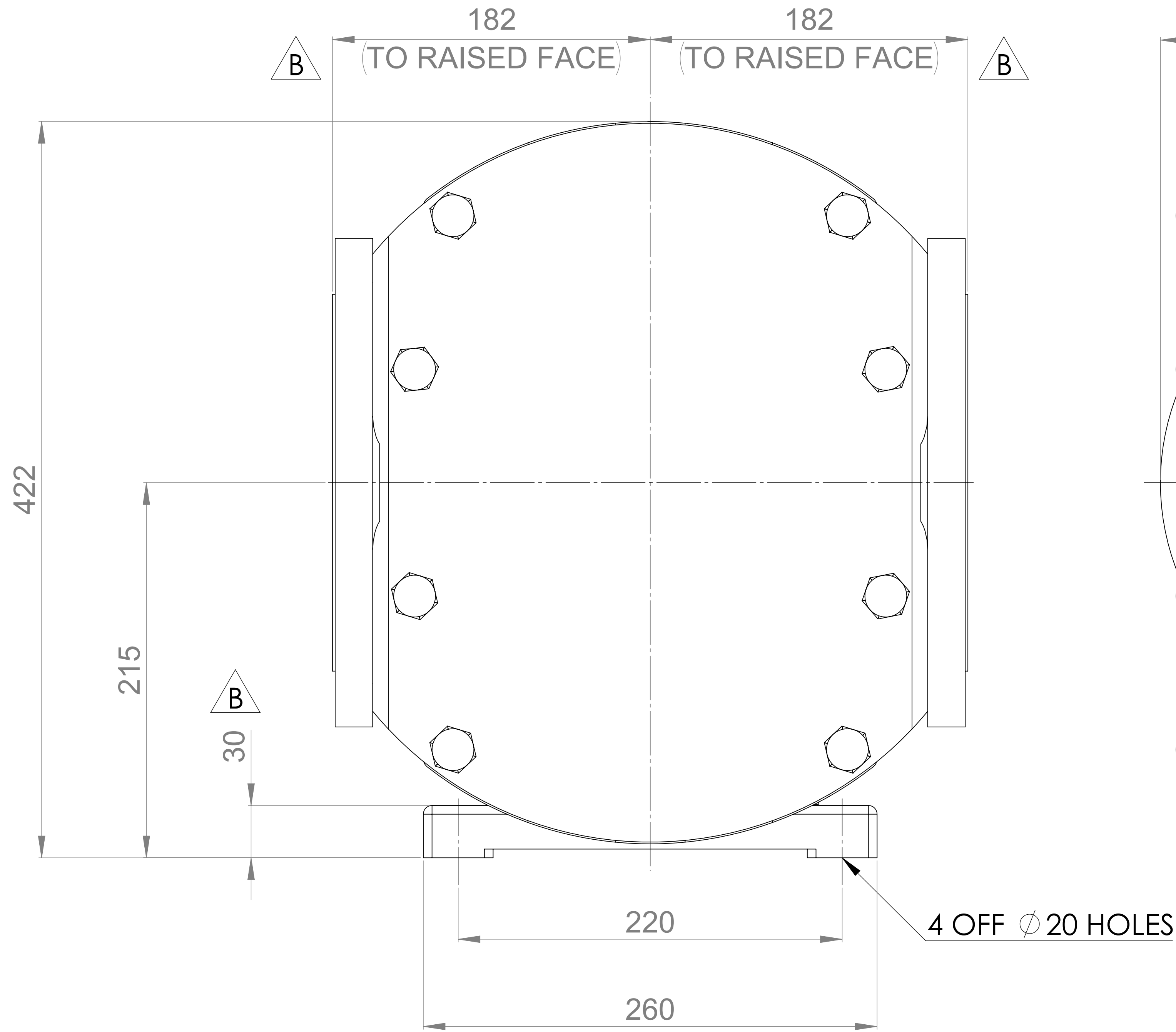
PUMP MODEL	MULTIPUMP MP50/0525/08
LEFT/TOP CONNECTION	6" ASA/ANSI 150 lb RF
RIGHT/BOTTOM CONNECTION	6" ASA/ANSI 150 lb RF
DRIVE SHAFT POSITION	BOTTOM SHAFT DRIVE
FRONT COVER ADDITIONS	STANDARD
ROTORCASE ADDITIONS	STANDARD
GEARBOX ADDITIONS	STANDARD
PUMP ADDITIONS	STANDARD

THIS IS NOT A CERTIFIED DRAWING, USE FOR GENERAL
INSTALLATION ONLY

B



B
(816.25)



UPDATED FORMAT AND PRECISION	B	09/10/2024
ISSUE	A	20/07/2017
AMENDMENT	ISSUE	DATE



HIGHFIELD INDUSTRIAL ESTATE,
EASTBOURNE,
EAST SUSSEX, BN23 6PT
TEL: (+44) 1323 509211

COPYRIGHT:

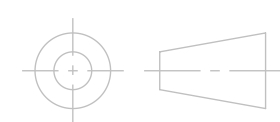
THIS DRAWING IS THE SOLE
PROPERTY OF
VIKING PUMP HYGIENIC LTD.
IT MUST NOT BE COPIED OR USED
IN PART OR FULL WITHOUT PRIOR
WRITTEN CONSENT.

UNLESS OTHERWISE STATED:

ALL DIMENSIONS ± 2.50
ANGLES ±2.0°
DO NOT SCALE THIS DRAWING
REMOVE BURRS AND SHARP EDGES
DIMENSIONS IN MILLIMETRES

IF IN DOUBT ASK

PROJECTION



DRAWN

MR

CHECKED

TR

TITLE:

GENERAL ARRANGEMENT

DRG. NO:

GA3714