

DATA SHEET

Three Phase Induction Motor - Squirrel Cage



Customer :

Product line : W22 NEMA Premium Efficiency Three-Phase Product code : 11355771
Catalog # : 12512ET3E445T-W22

Frame	: 444/5T	Locked rotor time	: 34s (cold) 19s (hot)
Output	: 125 HP	Temperature rise	: 80 K
Poles	: 6	Duty cycle	: Cont.(S1)
Frequency	: 60 Hz	Ambient temperature	: -20°C to +40°C
Rated voltage	: 208-230/460 V	Altitude	: 1000 m.a.s.l.
Rated current	: 316-286/143 A	Protection degree	: IP55
L. R. Amperes	: 2024-1830/915 A	Cooling method	: IC411 - TEFC
LRC	: 6.4x(Code G)	Mounting	: F-1
No load current	: 96.6-112/56.0 A	Rotation ¹	: Both (CW and CCW)
Rated speed	: 1185 rpm	Noise level ²	: 69.0 dB(A)
Slip	: 1.25 %	Starting method	: Direct On Line
Rated torque	: 547 ft.lb	Approx. weight ³	: 1819 lb
Locked rotor torque	: 210 %		
Breakdown torque	: 240 %		
Insulation class	: F		
Service factor	: 1.15		
Moment of inertia (J)	: 104 sq.ft.lb		
Design	: B		

Output	25%	50%	75%	100%	Foundation loads	
Efficiency (%)	95.2	95.0	95.4	95.0	Max. traction	: 3177 lb
Power Factor	0.45	0.70	0.79	0.83	Max. compression	: 4995 lb

		Drive end	Non drive end
Bearing type	:	6319 C3	6316 C3
Sealing	:	WSeal	WSeal
Lubrication interval	:	13000 h	16000 h
Lubricant amount	:	45 g	34 g
Lubricant type	:	Mobil Polyrex EM	

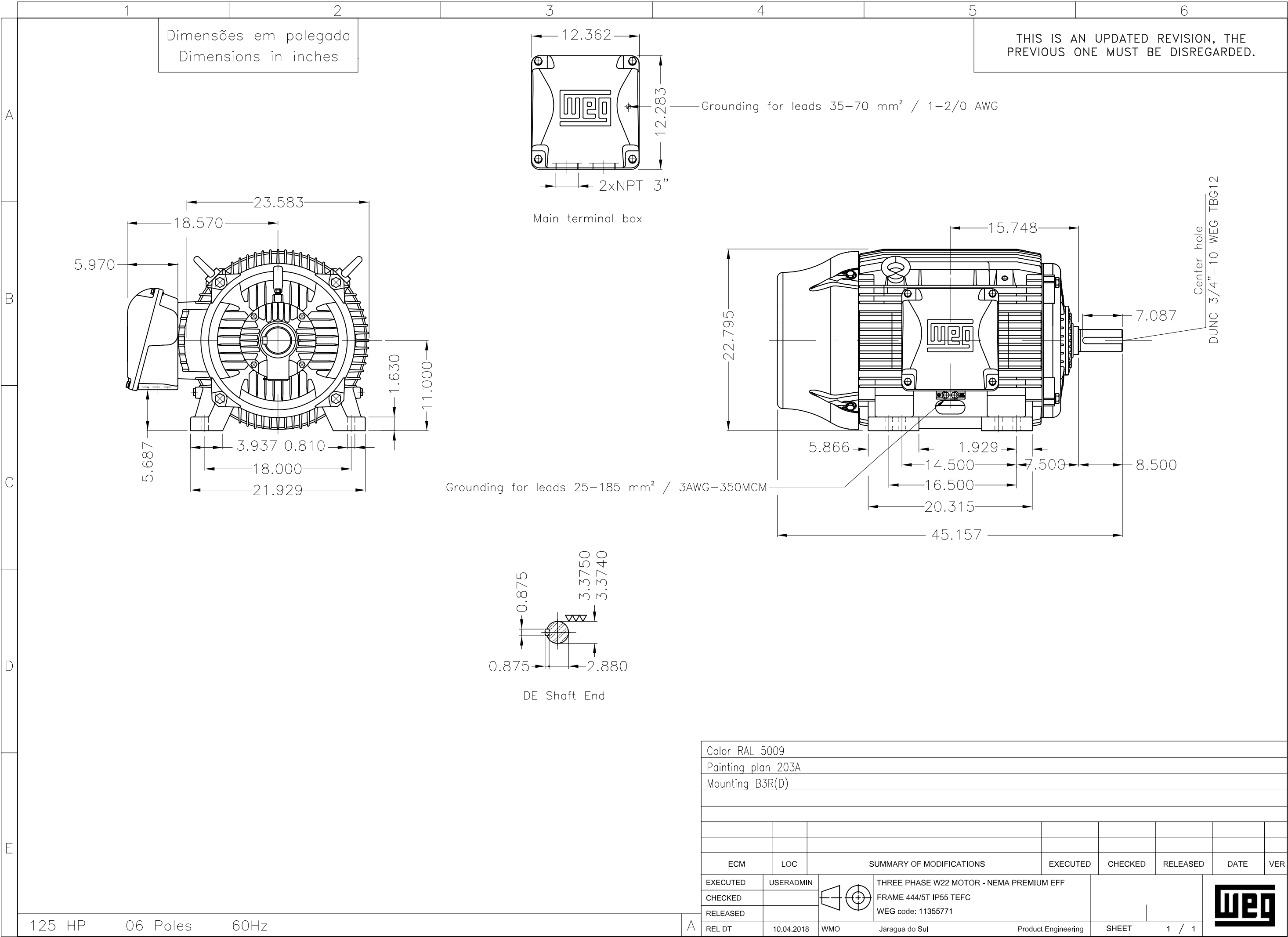
Notes

This revision replaces and cancel the previous one, which must be eliminated.

- (1) Looking the motor from the shaft end.
- (2) Measured at 1m and with tolerance of +3dB(A).
- (3) Approximate weight subject to changes after manufacturing process.
- (4) At 100% of full load.

These are average values based on tests with sinusoidal power supply, subject to the tolerances stipulated in NEMA MG-1.

Rev.	Changes Summary	Performed	Checked	Date
Performed by		Page Revision 1 / 1		
Checked by				
Date	10/04/2018			



LOAD PERFORMANCE CURVE

Three Phase Induction Motor - Squirrel Cage

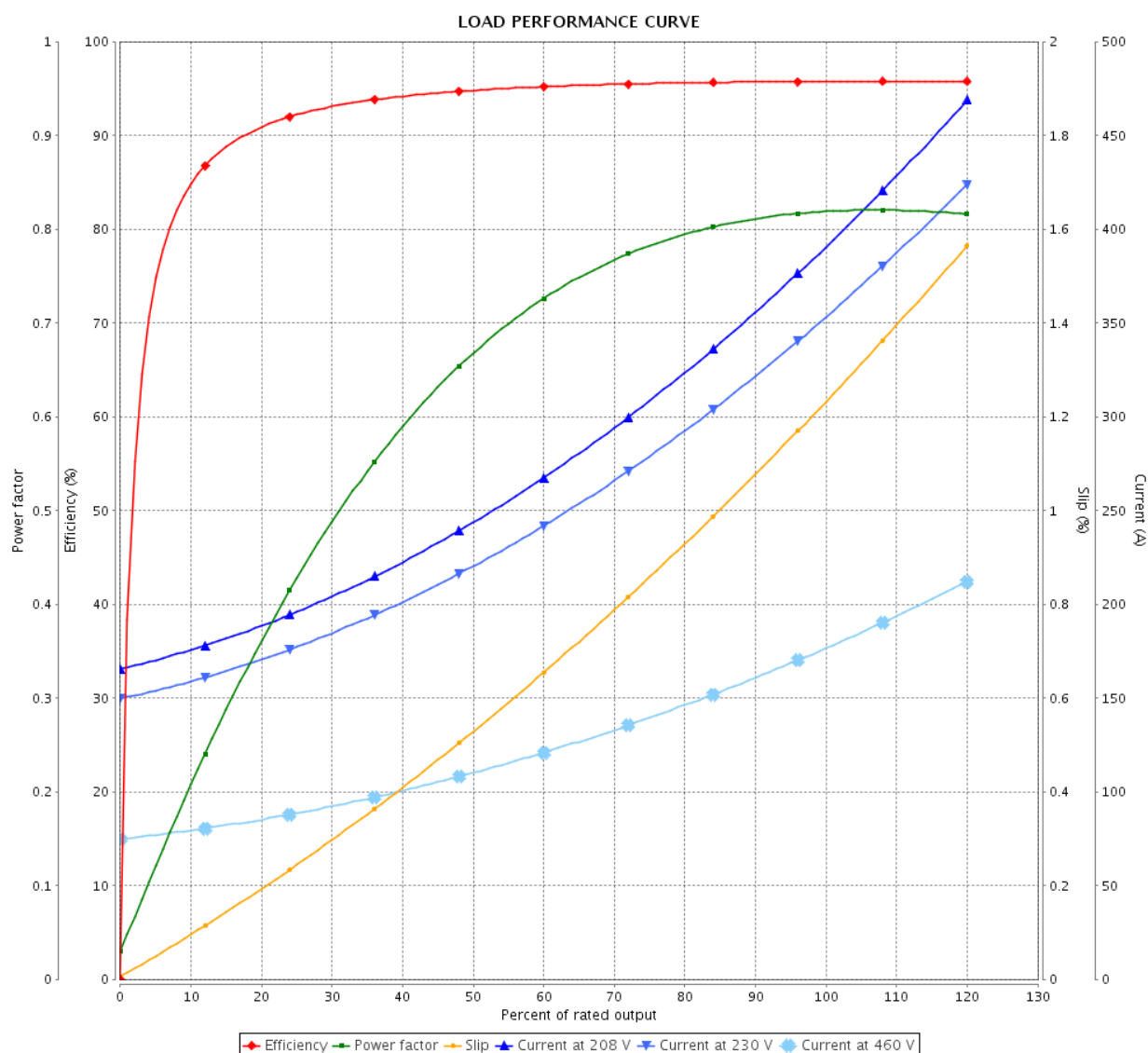


Customer :

Product line : W22 NEMA Premium Efficiency
Three-Phase

Product code : 11626903

Catalog # : 15012ET3E447T-W22



Performance : 208-230/460 V 60 Hz 6P

Rated current : 389-352/176 A
LRC : 6.2
Rated torque : 90.6 kgfm
Locked rotor torque : 240 %
Breakdown torque : 260 %
Rated speed : 1185 rpm

Moment of inertia (J) : 5.63 kgm²
Duty cycle : Cont.(S1)
Insulation class : F
Service factor : 1.15
Temperature rise : 80 K
Design : B

Rev.	Changes Summary	Performed	Checked	Date
Performed by		Page 3 / 6Revision		
Checked by				
Date	23/05/2018			

THERMAL LIMIT CURVE

Three Phase Induction Motor - Squirrel Cage



Customer

:

Product line

: W22 NEMA Premium Efficiency
Three-Phase

Product code :

11626903

Catalog # :

15012ET3E447T-W22

Performance : 208-230/460 V 60 Hz 6P

Rated current : 389-352/176 A
LRC : 6.2
Rated torque : 90.6 kgfm
Locked rotor torque : 240 %
Breakdown torque : 260 %
Rated speed : 1185 rpm

Moment of inertia (J) : 5.63 kgm²
Duty cycle : Cont.(S1)
Insulation class : F
Service factor : 1.15
Temperature rise : 80 K
Design : B

Heating constant

Cooling constant

Rev.

Changes Summary

Performed

Checked

Date

Performed by

Checked by

Date

23/05/2018

Page

4 / 6

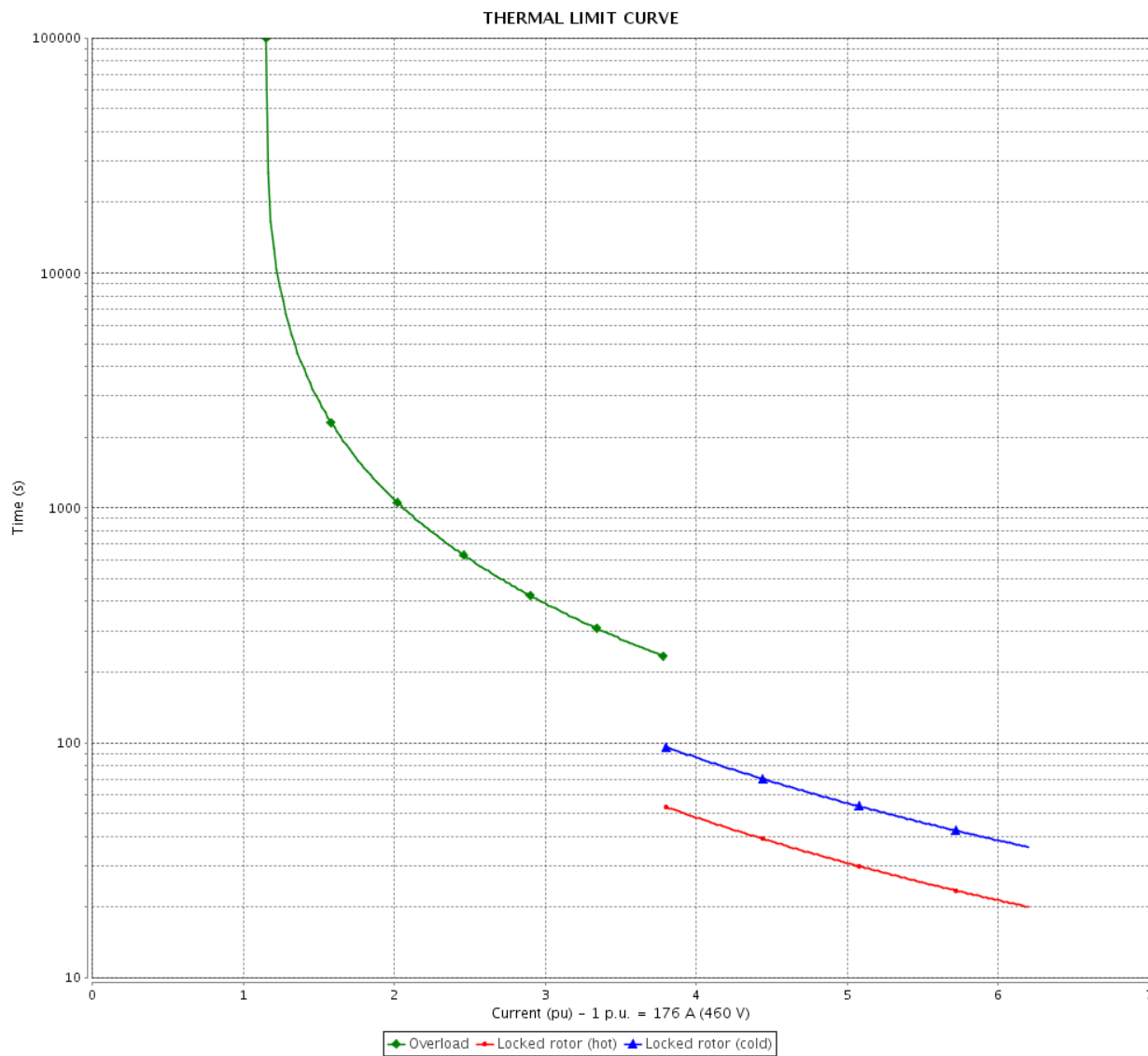
Revision

THERMAL LIMIT CURVE

Three Phase Induction Motor - Squirrel Cage



Customer : _____



Rev.	Changes Summary		Performed	Checked	Date
Performed by					Page 5 / 6
Checked by					
Date	23/05/2018				
			Revision		

VFD OPERATION CURVE

Three Phase Induction Motor - Squirrel Cage

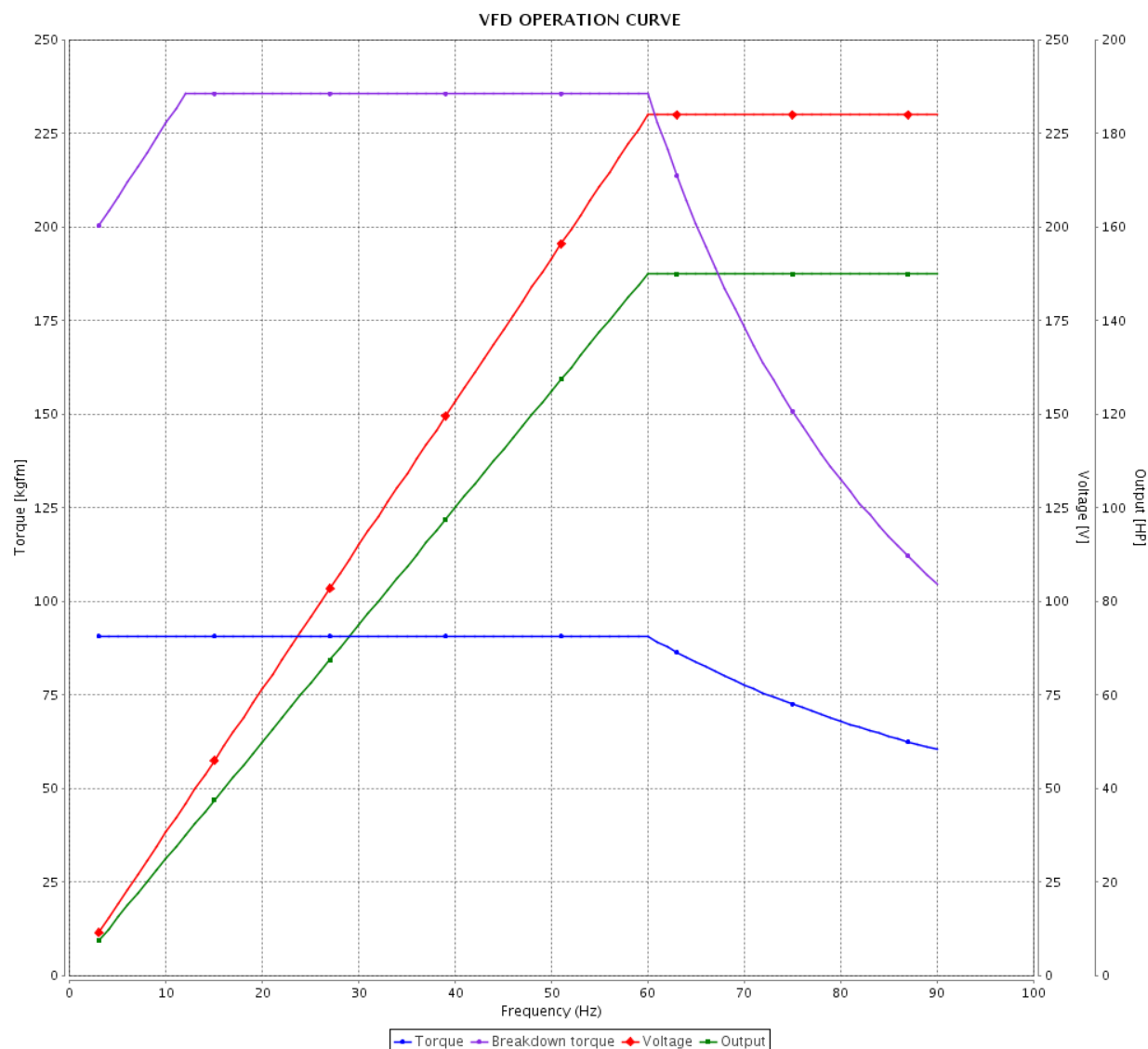


Customer :

Product line : W22 NEMA Premium Efficiency
Three-Phase

Product code : 11626903

Catalog # : 15012ET3E447T-W22

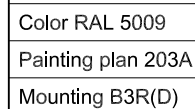
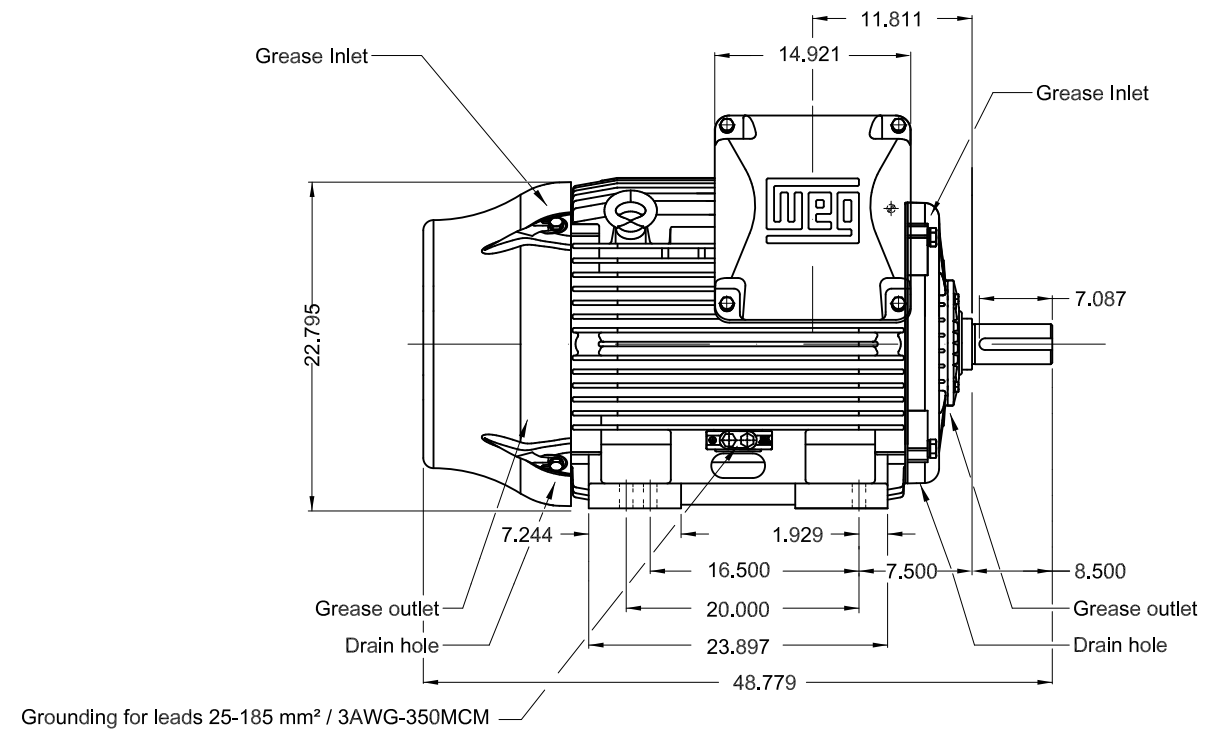




Performance : 208-230/460 V 60 Hz 6P

Rated current : 389-352/176 A
LRC : 6.2
Rated torque : 90.6 kgfm
Locked rotor torque : 240 %
Breakdown torque : 260 %
Rated speed : 1185 rpm

Moment of inertia (J) : 5.63 kgm²
Duty cycle : Cont.(S1)
Insulation class : F
Service factor : 1.15
Temperature rise : 80 K
Design : B

Rev.	Changes Summary		Performed	Checked	Date
Performed by				Page	Revision
Checked by				6 / 6	
Date					



150 HP 06 Poles 60Hz										A
ECM	LOC	SUMMARY OF MODIFICATIONS				EXECUTED	CHECKED	RELEASED	DATE	VER
EXECUTED	USERADMIN		THREE PHASE W22 MOTOR - NEMA PREMIUM EFF FRAME 445/7T IP55 TEFC				PREVIEW WDD			
CHECKED										
RELEASED										
REL DT		WMO	Jaragua do Sul	Product Engineering	SHEET	1 / 1				