

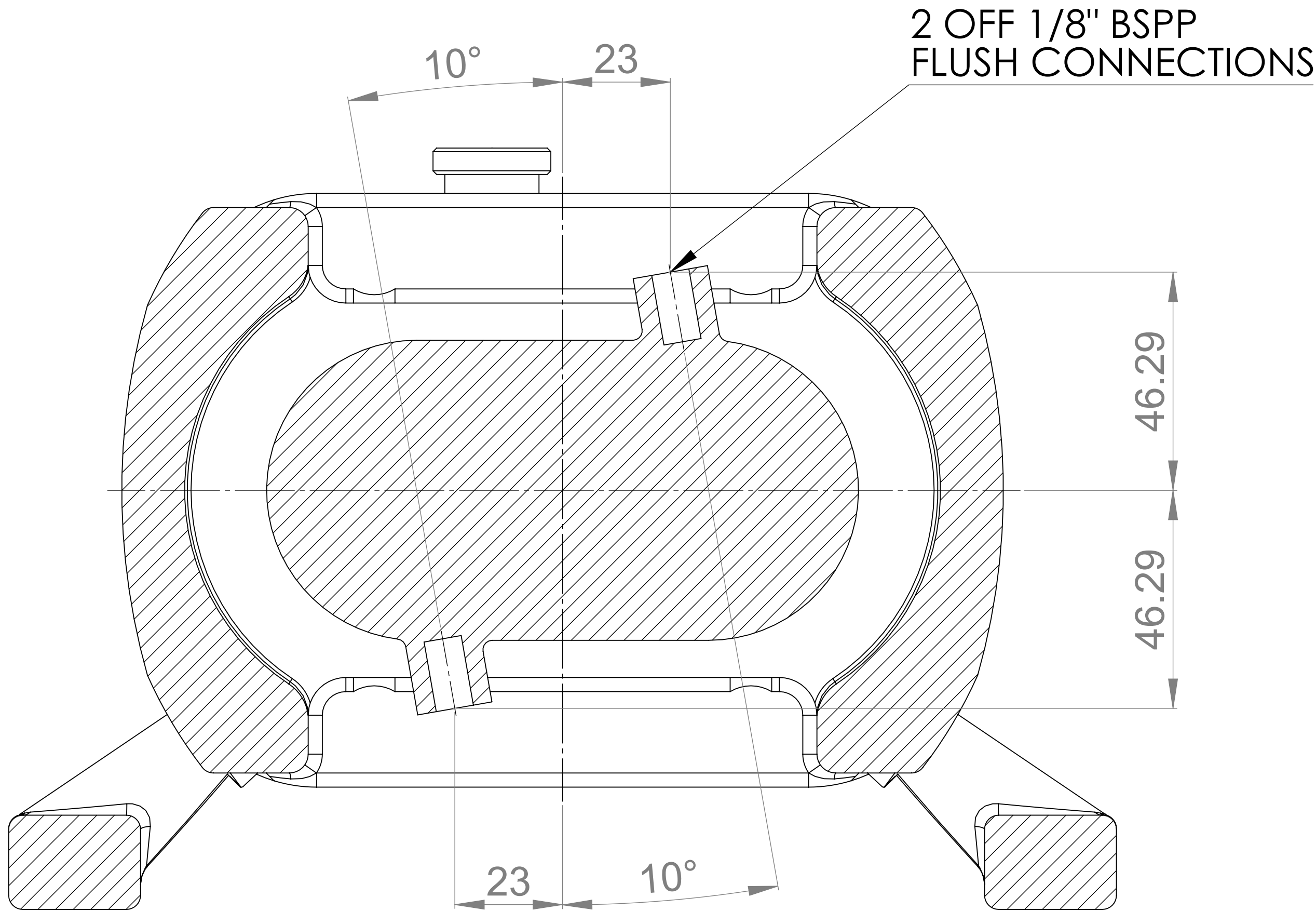
GENERAL ARRANGEMENT DETAILS

PUMP INFORMATION

PUMP MODEL	MULTIPUMP MP20/0020/12
LEFT/TOP CONNECTION	1.5" TRI-CLAMP
RIGHT/BOTTOM CONNECTION	1.5" TRI-CLAMP
DRIVE SHAFT POSSITION	LEFT HAND DRIVE
FRONT COVER ADDITIONS	STANDARD
ROTORCASE ADDITIONS	STANDARD
GEARBOX ADDITIONS	STANDARD
PUMP ADDITIONS	FLUSHING

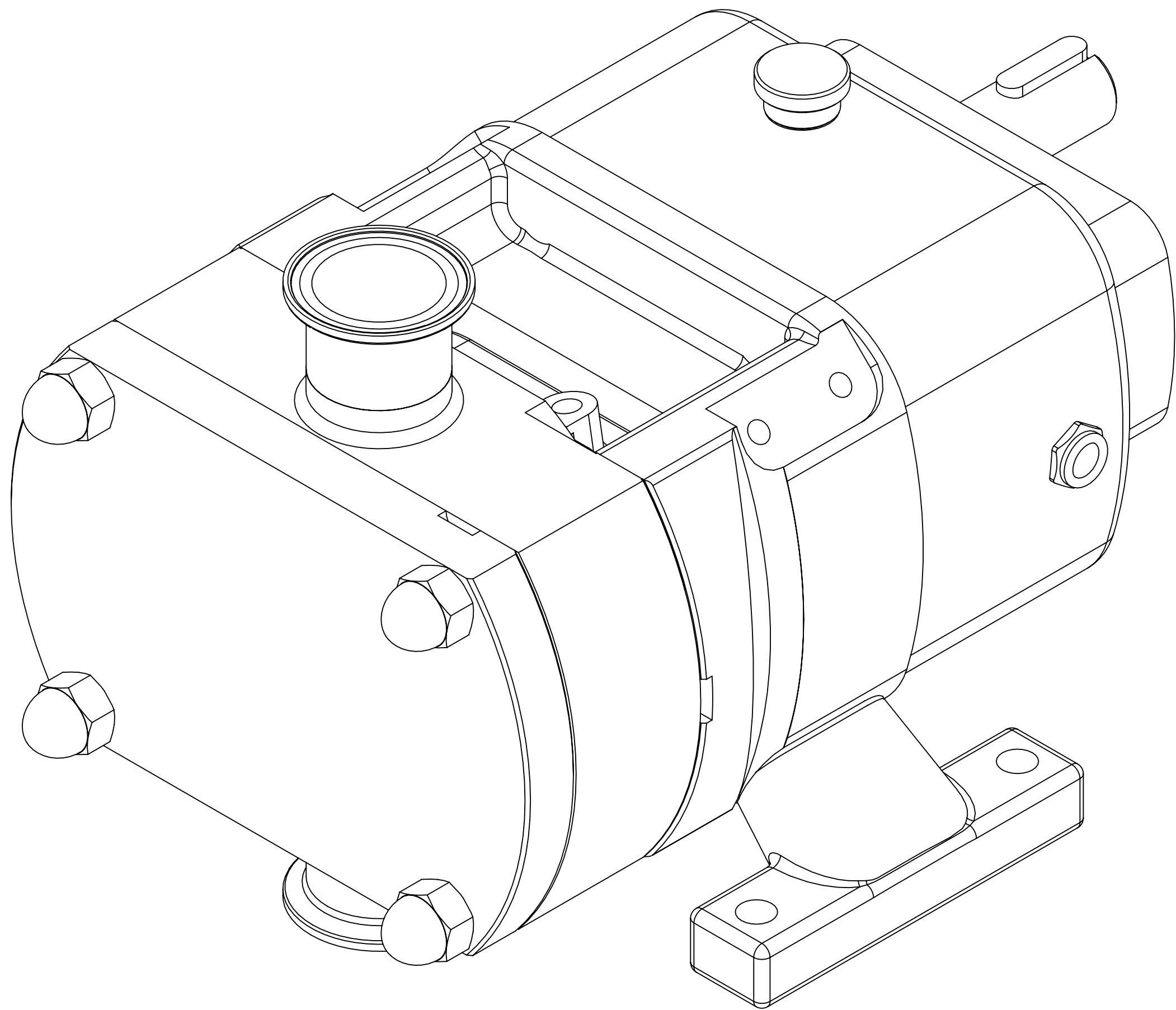
THIS IS NOT A CERTIFIED DRAWING, USE FOR GENERAL  
INSTALLATION ONLY

B

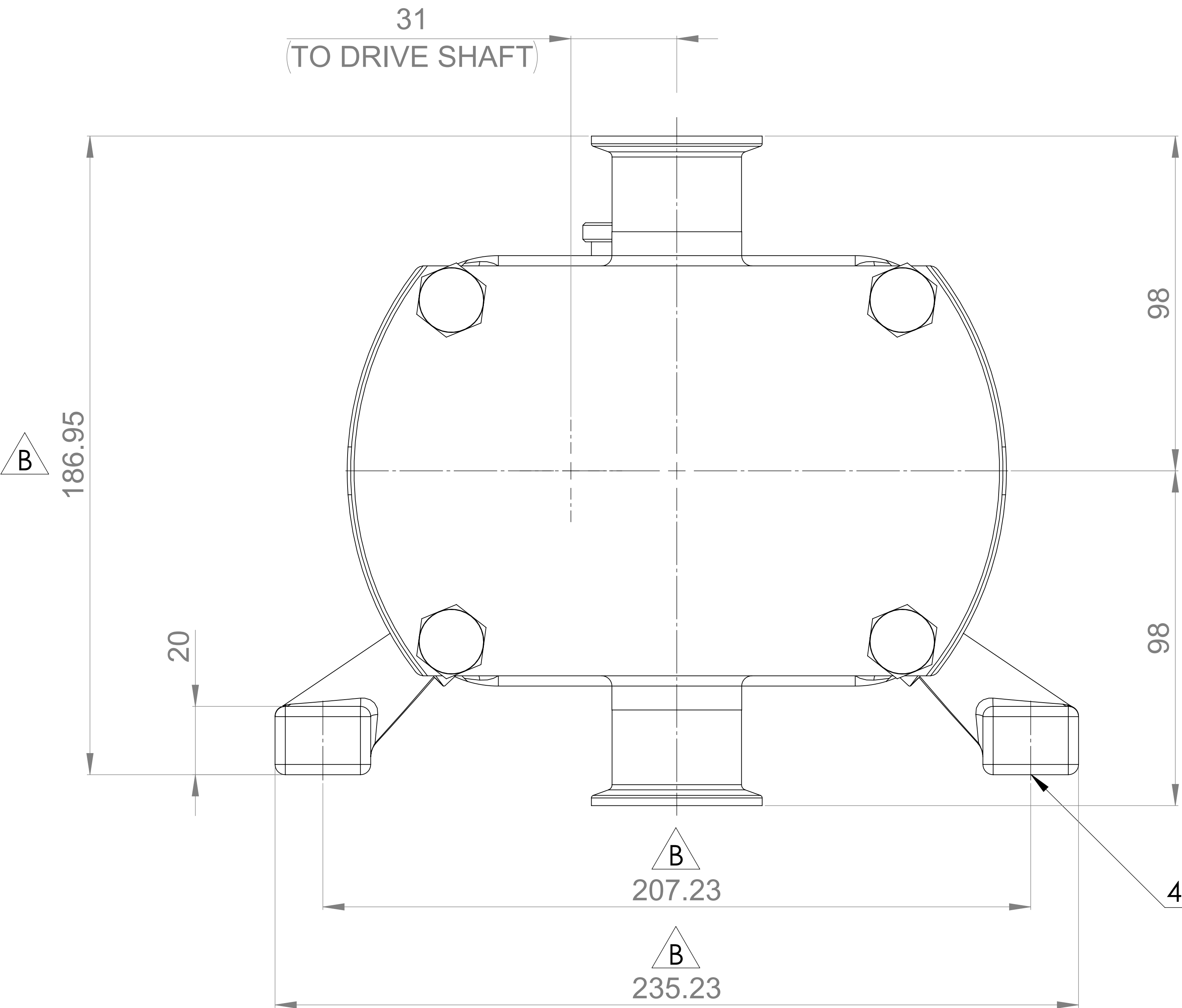


SECTION B-B

B



31  
(TO DRIVE SHAFT)

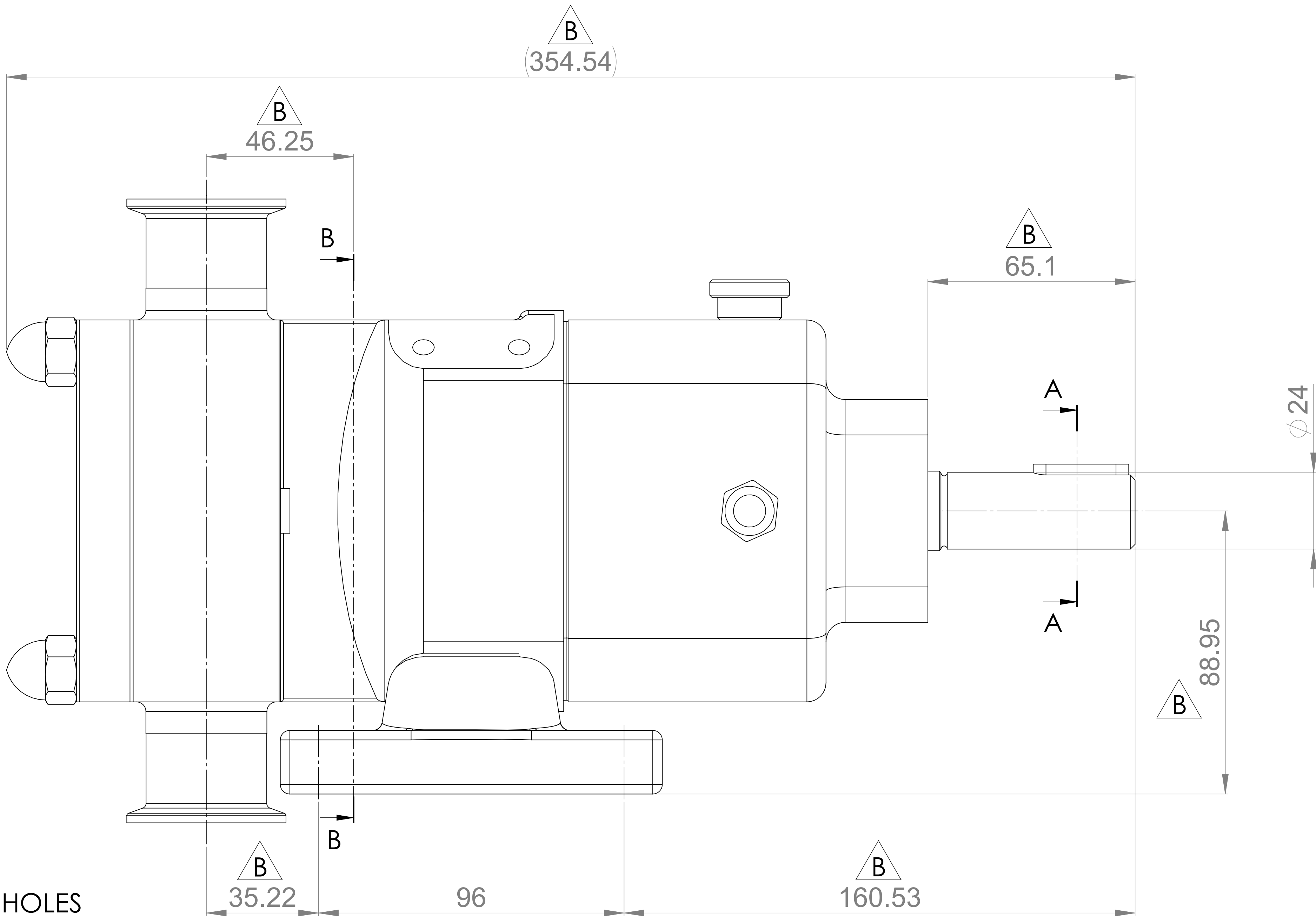


B

B  
207.23

B  
235.23

4 OFF Ø11 HOLES



B

B  
46.25

B  
35.22

96

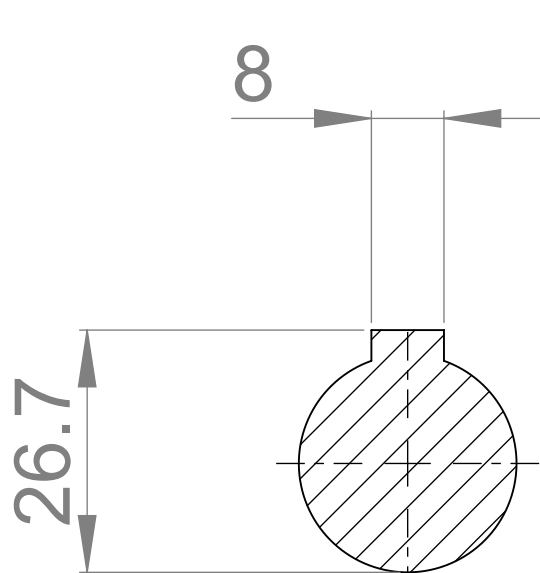
B  
160.53

A

A

B  
88.95

Ø 24



SECTION A-A

B

UPDATED FORMAT AND PRECISION, ADDED FLUSH DETAIL	B	16/10/2024
ISSUED	A	07/05/2020
AMENDMENT	ISSUE	DATE

**VIKING PUMP**  
HYGIENIC  
HIGHFIELD INDUSTRIAL ESTATE,  
EASTBOURNE,  
EAST SUSSEX, BN23 6PT  
TEL: (+44) 1323 509211

**COPYRIGHT:**  
THIS DRAWING IS THE SOLE  
PROPERTY OF  
**VIKING PUMP HYGIENIC LTD.**  
IT MUST NOT BE COPIED OR USED  
IN PART OR FULL WITHOUT PRIOR  
WRITTEN CONSENT.

UNLESS OTHERWISE STATED:  
ALL DIMENSIONS ± 2.50  
ANGLES ±2.0°  
DO NOT SCALE THIS DRAWING  
REMOVE BURRS AND SHARP EDGES  
DIMENSIONS IN MILLIMETRES  
**IF IN DOUBT ASK**

PROJECTION	DRAWN	CHECKED
	KCB	IPJB

TITLE:	GENERAL ARRANGEMENT
DRG. NO:	<b>GA4391</b>