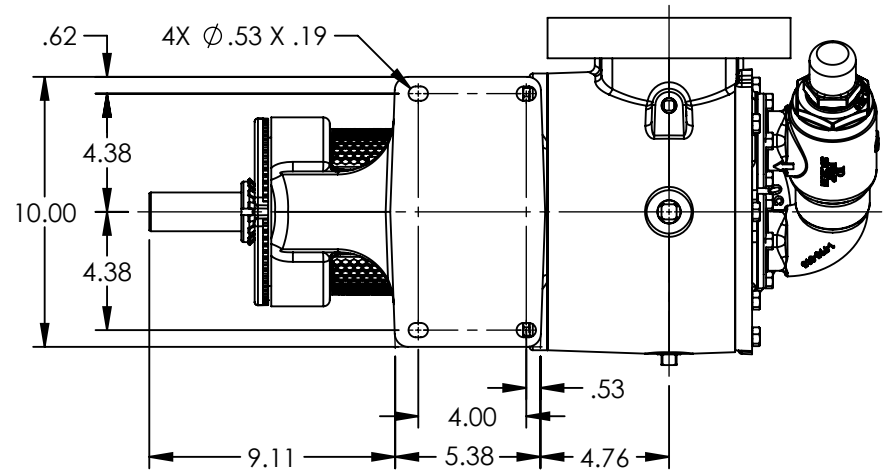
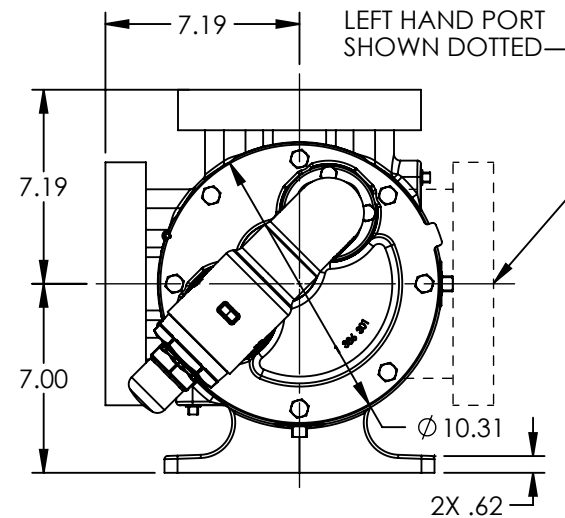
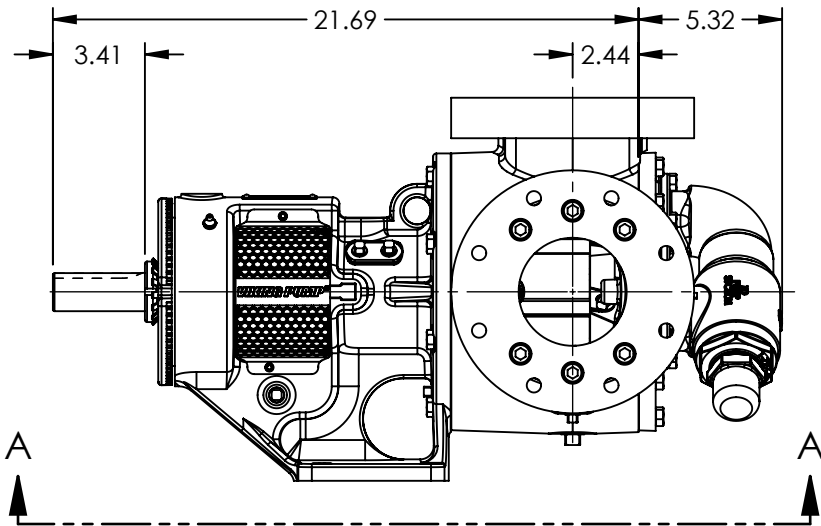


PORTS: 2X 4" FLANGES  
 DRILLED AND TAPPED  
 SUITABLE FOR USE WITH  
 CLASS 125 ANSI FLANGES  
 (124C, 1124C, 4124C)  
 CLASS 150 ANSI FLANGES  
 (123C, 4123C, 126C, 4126C, 127C, 1127C, 4127C)



VIEW A-A



MODELS WITH OPTIONAL FLANGED PORTS:  
 LS123C, LS4123C, LS124C, LS1124C, LS4124C, LS126C, LS4126C, LS127C, LS1127C, LS4127C

NOTES:  
 1. ALL DIMENSIONS ARE FOR REFERENCE ONLY.

STATE	Released	03/06/2024	DIMENSIONS ARE IN INCHES		VIKING PUMP, INC. A Unit of IDEX Corporation Cedar Falls, IA 50613 U.S.A. VIKINGPUMP.COM	THIS DRAWING IS THE PROPERTY OF VIKING PUMP, INC. AND IS PROPRIETARY IN GENERAL AND DETAIL. IT SHALL NOT BE COPIED OR ITS CONTENTS REVEALED TO OUTSIDE PARTIES WITHOUT THE WRITTEN CONSENT OF VIKING PUMP, INC.	<b>3D</b>	DWG. NO.	SHEET 1 OF 1	REV. A.1	
DRAWN	dalcom	07/10/2023						PROJECT: E330	LV-4565		
CHECKED	DTL	03/06/2024						WAS:			03/06/2024