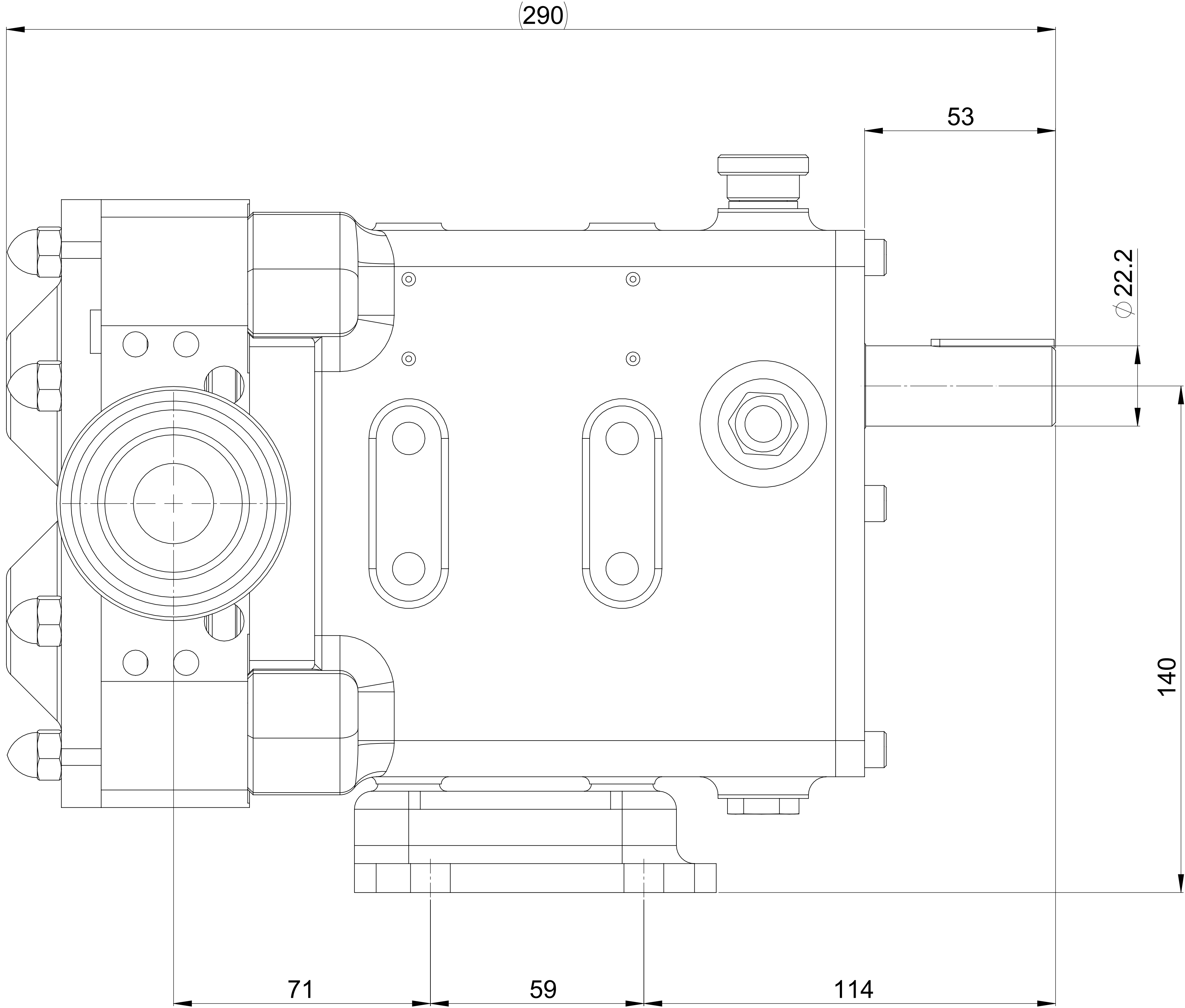
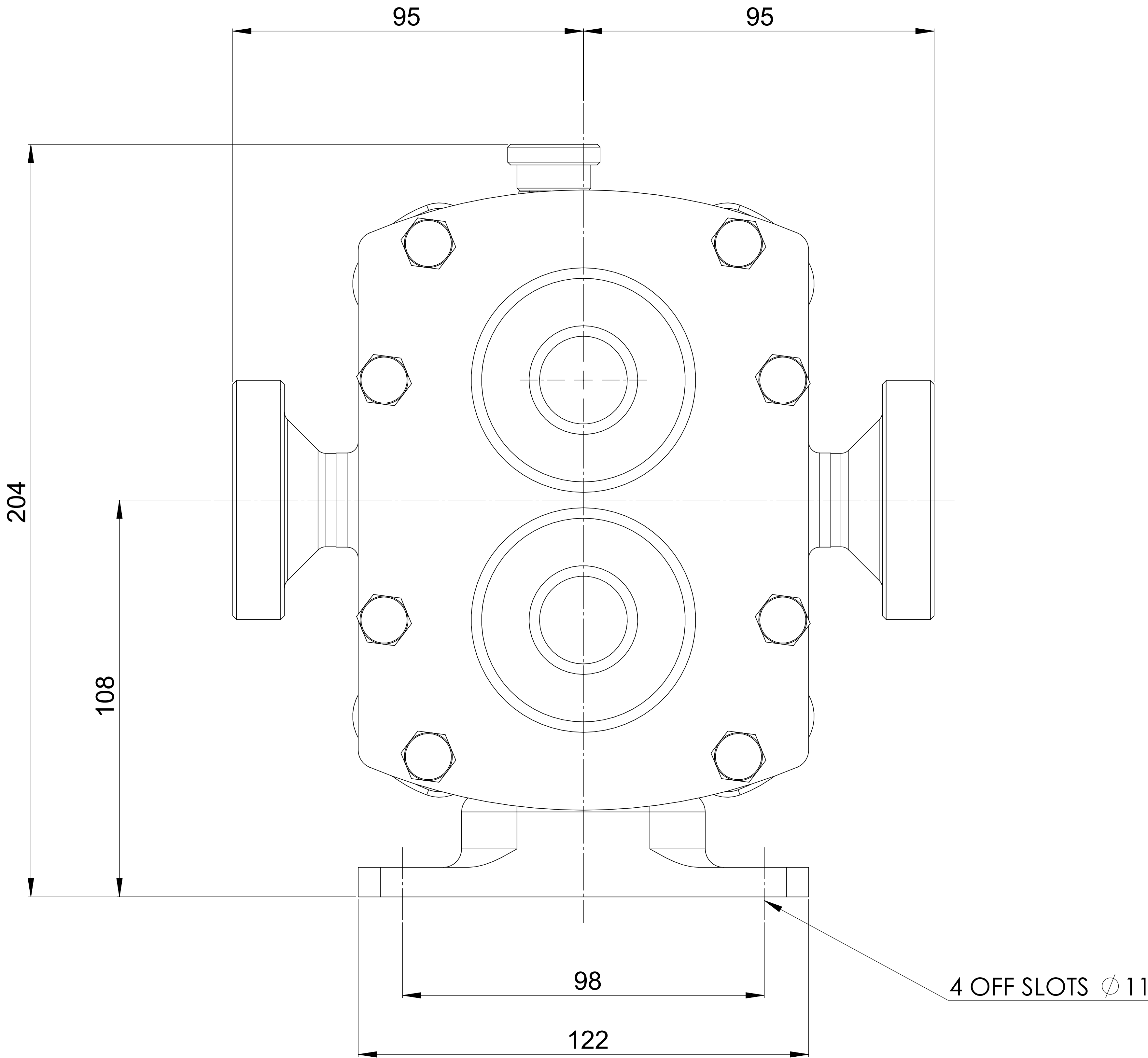
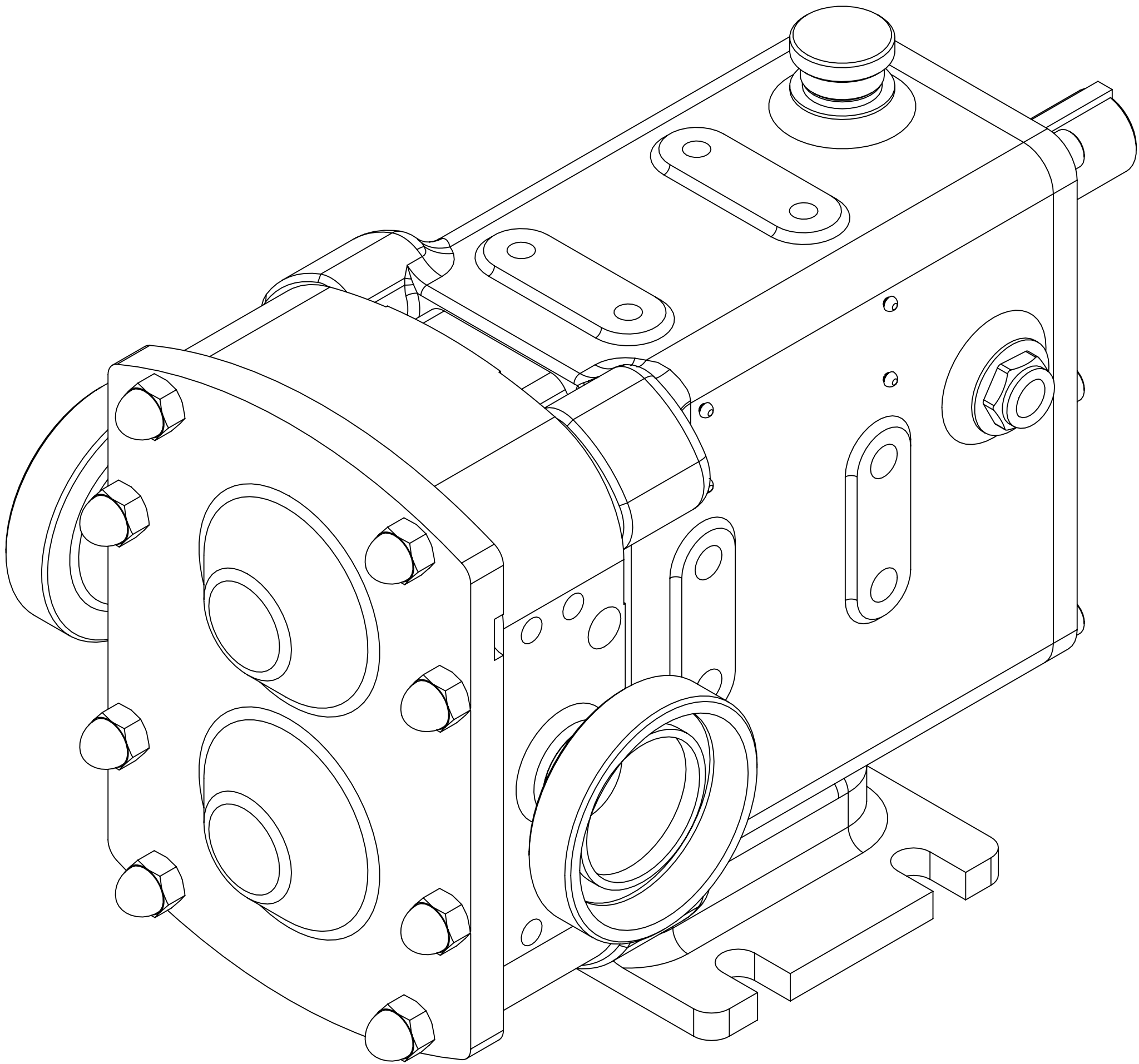


GENERAL ARRANGEMENT DETAILS


PUMP INFORMATION

| | |
|-------------------|----------------------------------|
| PUMP MODEL | REVOLUTION - TWIN WING R0150X/21 |
| INLET CONNECTION | 1.5" DIN 11851 Male |
| OUTLET CONNECTION | 1.5" DIN 11851 Male |
| SPECIAL FEATURES | NONE |
| | |

THIS IS NOT A CERTIFIED DRAWING, USE FOR GENERAL
INSTALLATION ONLY



| | | |
|---------------------------|-------|------------|
| UPDATED TO CURRENT FORMAT | B | 01/07/2022 |
| ISSUE | A | 11/08/2017 |
| AMENDMENT | ISSUE | DATE |

| | | | | | | |
|--|--|---|---|-------|---------|------------------------|
| VIKING PUMP[®] HYGIENIC HIGHFIELD INDUSTRIAL ESTATE, EASTBOURNE, EAST SUSSEX, BN23 6PT TEL: (+44) 1323 509211 | COPYRIGHT: THIS DRAWING IS THE SOLE PROPERTY OF VIKING PUMP HYGIENIC LTD. IT MUST NOT BE COPIED OR USED IN PART OR FULL WITHOUT PRIOR WRITTEN CONSENT. | UNLESS OTHERWISE STATED: ALL DIMENSIONS ± 2.50 ANGLES ±2.0° DO NOT SCALE THIS DRAWING REMOVE BURRS AND SHARP EDGES DIMENSIONS IN MILLIMETRES IF IN DOUBT ASK | PROJECTION | DRAWN | CHECKED | GENERAL ARRANGEMENT |
| | | |  | MR | IPJB | DRG. NO: GA3725 |
| | | | | | | |