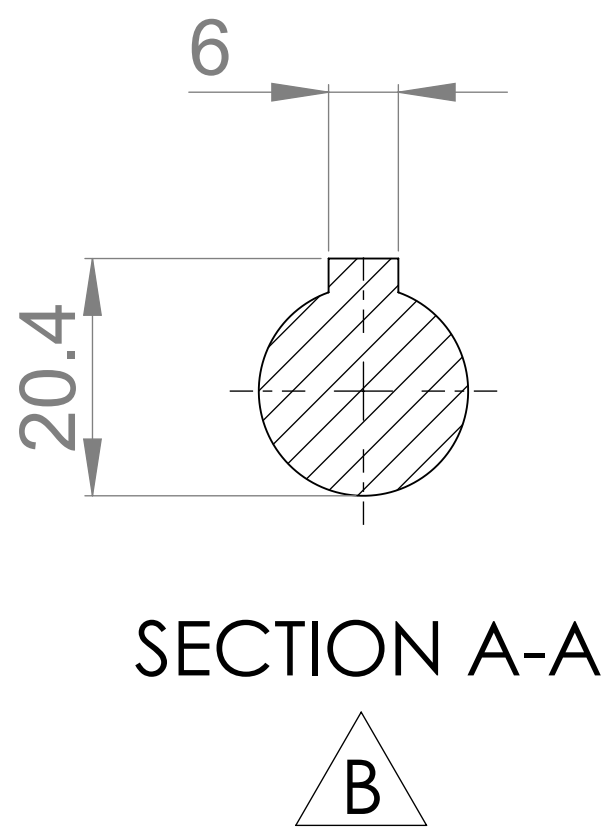
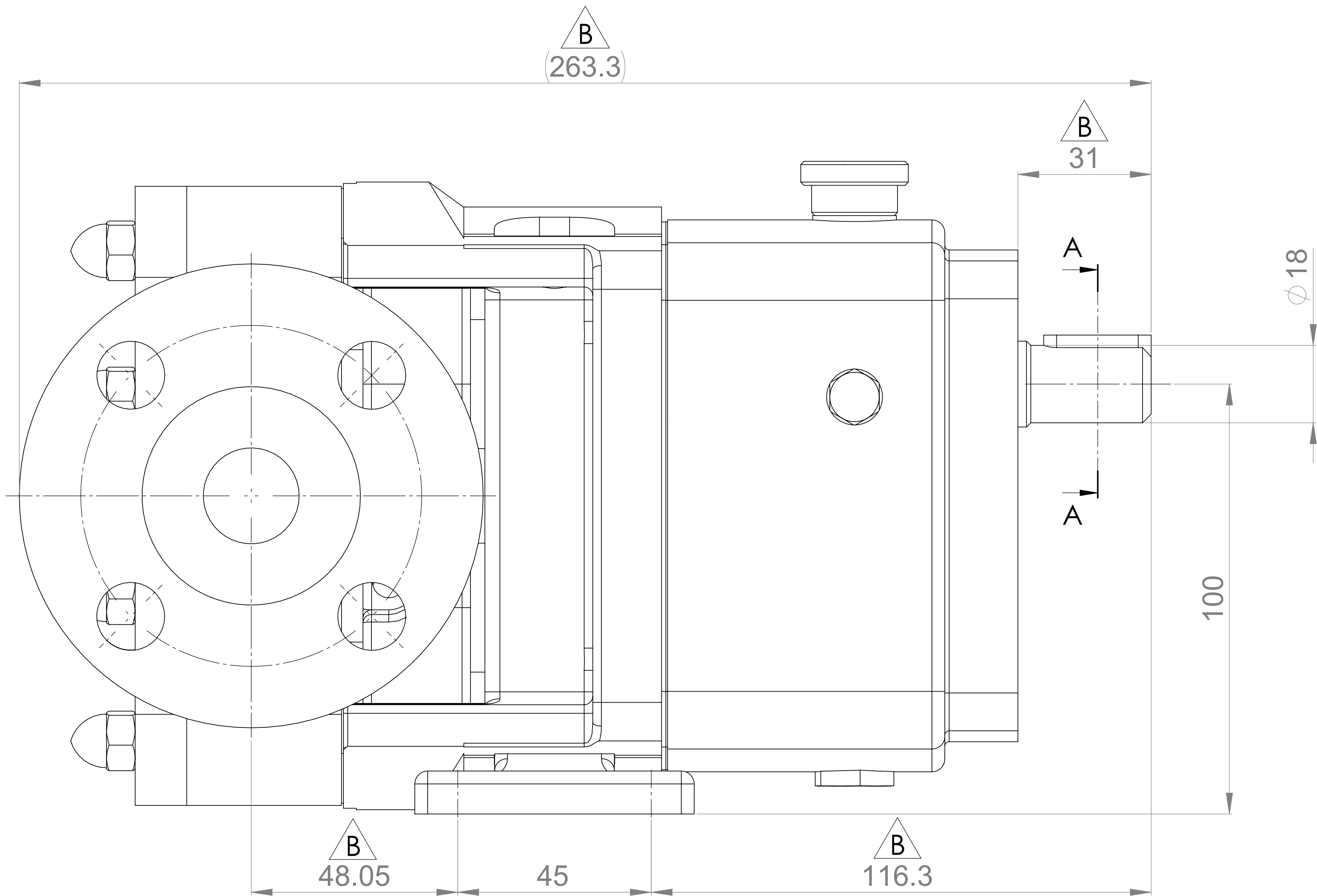
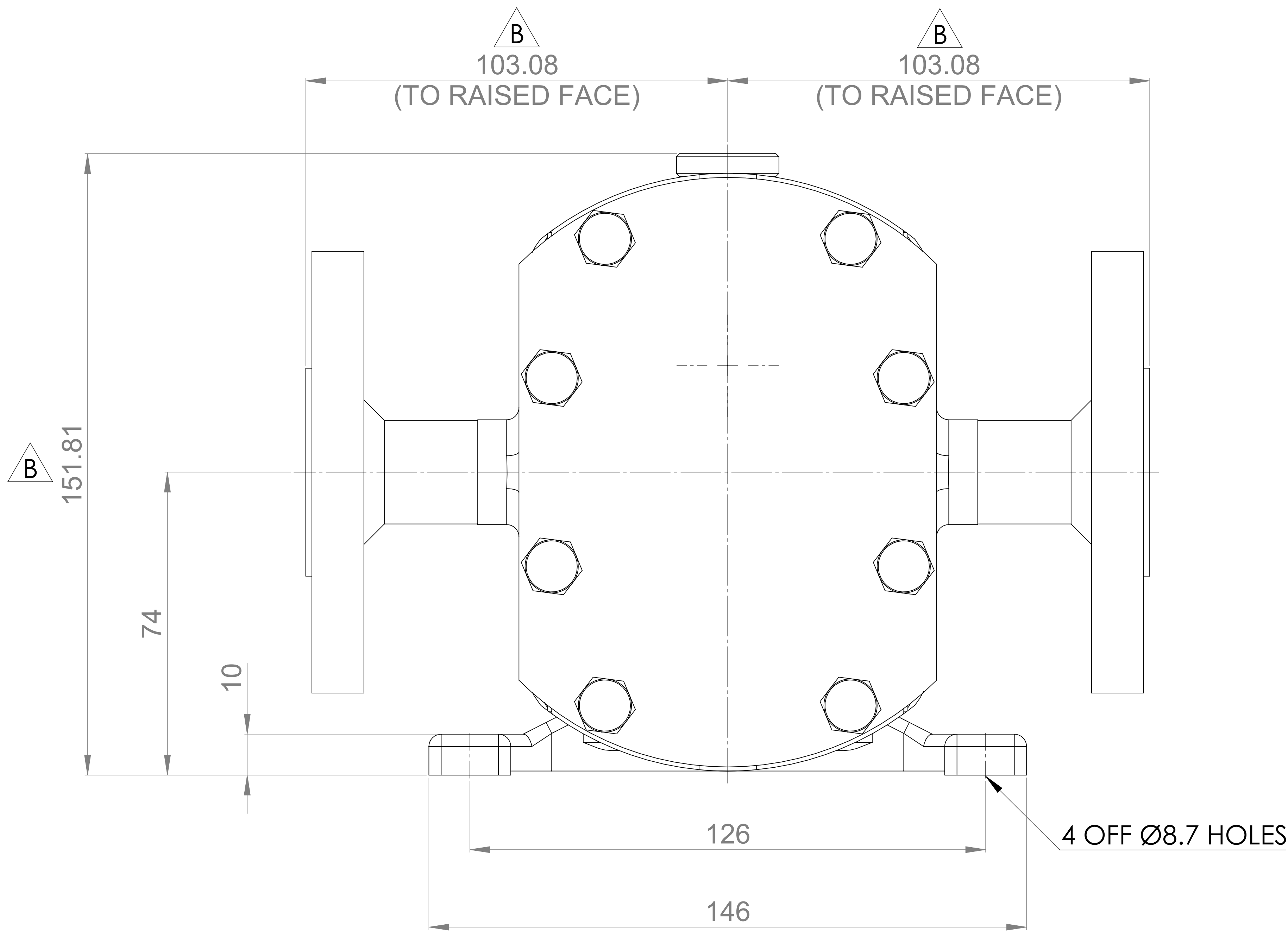
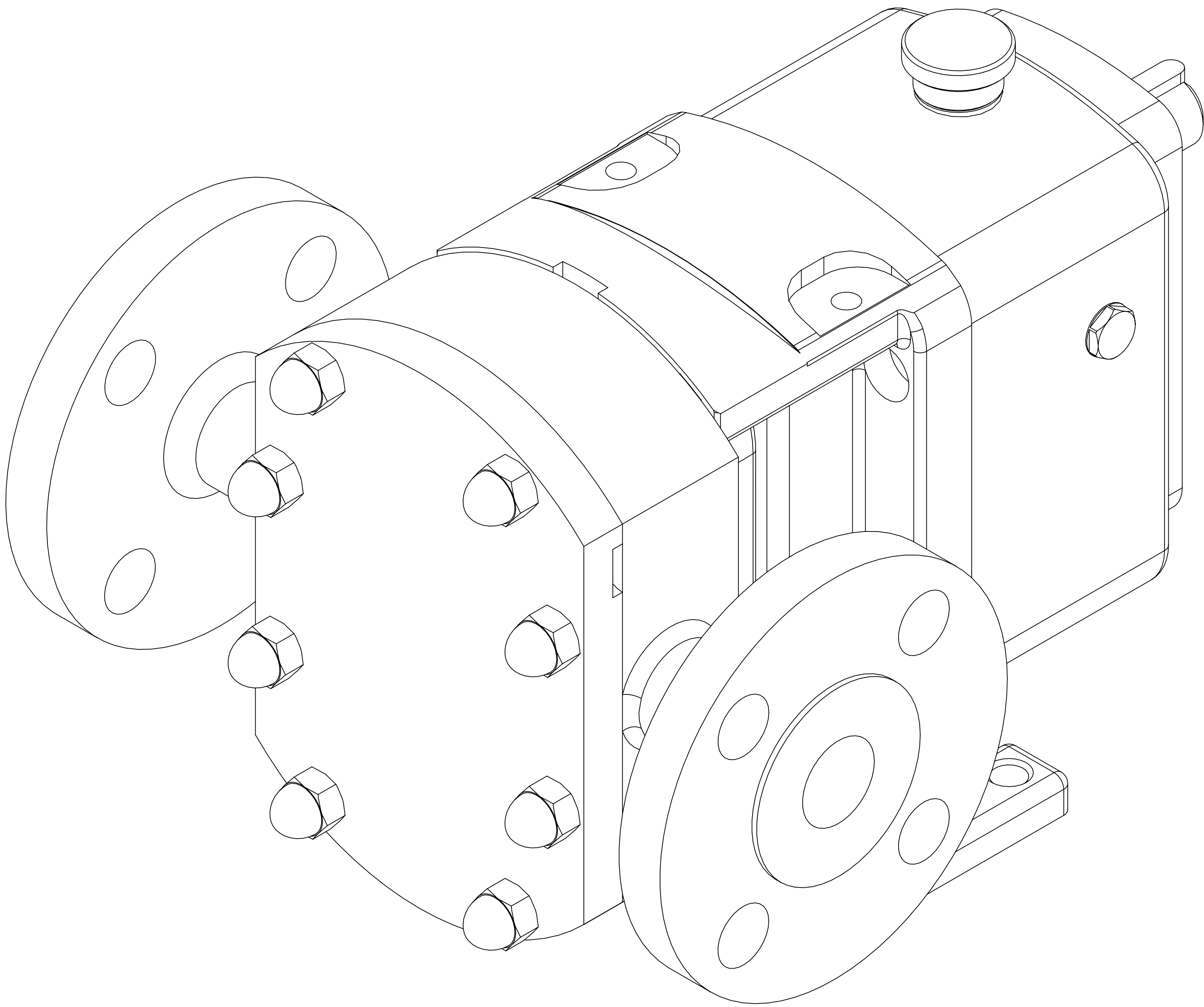


GENERAL ARRANGEMENT DETAILS

PUMP INFORMATION

| | |
|-------------------------|-----------------------|
| PUMP MODEL | CLASSIC+ CP10/0005/12 |
| LEFT/TOP CONNECTION | 1" ASA/ANSI 150 lb RF |
| RIGHT/BOTTOM CONNECTION | 1" ASA/ANSI 150 lb RF |
| DRIVE SHAFT POSITION | TOP SHAFT DRIVE |
| FRONT COVER ADDITIONS | STANDARD |
| ROTORCASE ADDITIONS | STANDARD |
| GEARBOX ADDITIONS | STANDARD |
| PUMP ADDITIONS | STANDARD |

THIS IS NOT A CERTIFIED DRAWING, USE FOR GENERAL
INSTALLATION ONLY



| | | |
|------------------------------|-------|------------|
| UPDATED FORMAT AND PRECISION | B | 15/10/2024 |
| ISSUED | A | 31/05/2019 |
| AMENDMENT | ISSUE | DATE |

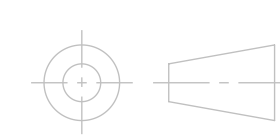


HIGHFIELD INDUSTRIAL ESTATE,
EASTBOURNE,
EAST SUSSEX, BN23 6PT
TEL: (+44) 1323 509211

COPYRIGHT:
THIS DRAWING IS THE SOLE
PROPERTY OF
VIKING PUMP HYGIENIC LTD.
IT MUST NOT BE COPIED OR USED
IN PART OR FULL WITHOUT PRIOR
WRITTEN CONSENT.

UNLESS OTHERWISE STATED:
ALL DIMENSIONS ± 2.50
ANGLES ±2.0°
DO NOT SCALE THIS DRAWING
REMOVE BURRS AND SHARP EDGES
DIMENSIONS IN MILLIMETRES
IF IN DOUBT ASK

PROJECTION



DRAWN

CHECKED

DSB IPJB

TITLE:

GENERAL ARRANGEMENT

DRG. NO:

GA4182