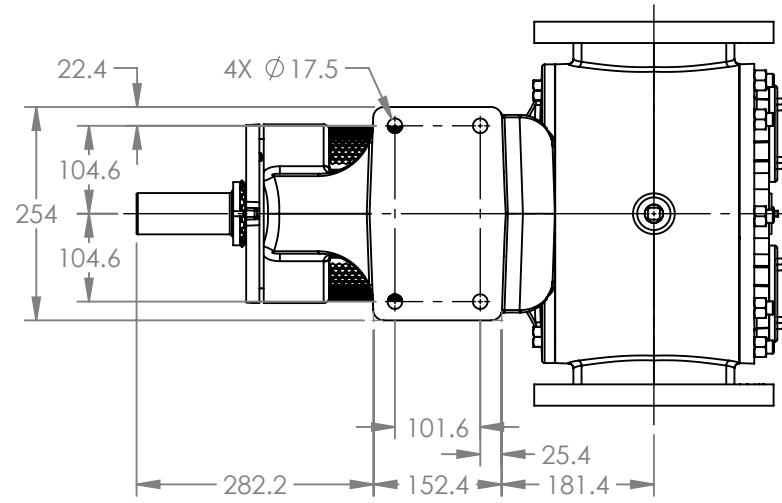
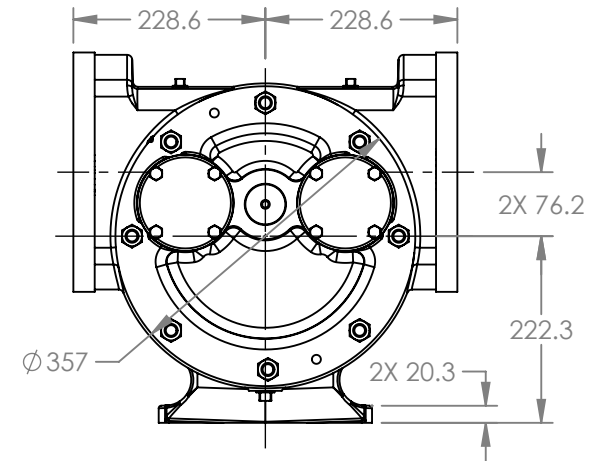
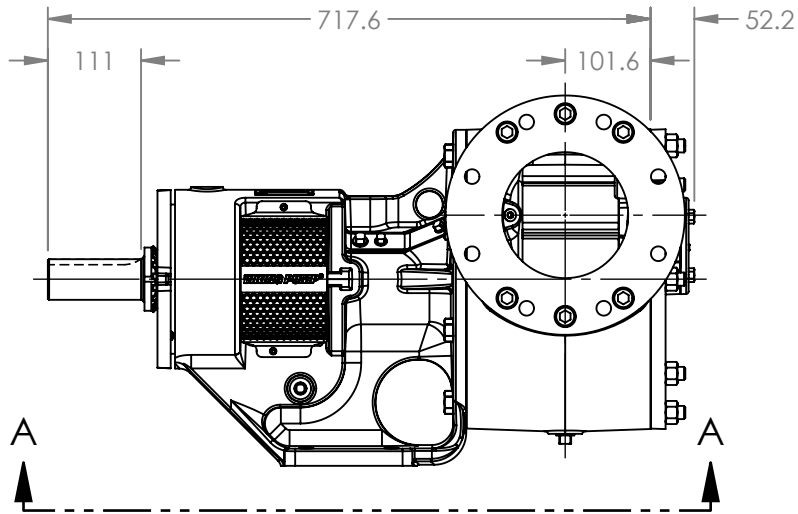


PORTS: 2X FLANGES
STUDS AND NUTS (NOT SHOWN)
SUITABLE FOR USE WITH
DIN 150 PN16 FLANGES



VIEW A-A



MODELS WITH OPTIONAL FLANGED PORTS:
QS124C, QS1124C, QS4124C, QS4624C

NOTES:
1. ALL DIMENSIONS ARE FOR REFERENCE ONLY.

STATE	Released	02/09/2026
DRAWN	DLende	Jan 30 2026 00:00 A
CHECKED	AE	02/09/2026

DIMENSIONS ARE IN
MILLIMETERS
PROJECT E399
WAS:



VIKING PUMP, INC.
A Unit of IDEX Corporation
Cedar Falls, IA, 50613 U.S.A.
VIKINGPUMP.COM

THIS DRAWING IS THE PROPERTY OF
VIKING PUMP, INC. AND IS PROPRIETARY
IN GENERAL AND DETAIL. IT SHALL NOT BE
COPIED OR ITS CONTENTS REVEALED TO
OUTSIDE PARTIES WITHOUT THE WRITTEN
CONSENT OF VIKING PUMP, INC.

3D

DWG. NO.
QV-2388

SHEET 1 OF 1

REV. A.0

02/09/2026