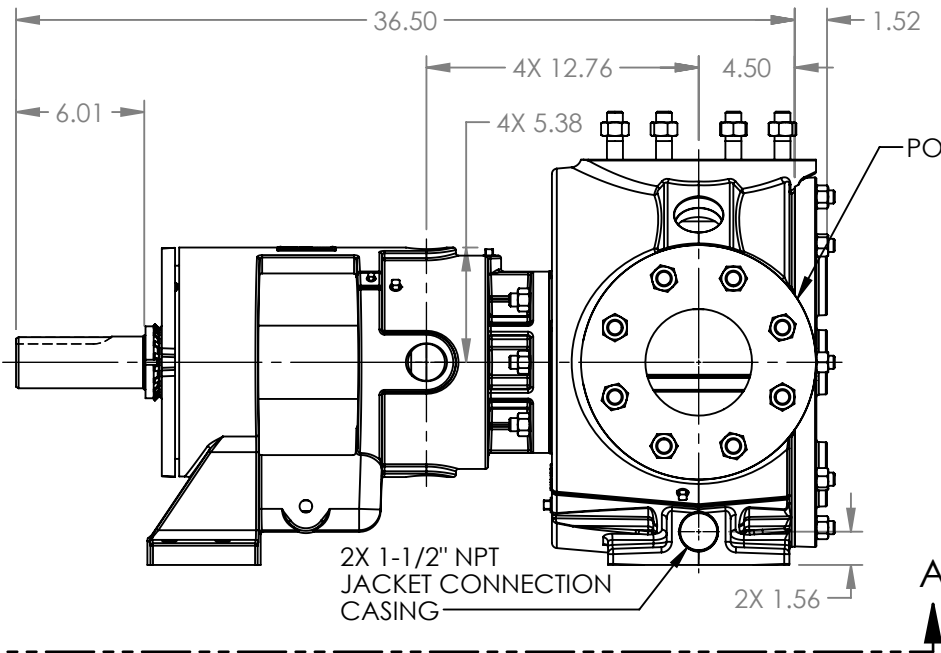
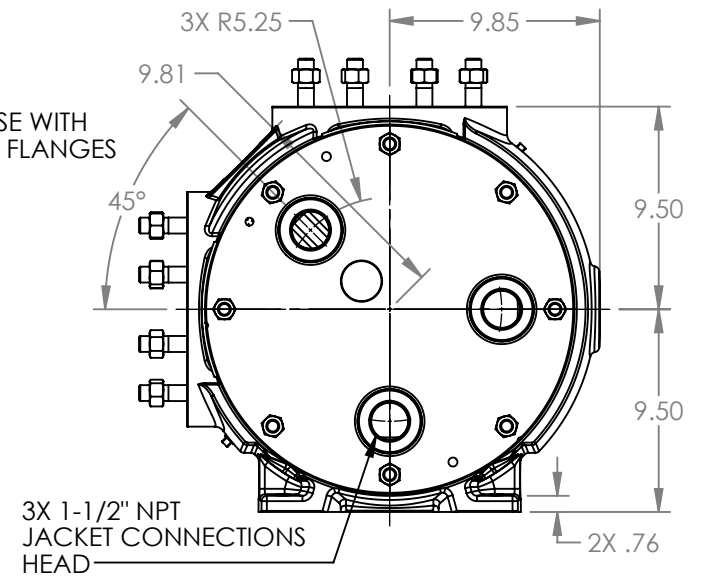


VIEW A-A



PORTS: 2X 5" FLANGES
SUITABLE FOR USE WITH
CLASS 125 ANSI FLANGES



NOTES:

1. ALL DIMENSIONS ARE FOR REFERENCE ONLY.

STANDARD MODELS: N324A, N1324A, N4324A

STATE	Released	07/22/2021	DIMENSIONS ARE IN INCHES
DRAWN	GDJohnson	5/21/2021	PROJECT:E355
CHECKED	GDJ	07/22/2021	WAS:

VIKING PUMP

VIKING PUMP, INC.
A Unit of IDEX Corporation
Cedar Falls, IA 50613 U.S.A.
VIKINGPUMP.COM

THIS DRAWING IS THE PROPERTY OF VIKING PUMP, INC. AND IS PROPRIETARY IN GENERAL AND DETAIL. IT SHALL NOT BE COPIED OR ITS CONTENTS REVEALED TO OUTSIDE PARTIES WITHOUT THE WRITTEN CONSENT OF VIKING PUMP, INC.

3D

DWG. NO.
NV-656

SHEET 1 OF 1

REV. D.1

07/22/2021