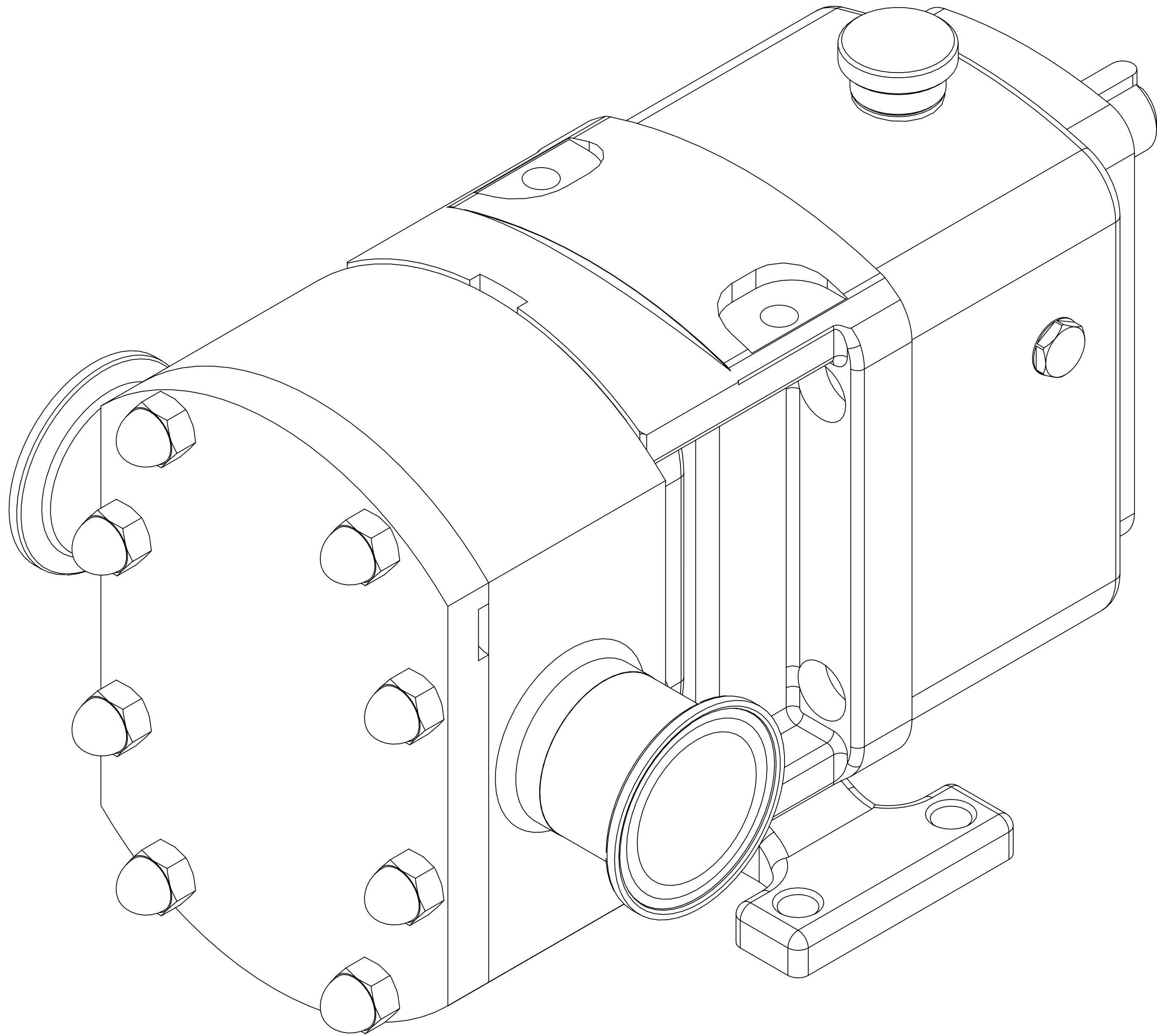


GENERAL ARRANGEMENT DETAILS

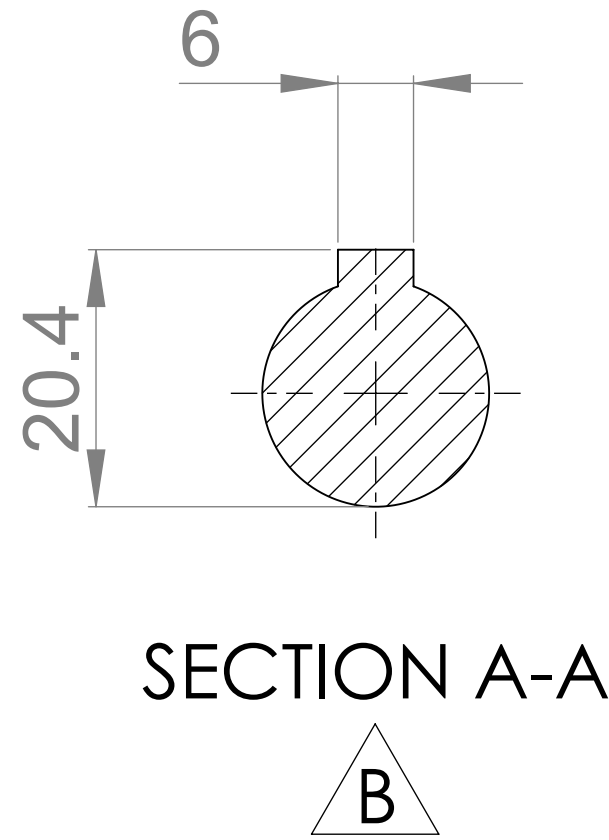
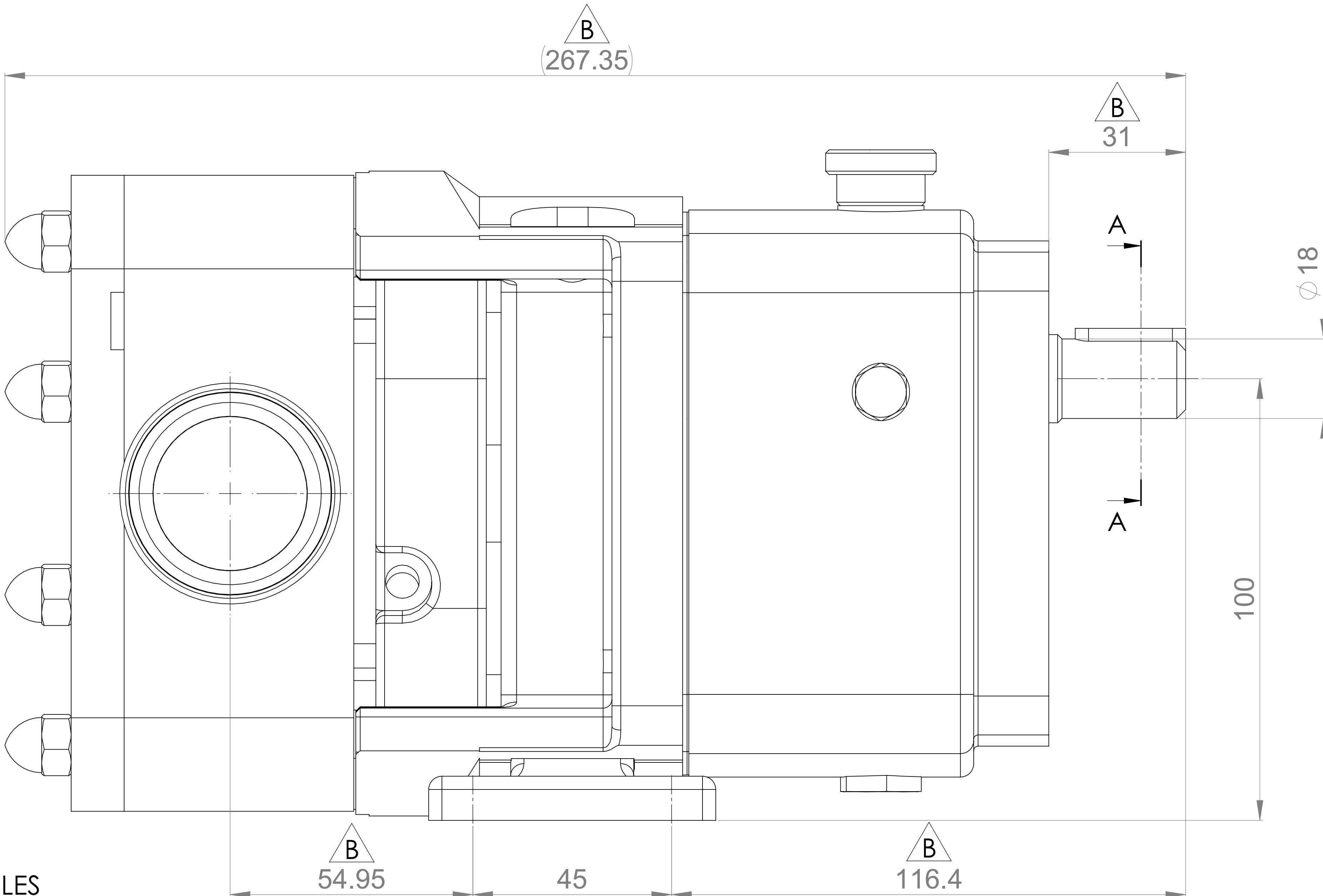
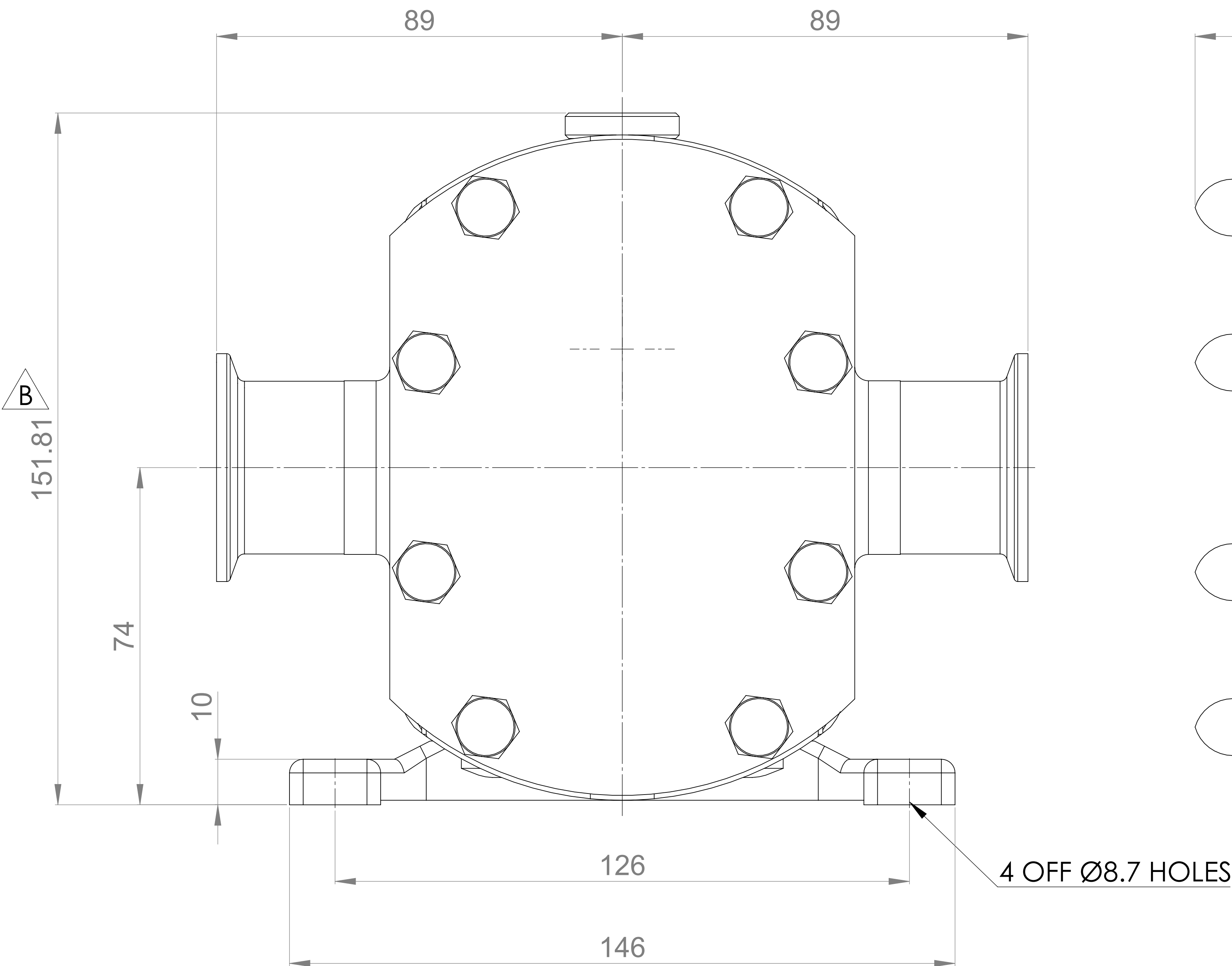
PUMP INFORMATION

PUMP MODEL	MULTIPUMP MP10/0008/08
LEFT/TOP CONNECTION	1.5" TRI-CLAMP
RIGHT/BOTTOM CONNECTION	1.5" TRI-CLAMP
DRIVE SHAFT POSITION	TOP SHAFT DRIVE
FRONT COVER ADDITIONS	STANDARD
ROTORCASE ADDITIONS	STANDARD
GEARBOX ADDITIONS	STANDARD
PUMP ADDITIONS	STANDARD

THIS IS NOT A CERTIFIED DRAWING, USE FOR GENERAL  
INSTALLATION ONLY



B



SECTION A-A

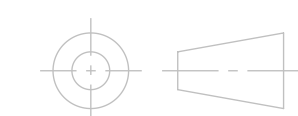
UPDATED FORMAT AND PRECISION	B	26/09/2024
ISSUED	A	14/05/2020
AMENDMENT	ISSUE	DATE

**VIKING PUMP**  
HYGIENIC  
HIGHFIELD INDUSTRIAL ESTATE,  
EAST SUSSEX, BN23 6PT  
TEL: (+44) 1323 509211

**COPYRIGHT:**  
THIS DRAWING IS THE SOLE  
PROPERTY OF  
**VIKING PUMP HYGIENIC LTD.**  
IT MUST NOT BE COPIED OR USED  
IN PART OR FULL WITHOUT PRIOR  
WRITTEN CONSENT.

UNLESS OTHERWISE STATED:  
ALL DIMENSIONS ± 2.50  
ANGLES ±2.0°  
DO NOT SCALE THIS DRAWING  
REMOVE BURRS AND SHARP EDGES  
DIMENSIONS IN MILLIMETRES  
**IF IN DOUBT ASK**

PROJECTION



DRAWN

CHECKED

DSB

KCB

TITLE:

GENERAL ARRANGEMENT

DRG. NO:

GA4399