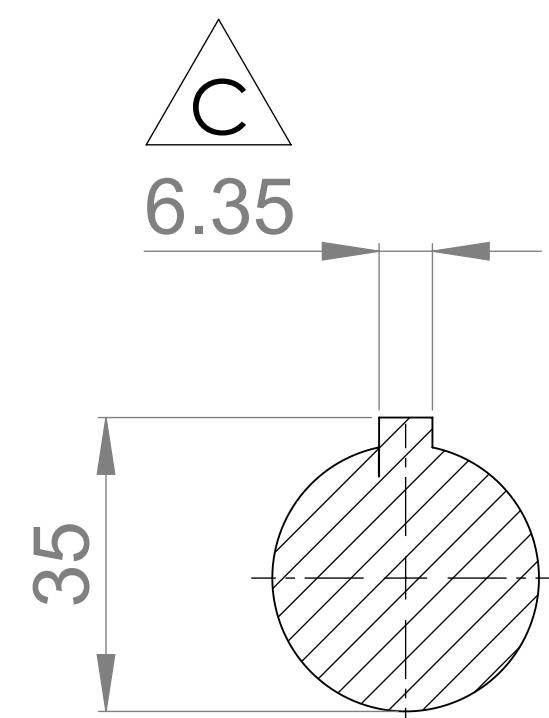
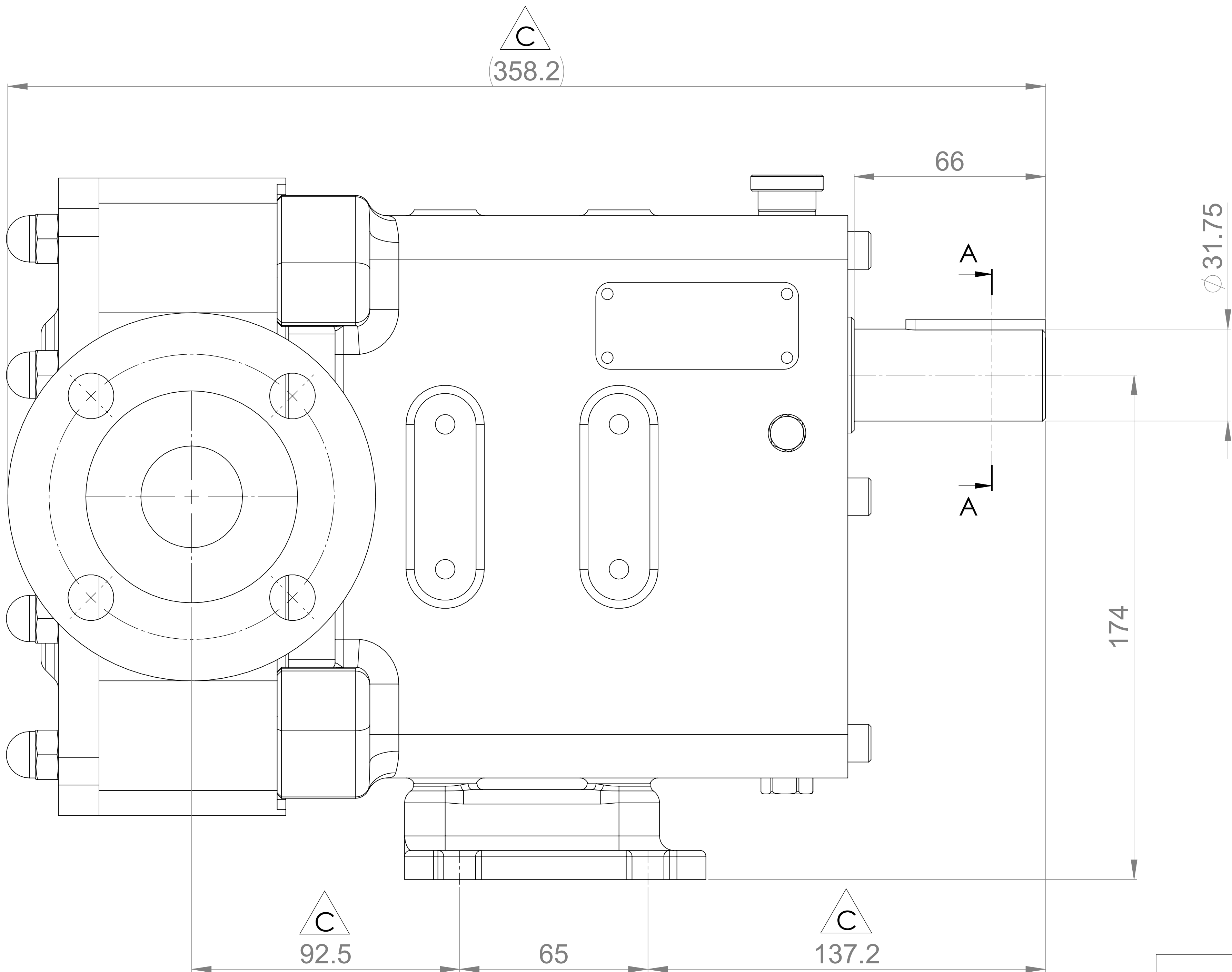
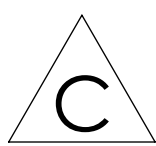
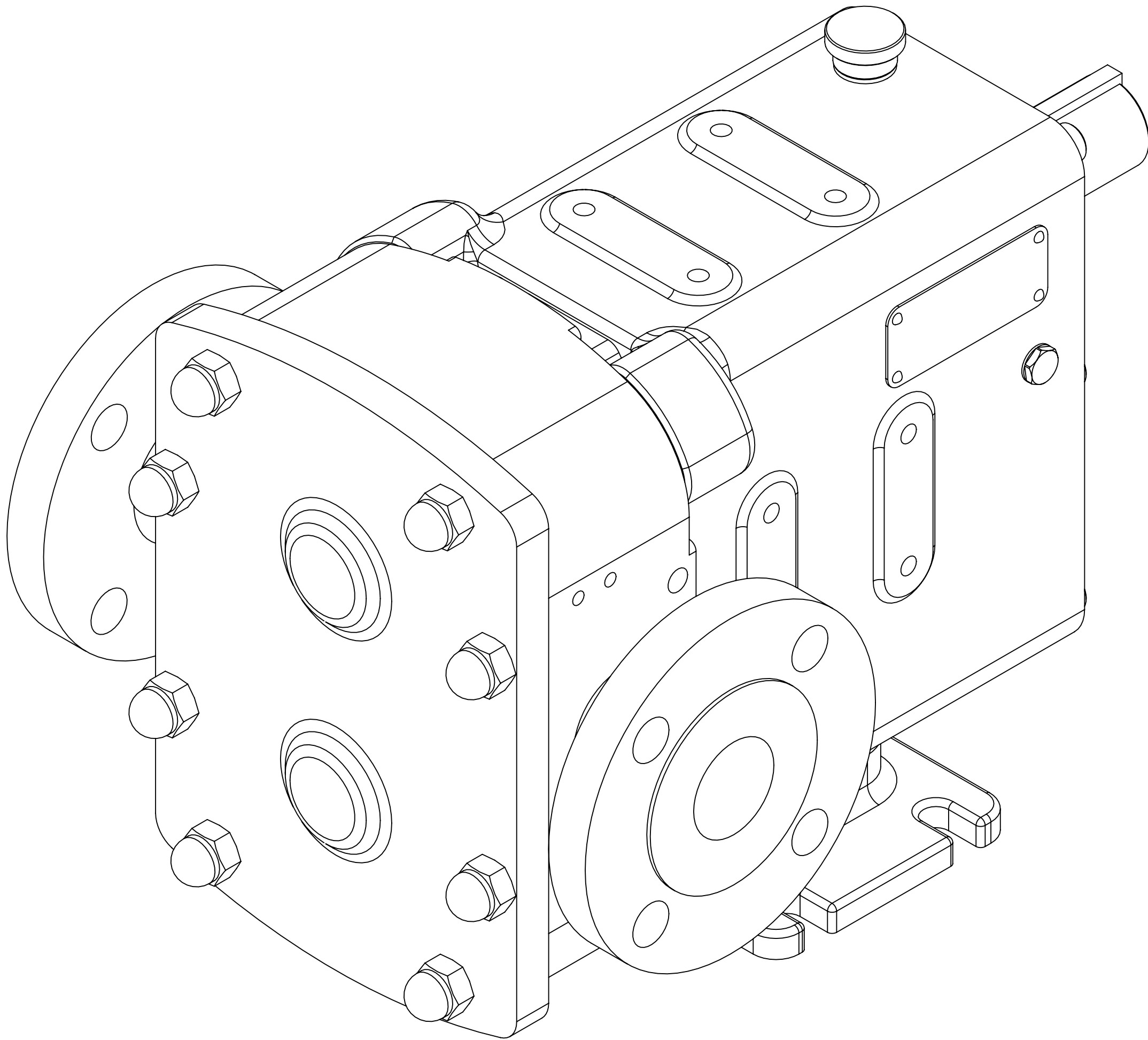


GENERAL ARRANGEMENT DETAILS

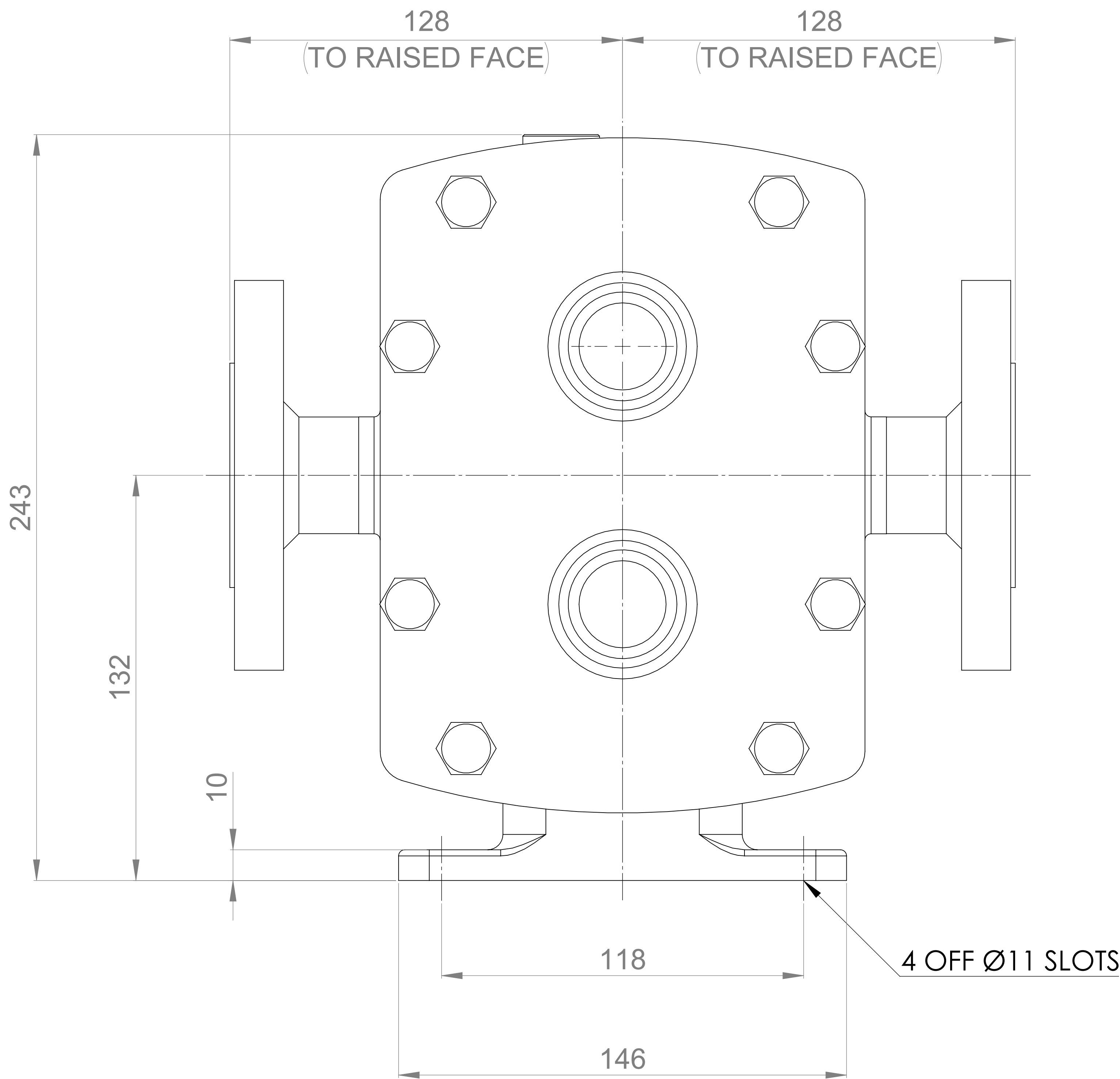
PUMP INFORMATION

PUMP MODEL	REVOLUTION - TWIN WING R0300X/17
LEFT/TOP CONNECTION	1.5" ASA 150 lb RF
RIGHT/BOTTOM CONNECTION	1.5" ASA 150 lb RF
DRIVE SHAFT POSITION	TOP SHAFT DRIVE
FRONT COVER ADDITIONS	STANDARD
ROTORCASE ADDITIONS	STANDARD
GEARBOX ADDITIONS	STANDARD
PUMP ADDITIONS	STANDARD

THIS IS NOT A CERTIFIED DRAWING, USE FOR GENERAL  
INSTALLATION ONLY



SECTION A-A



UPDATED FORMAT AND PRECISION	C	02/10/2024
ADDED KEYWAY DETAILS	B	21/02/2022
ISSUED	A	22/06/2020
AMENDMENT	ISSUE	DATE



HIGHFIELD INDUSTRIAL ESTATE,  
EASTBOURNE,  
EAST SUSSEX, BN23 6PT  
TEL: (+44) 1323 509211

COPYRIGHT:

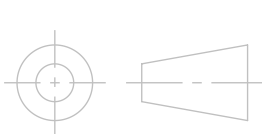
THIS DRAWING IS THE SOLE  
PROPERTY OF  
VIKING PUMP HYGIENIC LTD.  
IT MUST NOT BE COPIED OR USED  
IN PART OR FULL WITHOUT PRIOR  
WRITTEN CONSENT.

UNLESS OTHERWISE STATED:

ALL DIMENSIONS ± 2.50  
ANGLES ±2.0°  
DO NOT SCALE THIS DRAWING  
REMOVE BURRS AND SHARP EDGES  
DIMENSIONS IN MILLIMETRES

IF IN DOUBT ASK

PROJECTION



DRAWN

DSB

CHECKED

IPJB

TITLE:

GENERAL ARRANGEMENT

DRG. NO:

GA4427