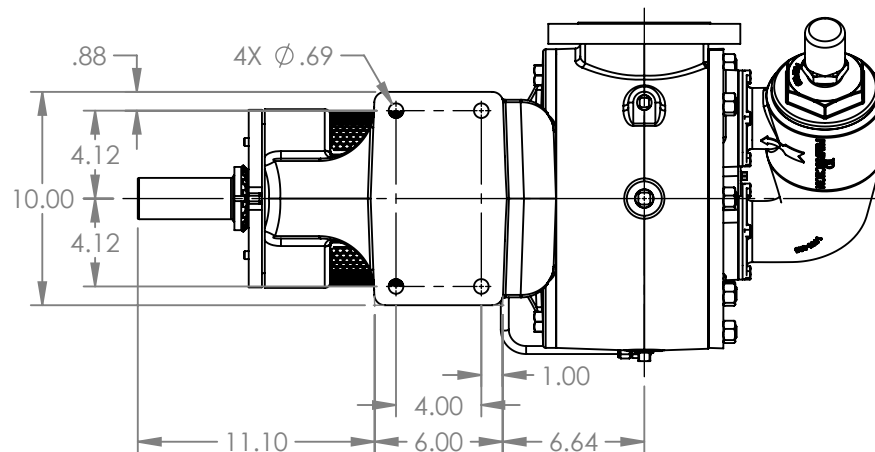
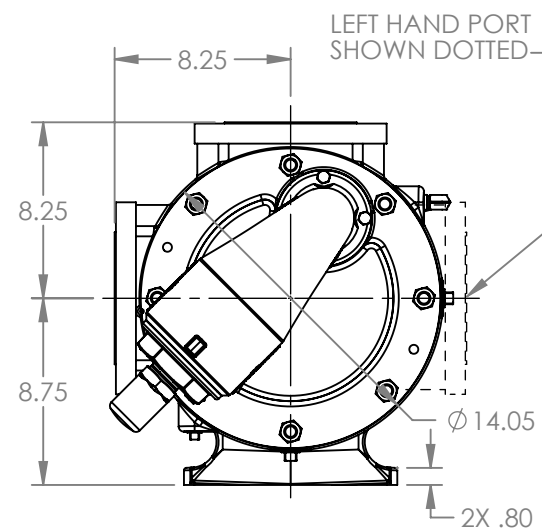
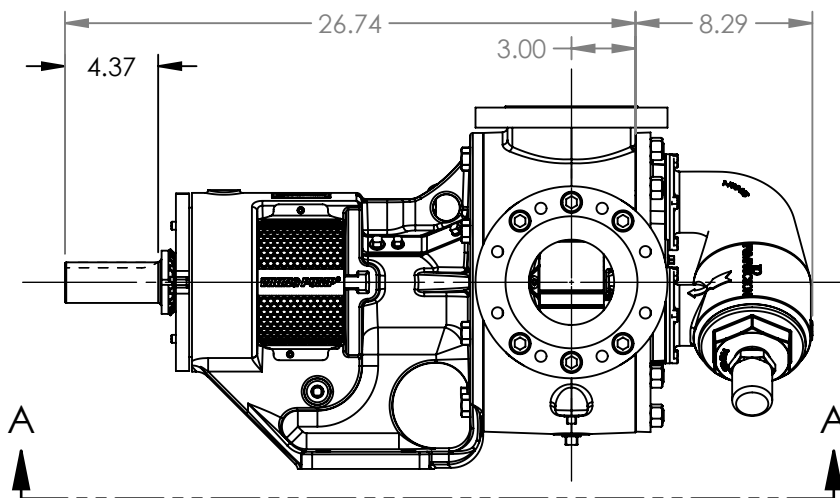


PORTS: 2X 4" RAISED FACE FLANGES
STUDS AND NUTS (NOT SHOWN)
SUITABLE FOR USE WITH
CLASS 150 ANSI FLANGES
(123C, 4123C, 127C, 1127C, 4127C)



VIEW A-A



STANDARD MODELS:
Q123C, Q4123C, Q127C, Q1127C, Q4127C

NOTES:
1. ALL DIMENSIONS ARE FOR REFERENCE ONLY.

STATE	Released	04/16/2024
DRAWN	dalcom	06/09/2023
CHECKED	BA	04/16/2024

DIMENSIONS ARE IN INCHES	
PROJECT:	E330
WAS:	

VIKING PUMP
VIKING PUMP, INC.
A Unit of IDEX Corporation
Cedar Falls, IA 50613 U.S.A.
VIKINGPUMP.COM

THIS DRAWING IS THE PROPERTY OF VIKING PUMP, INC. AND IS PROPRIETARY IN GENERAL AND DETAIL. IT SHALL NOT BE COPIED OR ITS CONTENTS REVEALED TO OUTSIDE PARTIES WITHOUT THE WRITTEN CONSENT OF VIKING PUMP, INC.

3D

DWG. NO.
QV-2205

SHEET 1 OF 1

REV. A.2
04/16/2024