

VIKING PUMP

A Unit of IDEX Corporation

VIKING PUMP, INC. • A Unit of IDEX Corporation

406 State Street • Cedar Falls, IA 50613

Phone: 319.266.1741 • Fax: 319.273.8157

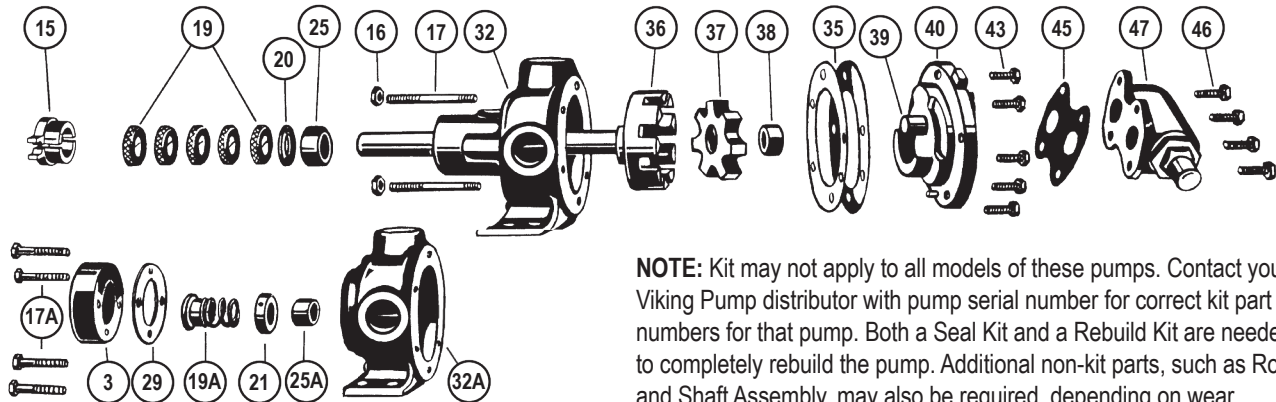
Exploded Diagram for Series 32 (packed) and 432 (mechanical seal), Sizes H and HL

Includes 432-X Models (UL Listed for Fuel Oil)

Plus (not pictured):

Series 34 (packed) and 434 (mechanical seal) Jacketed Pumps,
Size HL

Exploded diagram representative of 32/432 Series. For other series, see the technical service manual (TSM) for your specific model.
List of the TSMs below.



NOTE: Kit may not apply to all models of these pumps. Contact your Viking Pump distributor with pump serial number for correct kit part numbers for that pump. Both a Seal Kit and a Rebuild Kit are needed to completely rebuild the pump. Additional non-kit parts, such as Rotor and Shaft Assembly, may also be required, depending on wear.

ITEM	PART (may not exactly match parts list descriptions)	PART INCLUDED IN:		
		32 SERIES SEAL KIT	432 SERIES SEAL KIT	REBUILD KIT
15	Two-Piece Packing Gland (32 Series Only)	✓		
19	Packing (32 Series Only - 5 rings required)	✓		
20	Packing Retainer Washer (32 Series Only)	✓		
25	Casing Bushing (32 Series Only)			✓
16	Packing Gland Nuts (32 Series Only)			
17	Packing Gland Studs (32 Series Only)			
32	Casing and Bushing Assembly (32 Series Only)			
36	Rotor and Shaft Assembly			
37	Idler & Bushing Assembly			✓
38	Idler Bushing (included in Idler & Bushing Assy, 37)			
35	Head Gaskets	✓	✓	
39	Idler Pin (Included in Head & Idler Pin Assy, 40)			

ITEM	PART (may not exactly match parts list descriptions)	PART INCLUDED IN:		
		32 SERIES SEAL KIT	432 SERIES SEAL KIT	REBUILD KIT
40	Head and Idler Pin Assembly			✓
43	Capscrews for Head			✓
45	Relief Valve Gasket ②	✓	✓	
47	Relief Valve (not included on non-RV pumps)			
46	Capscrews for Valve ②			✓
17A	Capscrews for End Cap (432 Series Only)			✓
3	End Cap (432 Series Only)		✓	
29	Gasket for End Cap (432 Series Only)		✓	
19A	Mechanical Seal Complete (432 Series Only - Buna, Viton® or PTFE) ①		✓	
21	Set Collar with Setscrew (432 Series Only)		✓	
25A	Casing Bushing (432 Series Only)			
32A	Casing & Bushing Assembly (432 Series Only)			

① Mechanical seal elastomers in this kit are specified in seal kit description.

② Seal Kit include parts for Relief Valve models. Discard extra parts.

Use Seal Lubricant in 34 Series Seal Kits for installing mechanical seal.

Important safety information and rebuild instructions are found in the Technical Service Manual.

Download current Technical Service Manuals from www.vikingpump.com:

TSM 000 - Installation, Startup, Troubleshooting, Preventative Maintenance, Do's & Don'ts

TSM 312 - General Purpose Pumps, Series 32 and 432, Sizes G-N

TSM 430 - Jacketed Asphalt Pumps, Series 34 and 434, Sizes HL, KK, LQ, Q, M, N