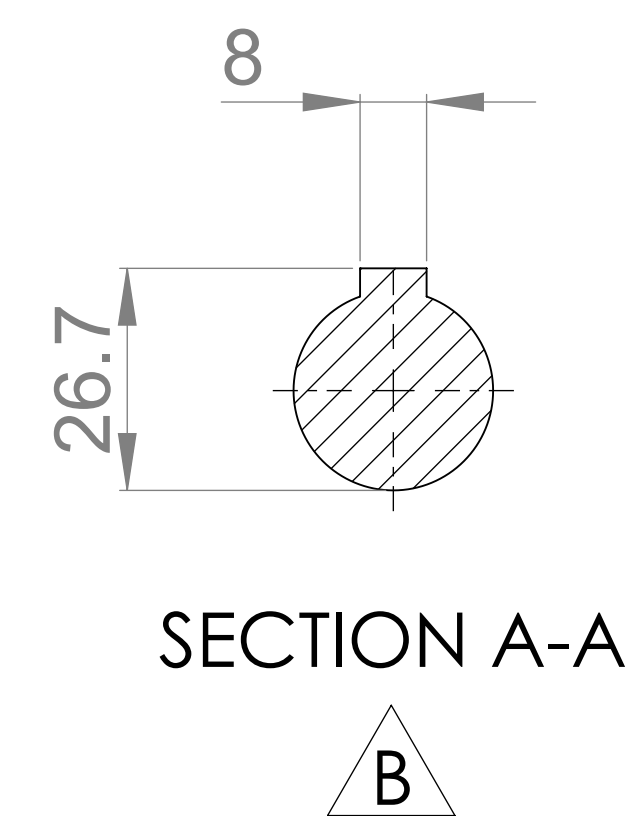
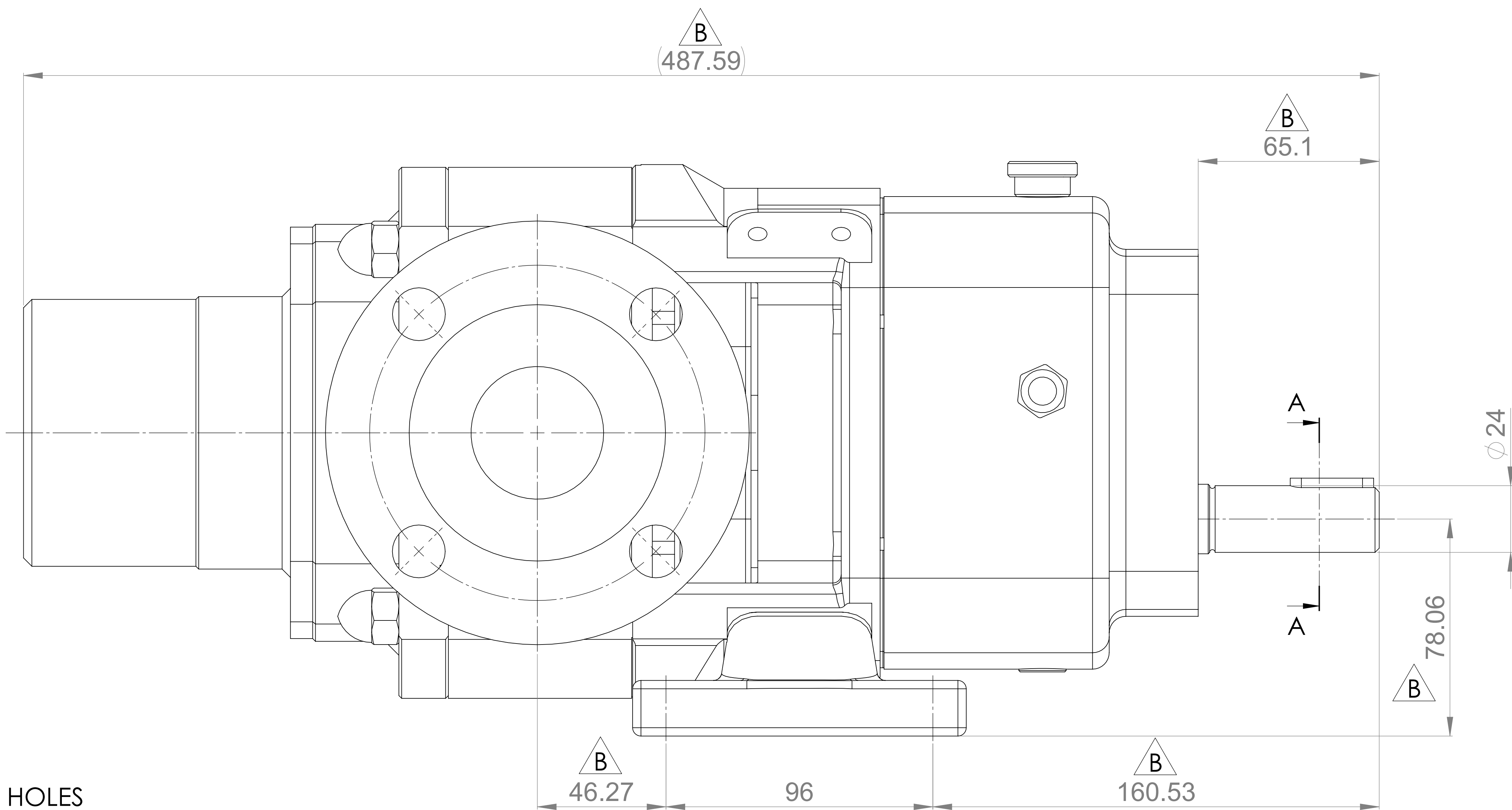
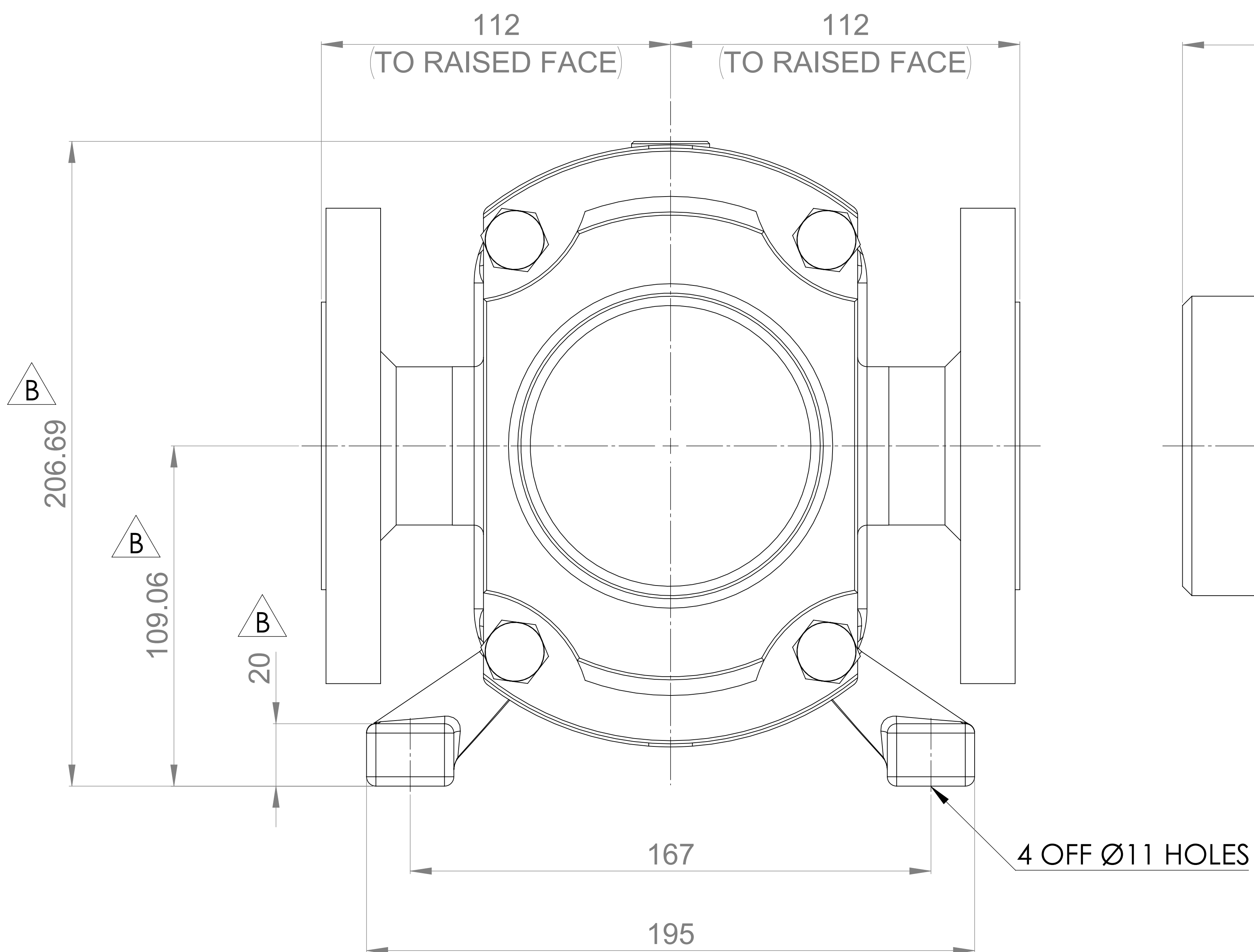
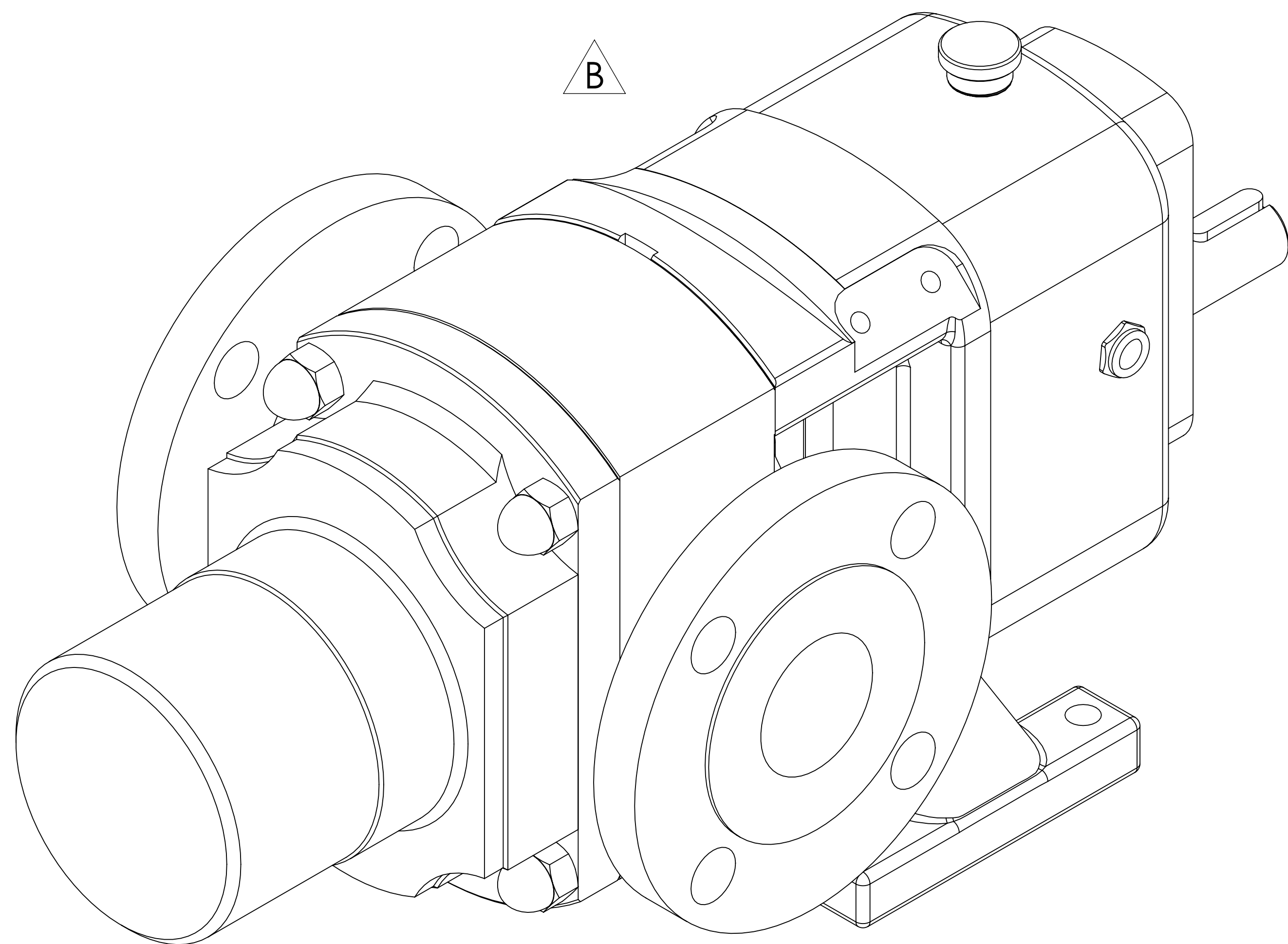



PUMP INFORMATION

PUMP MODEL	CLASSIC+ CP20/0031/07
LEFT/TOP CONNECTION	2" ASA/ANSI 150 lb RF
RIGHT/BOTTOM CONNECTION	2" ASA/ANSI 150 lb RF
DRIVE SHAFT POSITION	BOTTOM SHAFT DRIVE
FRONT COVER ADDITIONS	SPRING PRV
ROTORCASE ADDITIONS	STANDARD
GEARBOX ADDITIONS	STANDARD
PUMP ADDITIONS	STANDARD

THIS IS NOT A CERTIFIED DRAWING, USE FOR GENERAL
INSTALLATION ONLY



UPDATED FORMAT AND PRECISION	B	16/10/2024
ISSUED	A	30/10/2019
AMENDMENT	ISSUE	DATE

<div><div><div>VIKING PUMP</div><div>HYGIENIC</div></div><div>HIGHFIELD INDUSTRIAL ESTATE, SUSSEX TR1 EAST SUSSEX, BN23 6PT TEL: (+44) 1323 509211</div></div>	<div><div><div>COPYRIGHT:</div><div>THIS DRAWING IS THE SOLE PROPERTY OF VIKING PUMP HYGIENIC LTD. IT MUST NOT BE COPIED OR USED IN PART OR FULL WITHOUT PRIOR WRITTEN CONSENT.</div></div></div>	<div><div><div>UNLESS OTHERWISE STATED:</div><div>ALL DIMENSIONS ± 2.50 ANGLES ±2.0° DO NOT SCALE THIS DRAWING REMOVE BURRS AND SHARP EDGES DIMENSIONS IN MILLIMETRES</div></div><div>IF IN DOUBT ASK</div></div>	<div><div>PROJECTION</div><div></div></div>	<div><div>DRAWN</div><div>KCB</div></div>	<div><div>CHECKED</div><div>MJ</div></div>	<div><div>TITLE:</div><div>GENERAL ARRANGEMENT</div></div> <div><div>DRG. NO:</div><div>GA4271</div></div>