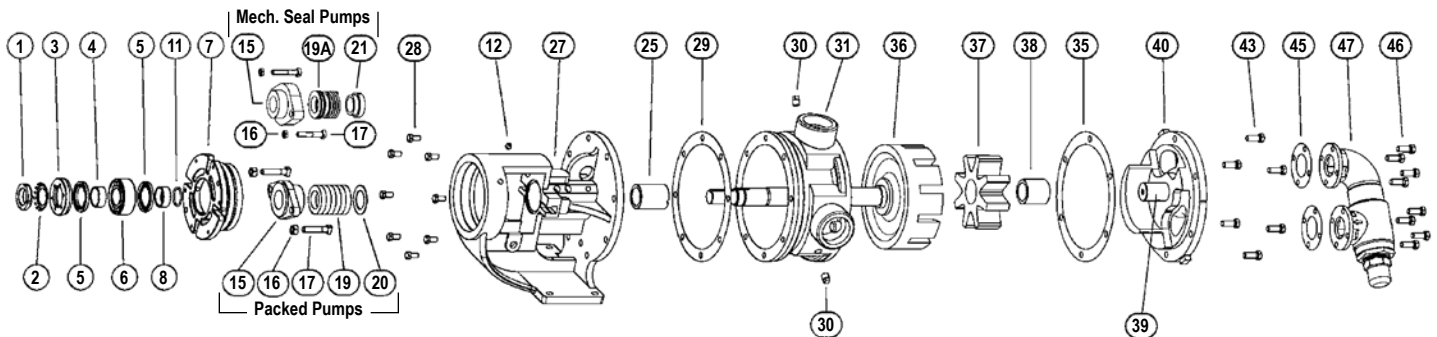


Exploded Diagram for 123A Series™, 4123A Series™, 124A Series™, 4124A Series™, 126A Series™, 4126A Series™, 127A Series™, 4127A Series™, 123C Series™, 4123C Series™, 223C Series™, 4223C Series™, 127C Series™, 4127C Series™, 227C Series™, 4227C Series™
Sizes G, H, HL, AK, AL, K, KK, L, LQ, LL, LS, Q, QS & M Seal Kits and Rebuild Kits

Rebuild Kit Only Applicable to Above PLUS (not pictured): Series 223A Series™, 4223A Series™, 224A Series™, 4224A Series™, 4124B Series™, 4224B Series™, 226A Series™, 4226A Series™, 227A Series™, 4227A Series™, 724 Series™, 4724 Series™, 4624B Series™, 124E Series™

Exploded diagram representative of 124A Series™ and 4124A Series™. For other series, see the Technical Service Manual (TSM) for your specific model. List of the TSMs below.



NOTE: Kit may not apply to all models of these pumps. Contact your Viking Pump distributor with pump serial number for correct kit part numbers for that pump. Both a Seal Kit and a Rebuild Kit are needed to completely rebuild the pump. Additional non-kit parts, such as Rotor and Shaft Assembly, may also be required, depending on wear.

ITEM	PART (may not exactly match parts list descriptions)	PART INCLUDED IN:		
		124A (Packed) SEAL KIT	4124A (Sealed) SEAL KIT	REBUILD KIT
1	Locknut	✓	✓	
2	Lockwasher (Except G)	✓	✓	
3	End Cap for Bearing Housing			
4	Bearing Spacer Collar (Outer)	✓	✓	
5	Lip Seal for Bearing Housing (Except G)	✓	✓	
6	Ball Bearing ②	✓	✓	
7	Bearing Housing			
8	Bearing Spacer Collar (Inner)	✓	✓	
11	Ring, Half Round, 2 Req'd (Except G, H, HL, Q, QS, M)	✓	✓	
12	Grease Fitting			
15	Packing Gland ③			
16	Packing Gland Nut	✓	✓	
17	Packing Gland Capscrew	✓	✓	
19	Packing (123/4/6/7A only)	✓		
19A	Mechanical Seal (4123/4/6/7A only)		✓	
20	Packing Retainer Washer (123/4/6/7A only)	✓		
21	Mechanical Seal Collar (for component seals except PTFE)		✓	

ITEM	PART (may not exactly match parts list descriptions)	PART INCLUDED IN:		
		124A (Packed) SEAL KIT	4124A (Sealed) SEAL KIT	REBUILD KIT
24	Seal Spacer ④		✓	
25	Bracket Bushing (part of 27)			✓
27	Bracket and Bushing Assembly			
28	Capscrew for Bracket ①			
29	Bracket Gasket	✓	✓	
30	Pipe Plug			
31	Casing (tapped or flanged)			
35	Head Gasket	✓	✓	
36	Rotor and Shaft Assembly			
37	Idler and Bushing Assembly			✓
38	Idler bushing (part of 37)			
39	Idler Pin (part of 40)			
40	Head and Idler Pin Assembly			✓
43	Capscrews for Head ①			✓
45	Gaskets for Relief Valve	✓	✓	
46	Capscrews for Valve ①			✓
47	Relief Valve (or cover plate if less valve)			

Download current Technical Service Manuals from www.vikingpump.com:

TSM 1400 – 124A Series™, 4124A Series™, 4124B Series™, 224A Series™, 4224A Series™, 4224B Series™ – **Sizes G, H, HL, AK, AL, K, KK, L, LQ, LL, LS, Q, QS, M, N, R, RS**

TSM 1600 – 126A Series™, 4126A Series™, 226A Series™, 4226A Series™ – **Sizes H, HL, K, KK, L, LQ, LL, LS, Q, QS**

TSM 1300 – 123A Series™, 4123A Series™, 223A Series™, 4223A Series™, 323A Series™, 4323A Series™ – **Sizes H, HL, K, KK, LQ, LL, LS, Q, QS, N, R, RS**

TSM 1700 – 127A Series™, 4127A Series™, 227A Series™, 4227A Series™, 327A Series™, 4327A Series™ – **Sizes H, HL, K, KK, LQ, LL, LS, Q, QS, N, R, RS**

TSM 1706 – 724 Series™, 4724 Series™ – **Sizes F, FH, G, H, HL, K, KK, L, LQ, LL**

TSM 1461 – 4624B Series™ – **Sizes H, HL, K, KK, L, LQ, LL, LS, Q, QS**

TSM 2300 – 123C Series™, 4123C Series™, 223C Series™, 4223C Series™ – **Sizes H, HL, K, KK, L, LL, LS, Q, QS**

TSM 2700 – 127C Series™, 4127C Series™, 227C Series™, 4227C Series™ – **Sizes H, HL, K, KK, L, LL, LS, Q, QS**

① Quantity of capscrews depends on pump size.

② Q & QS size have two roller bearings (not illustrated)

③ Q & QS size use a seal holder and seal plate on mechanically sealed pumps. (not illustrated)

④ Used in H-LL size 4127C Series™ and 4227C Series™ pumps using a behind the rotor seal. (not illustrated)

Kits include parts for relief valve head. Plain Head pumps will not need relief valve gaskets or capscrews. Discard extra parts.

Use Seal Lubricant in Seal Kit for installing mechanical seal and O-rings.

Seal kits include setscrews for bearing housing and end cap (not illustrated, all sizes).

Seal kits include flat washers and O-ring for seal gland (not illustrated, G size only).

Important safety information and rebuild instructions are found in the Technical Service Manual.