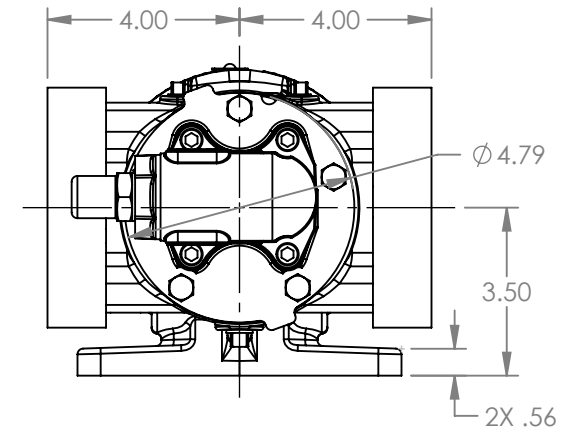
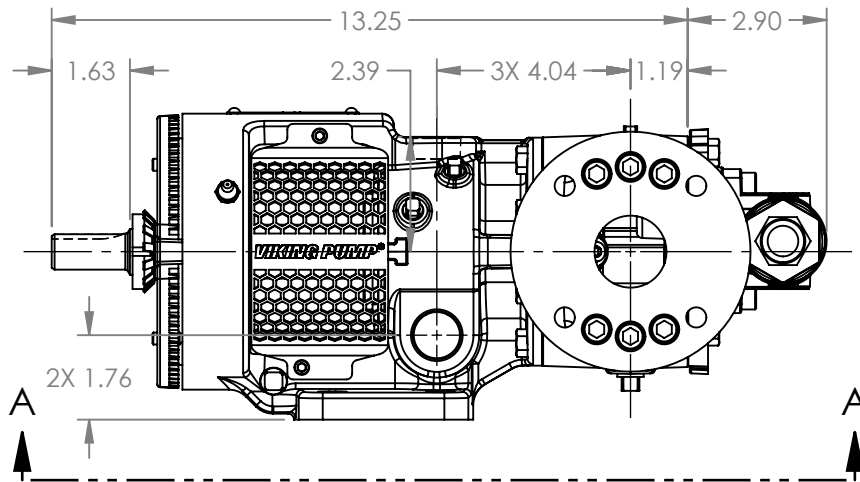


VIEW A-A



MODELS WITH OPTIONAL FLANGED PORTS:
H224C, H1224C, H4224C,
HL224C, HL1224C, HL224C

NOTES:
1. ALL DIMENSIONS ARE FOR REFERENCE ONLY.

| | | |
|---------|------------|------------|
| STATE | Released | 01/20/2026 |
| DRAWN | aeverhardt | 01/09/2026 |
| CHECKED | DTL | 01/20/2026 |

DIMENSIONS ARE IN
INCHES

PROJECT: E399

WAS:

VIKING PUMP

VIKING PUMP, INC.
A Unit of IDEX Corporation
Cedar Falls, IA 50613 U.S.A.
VIKINGPUMP.COM

THIS DRAWING IS THE PROPERTY OF
VIKING PUMP, INC. AND IS PROPRIETARY
IN GENERAL AND DETAIL. IT SHALL NOT BE
COPIED OR ITS CONTENTS REVEALED TO
OUTSIDE PARTIES WITHOUT THE WRITTEN
CONSENT OF VIKING PUMP, INC.

3D

DWG. NO.
HV-4297

SHEET 1 OF 1

REV. A.0

01/20/2026