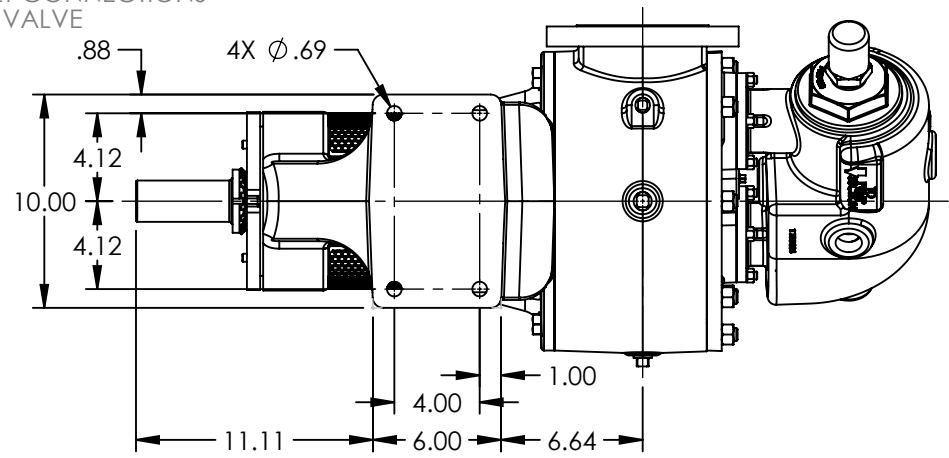
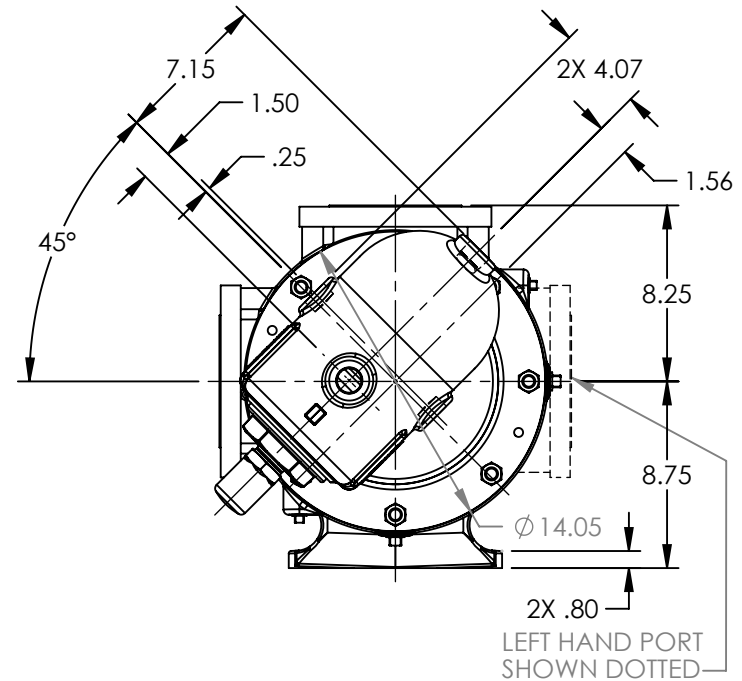
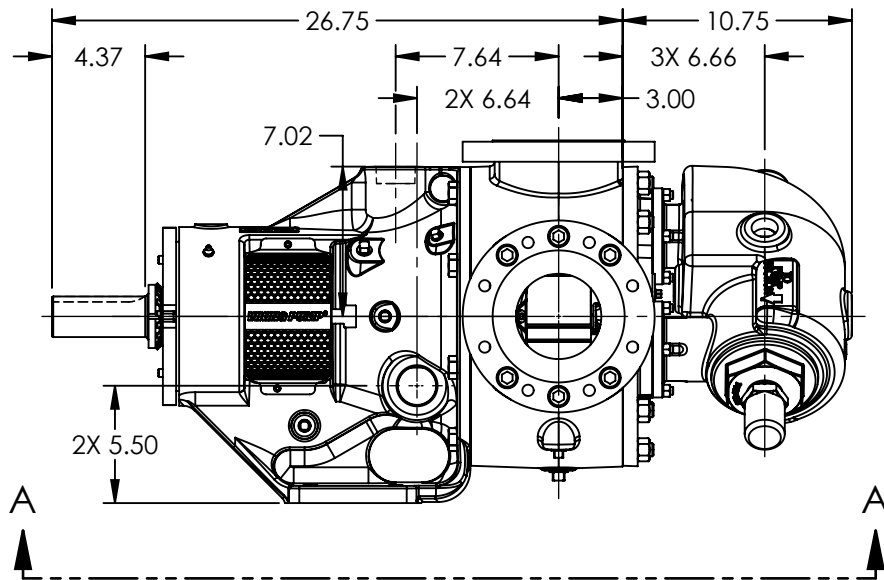


PORTS: 2X 4" RAISED FACE FLANGES STUDS AND NUTS (NOT SHOWN) SUITABLE FOR USE WITH CLASS 150 ANSI FLANGES (223C, 4223C, 227C, 1227C, 4227C)



VIEW A-A



NOTES:  
1. ALL DIMENSIONS ARE FOR REFERENCE ONLY.

STANDARD MODELS:  
Q223C, Q4223C, Q227C, Q1227C, Q4227C

STATE	Released	04/16/2024
DRAWN	dalcom	06/09/2023
CHECKED	AA	04/16/2024

DIMENSIONS ARE IN INCHES

PROJECT: E330

WAS:

**VIKING PUMP**

VIKING PUMP, INC.  
A Unit of IDEX Corporation  
Cedar Falls, IA 50613 U.S.A.  
VIKINGPUMP.COM

THIS DRAWING IS THE PROPERTY OF VIKING PUMP, INC. AND IS PROPRIETARY IN GENERAL AND DETAIL. IT SHALL NOT BE COPIED OR ITS CONTENTS REVEALED TO OUTSIDE PARTIES WITHOUT THE WRITTEN CONSENT OF VIKING PUMP, INC.

3D

DWG. NO.  
QV-2210

SHEET 1 OF 1

REV. A.1

04/16/2024