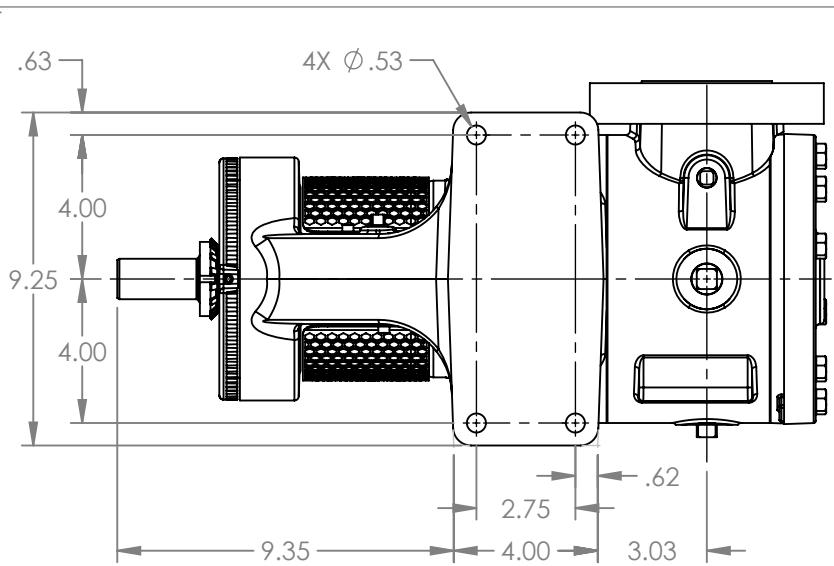
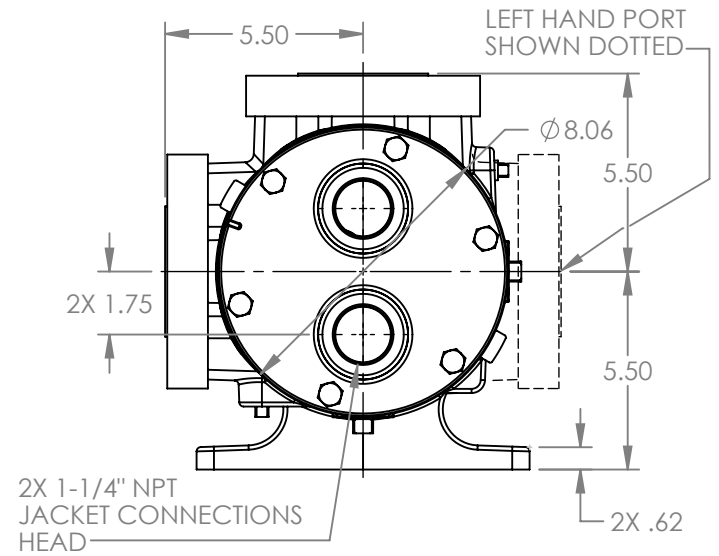
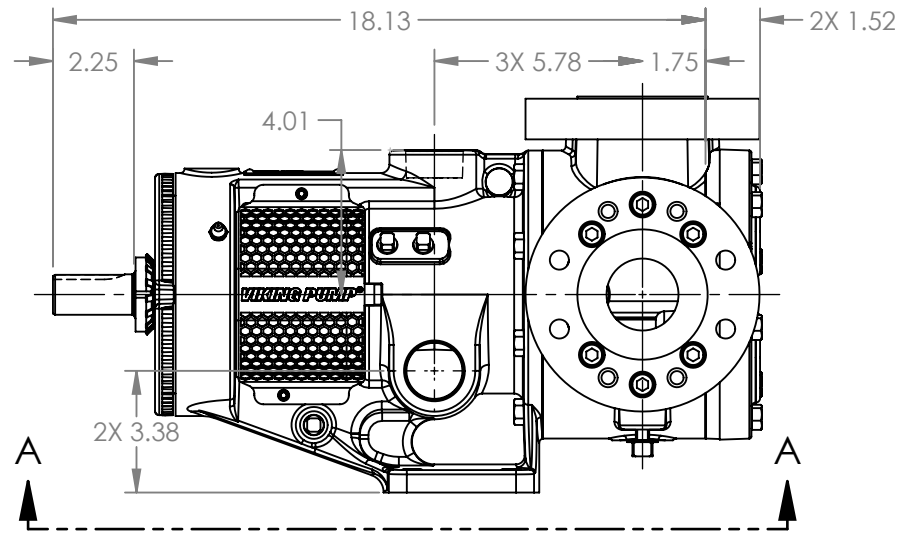


PORTS: 2X 2" RAISED FACE FLANGES DRILLED AND TAPPED SUITABLE FOR USE WITH CLASS 300 ANSI FLANGES (223C, 4223C, 227C, 1227C, 4227C)



VIEW A-A



MODELS WITH OPTIONAL FLANGED PORTS:
 K223C, K4223C, K227C, K1227C, K4227C,
 KK223C, KK4223C, KK227C, KK1227C, KK4227C

NOTES:
 1. ALL DIMENSIONS ARE FOR REFERENCE ONLY.

STATE	Released	04/16/2024
DRAWN	dalcorn	07/06/2023
CHECKED	BAM	04/16/2024

DIMENSIONS ARE IN INCHES
 PROJECT: E330
 WAS:



VIKING PUMP, INC.
 A Unit of IDEX Corporation
 Cedar Falls, IA 50613 U.S.A.
 VIKINGPUMP.COM

THIS DRAWING IS THE PROPERTY OF VIKING PUMP, INC. AND IS PROPRIETARY IN GENERAL AND DETAIL. IT SHALL NOT BE COPIED OR ITS CONTENTS REVEALED TO OUTSIDE PARTIES WITHOUT THE WRITTEN CONSENT OF VIKING PUMP, INC.

3D

DWG. NO.
 KV-2649

SHEET 1 OF 1

REV. A.2

04/16/2024