

DATA SHEET

Three Phase Induction Motor - Squirrel Cage



Customer :

Product line : W22 NEMA Premium Efficiency Three-Phase Product code : 11355771
Catalog # : 12512ET3E445T-W22

Frame	: 444/5T	Locked rotor time	: 34s (cold) 19s (hot)
Output	: 125 HP	Temperature rise	: 80 K
Poles	: 6	Duty cycle	: Cont.(S1)
Frequency	: 60 Hz	Ambient temperature	: -20°C to +40°C
Rated voltage	: 208-230/460 V	Altitude	: 1000 m.a.s.l.
Rated current	: 316-286/143 A	Protection degree	: IP55
L. R. Amperes	: 2024-1830/915 A	Cooling method	: IC411 - TEFC
LRC	: 6.4x(Code G)	Mounting	: F-1
No load current	: 96.6-112/56.0 A	Rotation ¹	: Both (CW and CCW)
Rated speed	: 1185 rpm	Noise level ²	: 69.0 dB(A)
Slip	: 1.25 %	Starting method	: Direct On Line
Rated torque	: 547 ft.lb	Approx. weight ³	: 1819 lb
Locked rotor torque	: 210 %		
Breakdown torque	: 240 %		
Insulation class	: F		
Service factor	: 1.15		
Moment of inertia (J)	: 104 sq.ft.lb		
Design	: B		

Output	25%	50%	75%	100%	Foundation loads	
Efficiency (%)	95.2	95.0	95.4	95.0	Max. traction	: 3177 lb
Power Factor	0.45	0.70	0.79	0.83	Max. compression	: 4995 lb

		Drive end	Non drive end
Bearing type	:	6319 C3	6316 C3
Sealing	:	WSeal	WSeal
Lubrication interval	:	13000 h	16000 h
Lubricant amount	:	45 g	34 g
Lubricant type	:	Mobil Polyrex EM	

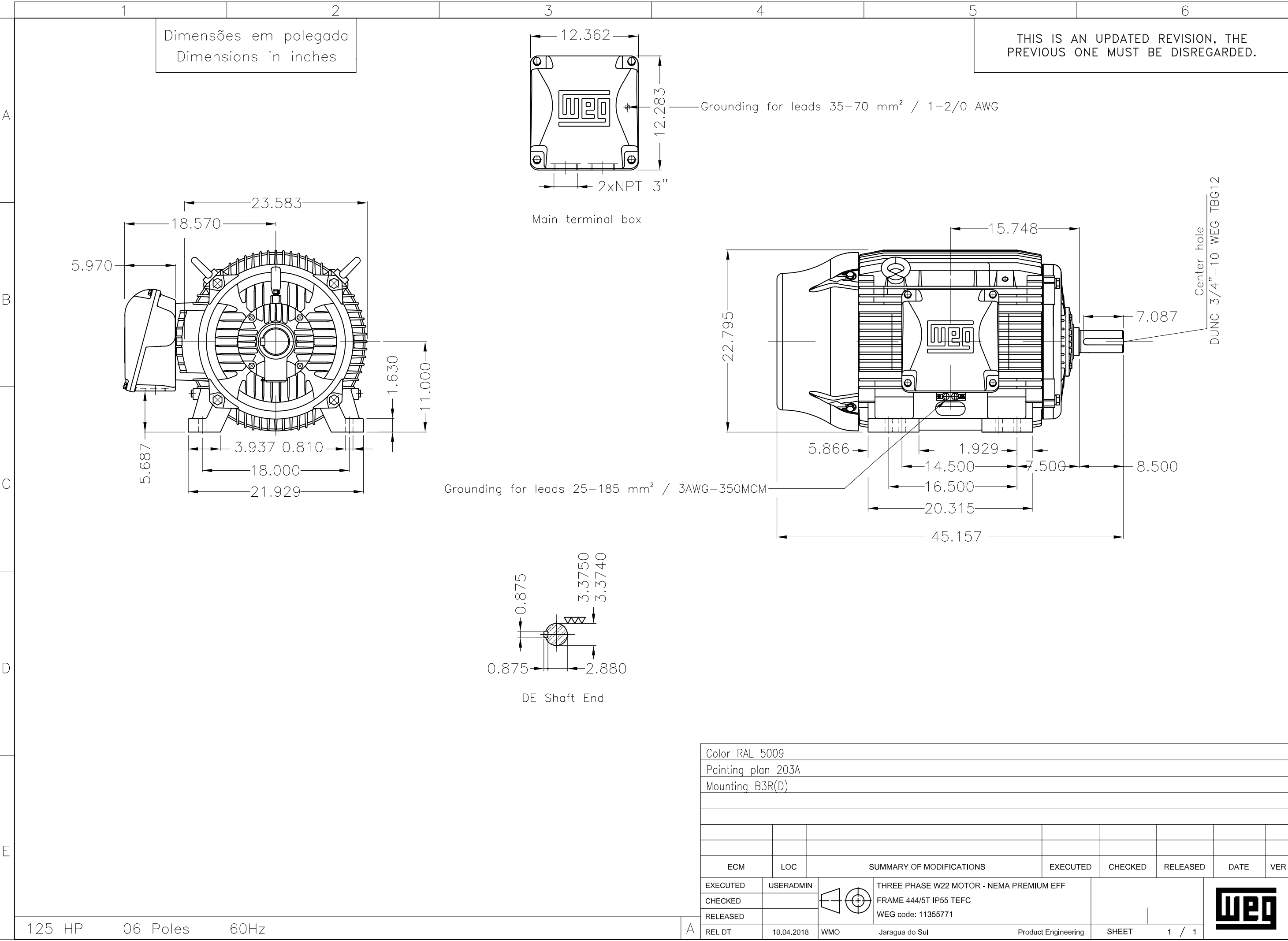
Notes

This revision replaces and cancel the previous one, which must be eliminated.

- (1) Looking the motor from the shaft end.
- (2) Measured at 1m and with tolerance of +3dB(A).
- (3) Approximate weight subject to changes after manufacturing process.
- (4) At 100% of full load.

These are average values based on tests with sinusoidal power supply, subject to the tolerances stipulated in NEMA MG-1.

Rev.	Changes Summary	Performed	Checked	Date
Performed by		Page Revision 1 / 1		
Checked by				
Date	10/04/2018			



LOAD PERFORMANCE CURVE

Three Phase Induction Motor - Squirrel Cage

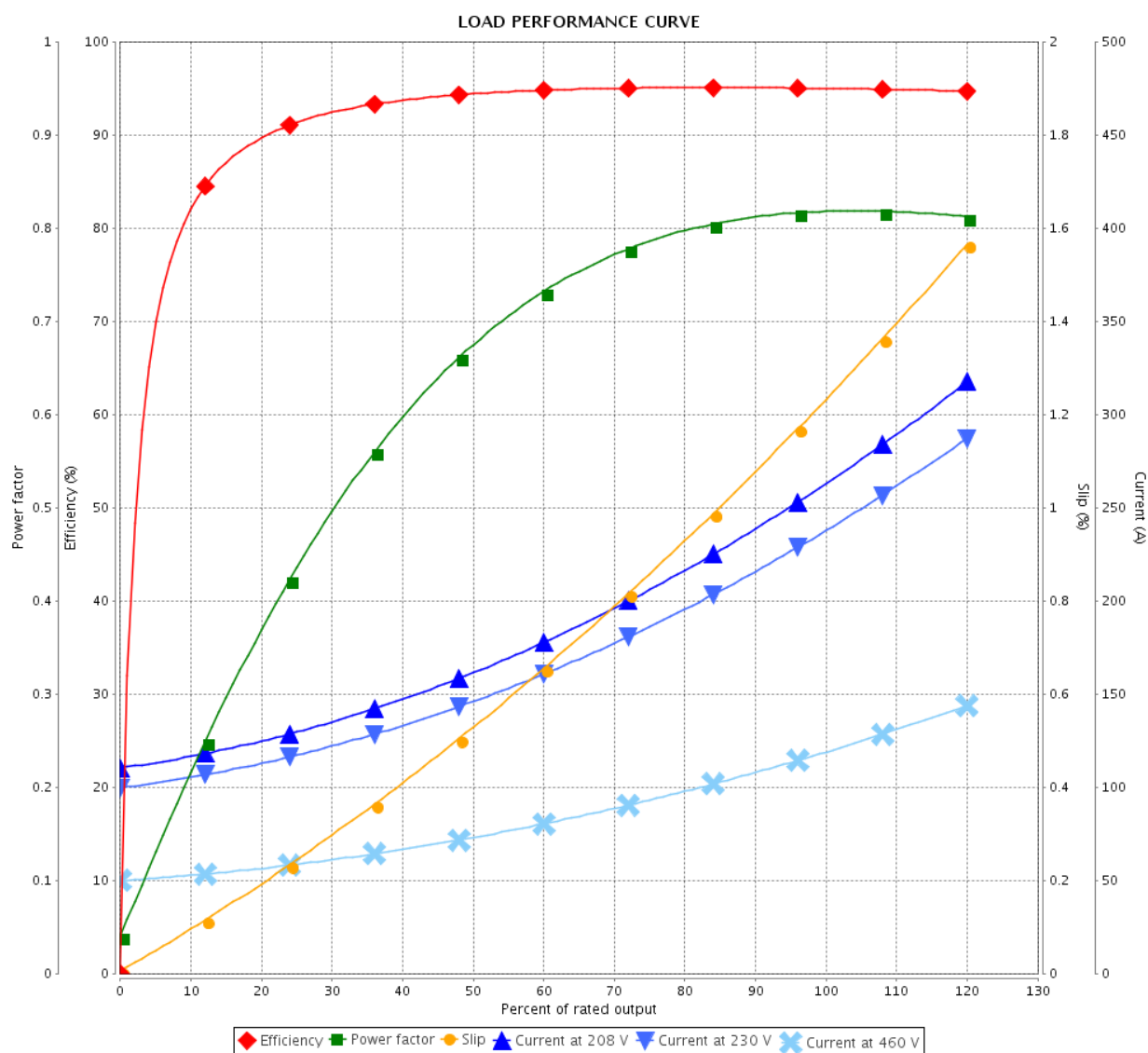


Customer :

Product line : W22 NEMA Premium Efficiency
Three-Phase

Product code : 11355339

Catalog # : 10012ET3E444T-W22



Performance : 208-230/460 V 60 Hz 6P

Rated current : 268-242/121 A
LRC : 6.2
Rated torque : 437 ft.lb
Locked rotor torque : 220 %
Breakdown torque : 260 %
Rated speed : 1185 rpm

Moment of inertia (J) : 87.3 sq.ft.lb
Duty cycle : Cont.(S1)
Insulation class : F
Service factor : 1.25
Temperature rise : 80 K
Design : B

Rev.	Changes Summary	Performed	Checked	Date
Performed by				Page 3 / 6
Checked by				
Date				
22/04/2019				Revision

THERMAL LIMIT CURVE

Three Phase Induction Motor - Squirrel Cage



Customer

:

Product line

: W22 NEMA Premium Efficiency
Three-Phase

Product code :

11355339

Catalog # :

10012ET3E444T-W22

Performance : 208-230/460 V 60 Hz 6P

Rated current : 268-242/121 A

LRC : 6.2

Rated torque : 437 ft.lb

Locked rotor torque : 220 %

Breakdown torque : 260 %

Rated speed : 1185 rpm

Moment of inertia (J) : 87.3 sq.ft.lb

Duty cycle : Cont.(S1)

Insulation class : F

Service factor : 1.25

Temperature rise : 80 K

Design : B

Heating constant

Cooling constant

Rev.

Changes Summary

Performed

Checked

Date

Performed by

Checked by

Date

22/04/2019

Page

4 / 6

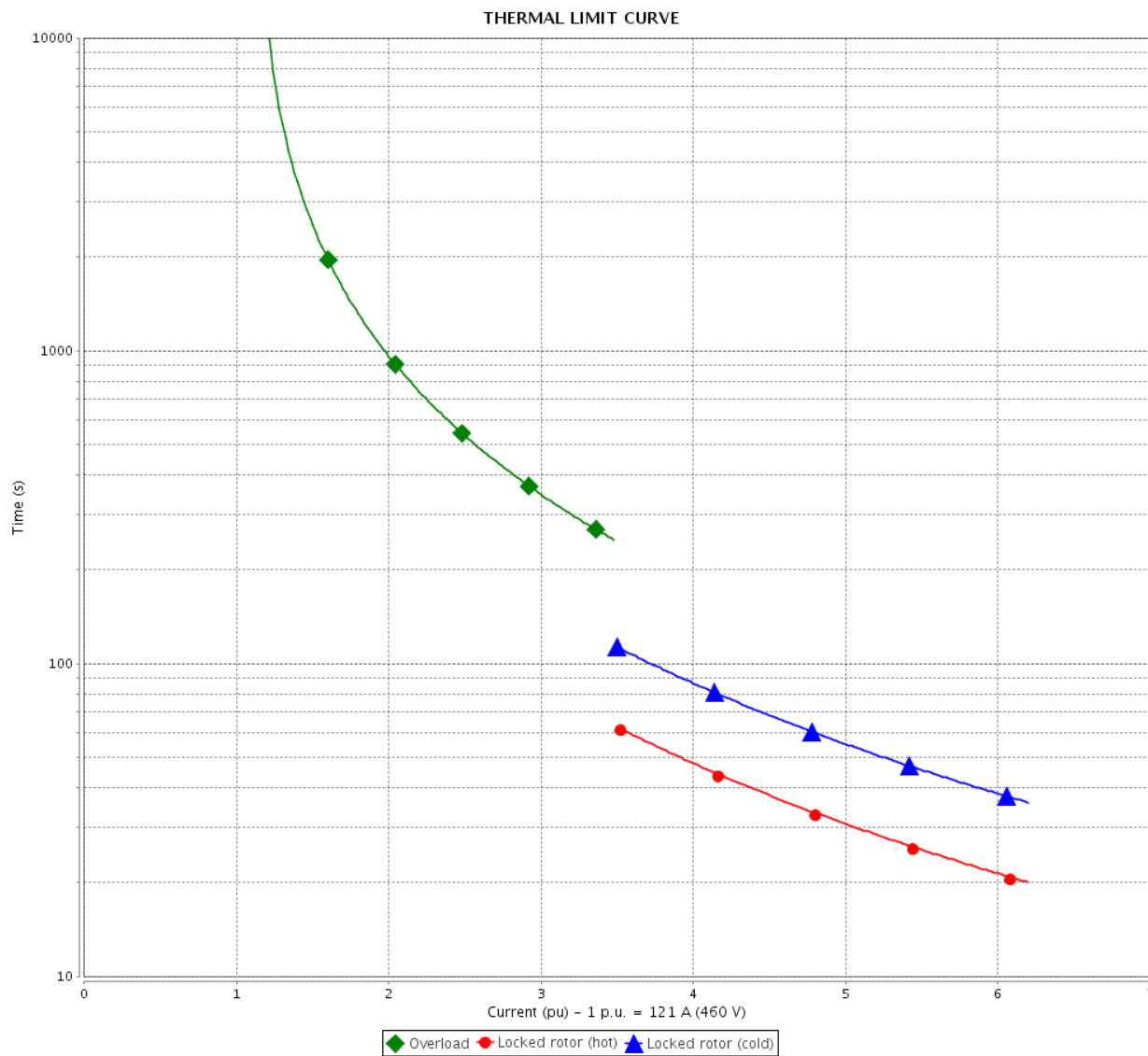
Revision

THERMAL LIMIT CURVE

Three Phase Induction Motor - Squirrel Cage



Customer : _____



Rev.	Changes Summary		Performed	Checked	Date
Performed by				Page 5 / 6	Revision
Checked by					
Date	22/04/2019				

VFD OPERATION CURVE

Three Phase Induction Motor - Squirrel Cage

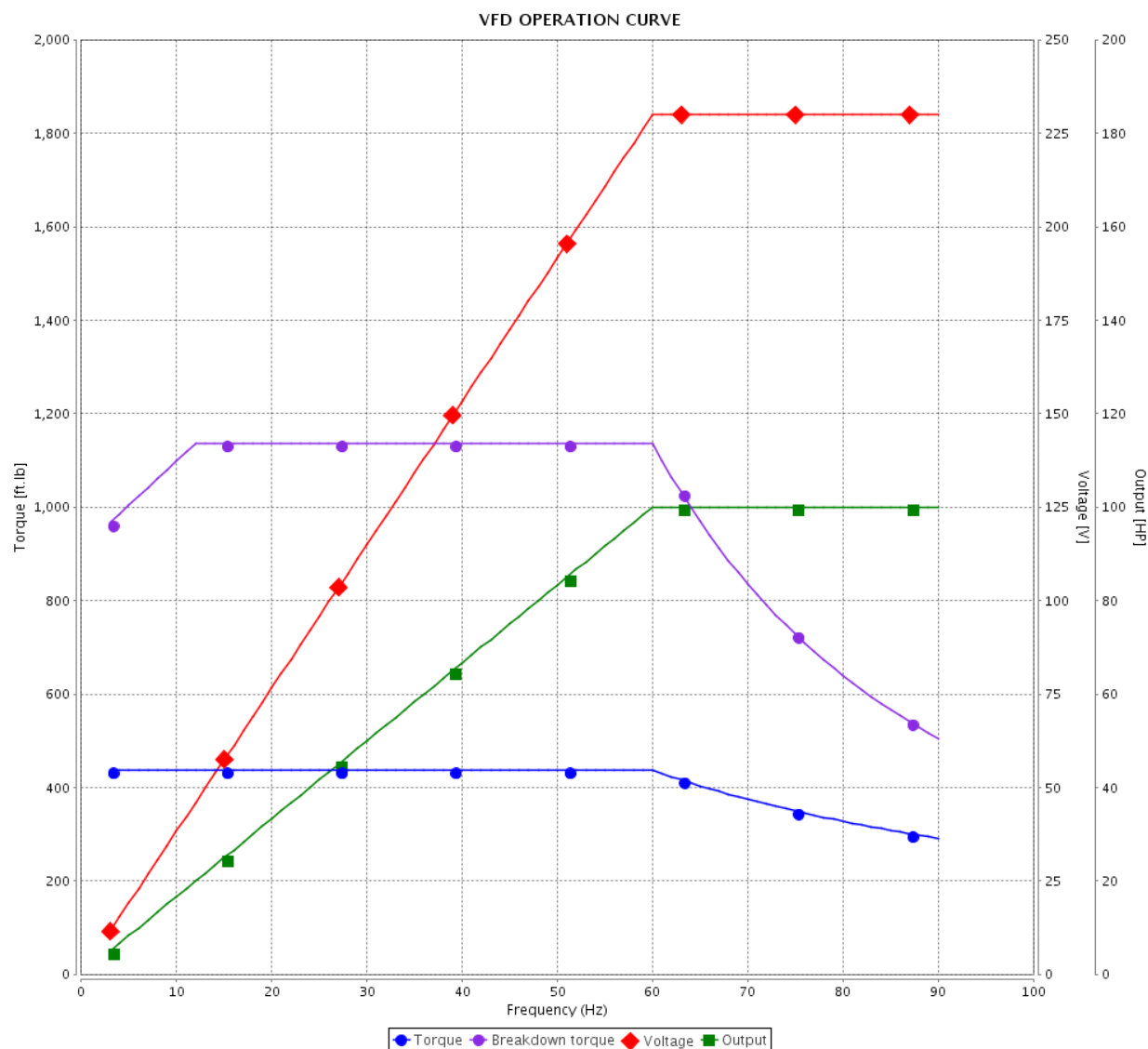


Customer :

Product line : W22 NEMA Premium Efficiency
Three-Phase

Product code : 11355339

Catalog # : 10012ET3E444T-W22



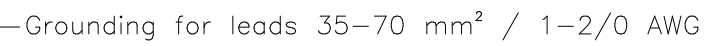
Performance : 208-230/460 V 60 Hz 6P

Rated current : 268-242/121 A
LRC : 6.2
Rated torque : 437 ft.lb
Locked rotor torque : 220 %
Breakdown torque : 260 %
Rated speed : 1185 rpm

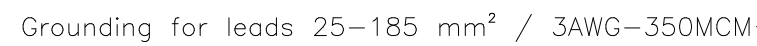
Moment of inertia (J) : 87.3 sq.ft.lb
Duty cycle : Cont.(S1)
Insulation class : F
Service factor : 1.25
Temperature rise : 80 K
Design : B



Rev.	Changes Summary	Performed	Checked	Date
Performed by		Page 6 / 6Revision		
Checked by				
Date	22/04/2019			

THIS IS AN UPDATED REVISION, THE
PREVIOUS ONE MUST BE DISREGARDED.



Main terminal box



Color RAL 5009									
Painting plan 203A									
Mounting B3R(D)									
ECM	LOC	SUMMARY OF MODIFICATIONS			EXECUTED	CHECKED	RELEASED	DATE	VER
EXECUTED	USERADMIN		THREE PHASE W22 MOTOR - NEMA PREMIUM EFF						
CHECKED			FRAME 444/5T IP55 TEFC						
RELEASED			WEG code: 11355339						
REL DT	22.04.2019	WMO	Jaragua do Sul	Product Engineering	SHEET	1 / 1			

MODEL 10012ET3E444T-W22

MADE IN MEXICO

11355339


W22 NEMA
CC029A Premium
*Inverter Duty Motor
Severe Duty*

**3PT9
LISTED**

 FOR SAFE AREA
 MOD.TE1BFOXON

C US
 Energy Verified

For 60Hz: Class I, Div 2, Gr. A, B, C and D - T3

Class I, Zone 2, IIC - T3

Class II, Div 2, Gr. F and G - T3C

 For 60Hz use on PWM, Gr. A, B, C, D and F,
 VT 1000:1, CT 20:1, 1.0SF, T3A

PH 3 FR 444/5T HP(kW) 100.0(75.0) Hz 60

V 230/460 A 242/121 RPM 1185 DES B

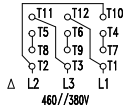
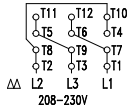
 NEMA NOM EFF 95.0 % INS. CL. F Δ T 80 K IP55

ENCL TEFC DUTY CONT. AMB. 40°C

CODE G PF 0.82 SF 1.25 SFA 303/151

USABLE @208V 268 A SF 1.10 SFA 295

100HP 75kW 50Hz 380V 145A 980RPM SF1.00 EFF 93.6% (IE1)



→ 6319-C3 (45g)

→ 6316-C3 (34g)

 MOBIL POLYREX EM
 13000 h

ALT 1000 m.a.s.l. 1676 Lbs