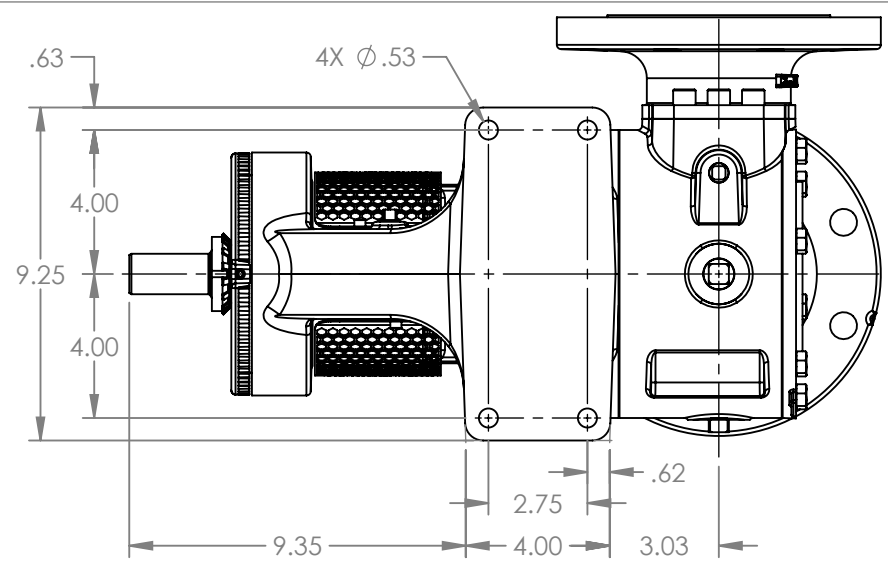
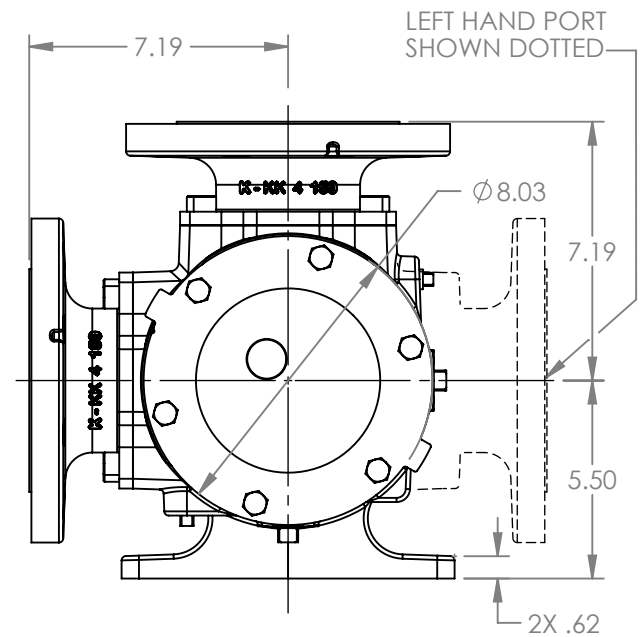
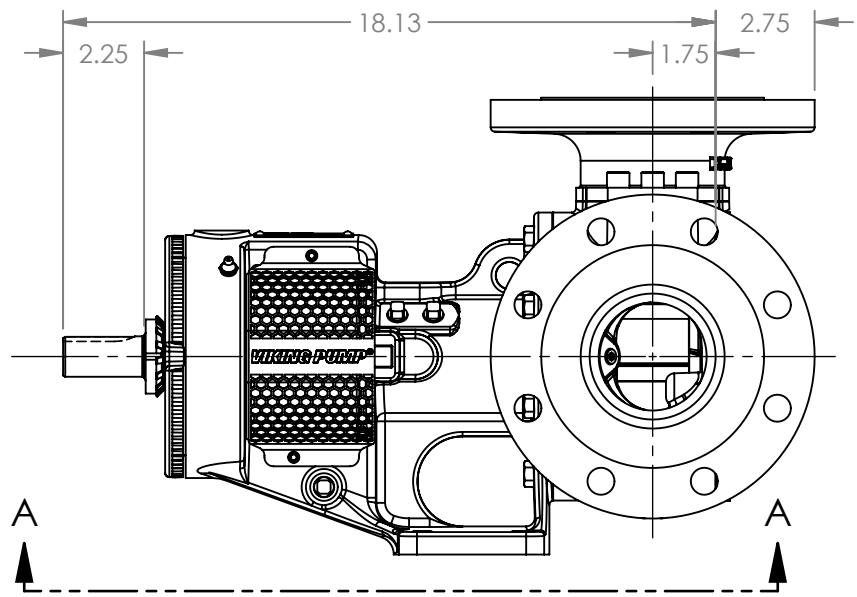


PORTS: 2X 4" RAISED FACE FLANGES  
SUITABLE FOR USE WITH  
CLASS 150 ANSI FLANGES  
(123C, 4123C, 127C, 1127C, 4127C)



VIEW A-A



MODELS WITH OPTIONAL FLANGED PORTS:  
K123C, K4123C, K127C, K1127C, K4127C,  
KK123C, KK4123C, KK127C, KK1127C, KK4127C

NOTES:  
1. ALL DIMENSIONS ARE FOR REFERENCE ONLY.

STATE	Released	04/16/2024
DRAWN	dalcom	06/06/2023
CHECKED	BAM	04/16/2024

DIMENSIONS ARE IN INCHES  
PROJECT: E330  
WAS:



VIKING PUMP, INC.  
A Unit of IDEX Corporation  
Cedar Falls, IA, 50613 U.S.A.  
VIKINGPUMP.COM

THIS DRAWING IS THE PROPERTY OF VIKING PUMP, INC. AND IS PROPRIETARY IN GENERAL AND DETAIL. IT SHALL NOT BE COPIED OR ITS CONTENTS REVEALED TO OUTSIDE PARTIES WITHOUT THE WRITTEN CONSENT OF VIKING PUMP, INC.

3D

DWG. NO. KV-2643

SHEET 1 OF 1

REV. A.2

04/16/2024