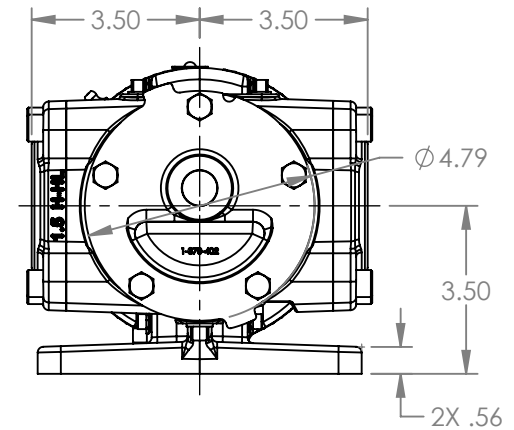
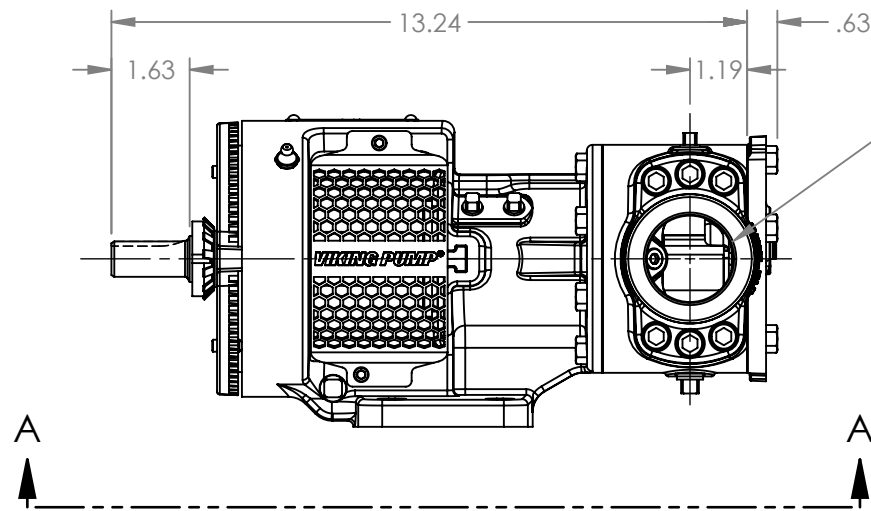


VIEW A-A

PORTS: 2X 1-1/2" NPT



MODELS WITH OPTIONAL PORTS:  
H123C, H4123C, H127C, H1127C, H4127C,  
HL123C, HL4123C, HL127C, HL1127C, HL4127C

NOTES:  
1. ALL DIMENSIONS ARE FOR REFERENCE ONLY.

STATE	Released	10/16/2023
DRAWN	dalcorn	07/14/2023
CHECKED	DTL	07/17/2023

DIMENSIONS ARE IN INCHES
PROJECT: E330
WAS:



VIKING PUMP, INC.  
A Unit of IDEX Corporation  
Cedar Falls, IA 50613 U.S.A.  
VIKINGPUMP.COM

THIS DRAWING IS THE PROPERTY OF VIKING PUMP, INC. AND IS PROPRIETARY IN GENERAL AND DETAIL. IT SHALL NOT BE COPIED OR ITS CONTENTS REVEALED TO OUTSIDE PARTIES WITHOUT THE WRITTEN CONSENT OF VIKING PUMP, INC.

3D

DWG. NO.  
HV-4196

SHEET 1 OF 1

REV. A.0

10/16/2023