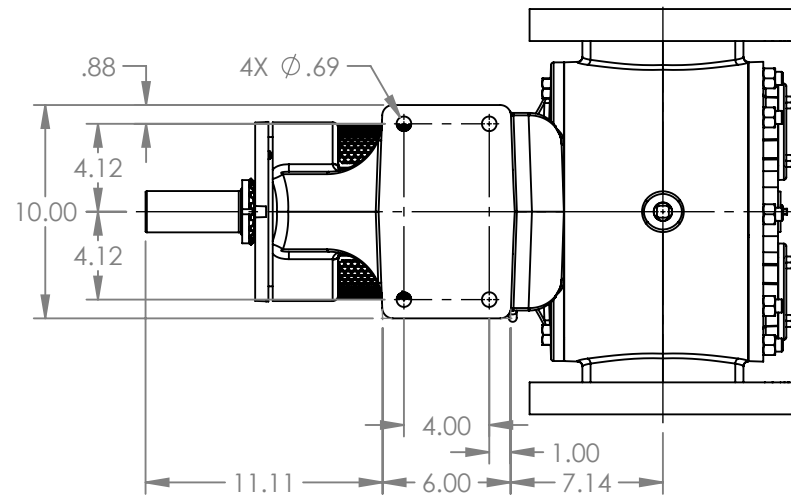
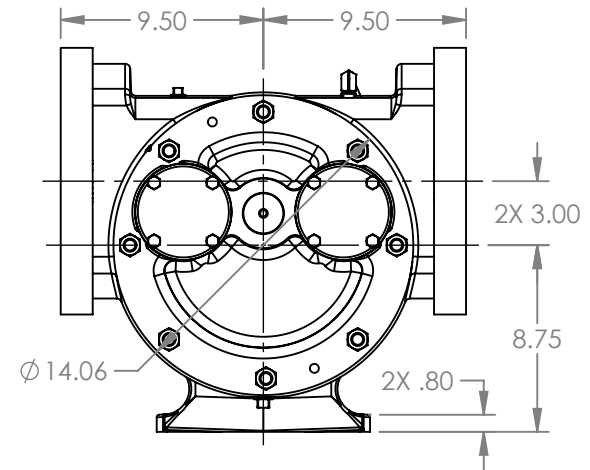
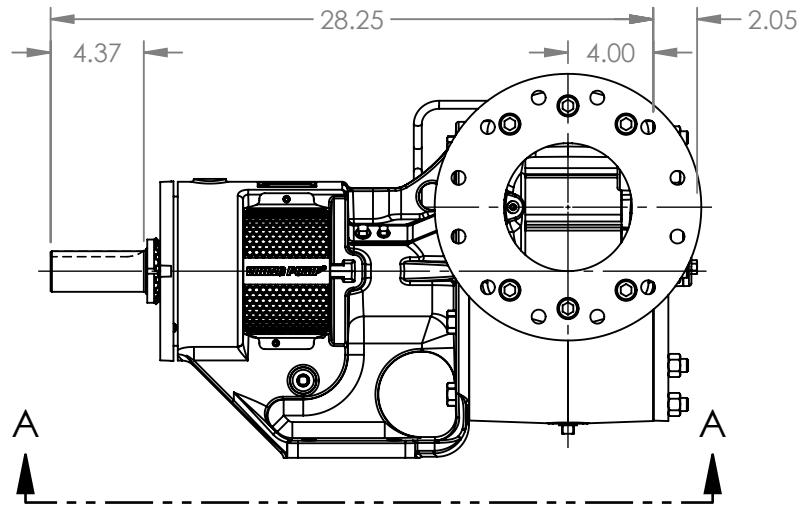


PORTS: 2X 6" FLANGES
STUDS AND NUTS (NOT SHOWN)
SUITABLE FOR USE WITH
CLASS 250 ANSI FLANGES



VIEW A-A



MODELS WITH OPTIONAL FLANGED PORTS:
QS124C, QS1124C, QS4124C, QS4624C

NOTES:
1. ALL DIMENSIONS ARE FOR REFERENCE ONLY.

STATE	Released	10/21/2025
DRAWN	DLende	Oct 16 2025 00:00 AM
CHECKED	JB	10/20/2025

DIMENSIONS ARE IN INCHES
PROJECT: E399
WAS:



VIKING PUMP, INC.
A Unit of IDEX Corporation
Cedar Falls, IA 50613 U.S.A.
VIKINGPUMP.COM

THIS DRAWING IS THE PROPERTY OF
VIKING PUMP, INC. AND IS PROPRIETARY
IN GENERAL AND DETAIL. IT SHALL NOT BE
COPIED OR ITS CONTENTS REVEALED TO
OUTSIDE PARTIES WITHOUT THE WRITTEN
CONSENT OF VIKING PUMP, INC.

3D

DWG. NO.
QV-2361

SHEET 1 OF 1

REV. A.0

10/21/2025