

- NOTES:
1. COUPLING GUARD NOT SHOWN IN TOP VIEW.
 2. ALL DIMENSIONS ARE FOR REFERENCE ONLY.

MODELS: GB-425021-R00-D, GB-425021-R10-D

STATE	Released	07/19/2023	DIMENSIONS ARE IN INCHES
DRAWN	bmanternach	2/9/2023	
CHECKED	BAM	07/19/2023	



VIKING PUMP, INC.
A Unit of IDEX Corporation
Cedar Falls, IA 50613
U.S.A.

THIS DRAWING IS THE PROPERTY OF VIKING PUMP, INC. AND IS PROPRIETARY IN GENERAL AND DETAIL. IT SHALL NOT BE COPIED OR ITS CONTENTS REVEALED TO OUTSIDE PARTIES WITHOUT THE WRITTEN CONSENT OF VIKING PUMP, INC.

3D DWG. NO.
GPV-25021-6

SHEET 1 OF 1
REV. A.1
07/19/2023

DATA SHEET



Three Phase Induction Motor - Squirrel Cage

Customer :						
Product line		: W22 NEMA Premium Efficiency Three-Phase		Product code : 11355339 Catalog # : 10012ET3E444T-W22		
Frame	: 444/5T	Locked rotor time	: 36s (cold) 20s (hot)			
Output	: 100 HP (75 kW)	Temperature rise	: 80 K			
Poles	: 6	Duty cycle	: Cont.(S1)			
Frequency	: 60 Hz	Ambient temperature	: -20°C to +40°C			
Rated voltage	: 208-230/460 V	Altitude	: 1000 m.a.s.l.			
Rated current	: 268-242/121 A	Protection degree	: IP55			
L. R. Amperes	: 1659-1500/750 A	Cooling method	: IC411 - TEFC			
LRC	: 6.2x(Code G)	Mounting	: F-1			
No load current	: 86.2-100/50.0 A	Rotation ¹	: Both (CW and CCW)			
Rated speed	: 1185 rpm	Noise level ²	: 69.0 dB(A)			
Slip	: 1.25 %	Starting method	: Direct On Line			
Rated torque	: 437 ft.lb	Approx. weight ³	: 1685 lb			
Locked rotor torque	: 220 %					
Breakdown torque	: 260 %					
Insulation class	: F					
Service factor	: 1.25					
Moment of inertia (J)	: 87.3 sq.ft.lb					
Design	: B					
Output	50%	75%	100%	Foundation loads		
Efficiency (%)	94.5	95.0	95.0	Max. traction : 2711 lb		
Power Factor	0.68	0.78	0.82	Max. compression : 4395 lb		
		<u>Drive end</u>		<u>Non drive end</u>		
Bearing type	:	6319 C3		6316 C3		
Sealing	:	WSeal		WSeal		
Lubrication interval	:	13000 h		16000 h		
Lubricant amount	:	45 g		34 g		
Lubricant type	:	Mobil Polyrex EM				
Notes						
This revision replaces and cancel the previous one, which must be eliminated. (1) Looking the motor from the shaft end. (2) Measured at 1m and with tolerance of +3dB(A). (3) Approximate weight subject to changes after manufacturing process. (4) At 100% of full load.			These are average values based on tests with sinusoidal power supply, subject to the tolerances stipulated in NEMA MG-1.			
Rev.	Changes Summary			Performed	Checked	Date
Performed by						
Checked by					Page	Revision
Date	22/04/2019				1 / 6	

TORQUE AND CURRENT VS SPEED CURVE

Three Phase Induction Motor - Squirrel Cage

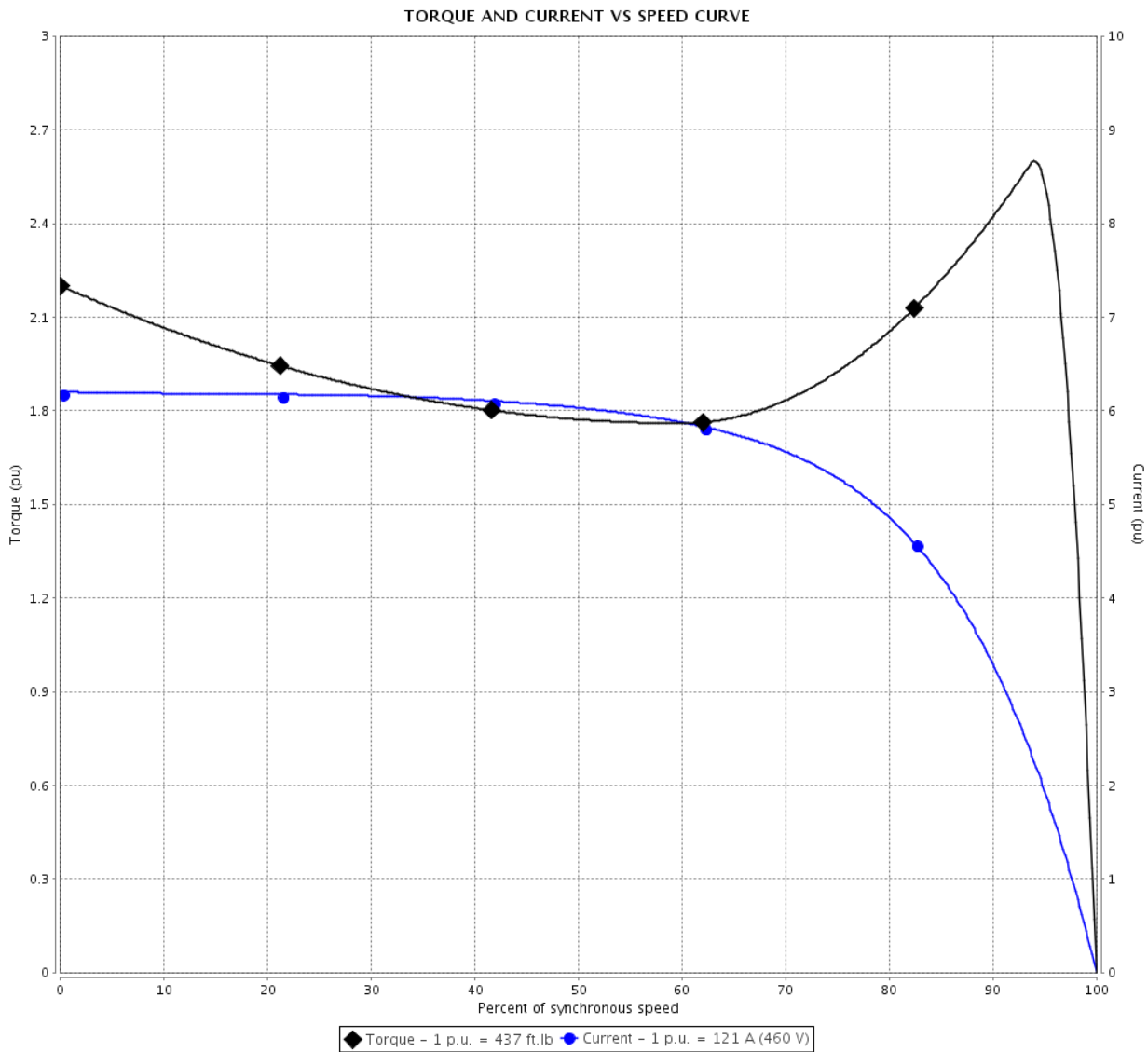


Customer :

Product line : W22 NEMA Premium Efficiency
Three-Phase

Product code : 11355339

Catalog # : 10012ET3E444T-W22



Performance : 208-230/460 V 60 Hz 6P

Rated current	: 268-242/121 A	Moment of inertia (J)	: 87.3 sq.ft.lb
LRC	: 6.2	Duty cycle	: Cont.(S1)
Rated torque	: 437 ft.lb	Insulation class	: F
Locked rotor torque	: 220 %	Service factor	: 1.25
Breakdown torque	: 260 %	Temperature rise	: 80 K
Rated speed	: 1185 rpm	Design	: B

Locked rotor time : 36s (cold) 20s (hot)

Rev.	Changes Summary	Performed	Checked	Date
Performed by			Page 2 / 6	Revision
Checked by				
Date	22/04/2019			

LOAD PERFORMANCE CURVE

Three Phase Induction Motor - Squirrel Cage

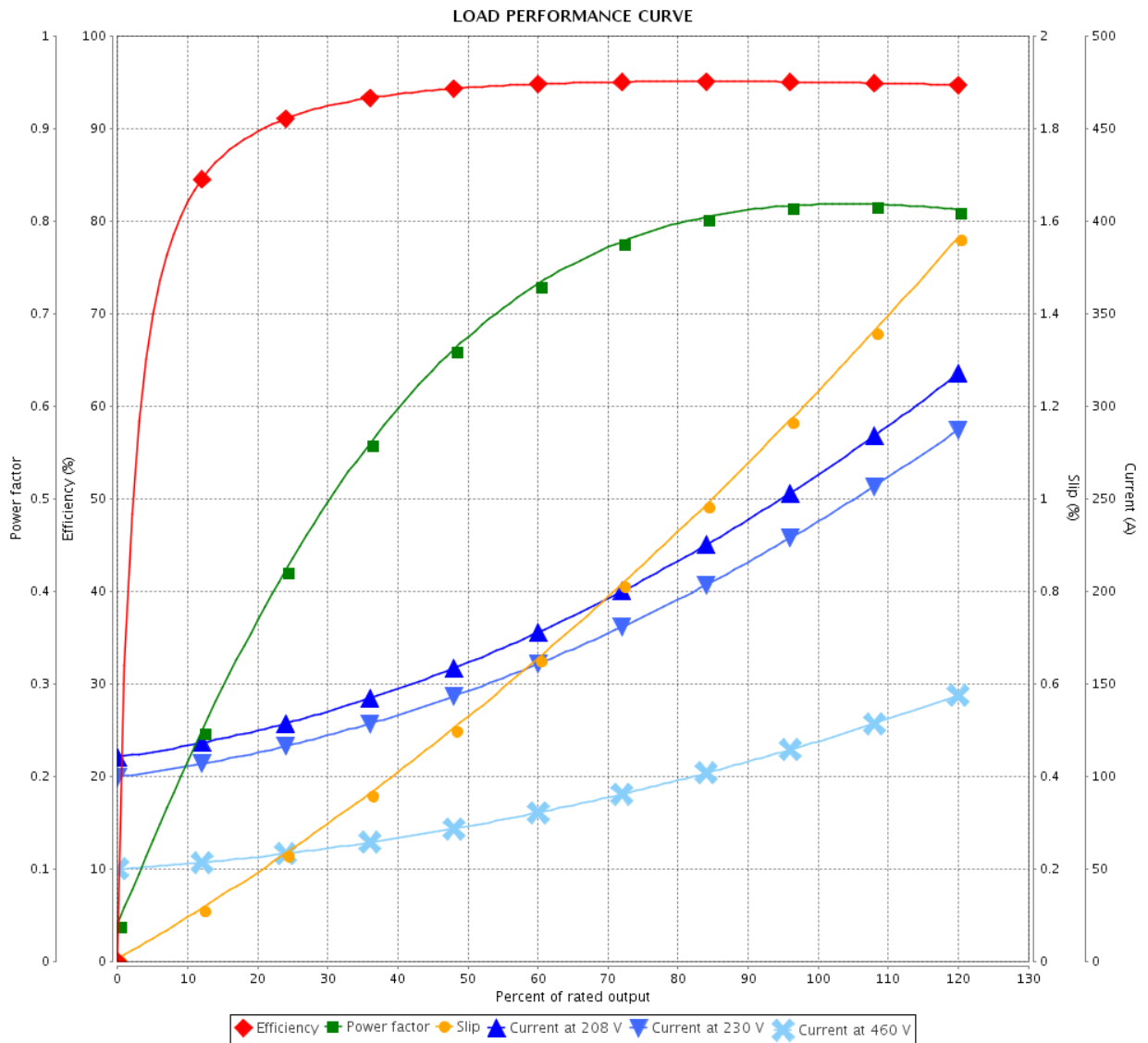


Customer :

Product line : W22 NEMA Premium Efficiency Three-Phase

Product code : 11355339

Catalog # : 10012ET3E444T-W22



Performance : 208-230/460 V 60 Hz 6P

Rated current : 268-242/121 A
 LRC : 6.2
 Rated torque : 437 ft.lb
 Locked rotor torque : 220 %
 Breakdown torque : 260 %
 Rated speed : 1185 rpm

Moment of inertia (J) : 87.3 sq.ft.lb
 Duty cycle : Cont.(S1)
 Insulation class : F
 Service factor : 1.25
 Temperature rise : 80 K
 Design : B

Rev.	Changes Summary	Performed	Checked	Date
Performed by		Page		Revision
Checked by		3 / 6		
Date		22/04/2019		

THERMAL LIMIT CURVE



Three Phase Induction Motor - Squirrel Cage

Customer :

Product line : W22 NEMA Premium Efficiency Three-Phase
 Product code : 11355339
 Catalog # : 10012ET3E444T-W22

Performance : 208-230/460 V 60 Hz 6P

Rated current : 268-242/121 A	Moment of inertia (J) : 87.3 sq.ft.lb
LRC : 6.2	Duty cycle : Cont.(S1)
Rated torque : 437 ft.lb	Insulation class : F
Locked rotor torque : 220 %	Service factor : 1.25
Breakdown torque : 260 %	Temperature rise : 80 K
Rated speed : 1185 rpm	Design : B

Heating constant

Cooling constant

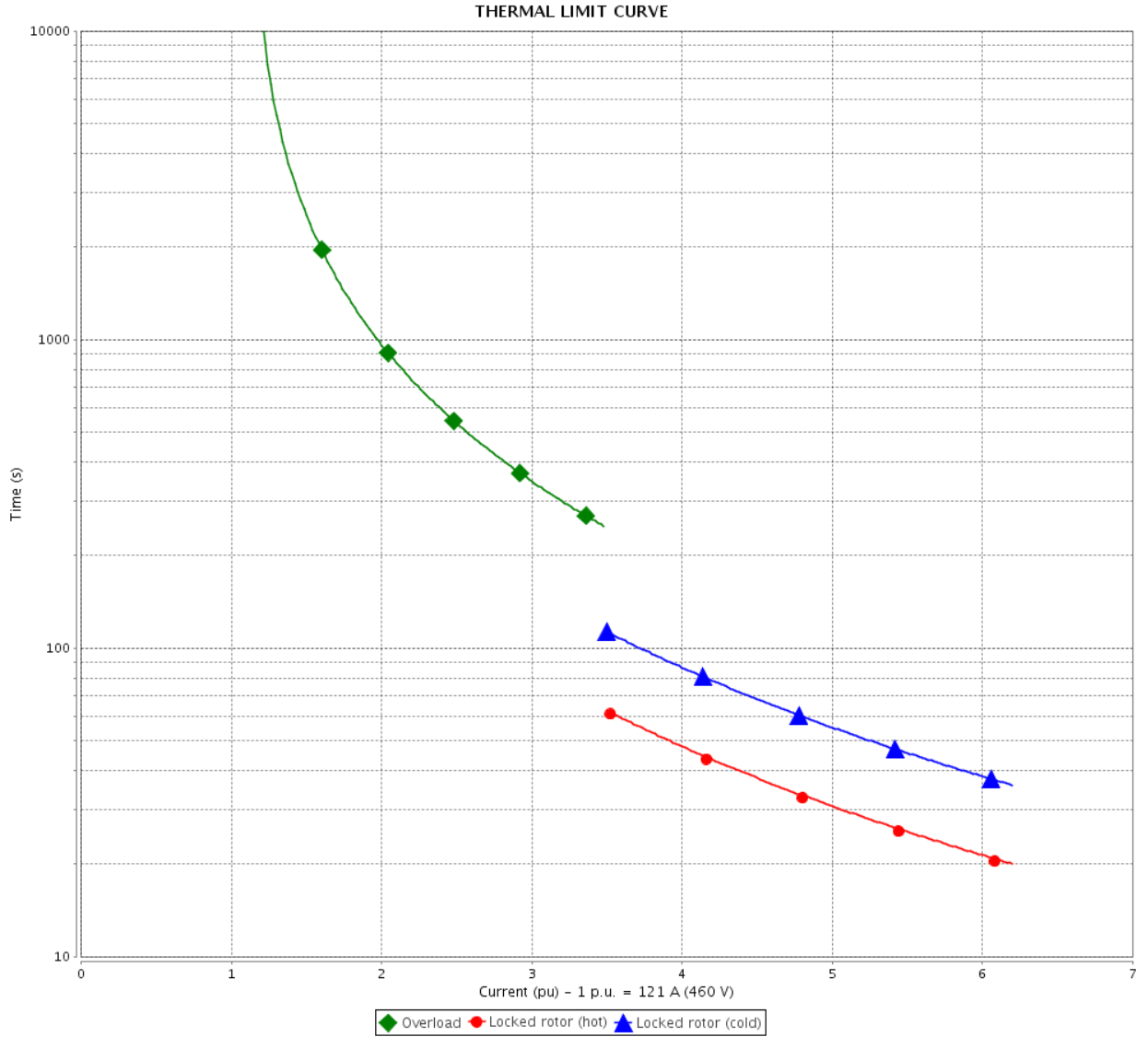
Rev.	Changes Summary	Performed	Checked	Date
Performed by			Page	Revision
Checked by				
Date	22/04/2019			

THERMAL LIMIT CURVE

Three Phase Induction Motor - Squirrel Cage



Customer : _____



Rev.	Changes Summary	Performed	Checked	Date
Performed by		Page		Revision
Checked by				
Date				

VFD OPERATION CURVE

Three Phase Induction Motor - Squirrel Cage

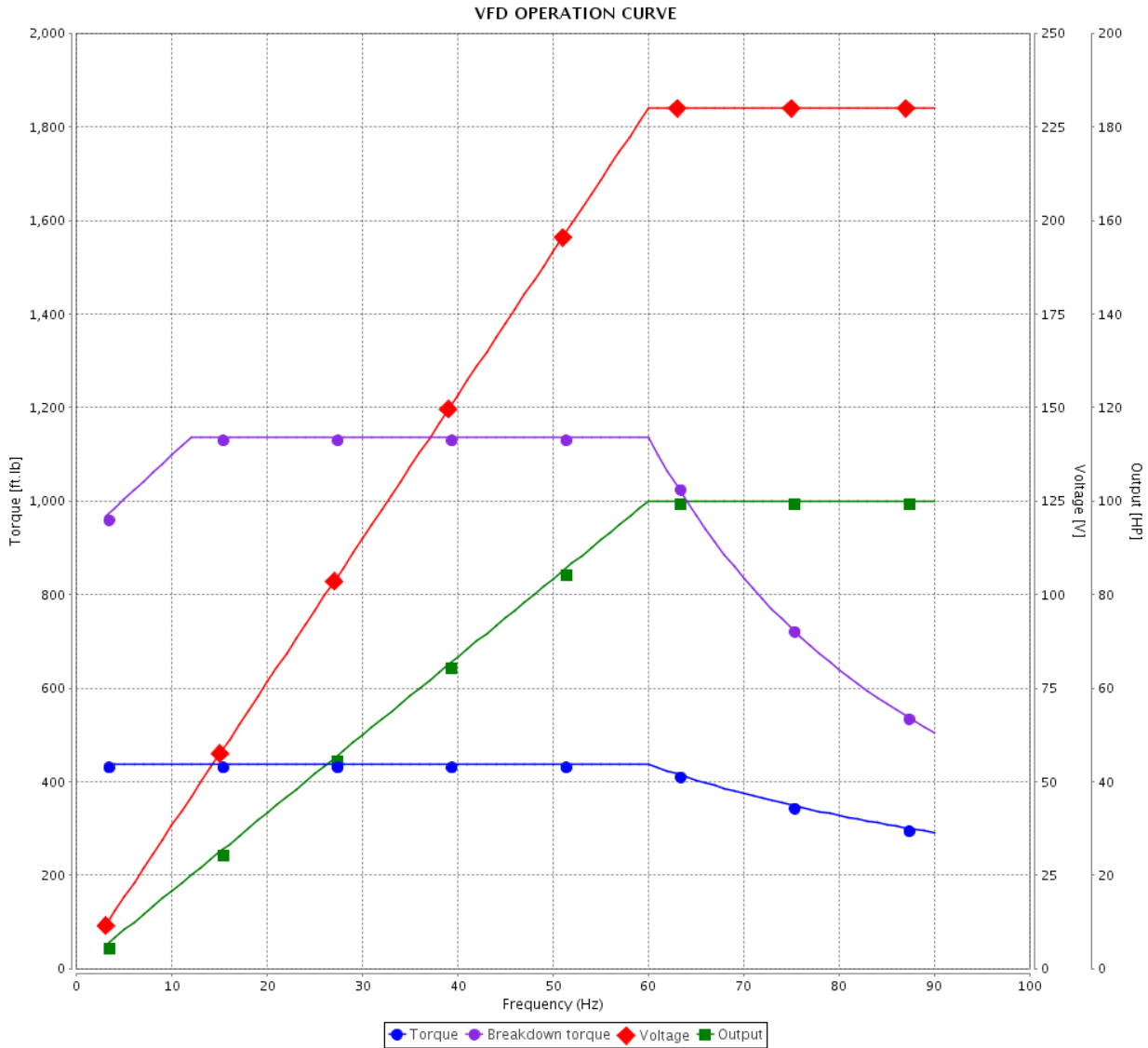


Customer :

Product line : W22 NEMA Premium Efficiency Three-Phase

Product code : 11355339

Catalog # : 10012ET3E444T-W22



Performance : 208-230/460 V 60 Hz 6P

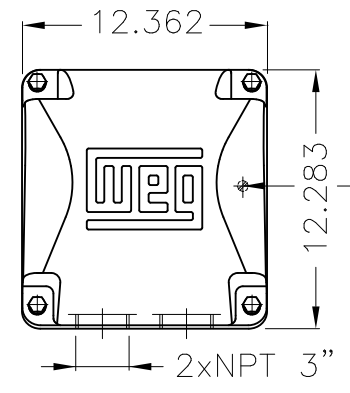
Rated current : 268-242/121 A
 LRC : 6.2
 Rated torque : 437 ft.lb
 Locked rotor torque : 220 %
 Breakdown torque : 260 %
 Rated speed : 1185 rpm

Moment of inertia (J) : 87.3 sq.ft.lb
 Duty cycle : Cont.(S1)
 Insulation class : F
 Service factor : 1.25
 Temperature rise : 80 K
 Design : B

Rev.	Changes Summary	Performed	Checked	Date
Performed by			Page	Revision
Checked by				
Date				

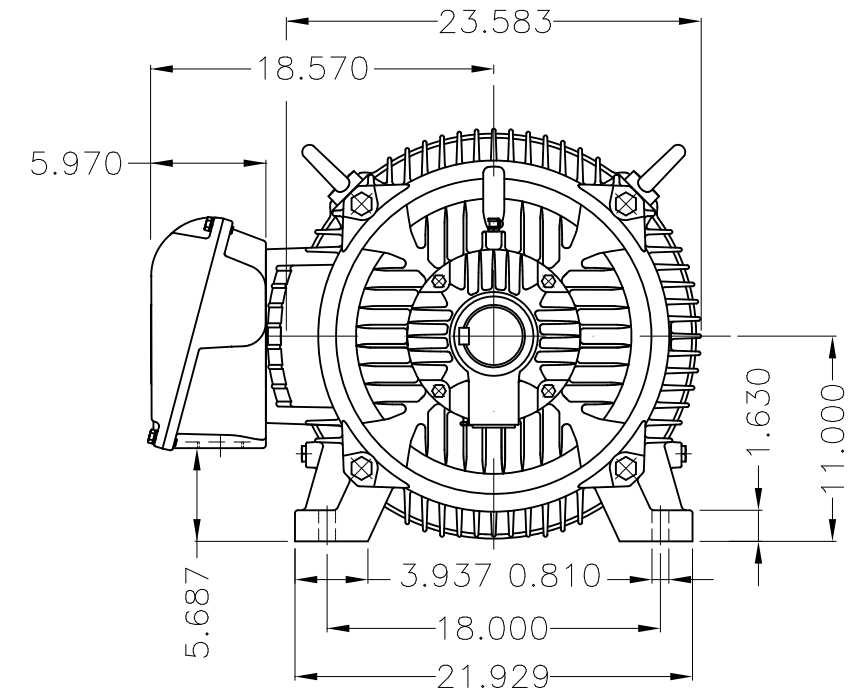
Dimensões em polegada
Dimensions in inches

THIS IS AN UPDATED REVISION, THE
PREVIOUS ONE MUST BE DISREGARDED.

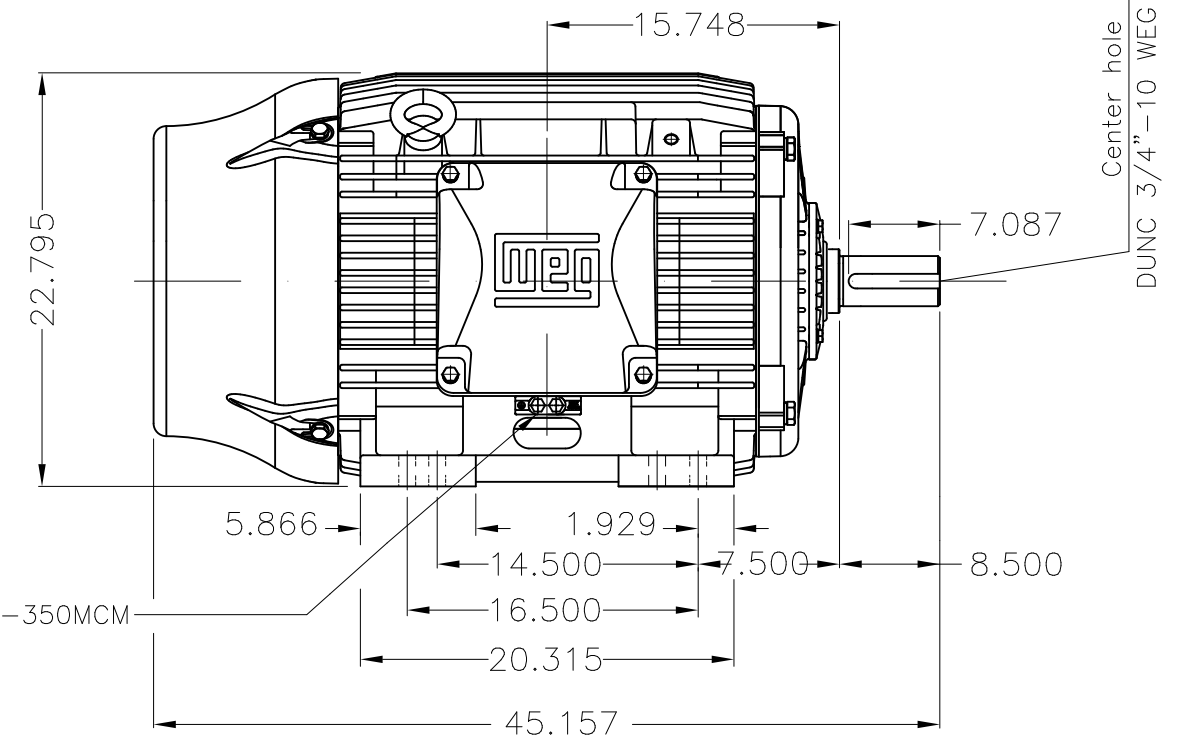


Grounding for leads 35-70 mm² / 1-2/0 AWG

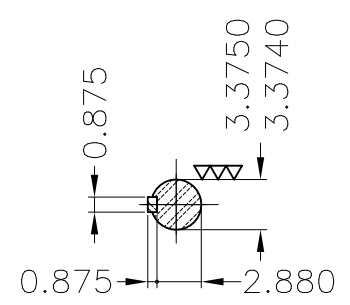
Main terminal box



Grounding for leads 25-185 mm² / 3AWG-350MCM



Center hole
DUNC 3/4"-10 WEG TBG12



DE Shaft End

Color RAL 5009
Painting plan 203A
Mounting B3R(D)

ECM	LOC	SUMMARY OF MODIFICATIONS	EXECUTED	CHECKED	RELEASED	DATE	VER
EXECUTED	USERADMIN	THREE PHASE W22 MOTOR - NEMA PREMIUM EFF					
CHECKED		FRAME 444/5T IP55 TEFC					
RELEASED		WEG code: 11355339					
REL DT	22.04.2019	WMO Jaragua do Sul	Product Engineering	SHEET	1 / 1		

100 HP 06 Poles 60Hz

A

