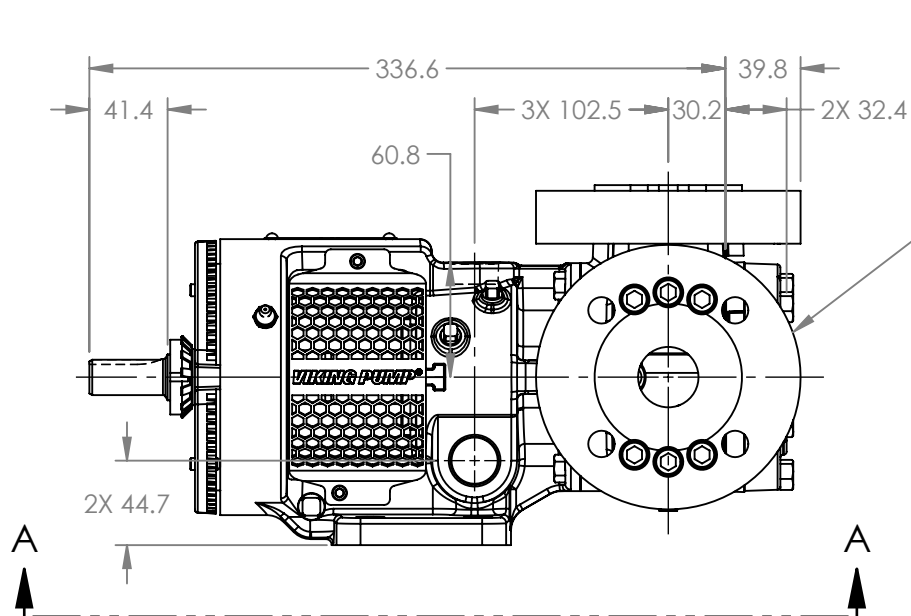
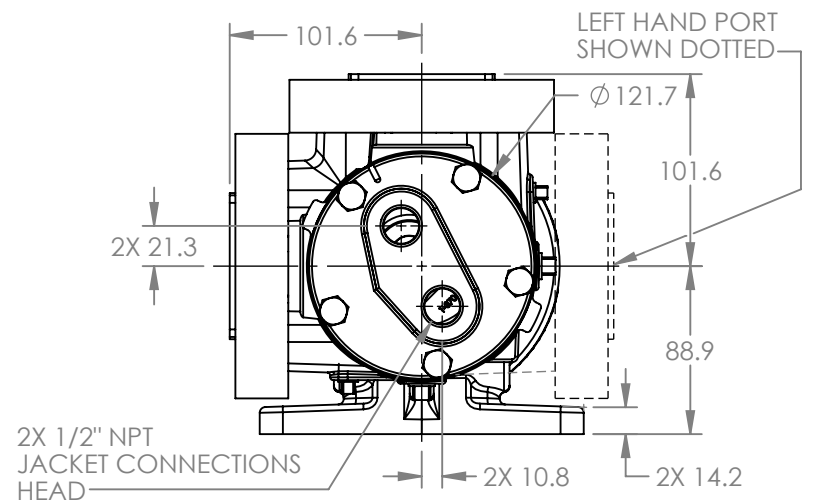


VIEW A-A



PORTS: 2X RAISED FACE FLANGES
SUITABLE FOR USE WITH
DIN 32 PN 16 FLANGES



MODELS WITH OPTIONAL FLANGED PORTS:
H223C, H4223C, H227C, H1227C, H4227C,
HL223C, HL4223C, HL227C, HL1227C, HL4227C

NOTES:
1. ALL DIMENSIONS ARE FOR REFERENCE ONLY.

STATE	Released	06/20/2024	DIMENSIONS ARE IN MILLIMETERS
DRAWN	DLende	06/03/2024	
CHECKED	JB	06/05/2024	

PROJECT E330
WAS:

VIKING PUMP

VIKING PUMP, INC.
A Unit of IDEX Corporation
Cedar Falls, IA 50613 U.S.A.
VIKINGPUMP.COM

THIS DRAWING IS THE PROPERTY OF
VIKING PUMP, INC. AND IS PROPRIETARY
IN GENERAL AND DETAIL. IT SHALL NOT BE
COPIED OR ITS CONTENTS REVEALED TO
OUTSIDE PARTIES WITHOUT THE WRITTEN
CONSENT OF VIKING PUMP, INC.

3D

DWG. NO.
HV-4240

SHEET 1 OF 1

REV. A.0

06/20/2024