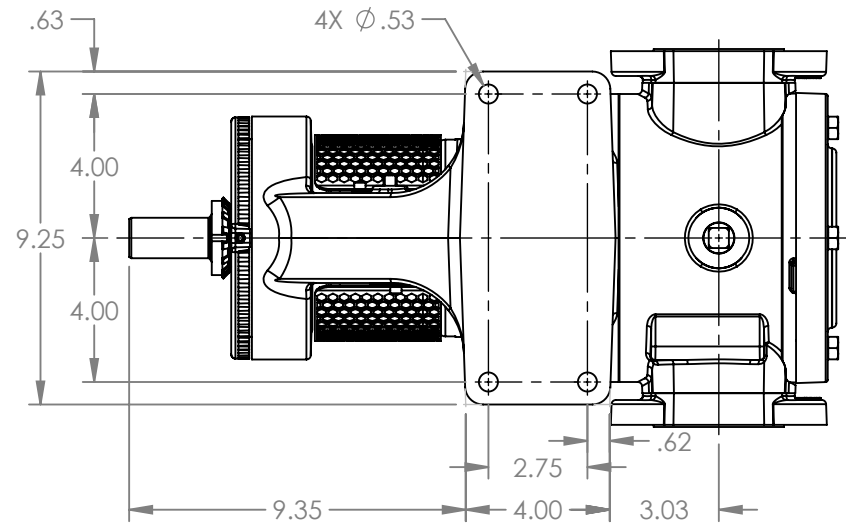
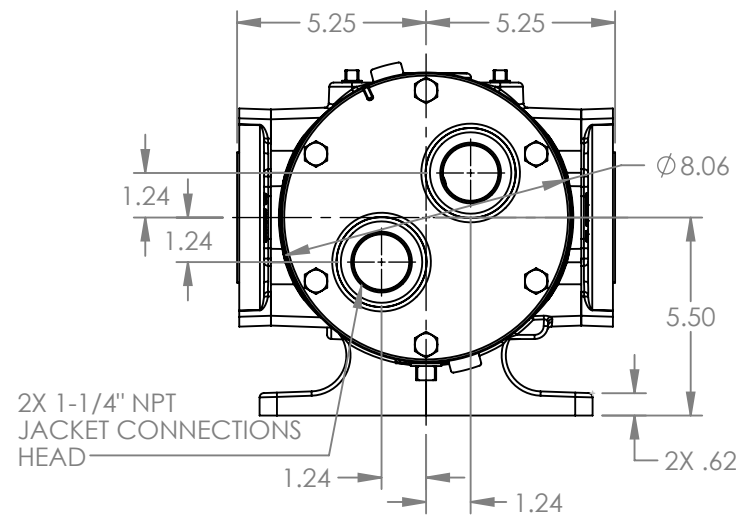
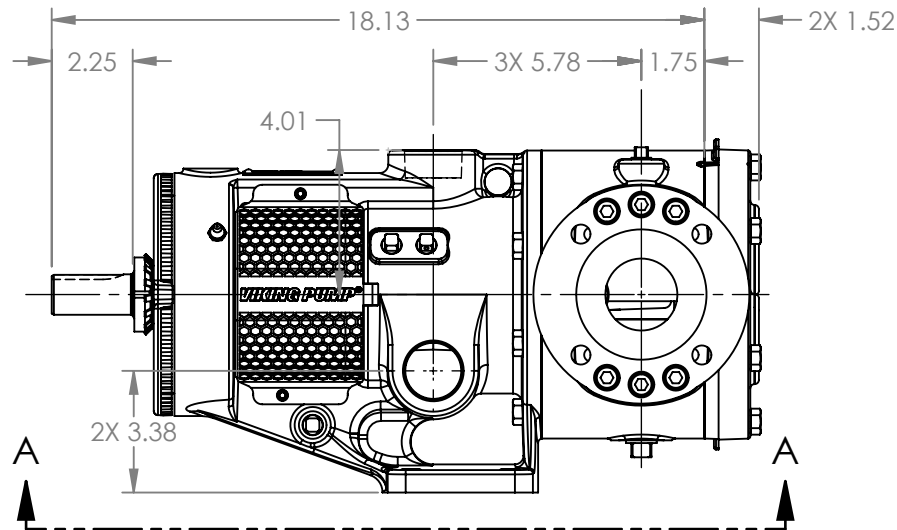


PORTS: 2X 2" RAISED FACE FLANGES DRILLED AND TAPPED SUITABLE FOR USE WITH CLASS 150 ANSI FLANGES (223C, 4223C, 227C, 1227C, 4227C)



VIEW A-A



MODELS WITH OPTIONAL PORTS:
K223C, K4223C, K227C, K1227C, K4227C, KK223C, KK4223C, KK227C, KK1227C, KK4227C

NOTES:
1. ALL DIMENSIONS ARE FOR REFERENCE ONLY.

STATE	Released	04/16/2024
DRAWN	dalcom	07/17/2023
CHECKED	DTL	04/16/2024

DIMENSIONS ARE IN INCHES	
PROJECT:	E330
WAS:	

VIKING PUMP

VIKING PUMP, INC.
A Unit of IDEX Corporation
Cedar Falls, IA 50613 U.S.A.
VIKINGPUMP.COM

THIS DRAWING IS THE PROPERTY OF VIKING PUMP, INC. AND IS PROPRIETARY IN GENERAL AND DETAIL. IT SHALL NOT BE COPIED OR ITS CONTENTS REVEALED TO OUTSIDE PARTIES WITHOUT THE WRITTEN CONSENT OF VIKING PUMP, INC.

3D

DWG. NO.
KV-2669

SHEET 1 OF 1

REV. A.1

04/16/2024