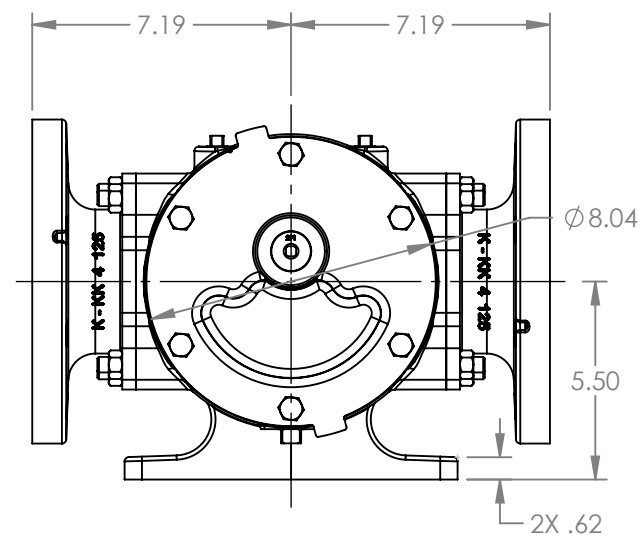
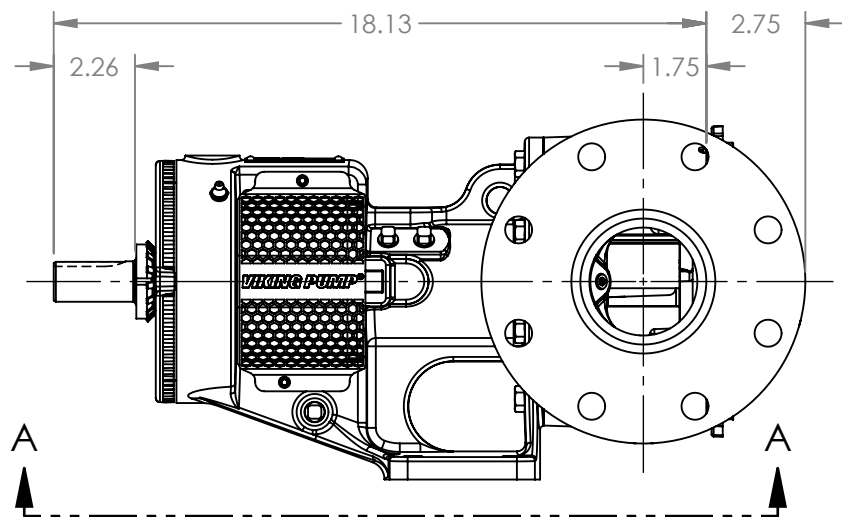
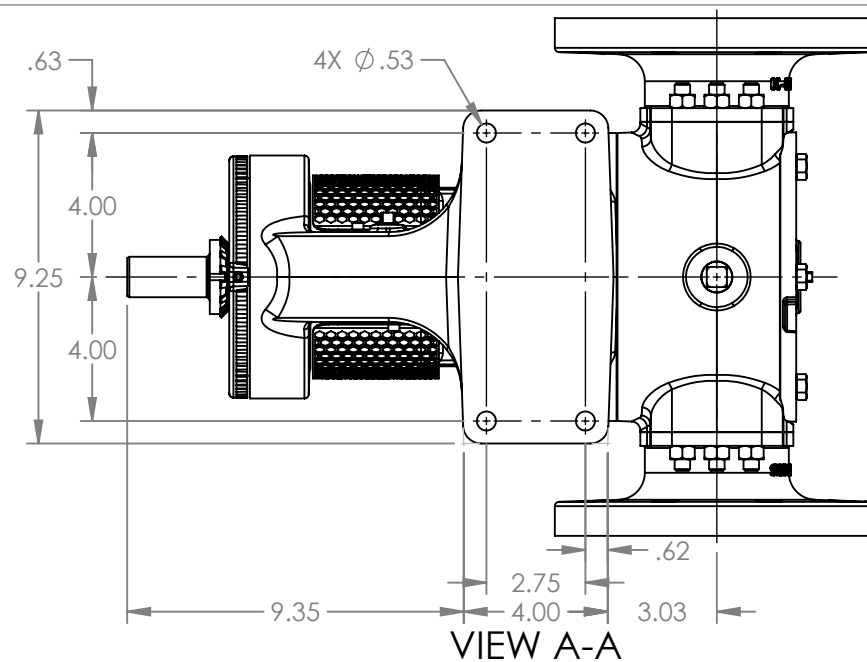


PORTS: 2X 4" FLANGES  
SUITABLE FOR USE WITH  
CLASS 125 ANSI FLANGES



MODELS WITH OPTIONAL FLANGED PORTS:  
K124C, K1124C, K4124C, K4624C,  
KK124C, KK1124C, KK4124C, KK4624C

NOTES:  
1. ALL DIMENSIONS ARE FOR REFERENCE ONLY.

STATE	Released	01/21/2026
DRAWN	aeverhardt	01/21/2026
CHECKED	DTL	01/21/2026

DIMENSIONS ARE IN INCHES
PROJECT: E399
WAS:



VIKING PUMP, INC.  
A Unit of IDEX Corporation  
Cedar Falls, IA 50613 U.S.A.  
VIKINGPUMP.COM

THIS DRAWING IS THE PROPERTY OF  
VIKING PUMP, INC. AND IS PROPRIETARY  
IN GENERAL AND DETAIL. IT SHALL NOT BE  
COPIED OR ITS CONTENTS REVEALED TO  
OUTSIDE PARTIES WITHOUT THE WRITTEN  
CONSENT OF VIKING PUMP, INC.

3D

DWG. NO.  
KV-2762

SHEET 1 OF 1

REV. A.0

01/21/2026