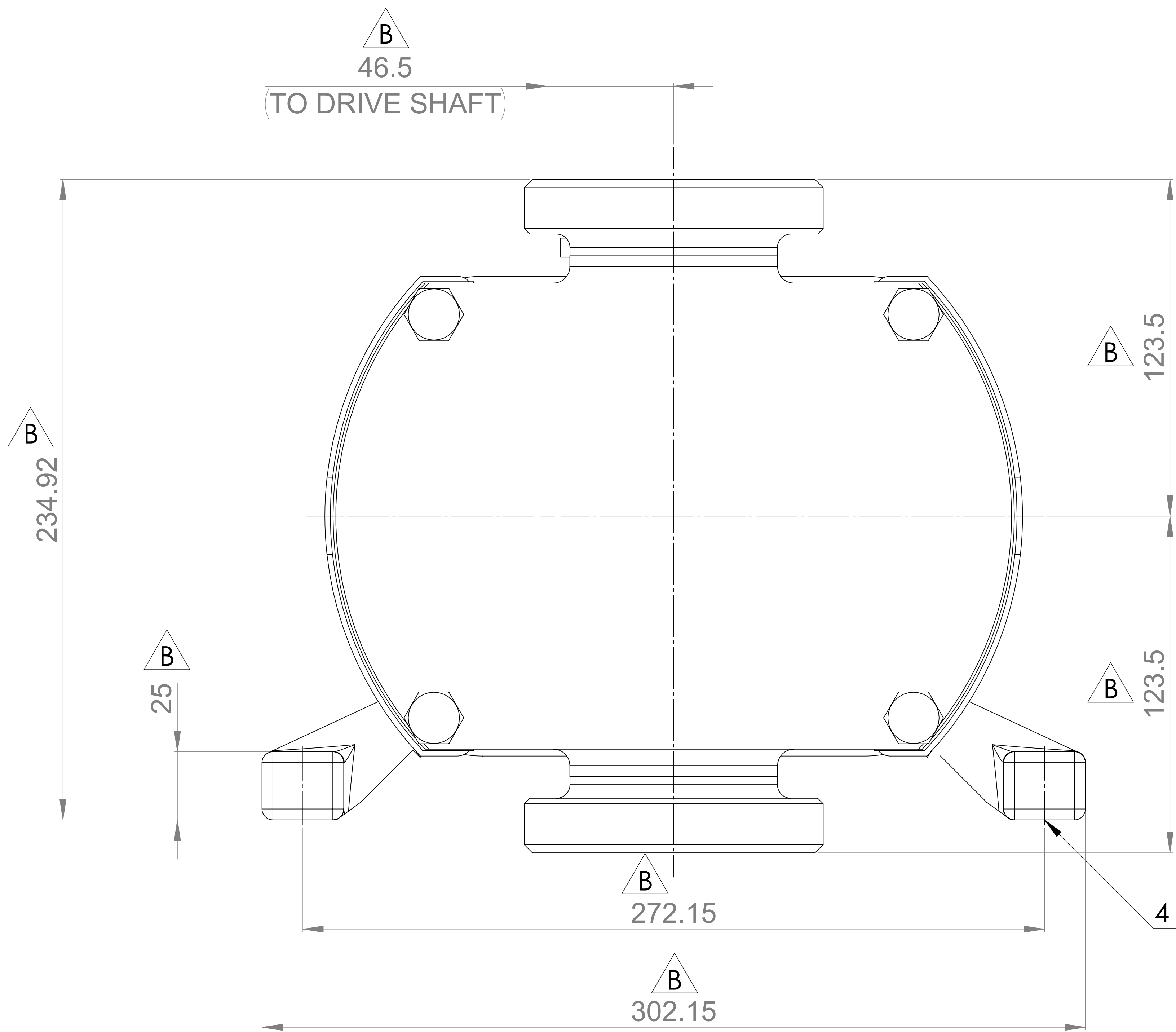
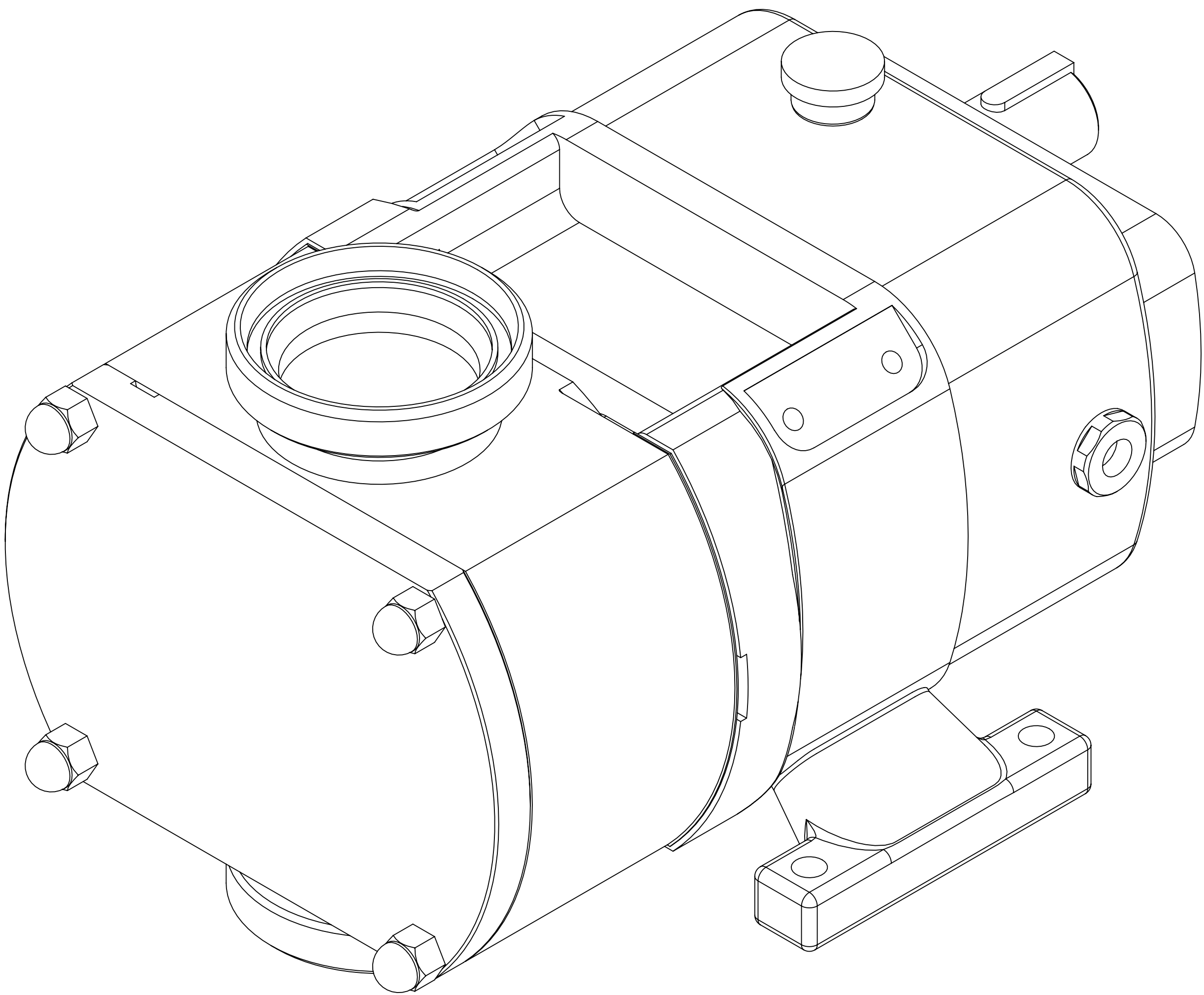


GENERAL ARRANGEMENT DETAILS

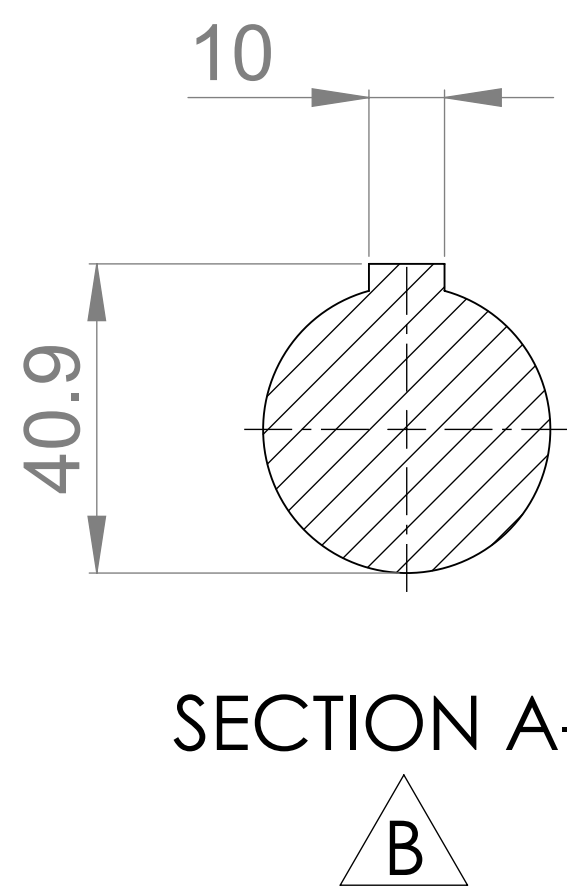
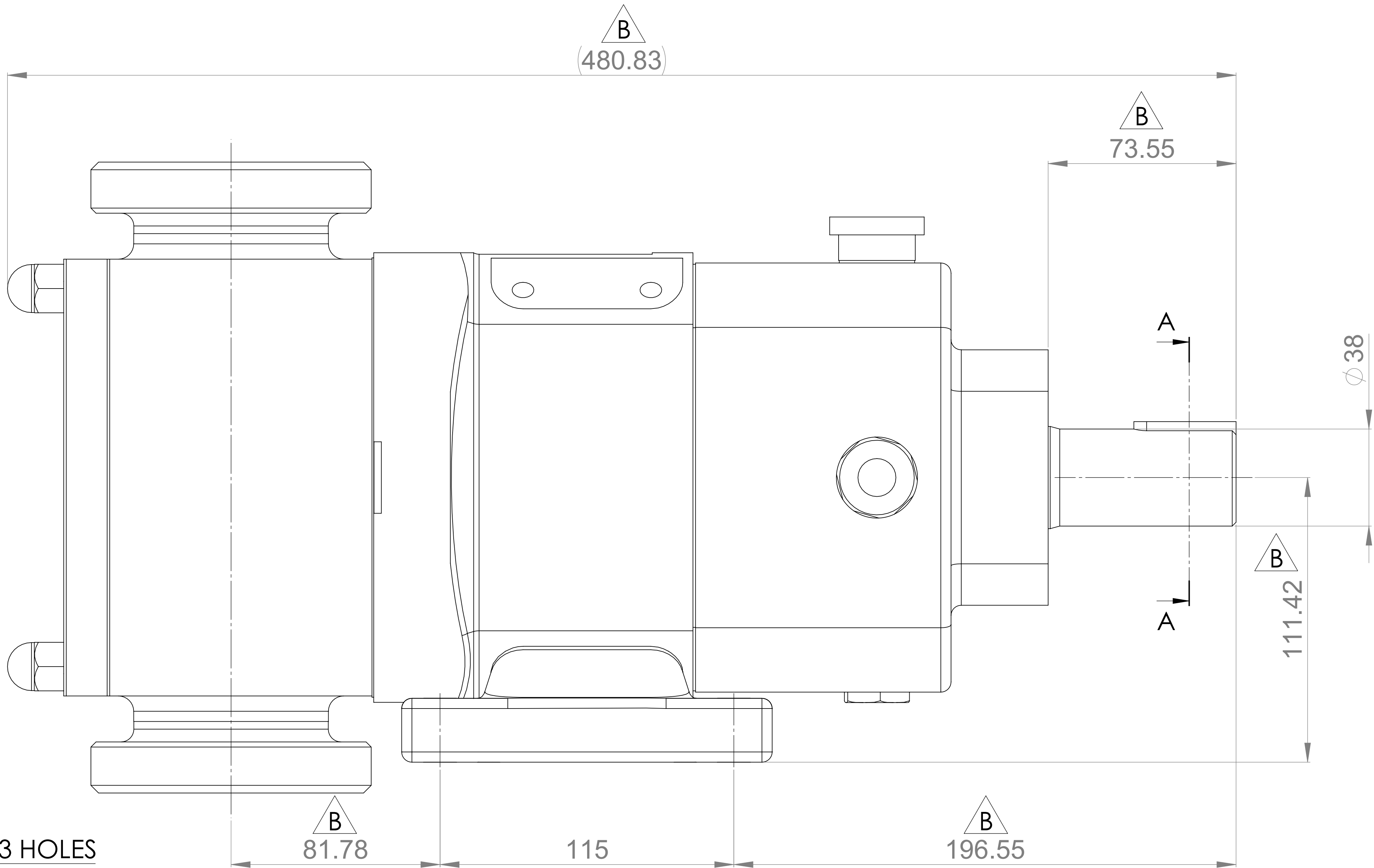
PUMP INFORMATION

PUMP MODEL	CLASSIC+ CP30/0113/07
LEFT/TOP CONNECTION	3" DIN 11851 MALE
RIGHT/BOTTOM CONNECTION	3" DIN 11851 MALE
DRIVE SHAFT POSITION	LEFT HAND DRIVE
FRONT COVER ADDITIONS	STANDARD
ROTORCASE ADDITIONS	STANDARD
GEARBOX ADDITIONS	STANDARD
PUMP ADDITIONS	STANDARD

THIS IS NOT A CERTIFIED DRAWING, USE FOR GENERAL  
INSTALLATION ONLY



4 OFF Ø 13 HOLES



UPDATED FORMAT AND PRECISION	B	09/10/2024
ISSUE	A	07/04/2017
AMENDMENT	ISSUE	DATE



HIGHFIELD INDUSTRIAL ESTATE,  
EAST SUSSEX, BN23 6PT  
TEL: (+44) 1323 509211

**COPYRIGHT:**  
THIS DRAWING IS THE SOLE  
PROPERTY OF  
**VIKING PUMP HYGIENIC LTD.**  
IT MUST NOT BE COPIED OR USED  
IN PART OR FULL WITHOUT PRIOR  
WRITTEN CONSENT.

UNLESS OTHERWISE STATED:  
ALL DIMENSIONS ± 2.50  
ANGLES ±2.0°  
DO NOT SCALE THIS DRAWING  
REMOVE BURRS AND SHARP EDGES  
DIMENSIONS IN MILLIMETRES  
**IF IN DOUBT ASK**

PROJECTION	DRAWN	CHECKED	TITLE: GENERAL ARRANGEMENT
	MR	KCB	DRG. NO: <b>GA3607</b>