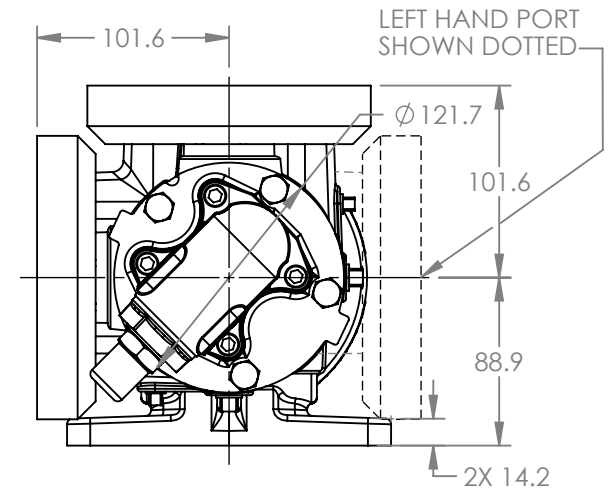
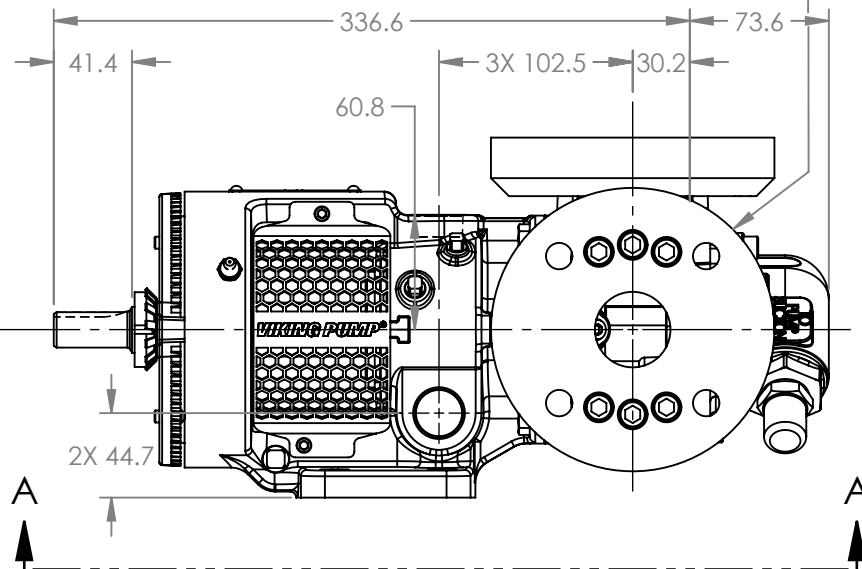


PORTS: 2X FLANGES  
SUITABLE FOR USE WITH  
DIN 40 PN 16 FLANGES



MODELS WITH OPTIONAL FLANGED PORTS:  
H223C, H4223C, H227C, H1227C, H4227C,  
HL223C, HL4223C, HL227C, HL1227C, HL4227C

NOTES:  
1. ALL DIMENSIONS ARE FOR REFERENCE ONLY.

STATE	Released	06/20/2024	DIMENSIONS ARE IN MILLIMETERS
DRAWN	DLende	06/03/2024	
CHECKED	JB	06/06/2024	

PROJECT E330  
WAS:

**VIKING PUMP**

VIKING PUMP, INC.  
A Unit of IDEX Corporation  
Cedar Falls, IA 50613 U.S.A.  
VIKINGPUMP.COM

THIS DRAWING IS THE PROPERTY OF  
VIKING PUMP, INC. AND IS PROPRIETARY  
IN GENERAL AND DETAIL. IT SHALL NOT BE  
COPIED OR ITS CONTENTS REVEALED TO  
OUTSIDE PARTIES WITHOUT THE WRITTEN  
CONSENT OF VIKING PUMP, INC.

3D

DWG. NO.  
HV-4245

SHEET 1 OF 1

REV. A.0

06/20/2024