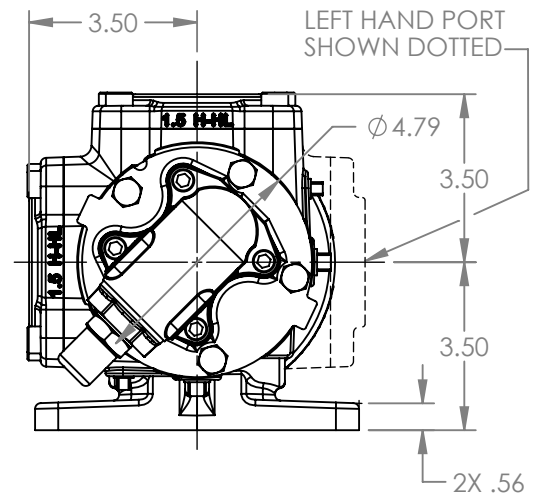
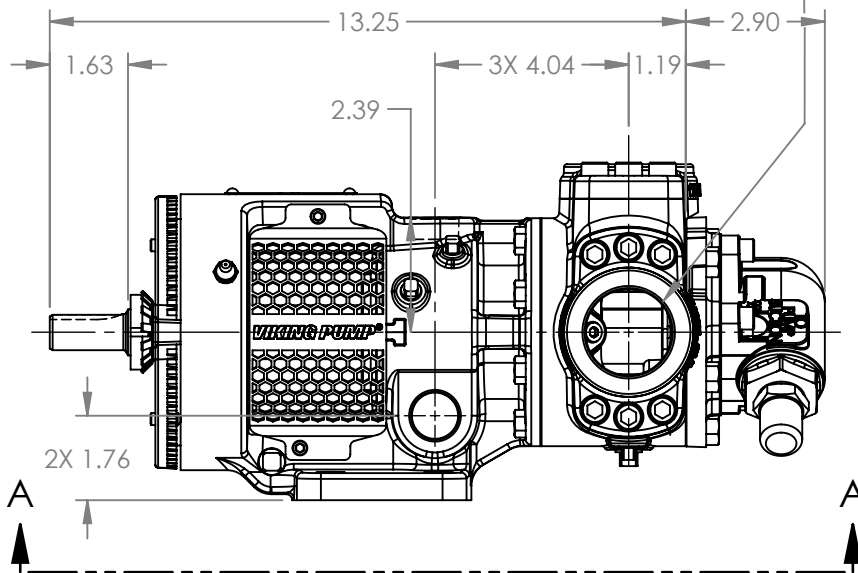


VIEW A-A

PORTS: 2X 1-1/2" NPT



STANDARD MODELS:
 H223C, H4223C, H227C, H1227C, H4227C,
 HL223C, HL4223C, HL227C, HL1227C, HL4227C

NOTES:
 1. ALL DIMENSIONS ARE FOR REFERENCE ONLY.

STATE	Released	01/08/2024
DRAWN	DLende	06/05/2023
CHECKED	DTL	01/08/2024

DIMENSIONS ARE IN INCHES	
PROJECT: E330	
WAS:	



VIKING PUMP, INC.
 A Unit of IDEX Corporation
 Cedar Falls, IA 50613 U.S.A.
 VIKINGPUMP.COM

THIS DRAWING IS THE PROPERTY OF VIKING PUMP, INC. AND IS PROPRIETARY IN GENERAL AND DETAIL. IT SHALL NOT BE COPIED OR ITS CONTENTS REVEALED TO OUTSIDE PARTIES WITHOUT THE WRITTEN CONSENT OF VIKING PUMP, INC.

3D

DWG. NO.
 HV-4183

SHEET 1 OF 1

REV. A.1

01/08/2024