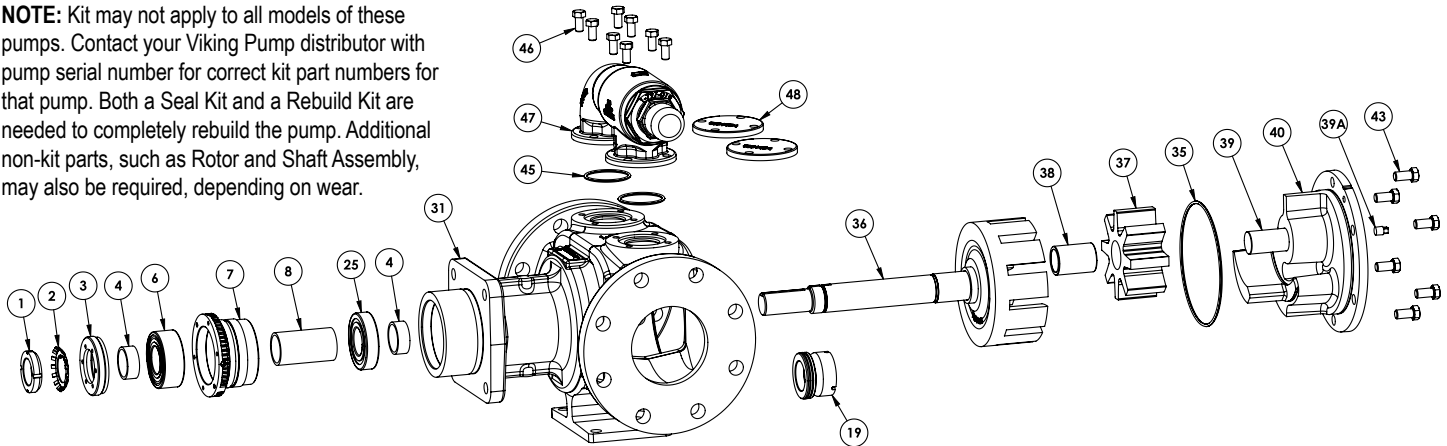


Exploded Diagram for Series 4195 (iron), Sizes KE, KKE, LQE, LSE, Q, QS

NOTE: Kit may not apply to all models of these pumps. Contact your Viking Pump distributor with pump serial number for correct kit part numbers for that pump. Both a Seal Kit and a Rebuild Kit are needed to completely rebuild the pump. Additional non-kit parts, such as Rotor and Shaft Assembly, may also be required, depending on wear.



ITEM	PART (may not exactly match parts list descriptions)	PART INCLUDED IN:	
		SEAL KIT	REBUILD KIT
1	Locknut	✓	
2	Lockwasher	✓	
3	Bearing End Cap		
4	Bearing Spacer Collar (2 Req'd on KE - LSE Sizes) ②	✓	
6	Ball Bearing	✓	
7	Bearing Housing		
Not Illus	Setscrews for Bearing Housing (2 Req'd)	✓	
Not Illus	Setscrews for End Cap (2 Req'd)	✓	
Not Illus	Nylon Slug (2 Req'd)	✓	
8	Bearing Spacer	✓	
19	Mechanical Seal	✓	
25	Ball Bearing	✓	
31	Casing		
35	Head O-Ring	✓	
36	Rotor and Shaft Assembly		
37	Idler and Bushing Assembly		✓
38	Idler Bushing (part of 37)		
39	Idler Pin (part of 40)		
39A	Idler Pin Plug (Part of 40)		
40	Head and Idler Pin Assembly		✓
43	Capscrews (KE - LSE) or Studs (Q - QS) for Head ①		✓
Not Illus	Nut for Studs (Q - QS Only)		✓
45	O-Ring for Relief Valve or Cover Plate (2-Req'd)	✓	
46	Capscrews for Relief Valve or Cover Plate ①		✓
47	Relief Valve		
48	Cover Plates - (2 Req'd)		

① Quantity of capscrews depends on pump size.

② Q & QS sizes require only one Bearing Spacer in the Bearing Housing.

Use seal lubricant in seal kit for installing mechanical seal and O-rings.

Viton® is a Registered Trademark of DuPont Performance Elastomers.

Important safety information and rebuild instructions are found in the Technical Service Manual.

Download current Technical Service Manuals from www.vikingpump.com:

TSM 000 - Installation, Startup, Troubleshooting,
Preventative Maintenance, Do's & Don'ts

TSM 144.1 - Series 4195 (iron), Sizes KE, KKE, LQE, LSE, Q, QS